



二、Start the installation steps

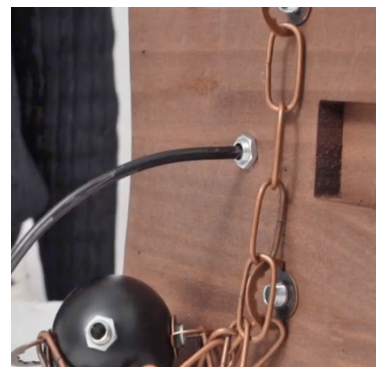
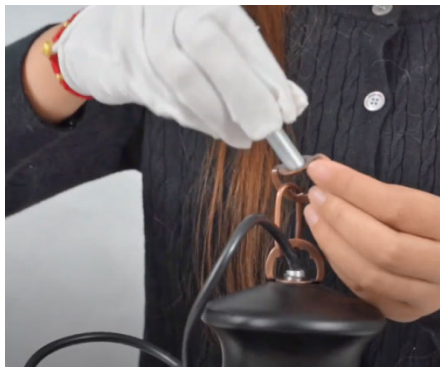
1. Unscrew all black nuts on the chain



2. Insert it into the small hole on the wooden board and screw on the black nut to secure it.



3. Pass the wires of the lampshade through the silver screws (the silver screws are in the transparent bag), and then through the small hole in the wooden board. (The steps for all three lampshades are the same.) Lock the other end.



4. Unscrew the screws, install the glass lampshade, and then tighten the screws.



5. Connect all black wires to black wires, all white wires to white wires, and cover the nuts.



6. Pass the wire through the black ceiling cup, tighten the screws, and pass the wire through the ceiling cup.

