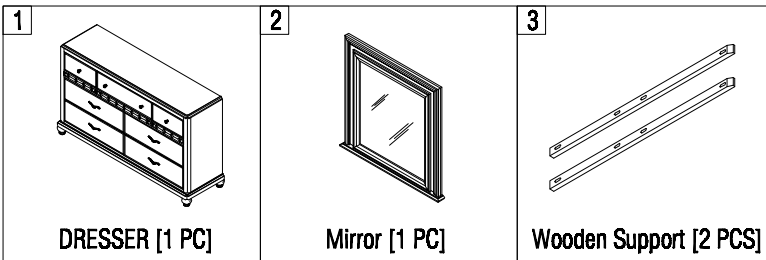


ASSEMBLY INSTRUCTION

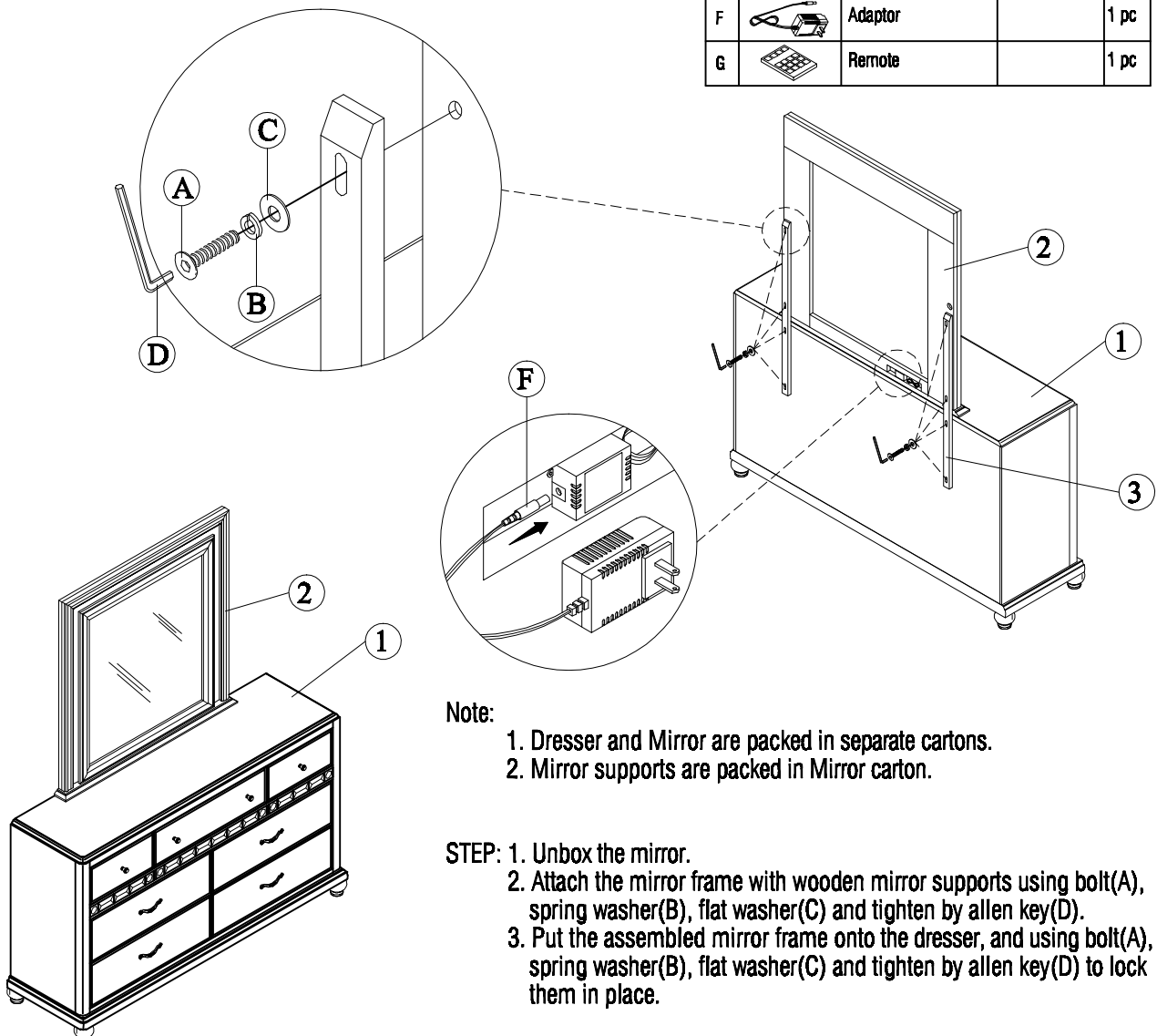
DRESSER MIRROR

Thank you for purchasing this quality product. Be sure to check all packing materials carefully for small parts, which may have come loose inside the carton during shipment. Identify and count all parts and compare with the parts list below.

PARTS LIST



| HARDWARE LIST | | | | |
|---------------|--------|--------------------|--------------|-------|
| No. | Sketch | Description | Size | Qty |
| A | | JCBC Screw | M6 x 35MM | 8 pcs |
| B | | Spring washer | Ø1/4" | 8 pcs |
| C | | Flat washer | Ø1/4" x 19MM | 8 pcs |
| D | | Allen key | M4 x 65MM | 1 pc |
| E | | Straight allen key | M4 x 100MM | 1 pc |
| F | | Adaptor | | 1 pc |
| G | | Remote | | 1 pc |



Note:

1. Dresser and Mirror are packed in separate cartons.
2. Mirror supports are packed in Mirror carton.

STEP: 1. Unbox the mirror.

2. Attach the mirror frame with wooden mirror supports using bolt(A), spring washer(B), flat washer(C) and tighten by allen key(D).
3. Put the assembled mirror frame onto the dresser, and using bolt(A), spring washer(B), flat washer(C) and tighten by allen key(D) to lock them in place.

CLEANING INSTRUCTION

Clean the surface with a furniture polish and a soft cloth.