

## INSTALLATION GUIDE FOR ANGLE/CORNER MOULDING

Outwater's Trim Fast: Angle/Corner mouldings are designed to make installation as easy as possible for DIYers, interior designers and contractors. These adhesive backed angle mouldings are manufactured from scratch-resistant styrene plastic and do not require nails or glue to install.

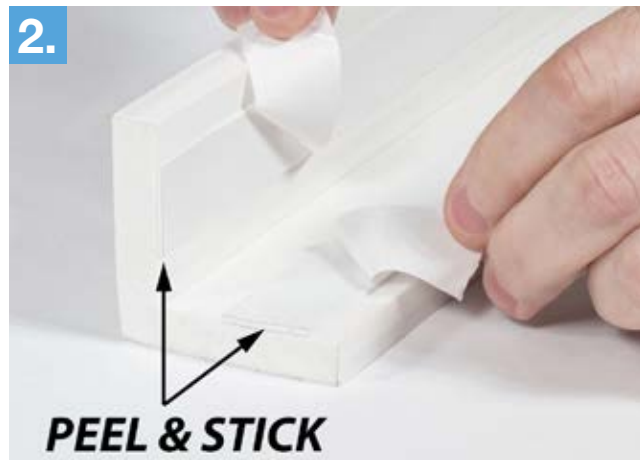
### PRIOR TO INSTALLATION

- Allow the angle/corner moulding to acclimate to room temperature.

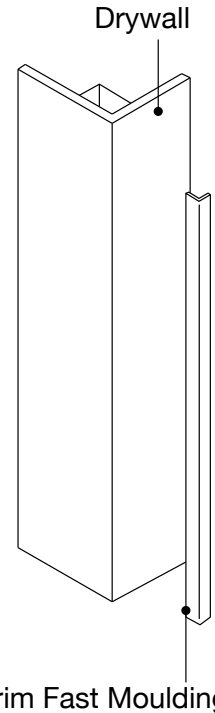
### INSTALLATION



1. Ensure the corner wall surface is clean and free of dirt. Wipe down the surface gently.



2. Remove the adhesive film cover and press the moulding down evenly. Hold for a few seconds.



Can be painted with an acrylic base paint.



3. Adhere to the wall. Adhesive cures over time. Allow approximately 72 hours for full adhesion.