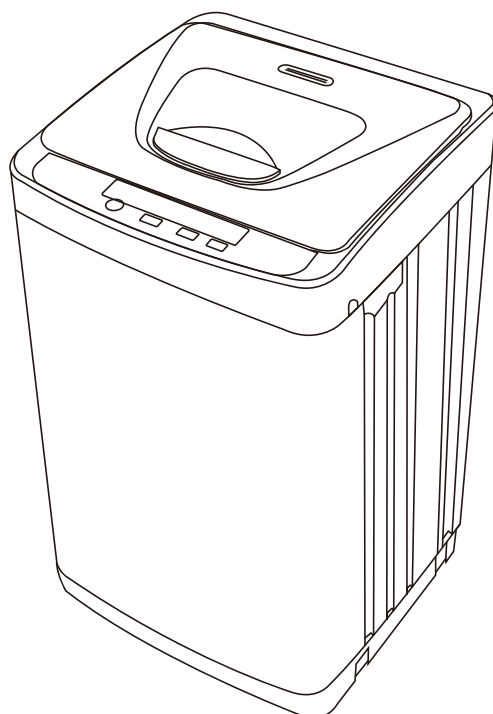


Nictemaw

AUTOMATIC WASHING MACHINE

Model Number: AMB005572



INSTRUCTION MANUAL

BEFORE USE, PLEASE READ AND FOLLOW ALL SAFETY RULES AND OPERATING INSTRUCTIONS.

Nictemaw has a policy of continuous improvement on its products and reserves the right to change materials and specifications without notice.

TABLE OF CONTENTS

Appliance Safety	3
Important Safeguides	4
Help Us Help You / If You Need Service	5
Parts, Nictemaw, and Accessories	6
Important Safety Instructions	7
Installation Instructions	8
Before Using Your Portable Washer	8
Selecting a Location / Moving Your Washer	8
Connecting the Water Supply Hose / Sink Faucet Connection	9 – 10
Disconnecting the Water Supply Hose / Positioning the Drain Hose	10
Electrical Connection / Extension Cords	11
Control Panel / Functions Description	12
Operating Your Portable Washer	13
Preparation / Before Washing	14
Operating Instructions	15 – 16
Adding / Removing Clothes During a Cycle	16
Care and Maintenance	17
Problems with Your Portable Washer	18
Troubleshooting Guide / Service for Your Portable Washer	18 – 19
Your Nictemaw Products Warranty / What is not Covered	20

APPLIANCE SAFETY

Your safety and the safety of others are very important.

We have provided many important safety messages in this manual and on your appliance. Always read and obey all safety messages.



This is the Safety Alert Symbol. This symbol alerts you to potential hazards that can kill or injure you and others. All safety messages will follow the Safety Alert Symbol and either the words "DANGER", "WARNING" or "CAUTION".



Danger means that failure to heed this safety statement may result in severe personal injury or death.



Warning means that failure to heed this safety statement may result in extensive product damage, serious personal injury, or death.



Caution means that failure to heed this safety statement may result in minor or moderate personal injury, or property or equipment damage.

All safety messages will alert you do what the potential hazard is, tell you how to reduce the chance of injury, and let you know what can happen if the instructions are not followed.



PROP. 65 WARNING FOR CALIFORNIA RESIDENTS

WARNING:

Cancer And Reproductive Harm

www.p65warnings.ca.gov

NOTICE: Each machine is tested for water intake and drainage during production. Therefore, there may be water residues or traces of water inside the washing tub, which is a normal phenomenon.

IMPORTANT SAFEGUIDES



Before the appliance is used, it must be properly positioned and installed as described in this manual, so read the manual carefully. To reduce the risk of fire, electrical shock or injury when using the appliance, follow basic precaution, including the following:

DANGER

- Plug into a grounded 3-prong outlet, do not remove grounding prong, do not use an adapter, and do not use an extension cord.
- Replace all panels before operating.
- It is recommended that a separate circuit, serving only your appliance be provided. Use receptacles that cannot be turned off by a switch or pull chain .
- Never clean appliance parts with flammable fluids . These fumes can create a fire hazard or explosion . And do not store or use gasoline or other flammable vapors and liquids in the vicinity of this or any other appliance. The fumes can create a fire hazard or explosion .
- Before proceeding with cleaning and maintenance operations, make sure the power line of the unit is disconnected.
- Do not connect or disconnect the electric plug when your hands are wet.
- Unplug the appliance or disconnect power before cleaning or servicing. Failure to do so can result in electrical shock or death.
- Do not attempt to repair or replace any part of your appliance unless it is specifically recommended in this material. All other servicing should be referred to a qualified technician .

WARNING

FOLLOW WARNING CALL OUTS BELOW ONLY WHEN APPLICABLE TO YOUR MODEL

- Use two or more people to move and install appliance. Failure to do so can result in back or other injury.
- To ensure proper ventilation for your appliance, the front of the unit must be completely unobstructed. Choose a well-ventilated area with temperatures above 60°F (16°C) and below 90°F (32°C). This unit must be installed in an area protected from the element, such as wind, rain, water spray or drips.
- The appliance should not be located next to ovens, grills or other sources of high heat.
- The appliance must be installed with all electrical, water and drain connections in accordance with state and local codes. A standard electrical supply (115 V AC only, 60 Hz), properly grounded in accordance with the National Electrical Code and local codes and ordinances is required.
- Do not kink or pinch the power supply cord of appliance.
- The fuse (or circuit breaker) size should be 15 amperes.
- It is important for the appliance to be leveled in order to work properly. You may need to make several adjustments to level it.
- Never allow children to operate, play with or crawl inside the appliance.
- Do not use solvent-based cleaning agents or abrasives on the interior. These cleaners may damage or discolor the interior.
- Do not use this apparatus for other than its intended purpose.

IF YOU NEED SERVICE

Read this guide carefully.

We're proud of our service and want you to be pleased. If for some reason you are not happy with the service you receive, here are some steps to follow for further assistance.

FIRST, contact the people who serviced your portable washer. Explain why you are not pleased. In most cases, this will solve the problem .

It is intended to help you operate and maintain your new portable washer properly.

Keep it handy to answer your questions. If you don't understand something or you need more assistance, please send email to below add:

Nictemaw Customer Service

support@nictemawshop.com

Keep proof of original purchase date (such as your sales slip) with this guide to establish the warranty period.

Write down the model and serial numbers.

You'll find them on a plate located on the rear outside wall of the portable washer.

Please write these numbers here:

Date of Purchase

Model Number

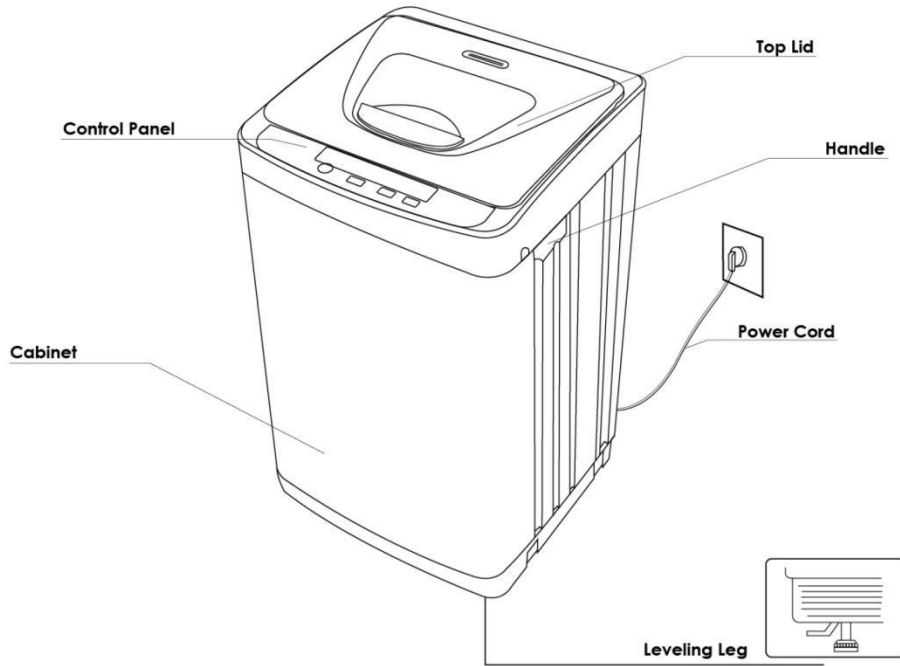
Serial Number


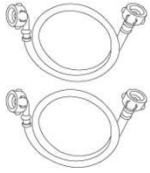


Use these numbers in any correspondence or service calls concerning your portable washer.

If you received a damaged portable washer, immediately contact the dealer (or builder) that sold you the portable washer.


Save time and money. Before you call for service, check the Troubleshooting Guide. It lists causes of minor operating problems that you can correct yourself.



PARTS AND FEATURES:



Accessories			
			
User Manual	Water Inlet Hose Assembly	Quick Connection Adapter x 2	Water Inlet Cap

IMPORTANT SAFETY INSTRUCTIONS

	<p>To reduce the risk of fire, electrical shock, or injury when using your portable washer, follow these basic precautions:</p>
<ul style="list-style-type: none"> • Read all instructions before using the portable washer. • Do not wash articles that have been previously cleaned in, washed in, soaked in, or spotted with gasoline, dry-cleaning solvents, or other flammable or explosive substances, as they give off vapors that could ignite or explode. • Do not add gasoline, dry-cleaning solvents, or other flammable or explosive substances to the wash water. These substances give off vapors that could ignite or explode. • Under certain conditions, hydrogen gas may be produced in a hot-water system that has not been used for 2 weeks or more. HYDROGEN GAS IS EXPLOSIVE. If the hot-water system has not been used for such a period, before using a washing machine, turn on all hot-water faucets and let water flow from each for several minutes. This will release any accumulated hydrogen gas. As the gas is flammable, do not smoke or use an open flame during this time. • DANGER or WARNING: Risk of child entrapment. Child entrapment and suffocation are not problems of the past. Junked or abandoned appliances are still dangerous . . . even if they will “just sit in the garage a few days .” • Before you throw away your old portable washer: Take off the lid. • Never allow children to operate, play with , or crawl inside the portable washer. Close supervision of children is necessary when the washer is used near children. • Do not reach into the washer if the agitator or inner tub is moving. • Do not tamper with controls. • Do not repair or replace any part of the washer or attempt any servicing unless specifically recommended in the user-maintenance instructions or in published user-repair instructions . • Never clean portable washer parts with flammable fluids . The fumes can create a fire hazard or explosion . • Do not place the washer in steamy rooms or where the washer is directly exposed to rain. Moisture may destroy the electrical insulation causing an electrical shock hazard. • Do not store, use gasoline, or any other flammable vapors and liquids in the vicinity of this or any other portable washer. The fumes can create a fire hazard or explosion . • If the power cord is damaged, it must be replaced by the manufacturer or its service agent or a similar qualified person in order to avoid a hazard. <p style="text-align: center;">-Save these instructions-</p>	


WARNING


This appliance is not intended for use by persons (including children) with reduced physical, sensory, or mental capabilities.

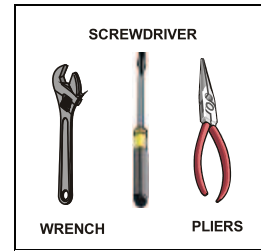
This appliance should not be operated by those with a lack of experience or knowledge of its use or operation, unless they have been given instructions concerning and/or are supervised during the use of the appliance by a person responsible for their safety.

This appliance is not intended for use by children. To avoid any possible type of injury or damage to the unit and or personal property all children should be supervised to ensure they do not play with the appliance.

INSTALLATION INSTRUCTIONS

BEFORE USING YOUR PORTABLE WASHER

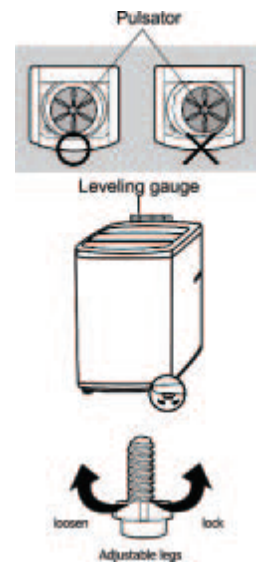
- Remove the exterior and interior packing.
- You will need the following tools:
 - Wrench
 - Pliers
 - Screwdriver
- Check to be sure you have all of the following parts:
 - 2 Inlet Hose
 - 2 Faucet Adapters
 - 1 Water Inlet Cover
 - 1 Drain Hose Assembly (Pre-Installed)
- Remove shipping brace. Note - It should be saved and used (to prevent damage to washer components) whenever washer is moved or transported to a new location.
- Clean the interior surface with lukewarm water using a soft cloth.
- Allow 2 inches of space between the back and sides of the appliance.
- Put your laundry into the washer evenly. Uneven laundry may cause noise or vibration.
- DO NOT use excessively hot water (122°F / 50°C or more). Plastic parts may be deformed or damaged. Also, clothing may be deformed or bleached.
- Before washing, check all pockets. If nails or pins remain in pockets, they may damage the washer or clothes.
- Never splash water on the control panel.
- Plug the washer into an exclusive properly installed-grounded wall outlet. Do not under any circumstances cut or remove the third (ground) prong from the power cord. Any questions concerning power and/or grounding should be directed toward a certified electrician or an Authorized Nictemaw Products service center.



SELECTING A LOCATION

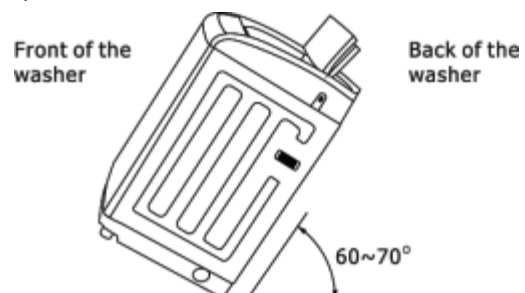
Before you install the portable washer, select a location with the following characteristics:

- A hard level surface (if the surface is uneven, see Adjusting The Adjustable Foot section on the next page) .
- Away from direct sunlight. Direct sunlight may affect the acrylic coating, plastic and electrical components .
- Adequate ventilation.
- Away from sources of heat such as coal or gas . Make sure that the washing machine does not stand on its power cord.
- Ventilation openings must not be obstructed by carpeting when the portable washer is installed on a carpeted floor.
- It is recommended that you place your portable washer on a hard material floor such as tile, concrete, linoleum and to avoid if at all possible, placement on wooden floors or carpeted areas.



MOVING YOUR WASHER

To move your washer, tilt the unit back onto its rear rollers and push it forward as shown in the figure.

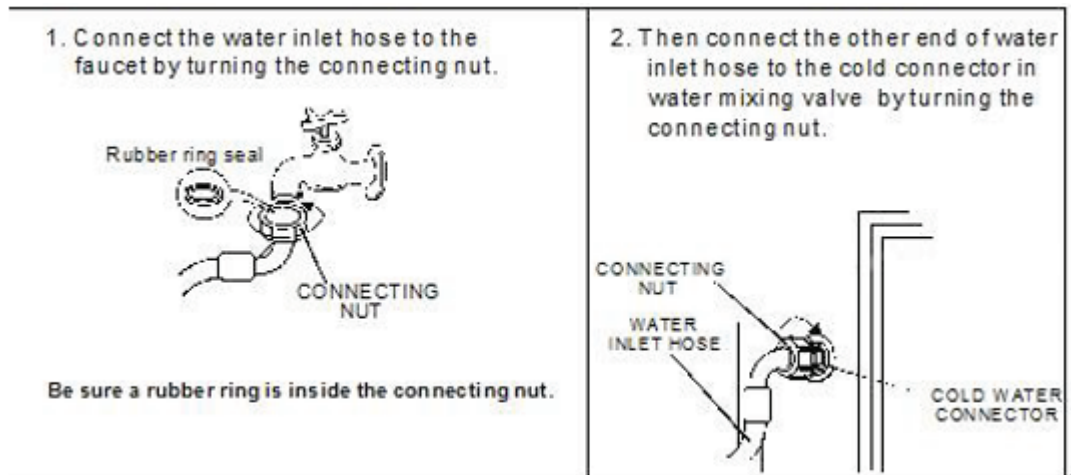


CONNECTING THE WATER SUPPLY HOSE

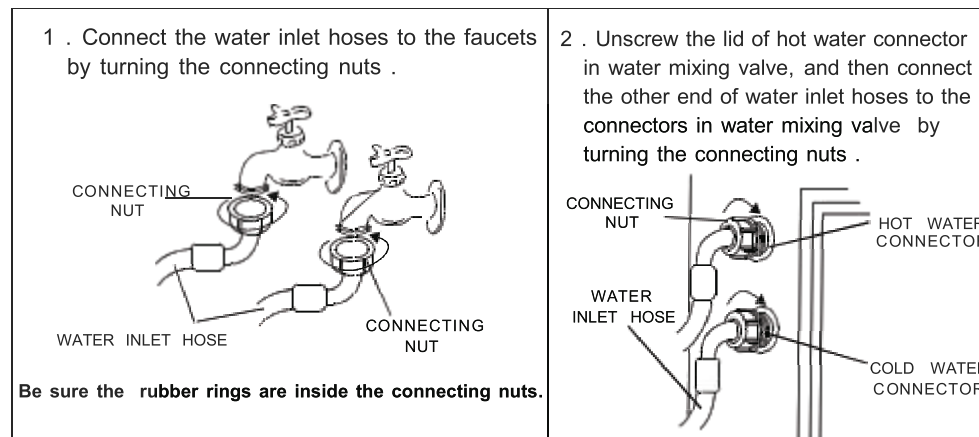
The water supply hose must be connected to the washing machine at one end and to the water faucet at the other. Do not stretch the water supply hose. If the hose is too short and you do not wish to move the water faucet, replace the hose with a longer, high-pressure hose.

Select appropriate faucet as shown in the figures below. If none of these faucets are available, use the faucet adapter provided.

The end of faucet spout should be longer than 10mm (0.4”), or the connector cannot be fixed properly. Water leakage could develop.



If you have both cold and hot water supplied, connect the inlet hoses by matching cold to cold and hot to hot.

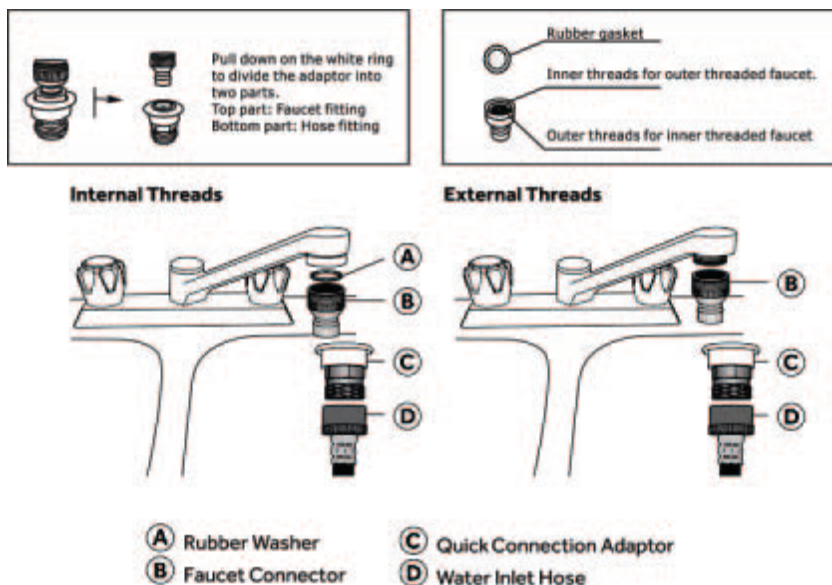


SINK FAUCET CONNECTION

For normal kitchen-sink tap only use the inlet hose with cold water inlet.

Connect the inlet hose to the male hose thread adaptor by turning it clockwise to be fixed tightly. Make sure to insert the rubber ring enclosed. Then connect tightly to your sink.

Note: Some faucets may require you to also use the female hose thread adaptor between the male adaptor and your sink faucet as shown below. Make sure the rubber ring is inserted and connect to your sink .

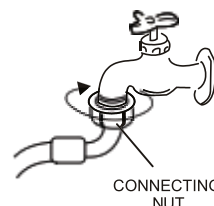


If water leaks from faucet connection or washer connection, turn off water and tighten fully using a wrench. Be careful not to over tighten and damage water connection. Turn on water supply and make sure no leaks are present.

DISCONNECTING THE WATER SUPPLY HOSE

Dismantling the hose directly may cause water to splash due to the possible high-water pressure in the hose, even after the faucet has been turned off. Please take off the hose as per following steps, even if the faucet is closed:

- Turn off the faucet.
- Turn on the power and let the machine run for about 5 seconds then turn it off.
- Remove the connecting nuts from the faucet and washing machine.



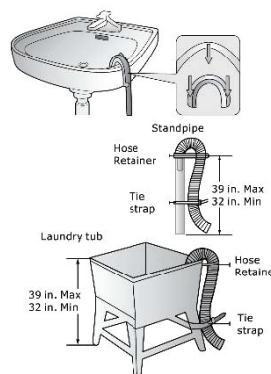
Note: If the washing machine is frequently used, it is not necessary to dismantle the inlet hose to avoid possible damage to the threads.

POSITIONING THE DRAIN HOSE

The washing machine is equipped with a drain pump, the up drainage is available and the drain hose can be hung in the basin or bathtub.

NOTE: The height of the drain pipe should be less than 3.93 feet, otherwise it may cause: the drain pipe is not smooth, the drain pipe is too long, and the work stops midway.

For best drainage effect, the recommended height is 2.5 – 3.25 feet.



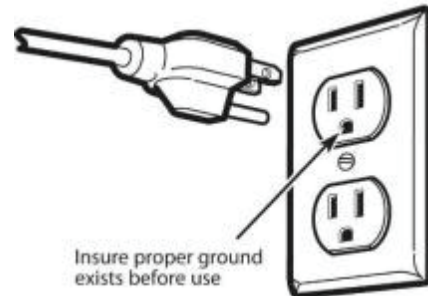
➤ **ELECTRICAL CONNECTION**

⚡ Warning ⚡

Improper use of the grounded plug can result in the risk of electrical shock. If the power cord is damaged, have it replaced by an authorized Nictemaw Products service center.

This appliance should be properly grounded for your safety. The power cord of this appliance is equipped with a three-prong plug which mates with standard three prong wall outlets to minimize the possibility of electrical shock.

Do not under any circumstances cut or remove the third ground prong from the power cord supplied. For personal safety, this appliance must be properly grounded.



This appliance requires a standard 115/ 120 Volt AC ~/60Hz electrical ground outlet with three-prong. Have the wall outlet and circuit checked by a qualified electrician to make sure the outlet is properly grounded. When a standard 2-prong wall outlet is encountered, it is your responsibility and obligation to have it replaced with a properly grounded 3- prong wall outlet.

The cord should be secured behind the appliance and not left exposed or dangling to prevent accidental injury.

The appliance should always be plugged into its own individual electrical outlet which has a voltage rating that matches the rating label on the appliance. This provides the best performance and also prevent overloading house wiring circuits that could cause a fire hazard from overheated. Never unplug the appliance by pulling the power cord. Always grip the plug firmly and pull straight out from the receptacle. Repair or replace immediately all power cords that have become frayed or otherwise damaged. Do not use a cord that shows cracks or abrasion damage along its length or at either end. When moving the appliance, be careful not to damage the power cord.

➤ **EXTENSION CORD**

Because of potential safety hazards under certain conditions, it is strongly recommended that you do not use an extension cord with this appliance. However, if you must use an extension cord it is absolutely necessary that it be a UL/CUL-Listed, 3-wire grounding type appliance extension cord having a grounding type plug and outlet and that the electrical rating of the cord be 1 15 volts and at least 10 amperes.

➤ **SURGE PROTECTOR**

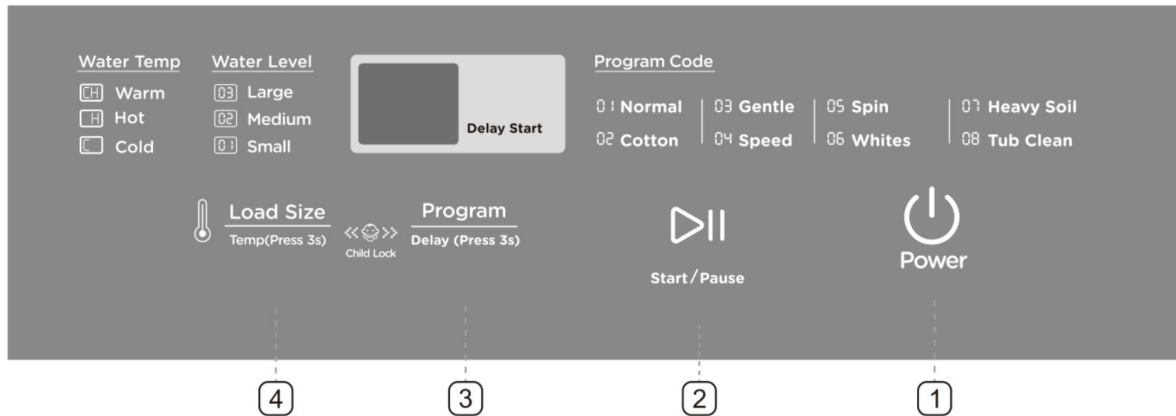
Most electrical appliances use a series of electric control boards to operate. These boards are very susceptible to power surges and could be damaged or destroyed.

If the appliance is going to be used in an area or if your city / country is prone to power surges / outages; it is suggested that you use a power surge protector for all electrical devices / appliances you use.

The surge protector that you select must have a surge block high enough to protect the appliance it is connected to. If you have any questions regarding the type and size of surge protector needed contact a licensed electrician in your area.

Damages due to power surges are not considered a manufacturer covered defect and will void your product warranty.

CONTROL PANEL



1	POWER ON / OFF BUTTON
2	START / PAUSE BUTTON
3	LOAD SIZE SELECTOR BUTTON WATER TEMPERATURE SELECTION (PRESS AND HOLD FOR APPROXIMATELY 3 SECONDS)
4	PROGRAM SELECTOR BUTTON DELAY START SELECTOR (PRESS AND HOLD FOR APPROXIMATELY 3 SECONDS) DELAY START CAN BE PROGRAMMED FROM 2 – 24 HOURS
	CHILD LOCK FUNCTION <i>TO ACTIVATE: DURING THE WASH CYCLE PRESS AND HOLD THE LOAD SIZE AND PROGRAM BUTTONS FOR APPROXIMATELY 2 SECONDS.</i> <i>TO DEACTIVATE PRESS AND HOLD THE LOAD SIZE AND PROGRAM BUTTONS FOR APPROXIMATELY 2 SECONDS OR SIMPLY PRESS THE POWER BUTTON.</i> WHEN ACTIVATED “CL” WILL FLASH ON AND OFF IN THE DISPLAY WINDOW

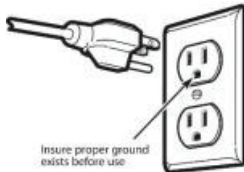
OPERATING YOUR PORTABLE WASHER

PREPARATION

1. Connect the water inlet hose to the water faucet.

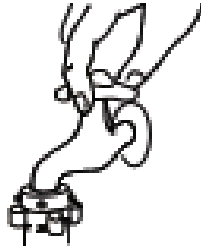
2. Ensure the drain hose has been installed properly.

3. Insert the plug into the socket. For safety the plug should have ground connection.



4. Insert the end of drain hose into the hook shelf and hang the drain hose

5. Open the water faucet.



6. Put the wash load into the tub evenly.



7. Add the suitable quantity detergent into the wash drum.

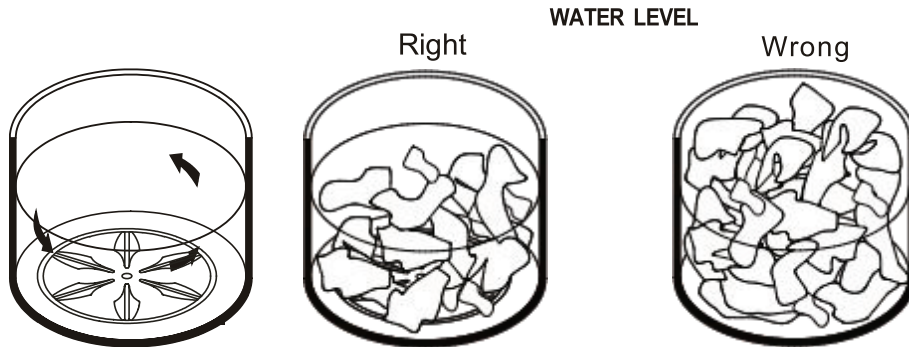
8. Close the lid, otherwise the washer will not wash or spin, and alarm will sound.



BEFORE WASHING














































Prepare the wash load. Mix large and small articles in a load to get the best washing results. Drop articles loosely into the inner tub. Do not pack articles in or wrap them. Articles should move freely through the wash water for best cleaning results. Articles should rollover, sink and then reappear.

When washing very large articles, do not fill inner tub as full as with other loads. The water level in your washer should fit the size of your wash load. Small load will use lower water levels. There must be enough water in the inner tub to allow articles to move and turn over freely. Overloading the inner tub can result in poor washing and rinsing. Overloading may also cause wrinkling and tearing of articles.



Make sure that you follow all manufacturer instructions for washing:

GUIDE TO APPAREL/TEXTILE CARE SYMBOLS

 Wash	<p>Machine Wash Cycles</p> <div style="display: flex; justify-content: space-around;"> <div style="text-align: center;">  Normal </div> <div style="text-align: center;">  Permanent Press </div> <div style="text-align: center;">  Delicate/ Gentle </div> </div> <p>Hand Wash</p> 	<p>Warning Symbols for Laundering</p> <div style="display: flex; flex-direction: column; align-items: center;"> <div style="text-align: center;">  Do Not Wash </div> <div style="text-align: center;">  Do Not Bleach </div> <div style="text-align: center;">  Do Not Dry (used with Do Not Wash) </div> <div style="text-align: center;">  Do Not Iron </div> </div>	
 Bleach	<p>Any Bleach When Needed</p> 	<p>Only Non-Chlorine Bleach When Needed</p> 	<p>Additional Instructions (in Symbols or Words)</p> <div style="display: flex; flex-direction: column; align-items: center;"> <div style="text-align: center;">  Do Not Wring </div> <div style="text-align: center;">  Do Not Tumble Dry </div> <div style="text-align: center;">  Dry Flat </div> </div>
 Dry	<p>Tumble Dry Cycles</p> <div style="display: flex; justify-content: space-around;"> <div style="text-align: center;">  Normal </div> <div style="text-align: center;">  Permanent Press </div> <div style="text-align: center;">  Delicate/ Gentle </div> </div> <p>Tumble Heat Settings</p> <div style="display: flex; justify-content: space-around;"> <div style="text-align: center;">  Any Heat </div> <div style="text-align: center;">  High </div> <div style="text-align: center;">  Medium </div> <div style="text-align: center;">  Low </div> <div style="text-align: center;">  No Heat/Air </div> </div> <p>Line Dry / Hang to Dry</p>  <p>Drip Dry</p>  <p>Dry Flat</p> 	<p>Additional Instructions (in Symbols or Words)</p> <div style="display: flex; flex-direction: column; align-items: center;"> <div style="text-align: center;">  Do Not Wring </div> <div style="text-align: center;">  Do Not Tumble Dry </div> <div style="text-align: center;">  Dry Flat </div> </div>	
 Iron	<p>Iron-Dry or Steam</p> <p>Maximum Temperatures</p> <div style="display: flex; justify-content: space-around;"> <div style="text-align: center;">  200C (390F) High </div> <div style="text-align: center;">  150C (300F) Medium </div> <div style="text-align: center;">  110C (230F) Low </div> </div>	<p>In the shade (added to line dry, drip dry, or dry flat)</p>  <p>No Steam (added to iron)</p> 	
 Dryclean	<p>Dryclean - Normal Cycle</p> <div style="display: flex; justify-content: space-around;"> <div style="text-align: center;">  Any Solvent </div> <div style="text-align: center;">  Any Solvent Except Trichloroethylene </div> <div style="text-align: center;">  Petroleum Solvent Only </div> </div> <p>Do Not Dryclean</p> 	<p>Dryclean - Additional Instructions</p> <div style="display: flex; justify-content: space-around;"> <div style="text-align: center;">  Short Cycle </div> <div style="text-align: center;">  Reduced Moisture </div> <div style="text-align: center;">  Low Heat </div> <div style="text-align: center;">  No Steam Finishing </div> </div>	

OPERATING INSTRUCTIONS

PRESS THE POWER BUTTON.

PRESS THE LOAD SIZE BUTTON.

Choose appropriate water level according to wash load quantity.
(In SPEED WASH program , the water level cannot be selected)

1	SMALL
2	MEDIUM **DEFAULT**
3	LARGE

WATER TEMPERATURE CHOICE.

Press and hold the load size button for approximately 3 seconds and, you can choose from cold, warm, and hot water.

Indicator Light Shown	Description
C	Cold Water -- Cold water inlet only
H	Hot Water -- Hot water inlet only
CH	Warm Water -- Water inlet for cold and hot water at the same time

NOTE: 1.The washer will provide a cold rinse in all temperature settings.

2. For avoiding damage to the internal parts of the machine, it is recommended that the inlet water temperature be below **140 °F**.

PRESS THE PROGRAM SELECTION BUTTON.

Choose the desired function and then the corresponding indicator blink .

1	NORMAL	5	SPIN ONLY
2	COTTON ** DEFAULT **	6	WHITES
3	GENTLE WASH	7	HEAVY SOIL
4	SPEED WASH	8	TUB CLEAN

AUTOMATIC WASH PROGRAMS

Program	Water Level		Wash Time (Approx)	Rinse Times	Final Spin Time	Total Time (Approx)	Delay Start Option
	Default Setting	Available Settings					
NORMAL	MEDIUM	S, M, L	15	1	9	33	YES
COTTON	MEDIUM	S, M, L	11 – 15	2	7	38 -42	YES
GENTLE	MEDIUM	S, M, L	9 – 13	2	5	34 – 38	YES
SPEED WASH	SMALL	S, M, L	6 – 8	1	5	21 – 25	YES
SPIN	-	-	-	-	7	7	NO
WHITES	MEDIUM	S, M, L	9- 13	2	5	32 – 36	YES
HEAVY SOIL	MEDIUM	S, M, L	15 – 19	2	7	42 – 46	YES
TUB CLEAN	LARGE	LARGE	28	1	5	43	NO

NOTE: ALL AUTOMATIC WASH PROGRAMS INCLUDE SOAK TIME.

To select one of the pre-programmed automatic wash cycles, follow the instructions as shown below:

- Close the lid.
- Press the power button.
- **Press the program button to select the appropriate program until the program number is shown in the display window. (Cotton is the default program) .**
- **For routine / normal washing it is recommended to use the NORMAL program and only use the HEAVY SOIL setting for large loads or when washing items that are excessively soiled.**
- Press the Load size button to select the appropriate load size . (The default is 2 Medium).
- Press the START/PAUSE to start the cycle. And the LED display will show the remaining time of the entire course.

PRESS DOWN START/ PAUSE BUTTON ONCE AND THE MACHINE WILL BEGIN OPERATION.

Please press this button to stop the normal operation, if it continues to work , press it again.
Water level can be reset during the normal operation after pressing the PAUSE button. If the higher water level is selected, the machine will operate after refilling the water level selected.

FULLY AUTOMATIC – FUZZY LOGIC PROGRAM.

Your machine incorporates the fuzzy logic program , which will automatically select the load size and select the cotton wash program .

Press the Power button.

Press the Start / Pause button, the tub will start to spin back and forth the weigh the clothes in the tub and then will be operation.

The machine will work in the Cotton wash program as a default.

In the event the clothing being washed becomes unbalanced, the safety switch will be activated, and the washing machine will automatically refill with water to adjust the imbalance.

Note:

- Clothes easily discolored should be washed separately so as to prevent inter-dyeing .
- If you want to change a selected program , press the POWER button first to turn the unit off, then press the POWER button again to turn the unit back on, then press the Program button to select the new cycle before pushing START/PAUSE button.
- When the Rinse and Spin functions are ON, do not use detergent.
- If you want to drain the water during washing, press the POWER button first to turn the unit off, then press the POWER button again to turn the unit back on, then select the SPIN function. Press START/PAUSE button again to restart.

ADDING / REMOVING CLOTHING AFTER THE CYCLE HAS STARTED

Your washing machine is equipped with a safety system that will stop the machine when the lid is opened during a wash cycle.

To add or remove clothing to/from a wash cycle follow the steps below:

- **Open the lid, the machine will stop (E2 will flash in the display and a beep will sound).**
- **Add or remove the clothing as needed.**
- **Close the lid, the washing machine will continue the previous wash cycle.**

DELAY START

Your machine can be programmed to start at a later time, to activate the delay start program (2 – 24 hours) follow these steps:

Press the Power button.

Select the desired wash program by pressing the program button until the wash program number is shown in the display window.

Press the load size button to select the size of laundry load to be washed .

Hold the program button for approximately 3 seconds, “2” will be shown in the window, press the program button to select the desired start time.

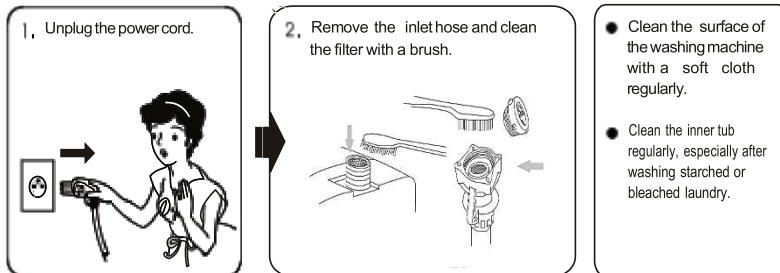
Press the START / PAUSE button to activate .

The preset start time and (•) will flash in the display window. Once the delay time has elapsed, the washer will begin the pre-programmed wash cycle.

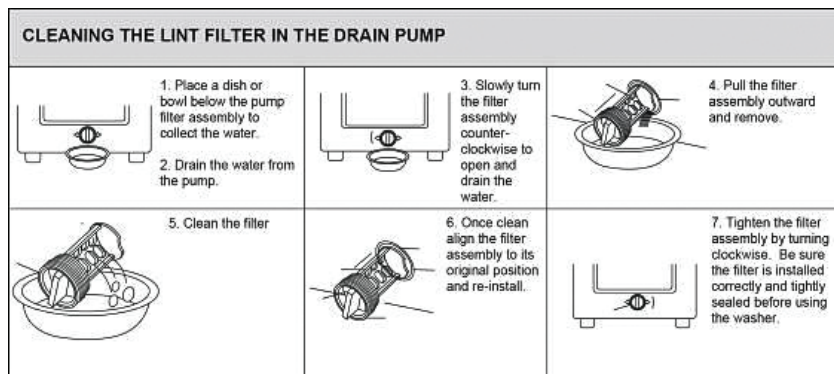
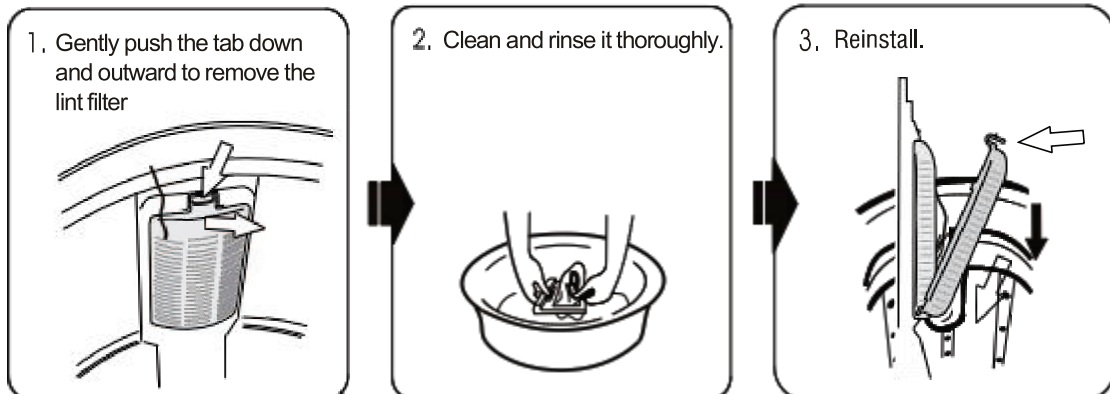
CARE AND MAINTENANCE

CLEANING YOUR PORTABLE WASHER

- Clean the surface of your portable washer regularly with soft fabric.
- Clean the inner tub regularly, especially immediately after starch or bleach operation.
- Clean the filter in the inlet valve or inlet hose regularly in order to prevent it from clogging.

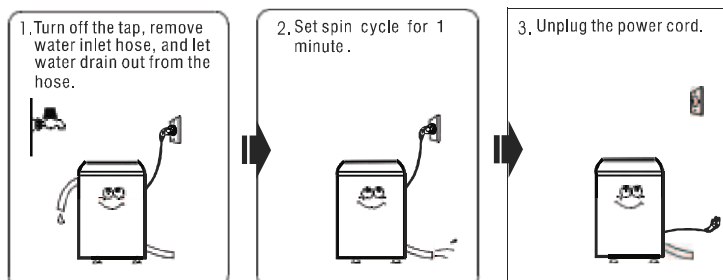


- Clean the lint filter.



NOTICE:
If the drain filter is not cleaned frequently (approximately after every 10 uses). Drain problems may arise.

Vacation time



PROBLEMS WITH YOUR PORTABLE WASHER?

You can solve many common portable washer problems easily, saving you the cost of a possible service call. Try the suggestions below to see if you can solve the problem before calling the servicer.

TROUBLESHOOTING GUIDE

Indicator Light -- PROBLEM	POSSIBLE CAUSE	How to fix
E1- Drainage Fault	<ul style="list-style-type: none"> ● Water drainage has taken over 7 minutes. ● Drain valve blocked, damaged or faulty. ● Drain pipe is damaged. 	<ul style="list-style-type: none"> ● Press the start/stop button once. ● Reposition the drain pipe for a more smooth water drainage, or remove the blockage from the drain valve, once done open and close the cover 1 time to restart operation.
E2- Top Cover Fault	<ul style="list-style-type: none"> ● Top Lid has been opened during operation. 	<ul style="list-style-type: none"> ● Close the top lid and press the START/PAUSE button to continue the wash cycle.
E3- Spin Fault	<ul style="list-style-type: none"> ● Clothes are not level or balanced. ● The machine is standing at an incline. 	<ul style="list-style-type: none"> ● Reposition the clothes in the tub so they are balanced and level and close the cover. ● Place the washing machine on a level surface, once done
E0- Water Inlet Fault	<ul style="list-style-type: none"> ● Incoming water has taken over 20 minutes to reach water level. ● The Inlet Valve is blocked or obstructed. ● The Water supply is cut off or the stopcock is open. 	<ul style="list-style-type: none"> ● Check the reason for low water pressure, open and close the cover 1 time to restart operation. ● Remove the blockage from the inlet valve, or turn on the water supply or stopcock, once done open and close the cover 1 time to restart operation.
E4- Water Level Fault	<ul style="list-style-type: none"> ● Water level sensor fault. ● Water Leakage. ● Harness contact is loose. ● Airway tube is loose. 	<ul style="list-style-type: none"> ● Unplug the machine, wait 10 seconds and replug the machine. If issue continues set water level to normal and restart the machine.
E5- Child Protection	<ul style="list-style-type: none"> ● Machine is Child locked but the cover has been opened. 	<ul style="list-style-type: none"> ● Ensure that your child is a safe distance from the machine and close the cover.
E9- Overflow Protection	<ul style="list-style-type: none"> ● The water level exceeds the overflow protection height, and drainage treatment is carried out. ● More than 3 times, the buzzer alarm processing 	<ul style="list-style-type: none"> ● Adjust the water level to the highest level.
dE- Door Cover Fault	<ul style="list-style-type: none"> ● In standby mode, two door covers, one high and one low level (for 5 seconds). 	<ul style="list-style-type: none"> ● Power off
CE- Clock Fault	<ul style="list-style-type: none"> ● MCU detects clock anomaly. 	<ul style="list-style-type: none"> ● Power off

PROBLEM	POSSIBLE CAUSE
Washer does not operate.	Not plugged in. The circuit breaker tripped or a blown fuse. The lid is not closed. Make sure the water source is turned on
No water or insufficient water supply.	The water source faucet is not turned on. The water source hose is frozen. The water intake hose is bent . The filter on the water intake hose is clogged.
The washing machine does not drain.	The drain hose is squashed or bent.
Washing machine vibrates or is too noisy.	Check to assure that the washer is level. The washing machine is touching another object. The laundry load is not balanced .
Washing machine does not spin.	The lid is not closed. The washer is not on a level surface.

SERVICE FOR YOUR PORTABLE WASHER

We are proud of our customer service organization and the network of professional service technicians that provide service on your Nictemaw portable washers. With the purchase of your Nictemaw portable washer, you can be confident that if you ever need additional information or assistance, the Nictemaw Products Customer Service Team will be here for you. Just call us toll-free.

YOUR NICTEMAW PRODUCTS WARRANTY	Staple your sales receipt here. Proof of original purchase date is needed to obtain service under warranty.
------------------------------------	---

WHAT IS COVERED – LIMITED ONE-YEAR WARRANTY

Nictemaw Products warrants that the product is free from defects in materials and/or workmanship for a period of twelve (12) months from the date of purchase by the original owner. The foregoing timeline begins to run upon the date of purchase, and shall not be stalled, tolled, extended, or suspended for any reason whatsoever unless described in detail in the warranty document . For one year from the date of purchase by the original owner, Nictemaw products will, at its option, repair or replace any part of the product which proves to be defective in material or workmanship under normal use. Nictemaw Products will provide you with a reasonably similar product that is either new or factory refurbished . During this period Nictemaw Products will provide all parts and labor necessary to correct such defects free of charge , so long as the product has been installed and operated in accordance with the written instructions in this manual. In rental or commercial use, the warranty period is 90 days. All Nictemaw appliances of 4.2 cubic feet capacity or less must be brought/sent to the appliance service center for repair.

LIMITED FIVE-YEAR WARRANTY ON PLASTIC TU

After one year and until five years from the date of purchase, Nictemaw Products will furnish a replacement plastic tub, for one which is defective in material or workmanship. All labor and transportation charges are the responsibility of the consumer.

LIMITED SEVEN YEAR WARRANTY ON STAINLESS STEEL TUB

After one year and until seven years from the date of purchase, Nictemaw Products will furnish a replacement plastic tub, for one which is defective in material or workmanship. All labor and transportation charges are the responsibility of the consumer.

WARRANTY EXCLUSIONS / WHAT IS NOT COVERED:

The warranty coverage described herein excludes all defects or damage that are not the direct fault of Nictemaw Products, including without limitation, one or more of the following:

- A failure to comply with any applicable state, local, city, or county electrical, plumbing and/or building codes, regulations, or laws, including failure to install the product in strict conformity with local fire and building codes and regulations.
- Any external, elemental and/or environmental forces and factors, including without limitation, rain, wind, sand, floods, fires, mud slides, freezing temperatures, excessive moisture or extended exposure to humidity, lightning, power surges, structural failures surrounding the appliance, and acts of God.

<ul style="list-style-type: none"> ● Shipping and handling costs associated with the replacement of the unit. ● Repairs performed by unauthorized servicers. ● Service calls that are related to external problems, such as abuse, misuse, inadequate electrical power, accidents, fire, floods, or any other acts of God. 	<ul style="list-style-type: none"> ● Failure of the product if it is used for other than it intended purpose. ● The warranty does not apply outside the Continental USA. ● Surcharges including but not limited to, any after hour, weekend, or holiday service calls, tolls, ferry trip charges, or mileage expense for service calls to remote areas.
---	--

OUT OF WARRANTY PRODUCT

Nictemaw Products is under no obligation, at law or otherwise, to provide you with any concessions, including repairs, pro-rates, or product replacement, once this warranty has expired.

Warranty – Washing Machines