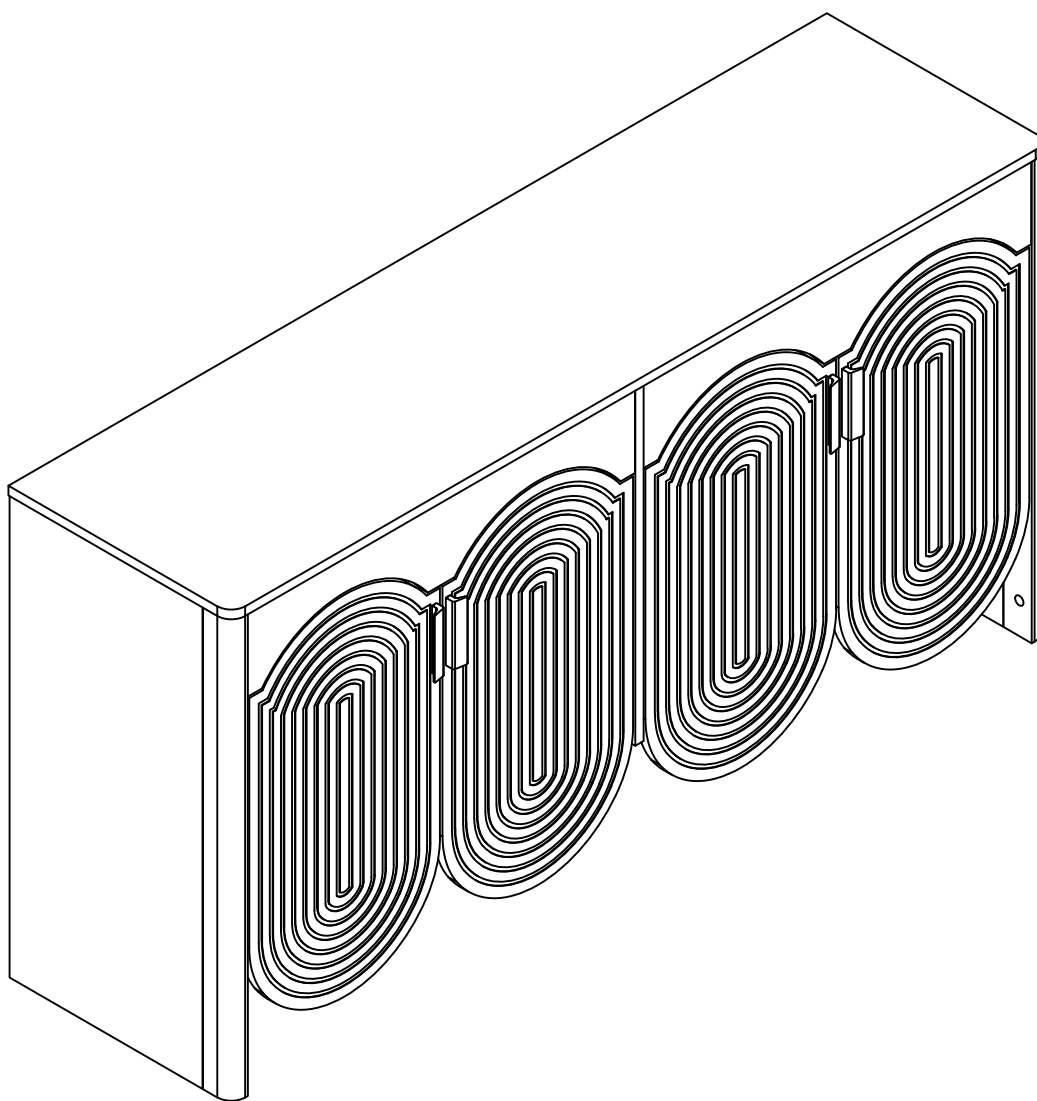


# Installation Instruction



# Assembling

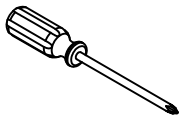
Estimated time for assembly



**45 : 00**

## What you need

- Use the packaging carton as a working surface to prevent product damage during assembly
- Phillips head screwdriver



## Weight Limitation

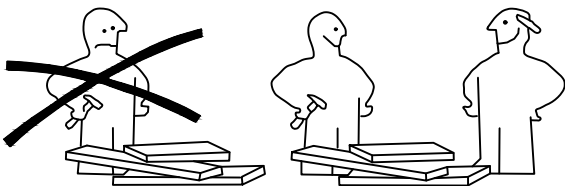


**100**

lbs table top

**35**

lbs per

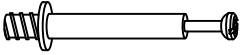


# What' included

Code	Description	Qty
A	Cam Bolt M6X35MM	32
B	Cam Lock 15X10MM	32
C	Wooden Dowel M8X30MM	22
D	Screw M4X40MM	4
E	Screw M3.5X14MM	66
F	Shelf Holder	8
G	NMetal connector	2
H	Shelf Holder	8
I	Cam Bolt M4X18MM	8
J	The back button	16
K	Anchor	2
L	MATS	4
M	Metal shake handhandle	4
N	Self-adhesive hole sticker	32
O	Adjustable foot pads	1
P	The metal plate	1
Q	Screw M3.5X14MM	4
R	Wooden Dowel M8X50MM	1

# The Hardwares

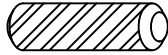
Ⓐ



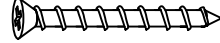
Ⓑ



Ⓒ



Ⓓ



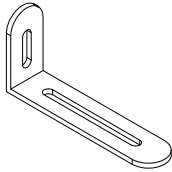
Ⓔ



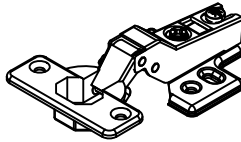
Ⓕ



Ⓖ



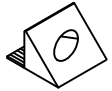
Ⓗ



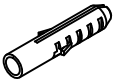
Ⓘ



Ⓙ



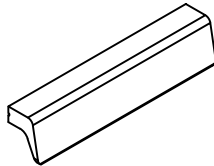
Ⓚ



Ⓛ



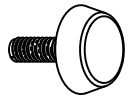
Ⓜ



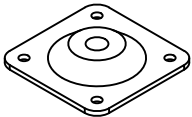
Ⓝ



Ⓞ



Ⓟ



Ⓠ



Ⓡ



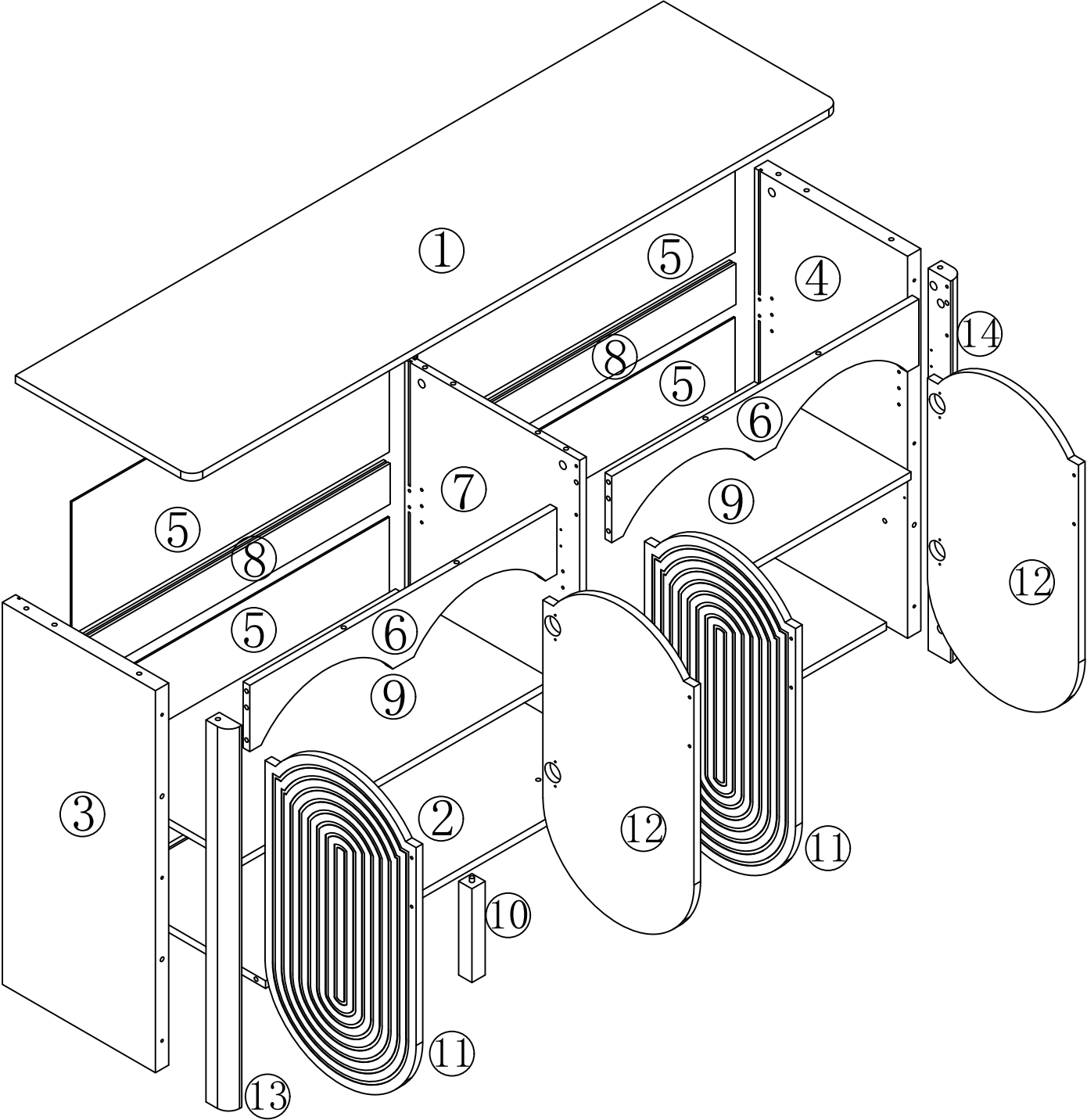
## IMPORTANT:

1. Do not tighten bolts / screws completely until all bolts / screws are lined up and inserted into holes.
2. Do not over tighten screws and bolts to avoid stripping
3. Please use hand tools to assemble this product. Do not use power tools.

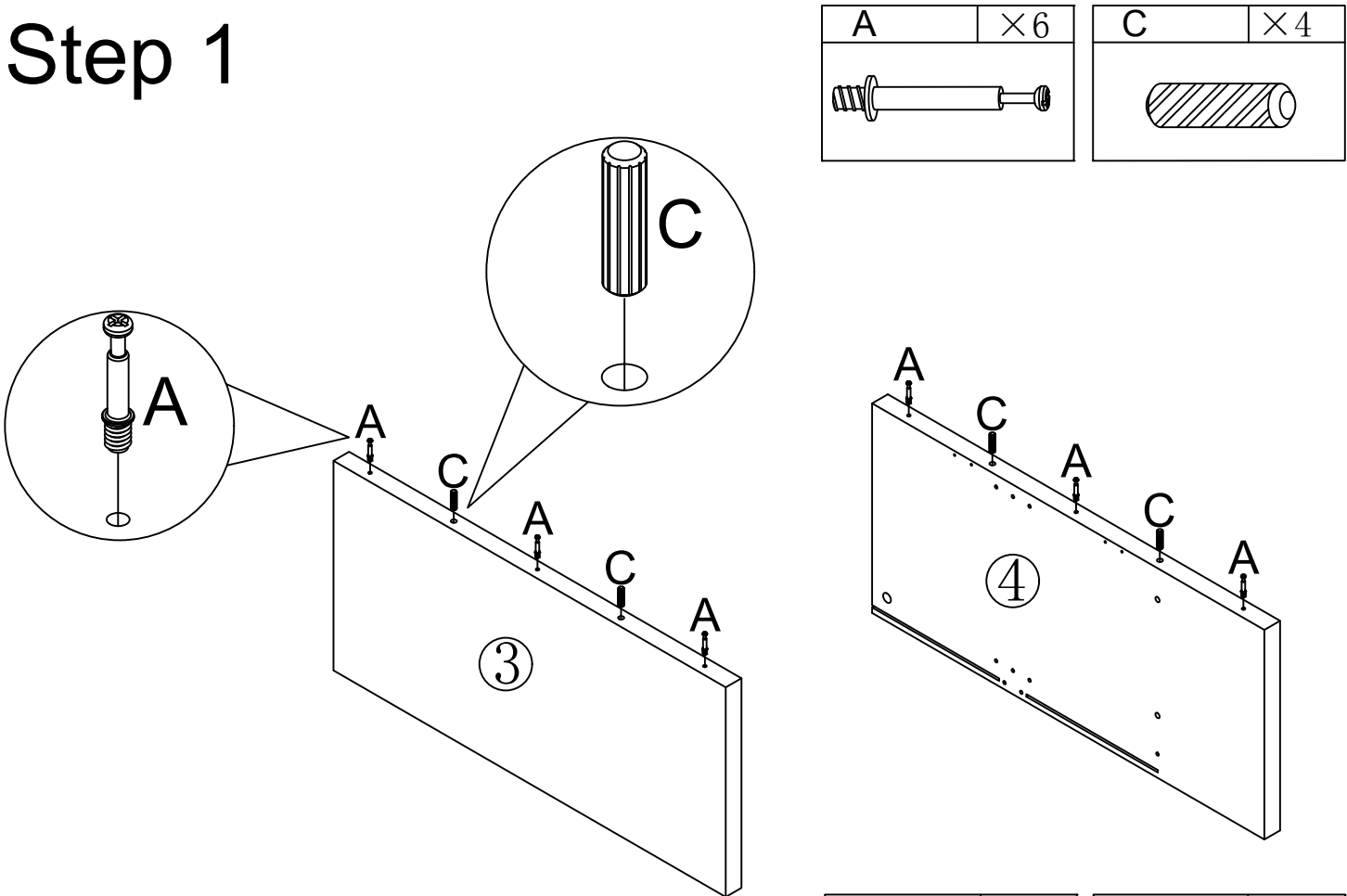
# Included Accessories

Code	Description	Qty
1	Cabinet Top	1
2	Bottom Panel	1
3	Left Side Panel	1
4	Right Side Panel	1
5	On the rear panell	4
6	Under the panel	2
7	Right door panel	1
8	Back reinforcement plate	2
9	Movable laminated plate	2
10	Solid wood feet	1
11	Crura medius	2
12	Door leaf	2

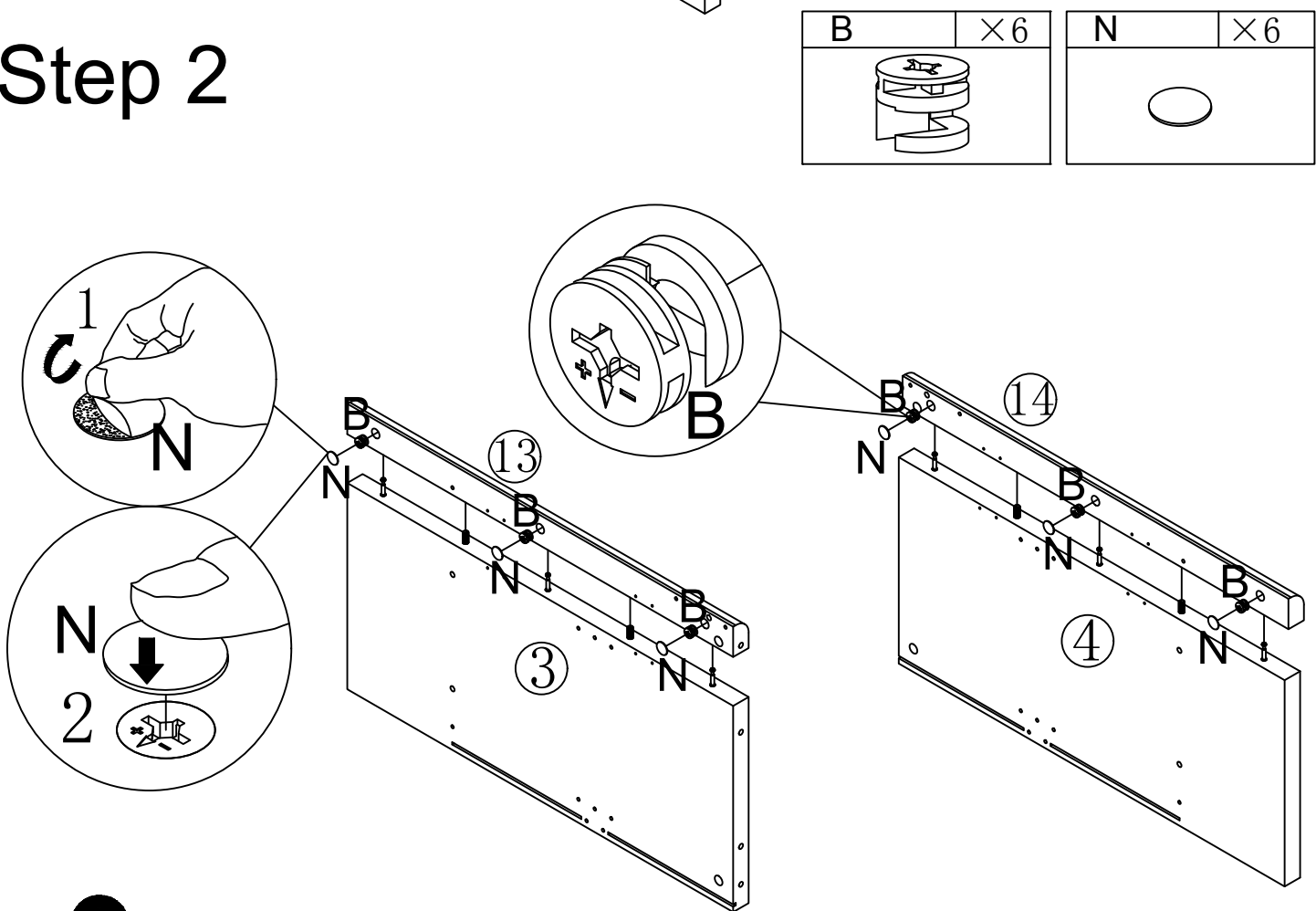
# The Accessoriess



# Step 1

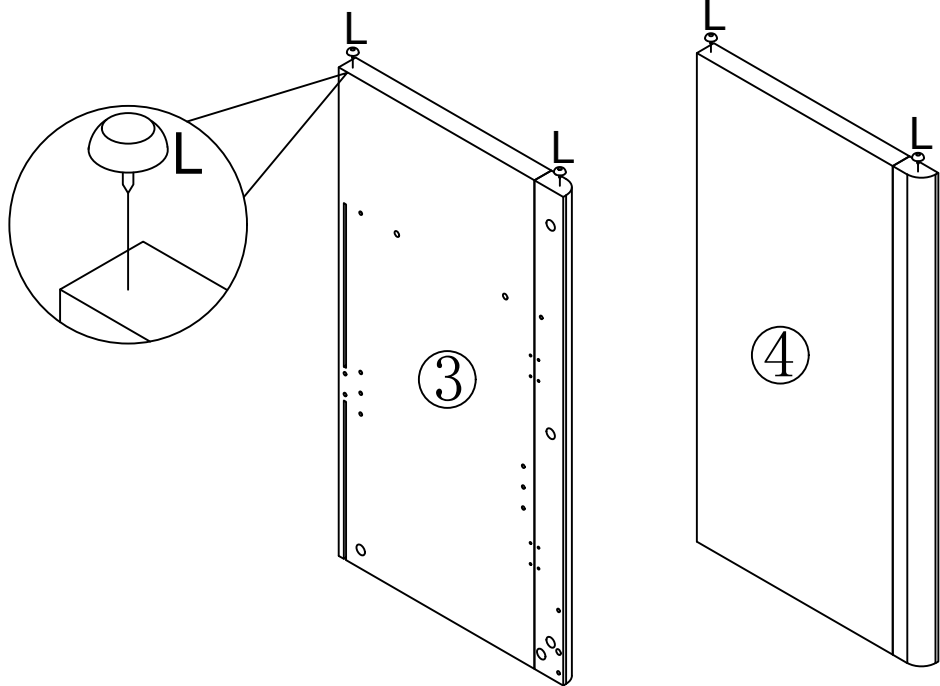



# Step 2



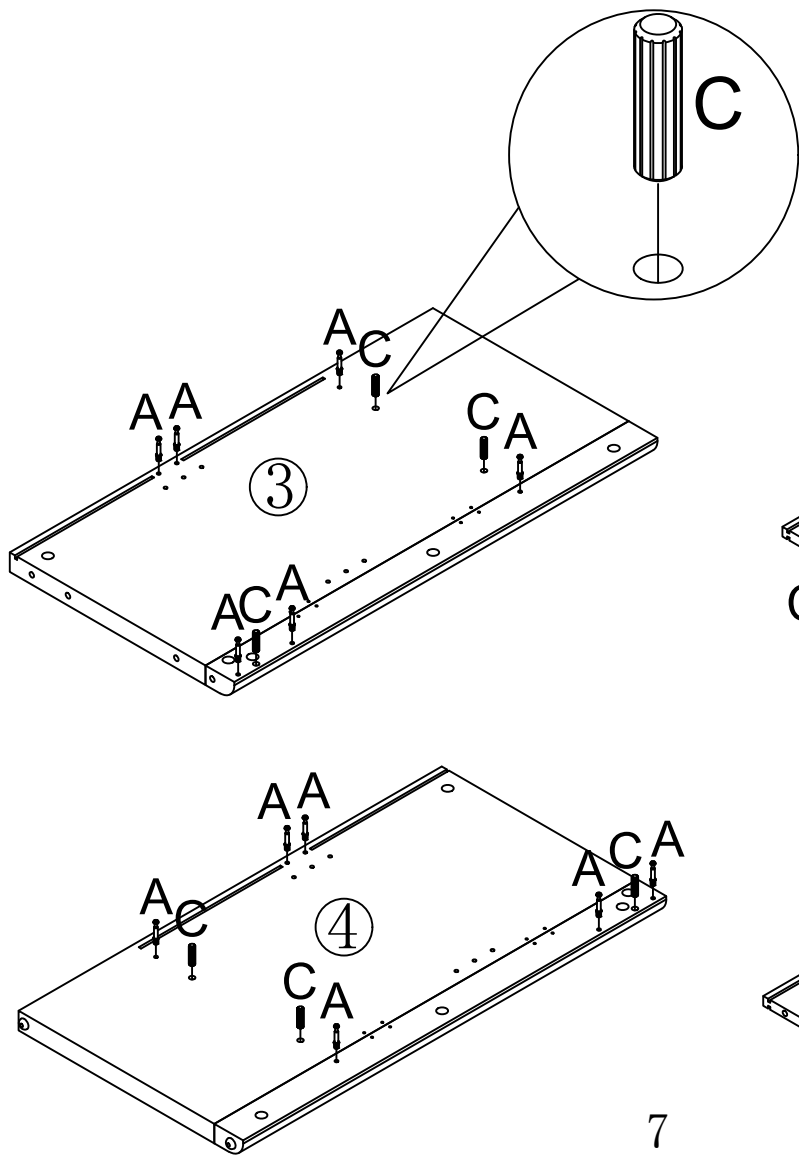
Note that the arc of parts ⑬-⑭ faces outward

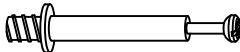
# Step 3




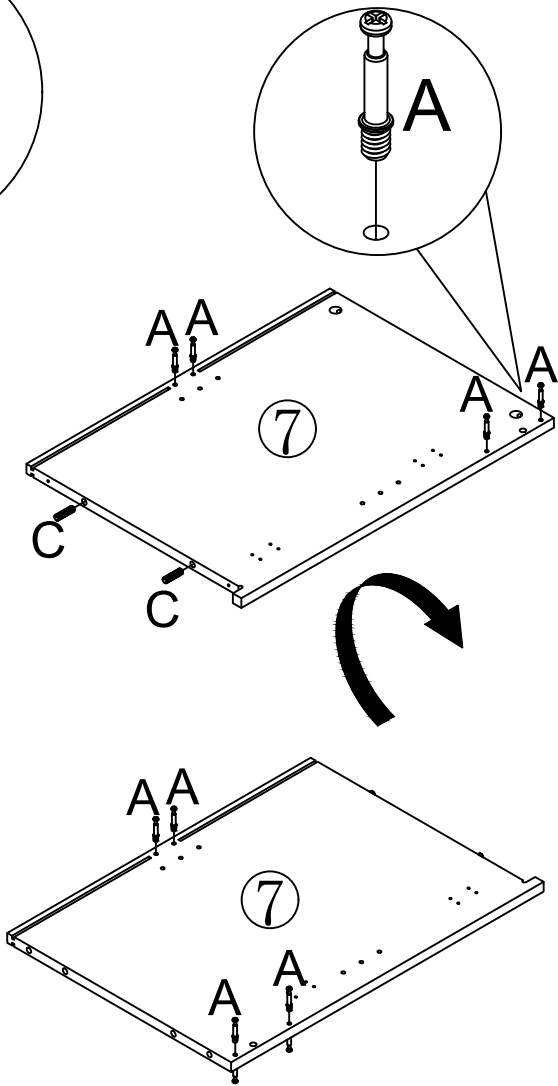
L	×4
	

# Step 4

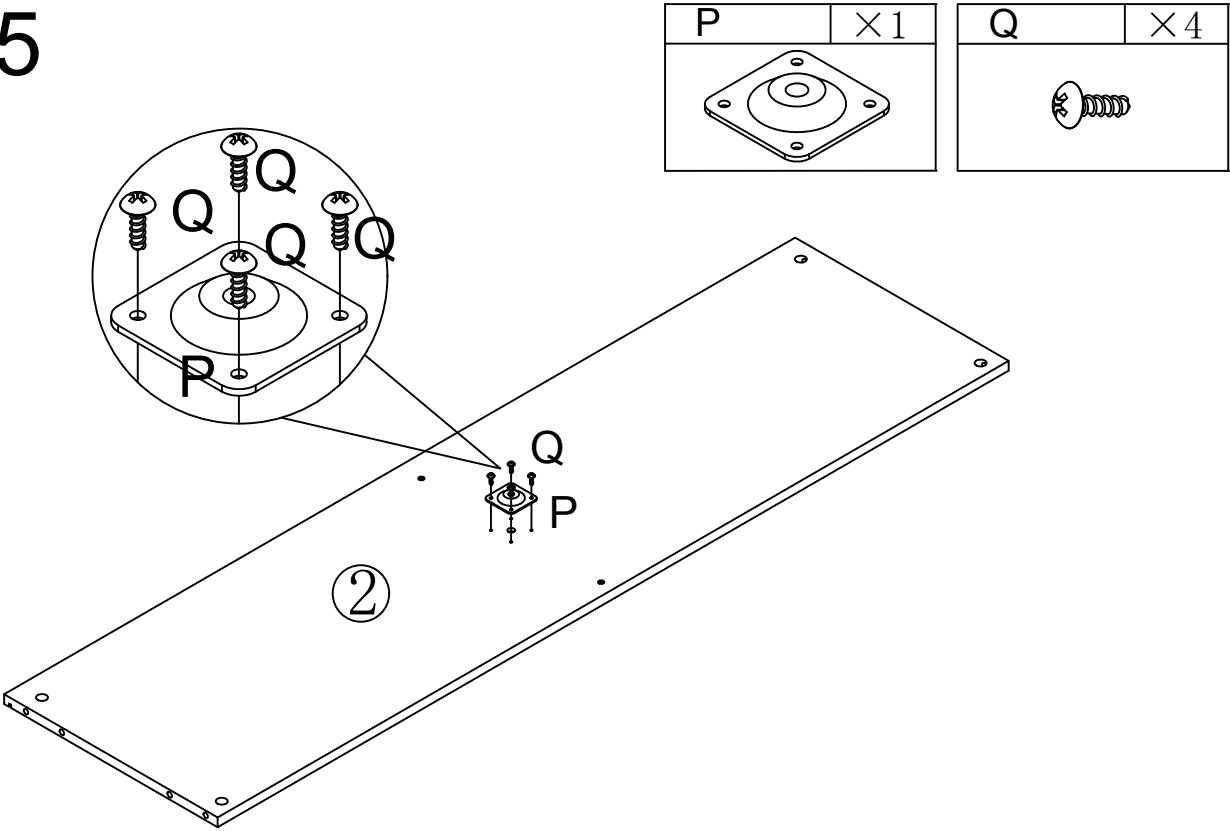


A	×20
	

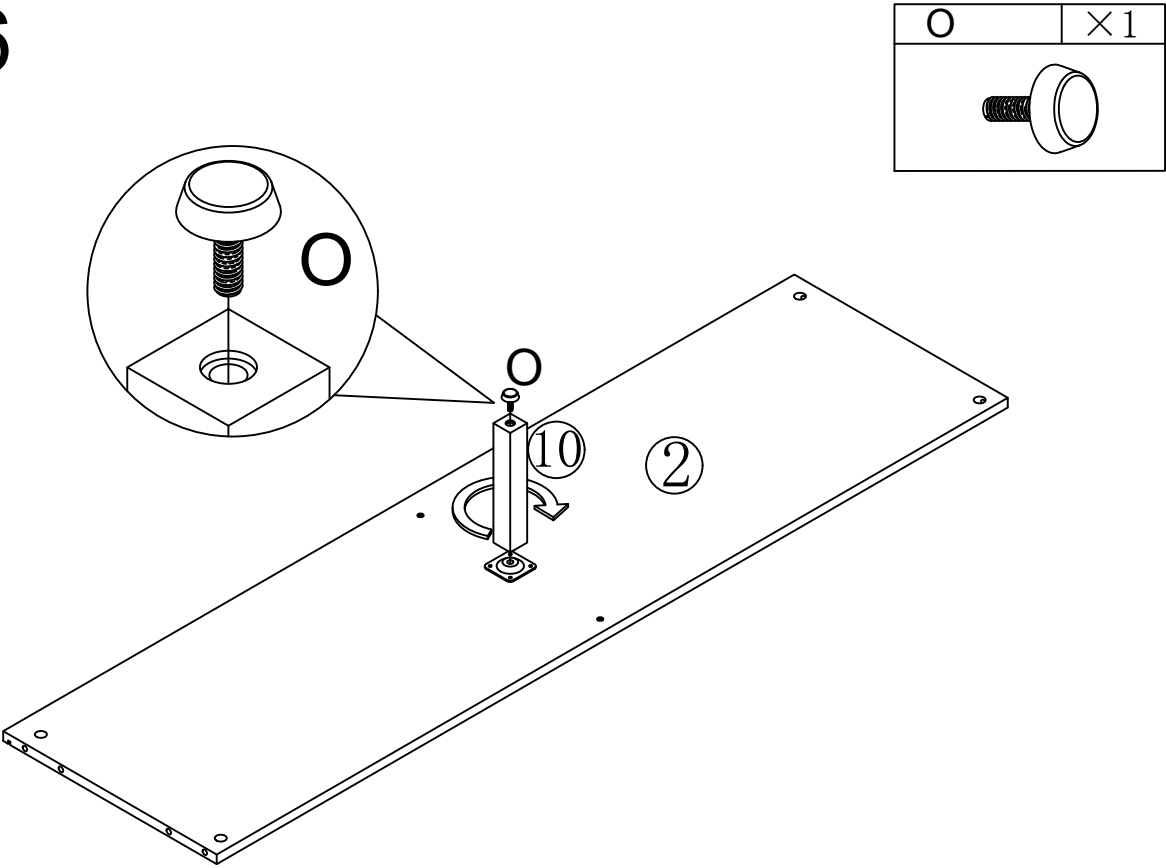
C	×8
	



# Step 5

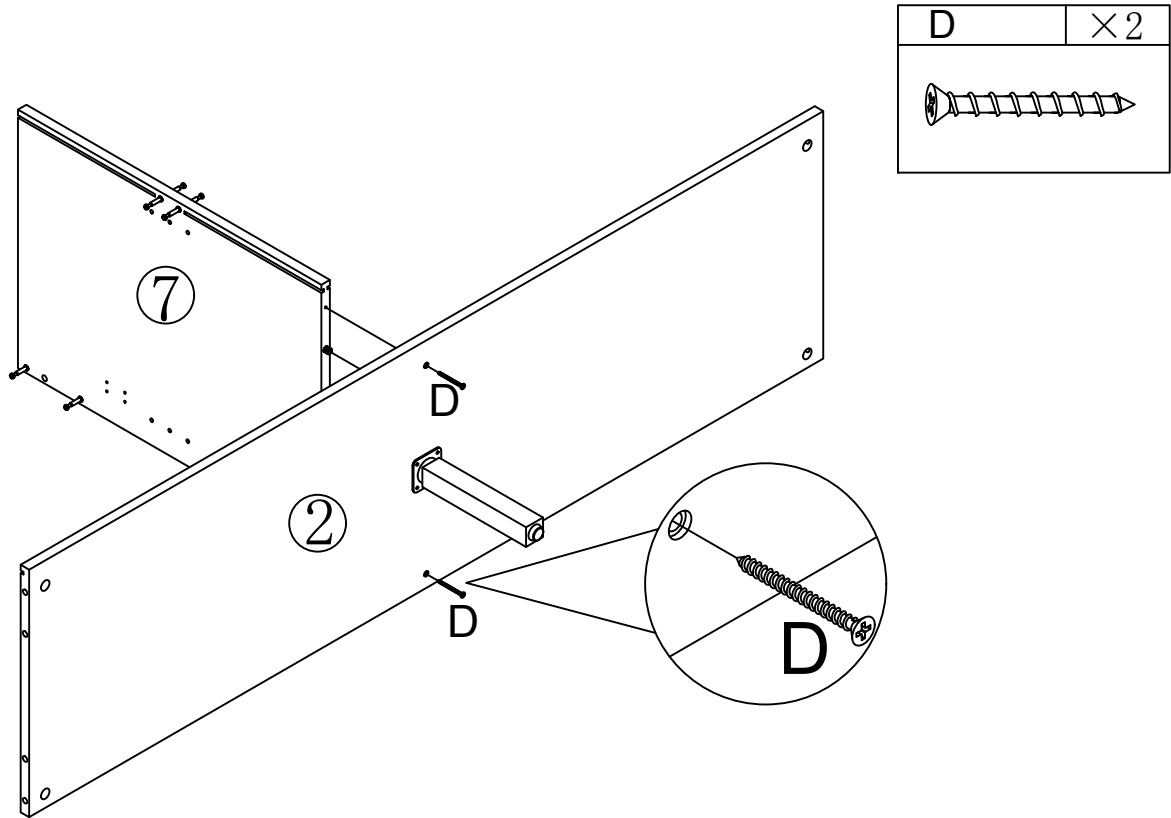


# Step 6

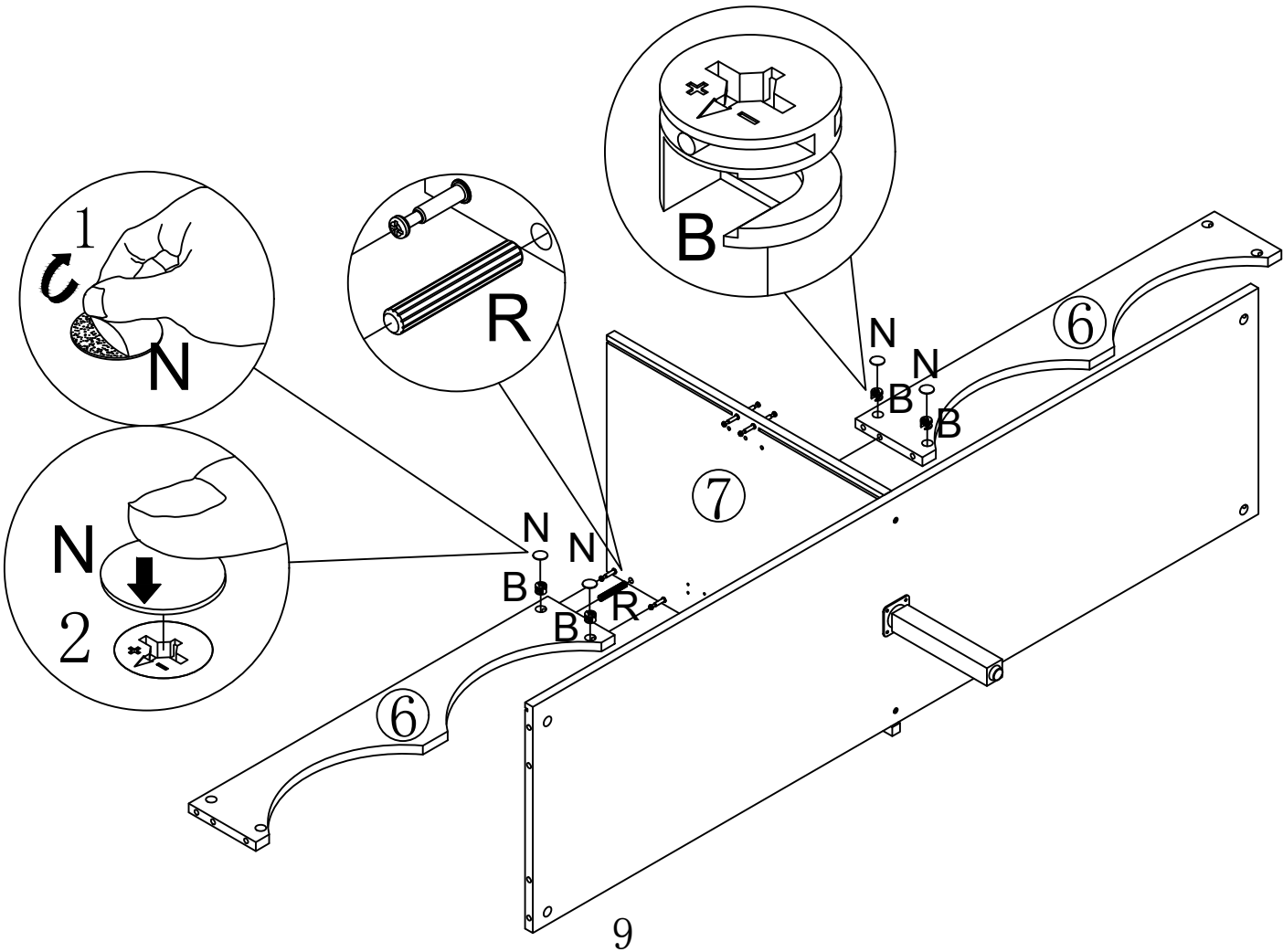
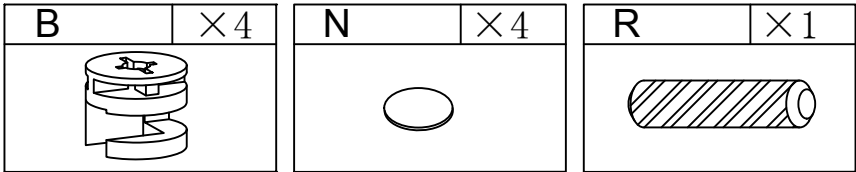






# Step 7

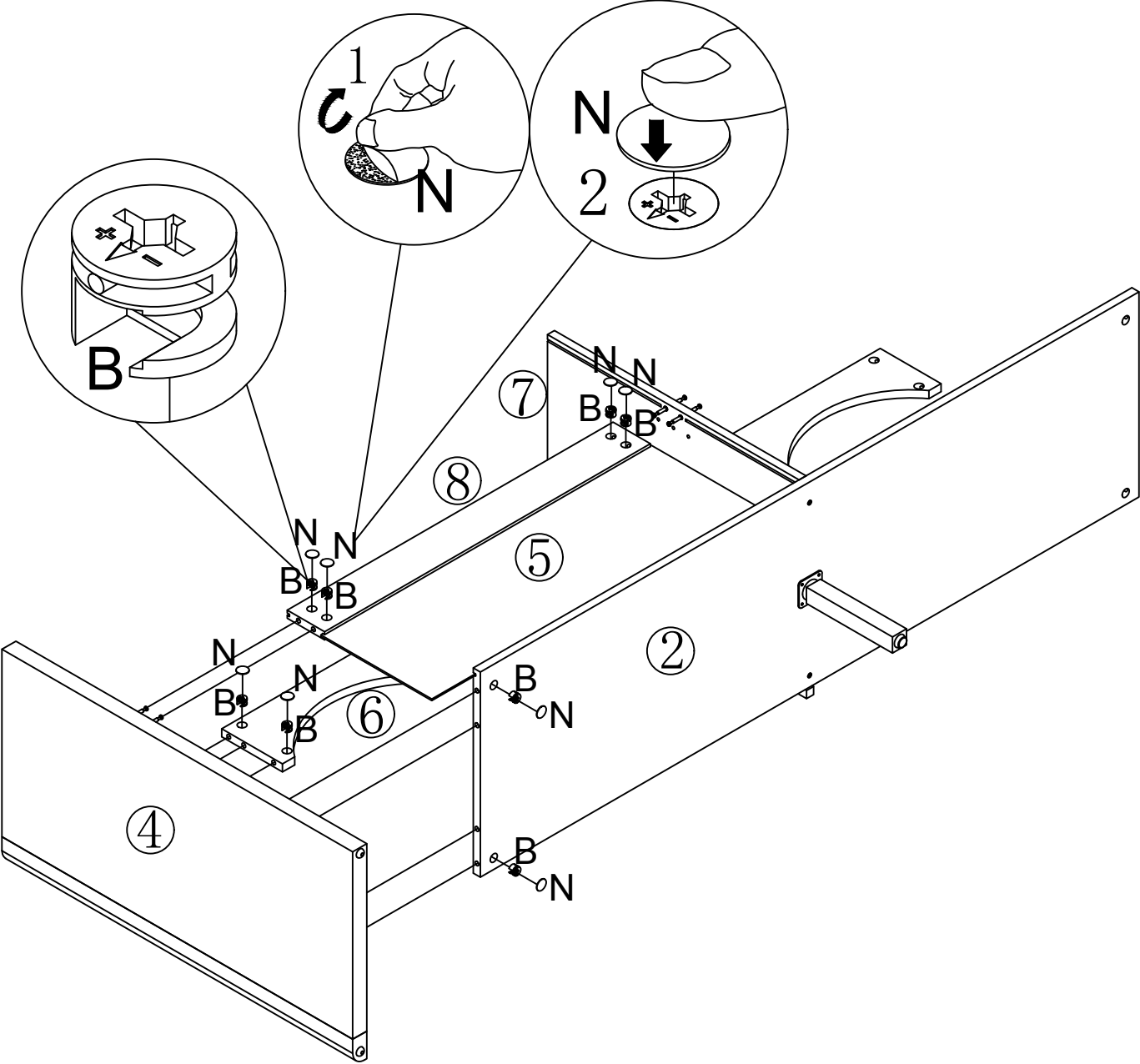


# Step 8





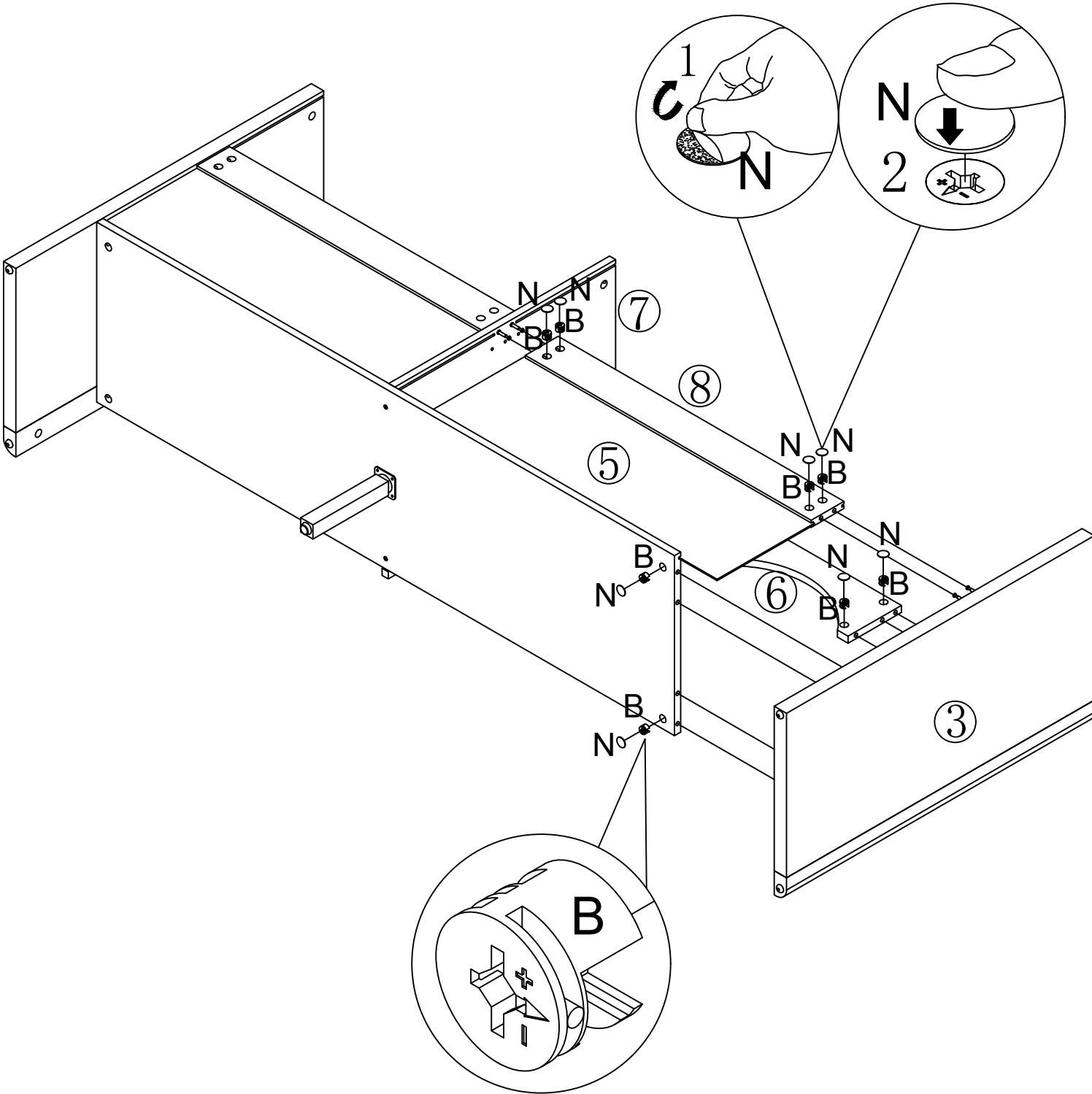
# Step 9

B	×8	N	×8
			

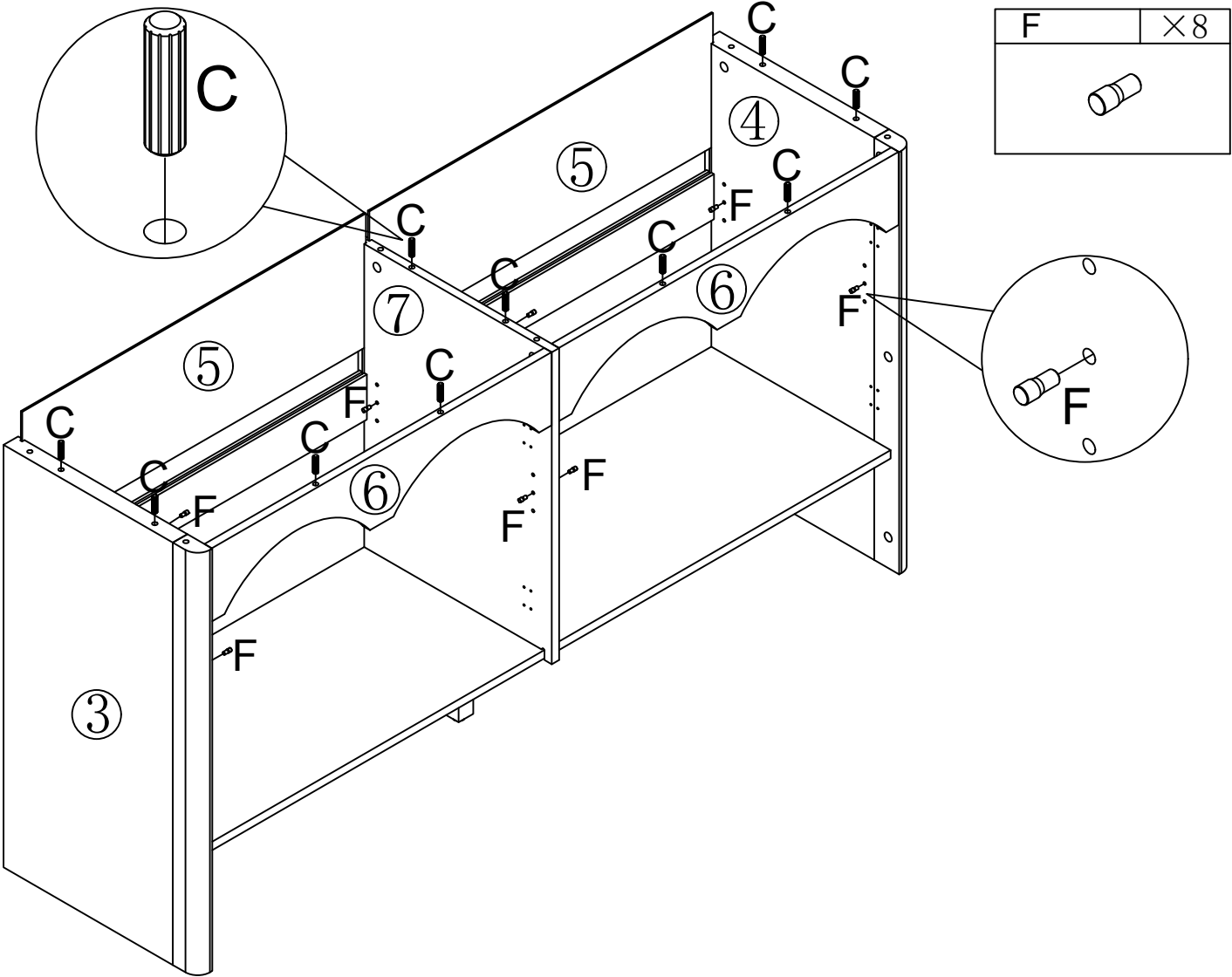


# Step 10

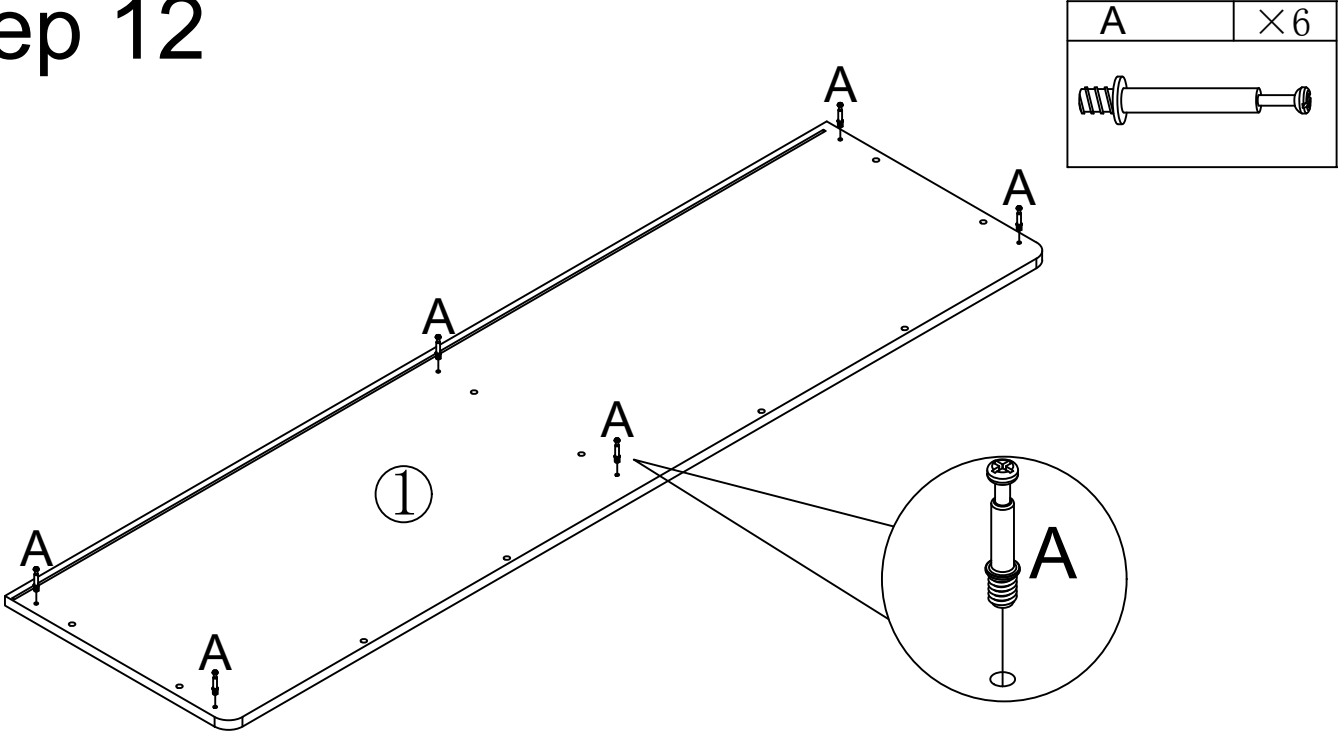
B	×8	N	×8
			





# Step 11

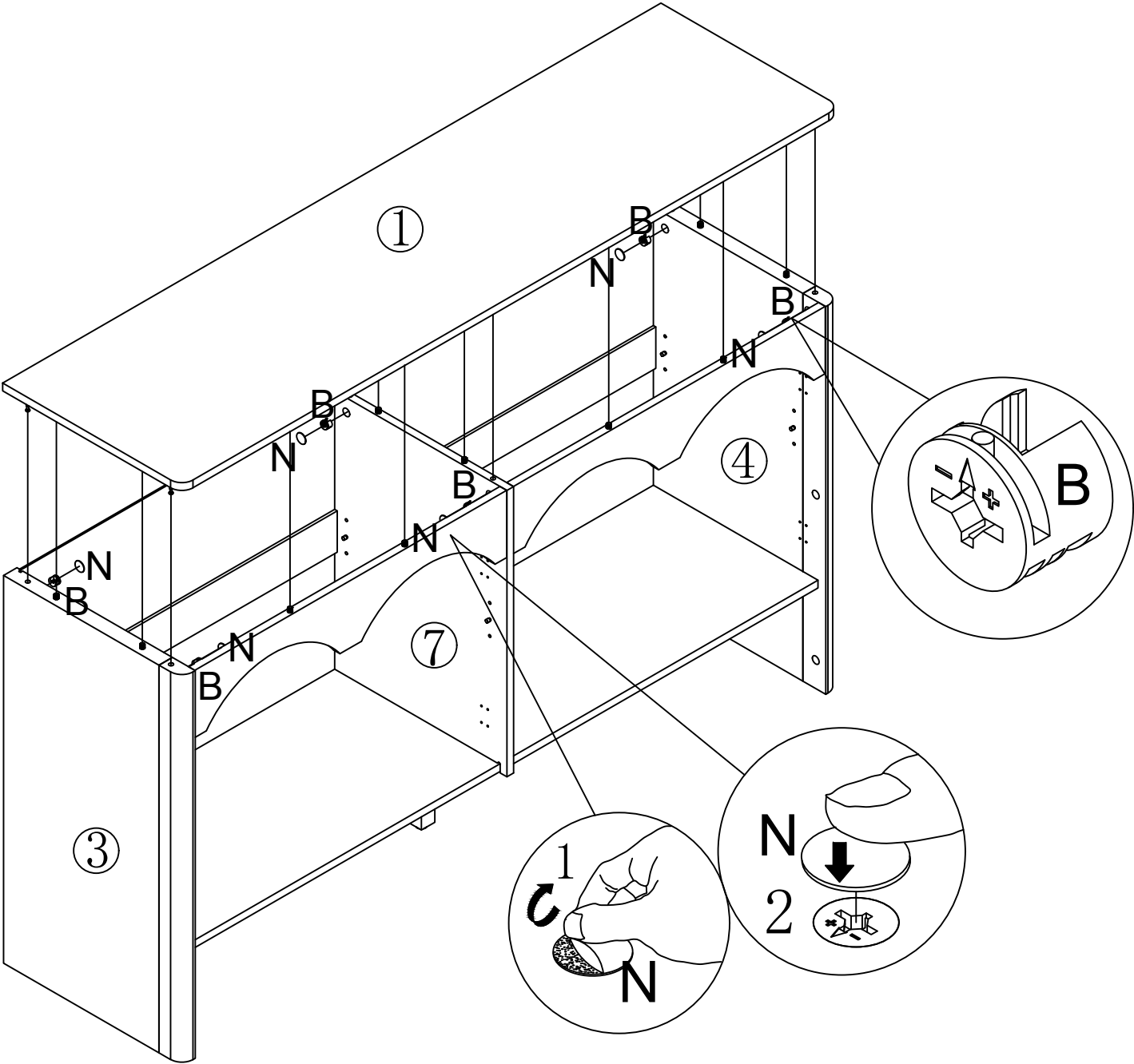


# Step 12

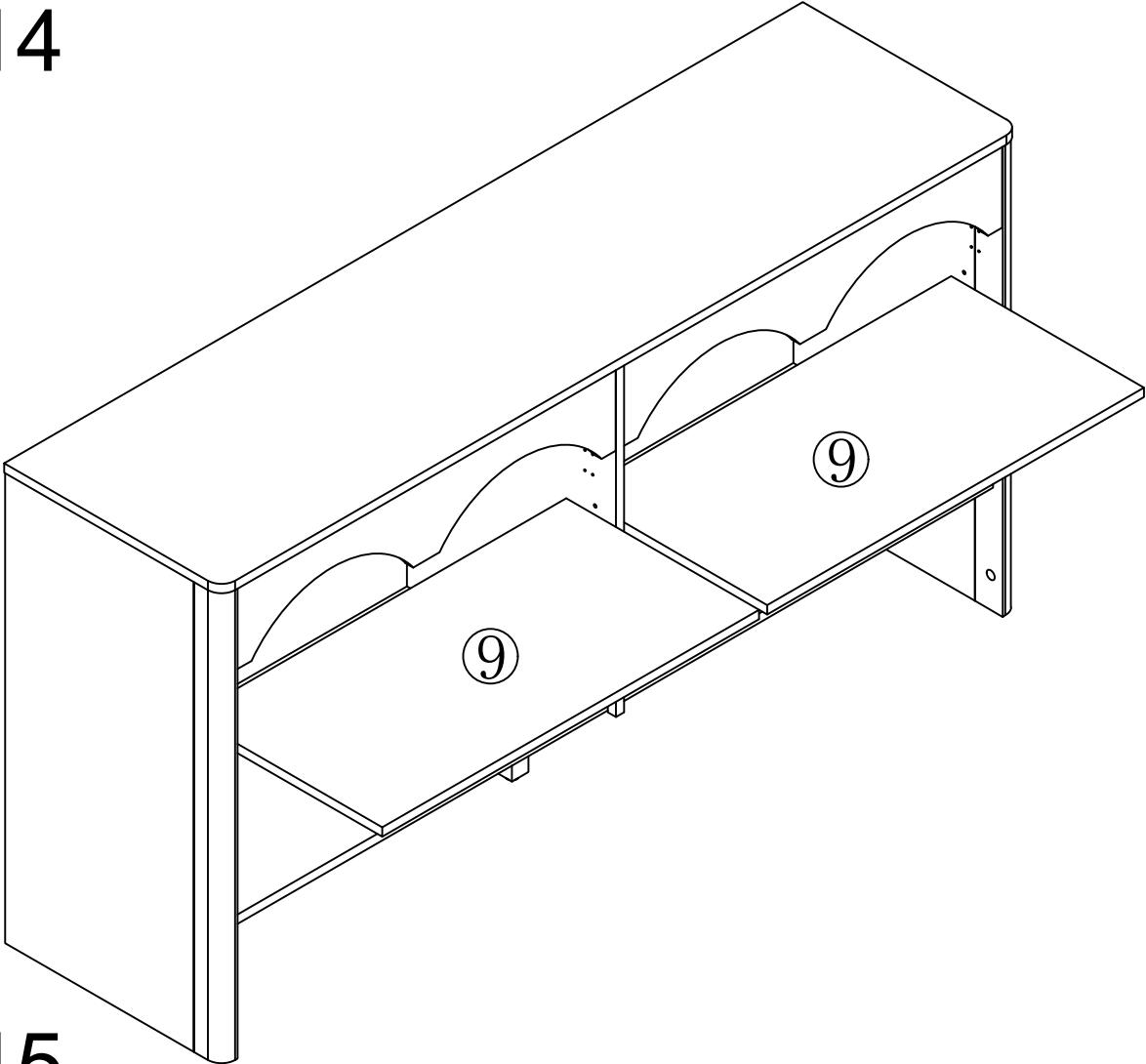


# Step 13


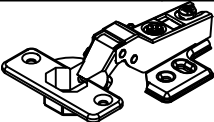

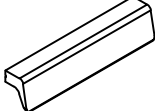
B	×6	N	×6
			

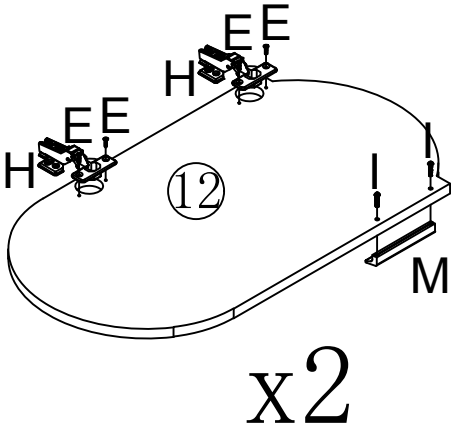
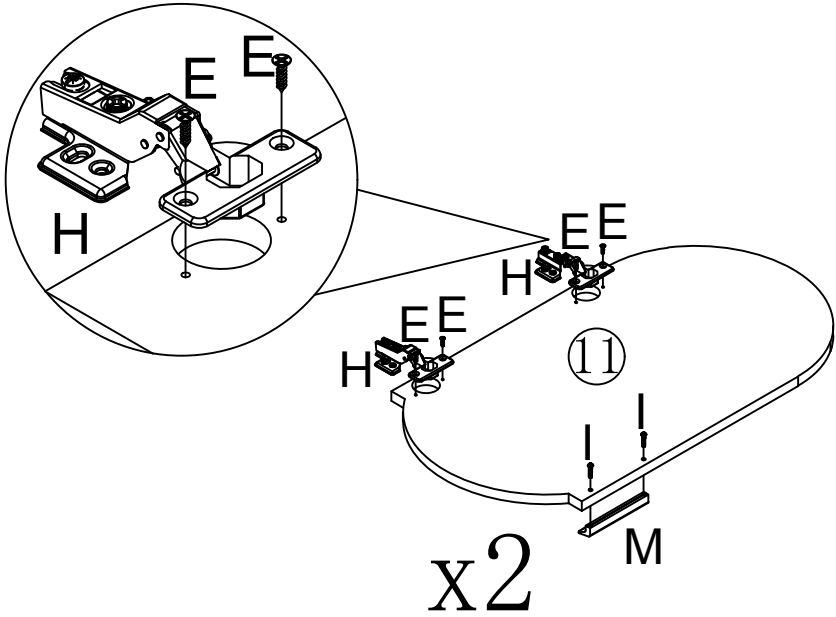


# Step 14




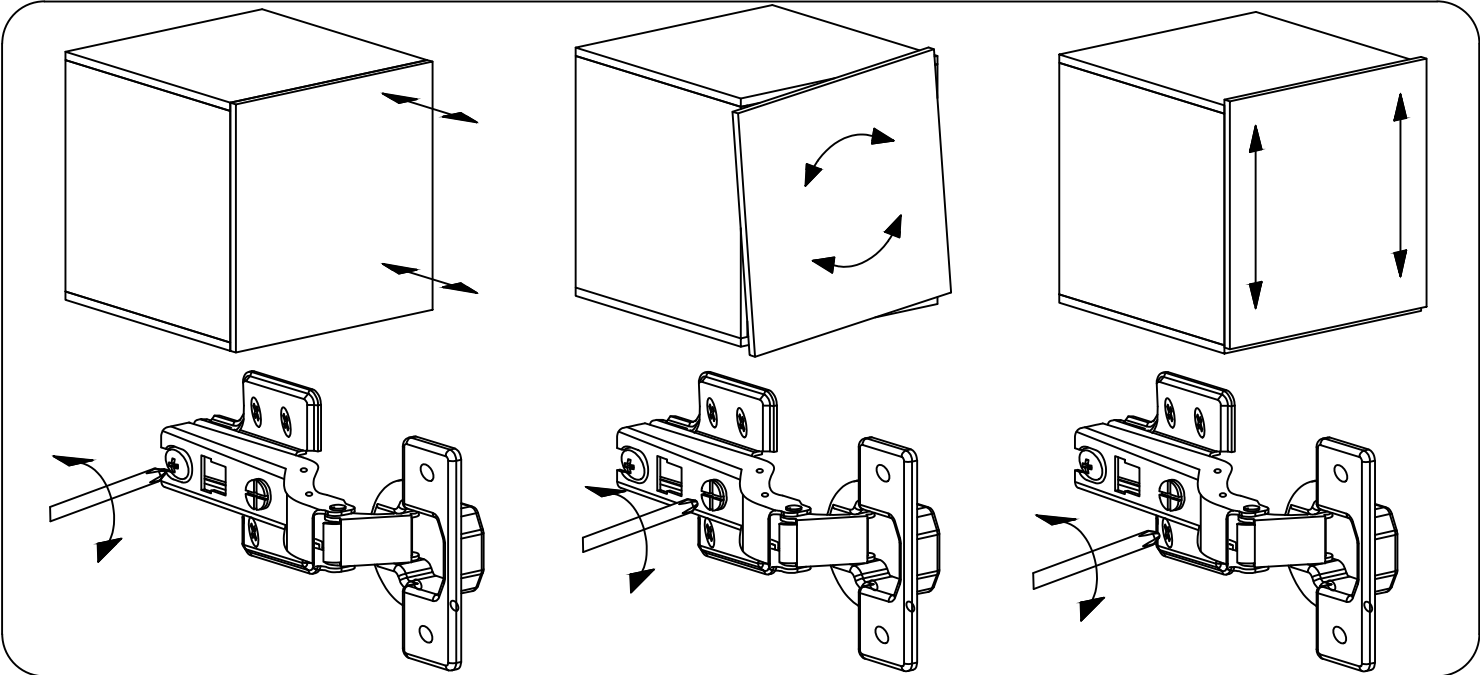
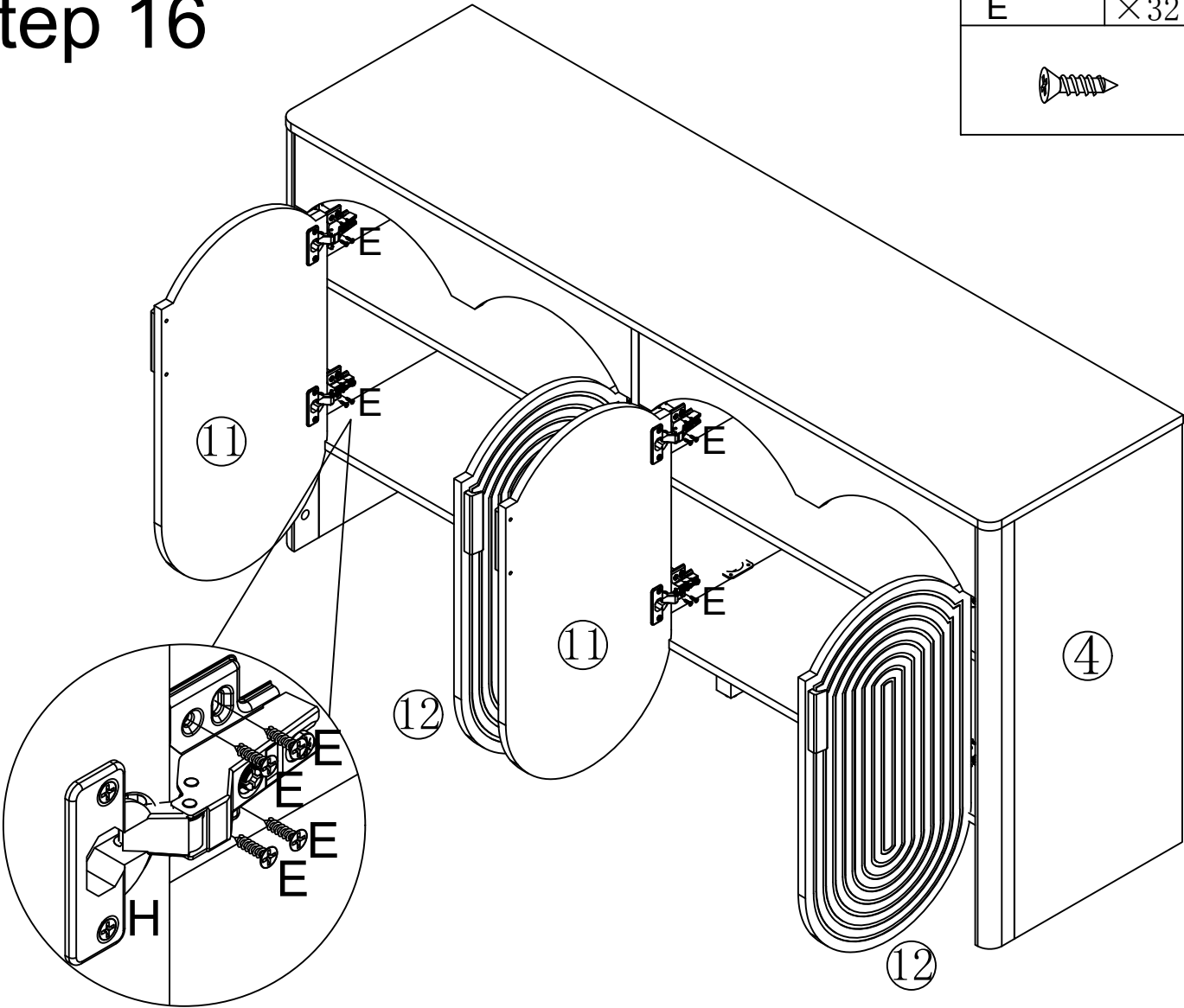
# Step 15

E	×16	H	×8	I	×8	M	×4
							

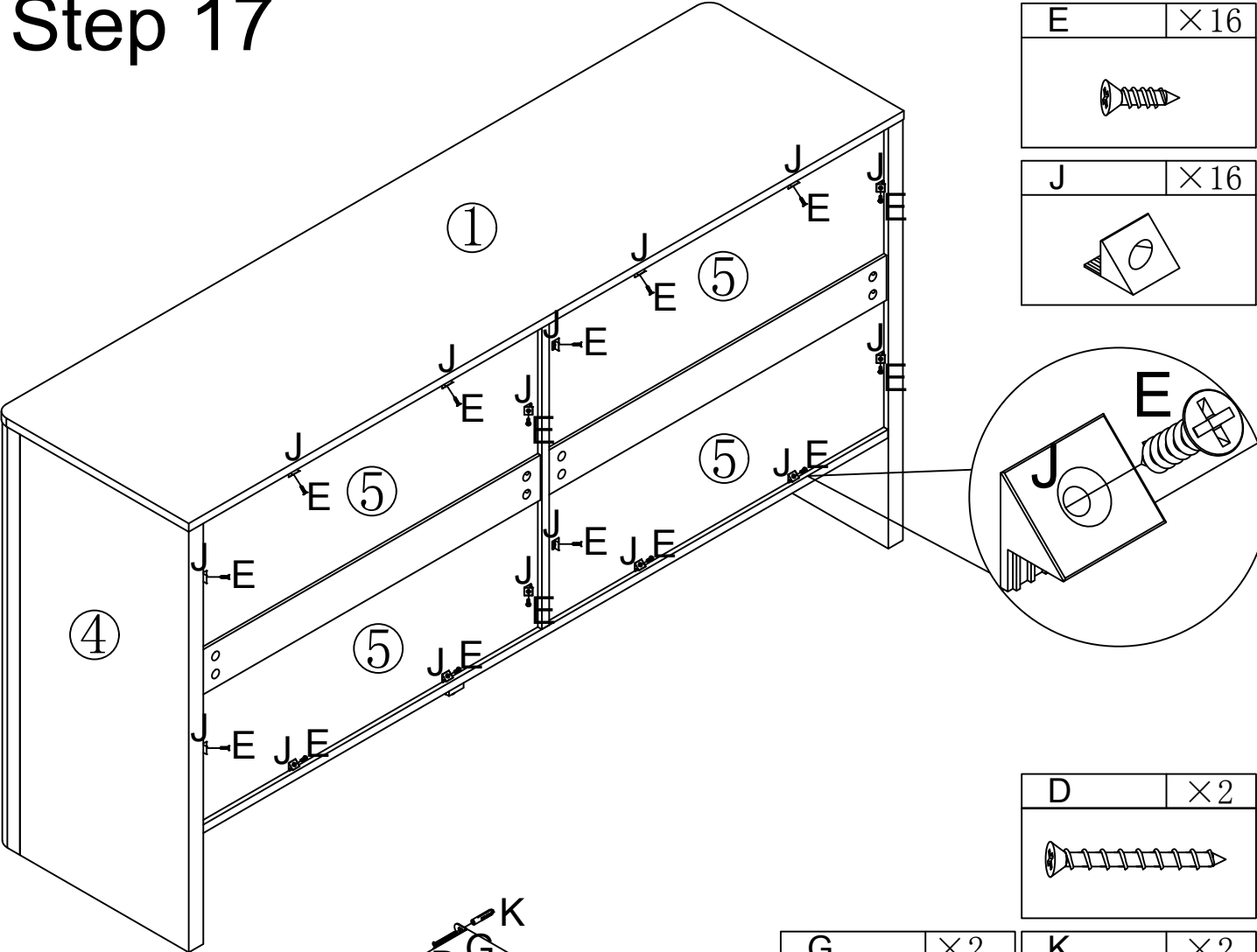


# Step 16

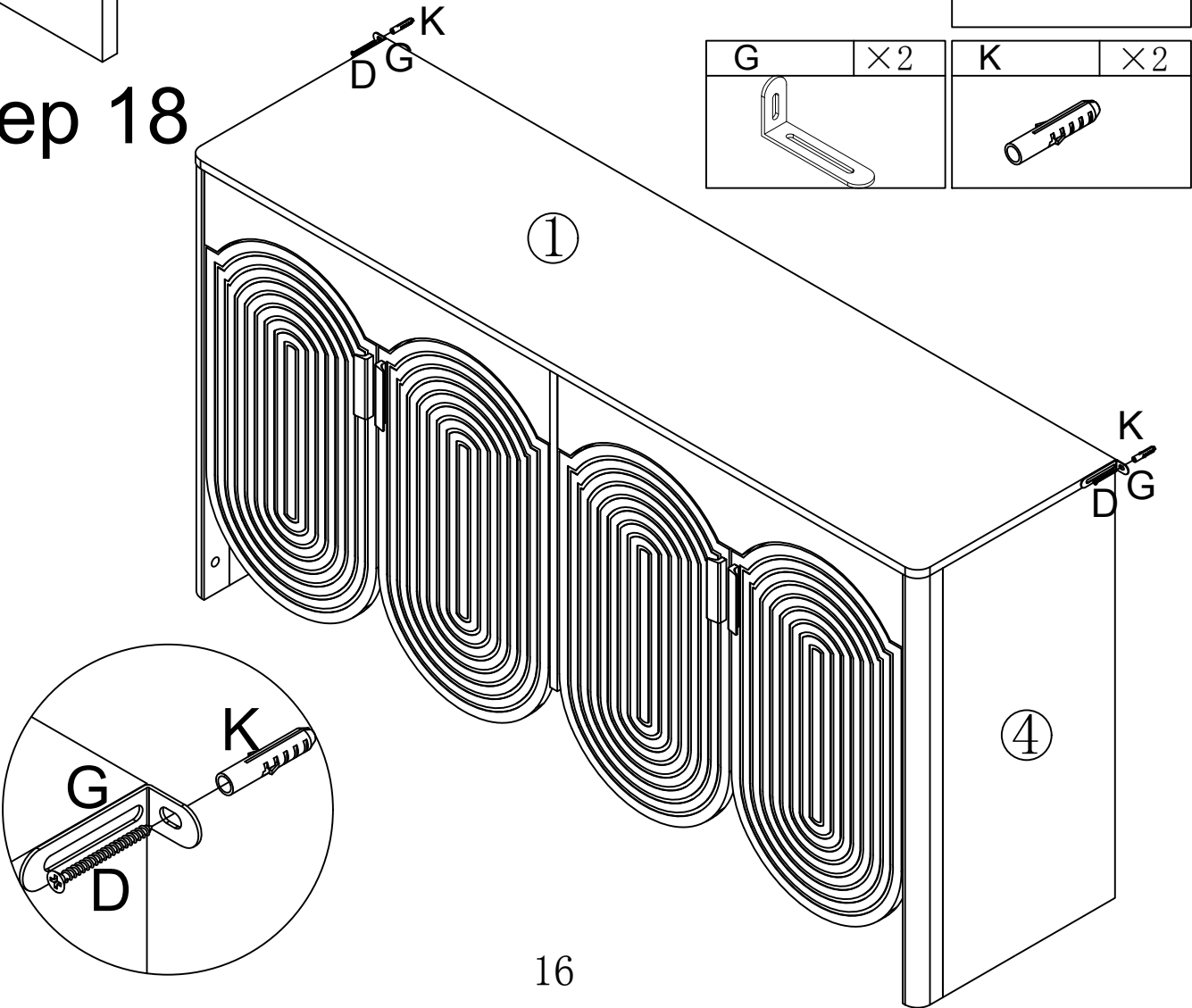
E	×32
	



# Step 17




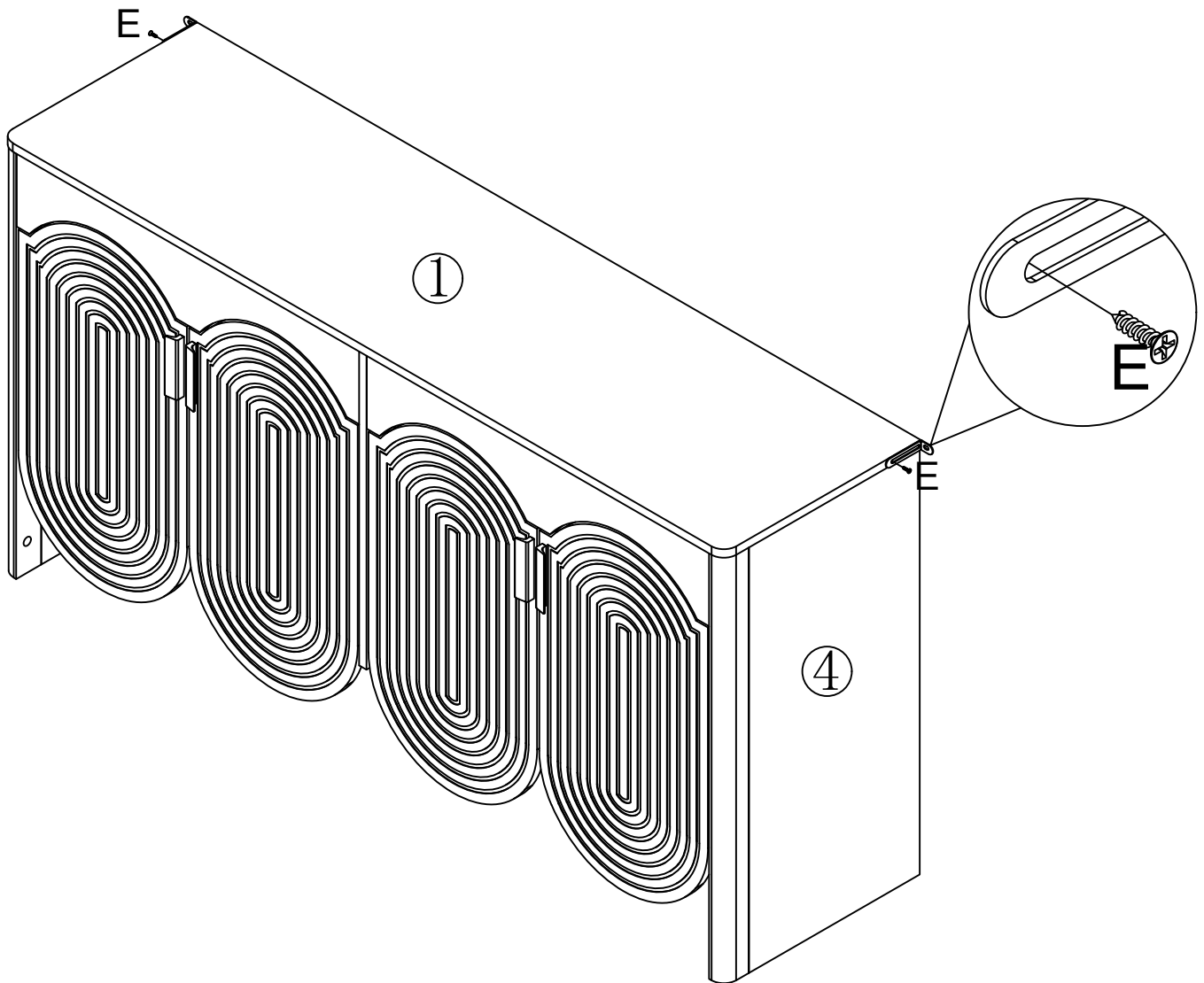
# Step 18



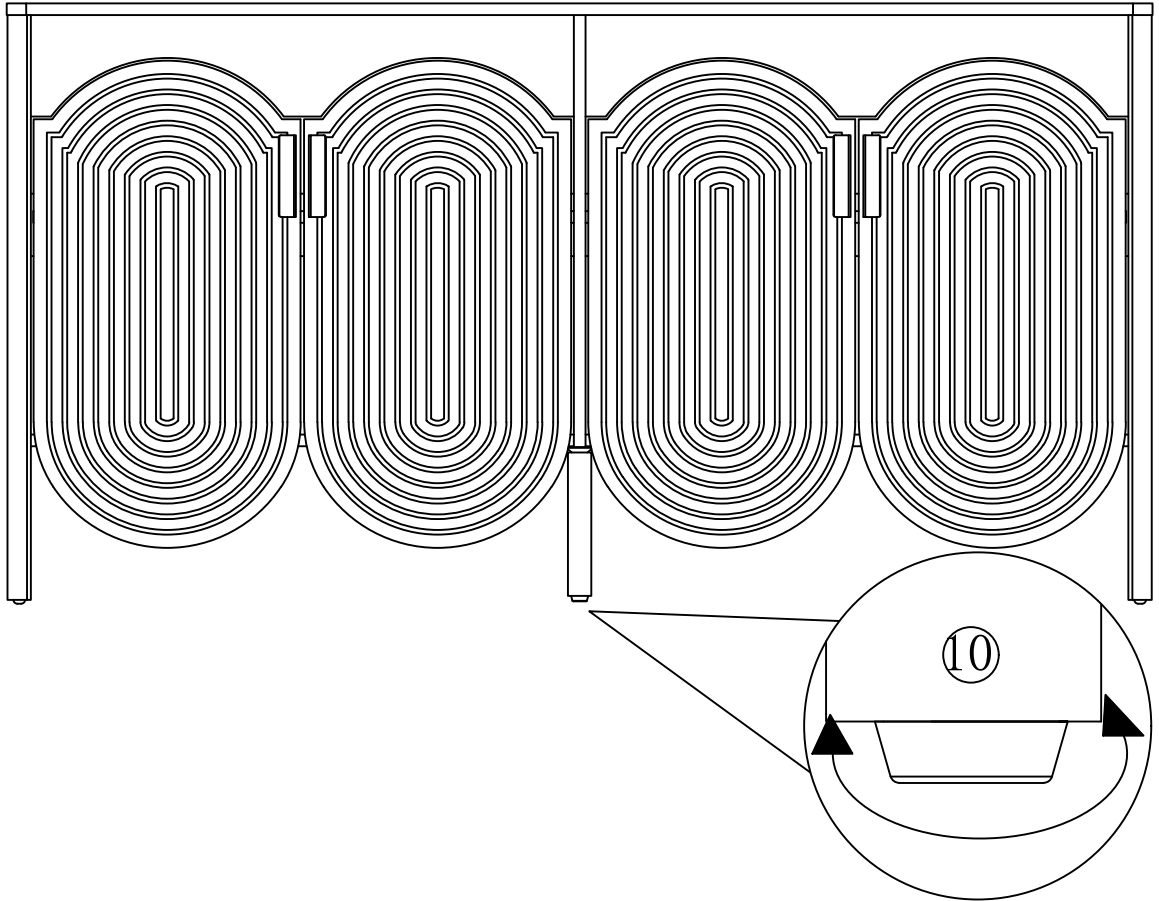


# Step 19

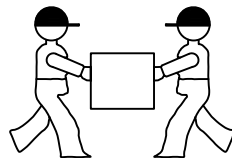
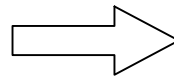
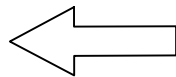
E	×2
	



# Step 20



If the center position of the cabinet is too high or too low due to uneven bottom plates or other reasons, adjust the adjustable foot pads on feet ⑩ to adjust the upper and lower height



Two people work together to move the table. Make sure you lift it off the ground. Don't push and pull.