



## VESTIL MANUFACTURING COMPANY.

2999 North Wayne Street, P.O. Box 507, Angola, IN 46703

Telephone: (260) 665-7586 -or- Toll Free (800) 348-0868

Fax: (260) 665-1339

[www.vestil.com](http://www.vestil.com) e-mail: [sales@vestil.com](mailto:sales@vestil.com)

# OPERATION & SERVICE MANUAL MANUAL HAND PUMP STACKER

## MODEL: VHPS-2000-AA & VHPS-2000-FF



### Receiving instructions:

After delivery, IMMEDIATELY remove the packaging from the product in a manner that preserves the packaging and maintains the orientation of the product in the packaging; then inspect the product closely to determine whether it sustained damage during transport. **If damage is discovered during the inspection, immediately record a complete description of the damage on the bill of lading.** If the product is undamaged, discard the packaging.

### NOTES:

1) Compliance with laws, regulations, codes, and non-voluntary standards enforced in the location where the product is *used* is exclusively the responsibility of the owner/end-user.

2) VESTIL **not liable** for any injury or property damage that occurs as a consequence of failing to apply either: a) the instructions in this manual; or b) information provided on labels affixed to the product. Neither is Vestil responsible for *any* consequential damages sustained as a result of failing to exercise sound judgment while assembling, installing, using or maintaining this product.

## TABLE OF CONTENTS

<b>Hazard identification: Explanation of Signal words</b> .....	3
<b>Safety Guide Lines</b> .....	3
<b>General</b> .....	4
<b>Declaration of Conformity</b> .....	4
<small>Copyright 2025 Vestil Manufacturing Corp.</small>	
<b>Specification</b> .....	5
<b>Safety Notes</b> .....	6
Safety instructions .....	6
Symbols and pictograms used .....	7
Routines, personnel, skills .....	8
General principles .....	9
<b>Product description</b> .....	10
Designated use .....	10
<b>Operation</b> .....	11
Raising the load .....	11
Driving on sloping surfaces.....	12
Parking brake .....	13
<b>Maintenance and repair</b> .....	14-17
Parts Drawing & Parts List .....	18-22
<b>Label Placement</b> .....	23
<b>Warranty</b> .....	24

**HAZARD IDENTIFICATION: explanation of signal words**

This manual uses SIGNAL WORDS to indicate the likelihood of personal injuries, as well as the probable seriousness of those injuries, if the product is misused in the ways described. Other signal words call attention to uses of the product likely cause property damage.

The signal words used appear below along with the meaning of each word:



Identifies a hazardous situation which, if not avoided, **WILL** result in **DEATH** or **SERIOUS INJURY**. Use of this signal word is limited to the most extreme situations.



Identifies a hazardous situation which, if not avoided, **COULD** result in **DEATH** or **SERIOUS INJURY**.



Indicates a hazardous situation which, if not avoided, **COULD** result in **MINOR** or **MODERATE** injury.



Identifies practices likely to result in product/property damage, such as operation that might damage the product.

Each person who assembles, installs, uses, or maintains this product should read the entire manual **and fully understand the directions in advance**. **If after reading the manual you do not understand an instruction, ask your supervisor or employer for clarification, because failure to adhere to the directions in this manual might result in serious personal injury.**

**SAFETY GUIDELINES**

Vestil diligently strives to identify foreseeable hazards associated with the use of its products. However, material handling is inherently dangerous and no manual can address every conceivable risk. The end-user ultimately is responsible for exercising sound judgment at all times.



Electrocution might result if any part of the product contacts electrified wires. Reduce the likelihood of electrocution by applying **common sense**:

- DO NOT *contact* electrified wires with any part of this device, your body, or clothing.
- DO NOT use or store the product where contact with electrified wires is likely.
- Always inspect the usage area before using the product & implement precautions that account for conditions.



If this product is used improperly or carelessly, the operator and/or bystanders might sustain serious personal injuries or even be killed. To reduce the likelihood of injury:

• ***Failure to read and understand the entire manual before assembling, installing, using or servicing the product is a misuse of the product.***

- Read the manual to refresh your understanding of proper use and maintenance procedures.
- DO NOT attempt to resolve any problem(s) with the product unless you are both authorized to do so and *certain* that it will be safe to use afterwards.
- DO NOT modify the product in any way UNLESS you first obtain written approval from Vestil. Unauthorized modifications automatically void the Limited Warranty and might make the product unsafe to use.
- DO NOT exceed the maximum rated load (see Label 287 on product).
- Inspect the product before each use.

A. DO NOT use this product if the inspection reveals structural damage. Examples of structural damage include, but are not limited to, the following: 1) Cracked, broken or significantly deformed load-bearing members; 2) cracked welds; 3) missing or deformed safety chain/strap; 3) corrosion, severe wear, or other condition that affects the ability of the product to support weight or itself. Replace each part that fails to pass an inspection, and DO NOT use the product until it is **fully** restored to normal condition.

B. DO NOT use the product if any unusual noise or movement is observed. If a malfunction occurs, remove the unit from service and notify your supervisor & maintenance personnel about the issue.

- DO NOT use this device UNLESS all product labels (see "Label Placement Diagram") are readable and undamaged.



Proper use, maintenance, and storage are essential for this product to function properly.

- Always use this product in accordance with the instructions in this manual and consistent with any training relevant to machines, devices, etc. used in conjunction with this product.
- Keep the product clean & dry. Lubricate moving parts.
- FOR HYDRAULIC UNITS: Do not use brake fluid or jack oils in the hydraulic system. If oil is needed, use an anti-wear hydraulic oil with a viscosity grade of 150 SUS at 100°F, (ISO 32 cSt @ 40°C), or Dexron transmission fluid.
- Contact the manufacturer for MSDS information



**SPECIFICATION**

Model Number	VHPS-2000-AA	VHPS-2000-FF
Capacity	2,000 lbs	2,000 lbs
Raised Height	63"	63"
Lowered Height	2 <sup>1</sup> / <sub>8</sub> "	3 <sup>3</sup> / <sub>4</sub> "
Fork Dimensions (LxWxH)	42x4x1 <sup>1</sup> / <sub>2</sub> "	42x5.9x2 <sup>3</sup> / <sub>8</sub> "
Overall Fork Width	7 <sup>7</sup> / <sub>8</sub> -26 <sup>3</sup> / <sub>4</sub> "	27"
Ground Clearance	1"	1"
Overall Mast Height	78"	78"
Loading Center	21"	21"
Wheel Base	41-5/16"	41-5/16"
Turning Radius	45-11/16"	45-11/16"
Steering Wheel	Ø7x2"	Ø7x2"
Front Load Roller	Ø4x2.91"	Ø4x2.91"
Overall Size (LxWxH)	61 <sup>1</sup> / <sub>4</sub> x46x78"	61 <sup>1</sup> / <sub>4</sub> x27x78"
Lift Speed (# of pumps)	Loaded	87
	Unloaded	85
Down Speed	Loaded	15 secs
	Unloaded	11 secs
Aisle Width	84"	84"
Net Weight	818	720

## **Safety notes**

---

### **Safety instructions**

This chapter informs the user about residual dangers relating to the correct use of the products. It contains generally valid safety instructions which must be observed.

Safety instructions relating to specific actions or situations are listed prior to the respective action and/or description of the situation in the chapter.

### **Principles**

This product complies with state-of-the-art technical standards and recognized safety regulations, but there are still dangers which may occur which must be considered.

Only operate the product in a perfect condition and observing the information contained in the operating manual.

The operator is responsible for integrating the product with as little risk as possible into his working environment. This obligation continues through every phase of the products lifespan, beginning at the planning stage. Residual dangers are to be minimized.

Only trained, competent personnel who have been instructed using the operating manual and the product are permitted to work with the truck.

The operating manual must be understood (responsibility, checking)

### **Liability or guarantee is waived if:**

- The instructions in this operating manual are not observed.
- The high-lift stacking truck is operated, cleaned or maintained incorrectly.
- Alterations to the functions are carried out without the consent of manufacturer.
- Original spare parts are not used.

The operating manual should be supplemented with instructions derived from valid national regulations governing accident prevention and the protection of the environment.

---

---

---

---

---

---

---

---

---

---

## Safety notes

### Symbols and pictograms used

In addition to the text and illustrations, this operating manual contains various symbols which should draw attention to the safety requirements.











They generally have the following appearance:

Signal wording	Explanation
<b>DANGER</b>	Warning of an imminent danger! Non-observance cause death or serious injury
<b>WARNING</b>	Warning of a possibly incoming dangerous situation. Non-observance may cause death or serious injury.
<b>CAUTION</b>	Warning of a possibly incoming dangerous situation. May also be used for warnings of major damage to property.

Other definitions:

<b>DIRECTION</b>	Marks recommendations for use and other useful information. Does not warn of dangerous situations.
<b>IMPORTANT</b>	Warns of a harmful situation. Non-observance may cause damage to material.

### Used symbols and pictograms

	Possible danger to file and limb or machine!		Do not step onto when load is raised!
	Danger of crushing!		It is forbidden to ride on the truck!
	Do not reach into running motor!		Suspension points for transport of truck!
	Wear safety shoes		Important
	Wear helmet		Suspended load warning!

## Safety notes

---

### Routines, personnel, skills

What must be done?	Who is responsible?
<ul style="list-style-type: none"> <li>- Initial operation</li> <li>- Selection and instruction of personnel</li> <li>- Allocation of authorizations</li> <li>- Instructing and controlling</li> <li>- Analysis of dangers when in operation</li> <li>- Appointing of working areas</li> <li>- Appointment and release of driving areas</li> <li>- Sign-posting dangerous points on driving area with the typical road signs and any additional signs if necessary</li> <li>- Evaluation of erroneous actions</li> <li>- Evaluation of arising faults</li> <li>- Reporting faults which have arisen</li> <li>- Reporting faults and defects of product and/or the instruction manual to the manufacturer</li> <li>- Enforcement of the availability</li> </ul>	<ul style="list-style-type: none"> <li>- Head of this responsibility area</li> </ul>
<ul style="list-style-type: none"> <li>- Operating and installation of the lifting trucks</li> <li>- Registering and reporting faults</li> <li>- Initiating maintenance and repair</li> <li>- Cleaning and care</li> <li>- Securing the machine against unauthorized use(removeing the key)</li> </ul>	<ul style="list-style-type: none"> <li>- Operator (skilled employee)</li> </ul>
<ul style="list-style-type: none"> <li>- Operating the lift trucks</li> <li>- Reporting faults</li> <li>- Initiating maintenance and repairs</li> <li>- Cleaning and care</li> <li>- Securing the machine against unauthorized use(remove the key)</li> </ul>	<ul style="list-style-type: none"> <li>- Operator (trained employee)</li> </ul>
<ul style="list-style-type: none"> <li>- Mechanical work</li> </ul>	<ul style="list-style-type: none"> <li>- Mechanic (skilled employee)</li> </ul>
<ul style="list-style-type: none"> <li>- Electrical work</li> </ul>	<ul style="list-style-type: none"> <li>- Electrician (skilled employee)</li> </ul>
<ul style="list-style-type: none"> <li>- Battery maintenance</li> </ul>	<ul style="list-style-type: none"> <li>- Skilled employee</li> </ul>
<ul style="list-style-type: none"> <li>- Annual inspection of the lifting truck</li> </ul>	<ul style="list-style-type: none"> <li>- Service staff (expert)</li> </ul>
<ul style="list-style-type: none"> <li>- Transport</li> </ul>	<ul style="list-style-type: none"> <li>- Appropriate expert</li> </ul>
<ul style="list-style-type: none"> <li>- Maintenance</li> <li>- Repairs</li> </ul>	<ul style="list-style-type: none"> <li>- Qualified, trained specialist personnel</li> </ul>




## Product description

---

### Designated use

- ❖ The stacker is designated for the lifting, lowering and transportation of loads according to the specifications of the identification plate.
- ❖ The stacker is to be used on level surfaces.
  - To move the stacker between buildings, warehouses etc
    - The stacker must be free from load.
    - The road surfacing must be solid and have a good grip.
- ❖ Travel routes must offer sufficient load-bearing capacity for the loaded truck.
- ❖ It is not permitted to use the stacker in areas where there is an explosive atmosphere!
- ❖ The stacker is not suitable for continuous use in cool-houses!

Ambient conditions				
Temperature	From To	14 113	° F ° F	
Degree of humidity		≤70	%	
Permitted floor incline				
• Loaded		Max. 0.5	%	
• Unloaded <sup>1</sup>		Max. 2.0	%	
<b>Dimensions and weights</b>				
Mass (dead weight)	m	1058/1654	lbs	

1) When travelling between different buildings, etc.



### WARNING!

The user is responsible for determining the actual load bearing capacity of a high-lift stacking truck. This can depend on the user, the condition of both the floor and the high-lift stacking truck and the regularity of the maintenance intervals.

## Operation

---

### Raising the load



#### CAUTION!

- Before lifting the load to be transported, ensure that the load does not exceed the lifting capacity of the truck.
- The nominal lifting capacity and lifting heights can be viewed in the load chart on side of the cahnnel.
- Ensure that the load is lifted up in a compact and stable manner. Slipping or falling of the load must be avoided.
- The load must not project into the lifting frame. Load must be evenly distributed when lifting the forks.
- The load must not hang more than 2" over the end of the lifting forks.



### Moving the load



#### CAUTION!

- Raise the load only slightly to transport
- For safety reasons (view) transport only in a forward direction
- Only when raising or setting down the load, movement of the stacker should be avoided.
- Make sure to raise or set down loads on level surfaces
- With no load, move the truck with lowered forks

### When stacker not in use

- Park the stacker on level surfaces and not in the way of any other objects
- Lower the forks completely

## Operation

---

### Driving on sloping surfaces



#### CAUTION!

- If a load to be transported on a slope, the load must be faced slope-upwards
- It is not permissible to drive on a slopes diagonally.
- The max. Slope increase which can be driven is stated in the product description.



#### CAUTION!

This manner of driving is prohibited!

## Operation

### **Parking Brake:**



**To activate the parking brake, press down on the brake pedal**



To release the parking brake, press down on the brake pedal

## Maintenance and repair



### MAINTENANCE

#### Maintenance

Maintenance interval	Fig.	Assembly/ component	Action
Before use		Complete fork lift truck	Check status, clean if necessary
		Hydraulic system • General	Check for leaks(oil under the truck) → Tighten if any of the plug is loose
Daily	1.1	Load chain	Check for mechanical damage Check for play (slack chain), see also "Maintenance and care of load chains"
Monthly	2.1	Load wheels	Check for wear
	2.2	Load carries	Check complete load carriage for cracks Inform after-sales service
6-monthly	3.1	Load chain	Check the chain and chain connection for mechanical damage Check for play(slack chain) If required, treat with chain spray, see also "Maintenance and care of load chains".
	3.2	Mast	Clean the inside of the mast profile and grease slightly
		Load carriage/ load forks	Check lateral play of the mast( in case of a dual-reach mast) and the load forks(do not completely raise the load forks)

Hydraulic Oil: Check hydraulic oil level every six months.

Do not use brake fluid or jack oil in the hydraulic system. If oil is needed, use an anti-wear hydraulic oil with a viscosity grade of 150 SUS at 100°F, (ISO 32 @ 40° C), or a non-synthetic transmission fluid.

## **Maintenance and repair**

---

### **Maintenance and care of the load chains**

In normal use the load chains should be re-lubricated every 250 operating hours; in the event of heavy soiling, moisture and very high prolonged loading, re-lubrication should be effected after 100 operating hours. If subject to corrosive media the chain should be cleaned and lubricated immediately.

### **Chain lubrication, chain conservation**

Flyer chains are correctly lubricated and are in a perfect state if:

The chain is free of exterior soiling.

When touching the chain, your finger is wetted with oil. This assures that the lubrication of the chain links is sufficient.

### **Type of lubricant**

A low-viscosity mineral – machine – or engine oil or synthetic oil should be used. The viscosity of the lubricating oil is to selected so that it remains low viscose at all ambient temperatures encountered.

Under normal temperature conditions, lubricating oils with a viscosity of SAE 20 to SAE 40 would be appropriate.

### **Lubricating methods**

The lubricant can be applied by means of brush, paint brush or also using compressed air spray devices. When using spray cans, please make sure the following basic requirement is fulfilled:

- After the thinner has vaporized, a viscosity conforming to the above-mentioned recommendation (type of lubricant) must be met.

### **Cleaning the chain**

If operation leads the chain to suffer so heavily from soiling that the penetration of the lubricating oil cannot be guaranteed, the chain must be cleaned.

This is only to be effected with paraffin derivatives such as diesel fuel, petroleum, cleaner's naphtha etc.

Do not clean with steam injectors, cold cleaners or even corrosive and acidic substances. They can directly lead to chain damage.

If the chains have to be cleaned with steam injectors, please contact our customer service.

## Maintenance and repair

---

### ◆ Temporary lay-up

**For operating reasons, if stacker is put away without use for more than two months, the following instructions are to be carried out:**

- \* Clean the stacker thoroughly.
- \* It may be necessary to support the lifting gear in a suitable manner, so as to relieve any stress on the load chains.
- \* Check the hydraulic fluid level, replenish if necessary.
- \* Grease the vehicle thoroughly.
- \* Coat all bright and moving parts with a thin film of oil and grease respectively.
- \* Store the vehicle in a dry, frost-proof, dust-free place.
- \* Do not use plastic sheeting to cover the vehicle otherwise condensation could form under it.

### **Return to service after a lay-up**

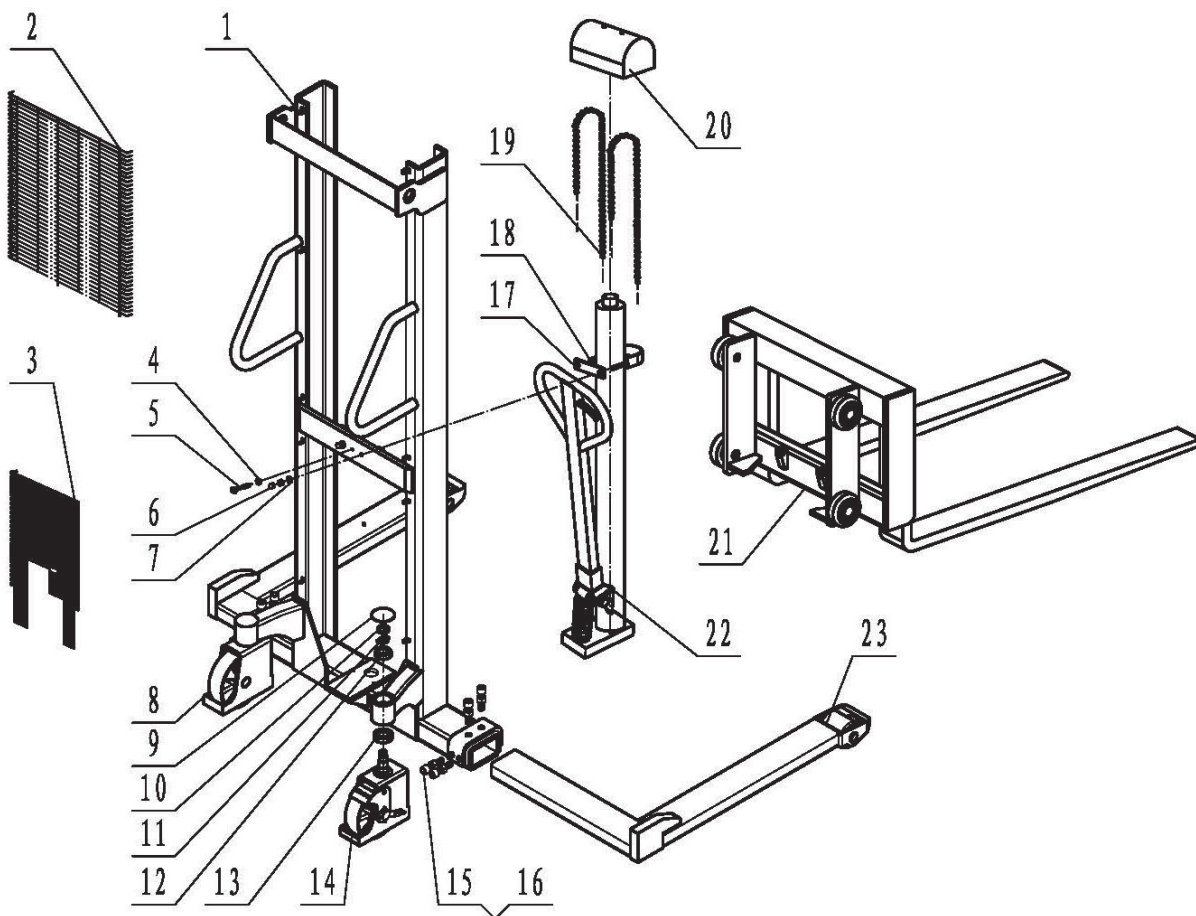
- \* Thoroughly clean and grease the stacker.
- \* Remove the film of protective grease.
- \* Check the hydraulic fluid level and hydraulic fluid for condensation, if necessary carry out a fluid change.
- \* Inspect hydraulic hose lines for brittleness.
- \* Test the functions of the stacker, particularly the safety equipment.

### **Final withdrawal from service**

If a faulty vehicle can no longer be repaired to a condition in which it can be used as specified and in accordance with existing safety regulations, it must be finally withdrawn from service.

Having been dismantled into individual components (steel, plastics, electronics, consumables, etc.) it must be disposed of in accordance with the applicable environmental regulations.

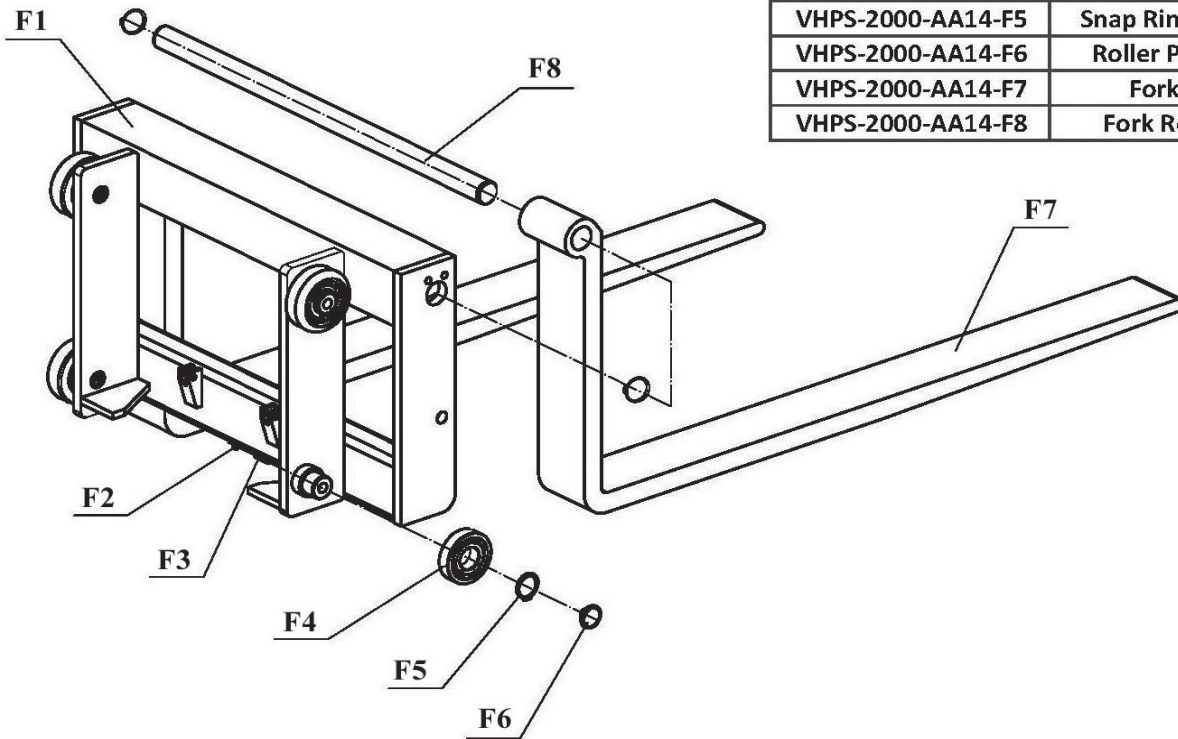
# VHPS-2000-AA (2014) Main Assembly



VHPS-2000-AA (2014) Main Assembly					
Part No.	Description	Q'ty	Part No.	Description	Q'ty
VHPS-2000-AA14-1	Frame	1	VHPS-2000-AA14-13	Bearing 30205	2
VHPS-2000-AA14-2	Upper Wire Mesh	1	VHPS-2000-AA14-14	Swivel Wheel Assembly with Brake	1
VHPS-2000-AA14-3	Lower Wire Mesh	1	VHPS-2000-AA14-15	Bolt M16 x 60	8
VHPS-2000-AA14-4	Nut M10	3	VHPS-2000-AA14-16	Nut M16	8
VHPS-2000-AA14-5	Bolt M10 x 40	1	VHPS-2000-AA14-17	U-Clamp Bracket	1
VHPS-2000-AA14-6	Cup Nut M10	2	VHPS-2000-AA14-18	U-Clamp Bolt	1
VHPS-2000-AA14-7	Spring Washer M10	2	VHPS-2000-AA14-19	Chain LH1223	2
VHPS-2000-AA14-8	Swivel Wheel Assembly	1	VHPS-2000-AA14-20	Chain Cover	1
VHPS-2000-AA14-9	Snap Ring	2	VHPS-2000-AA14-21	Fork Carriage Assembly	1
VHPS-2000-AA14-10	Nut M20 x 1.5	2	VHPS-2000-AA14-22	Pump Assembly	1
VHPS-2000-AA14-11	Nut M20 x 1.5	2	VHPS-2000-AA14-23	Leg Assembly	1
VHPS-2000-AA14-12	Bearing 6204	2			

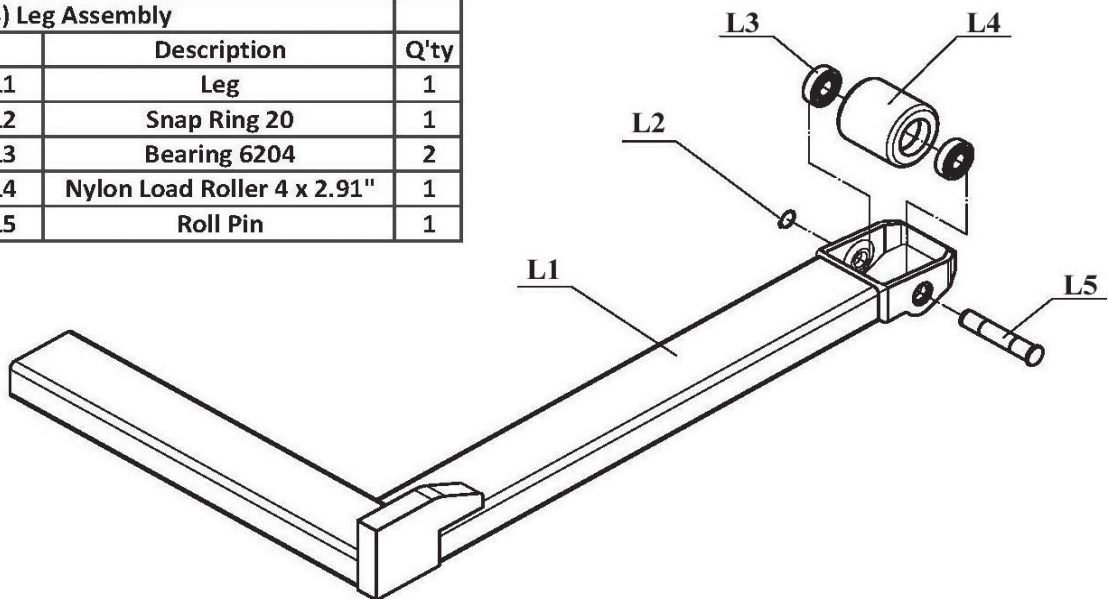
## Fork Assembly

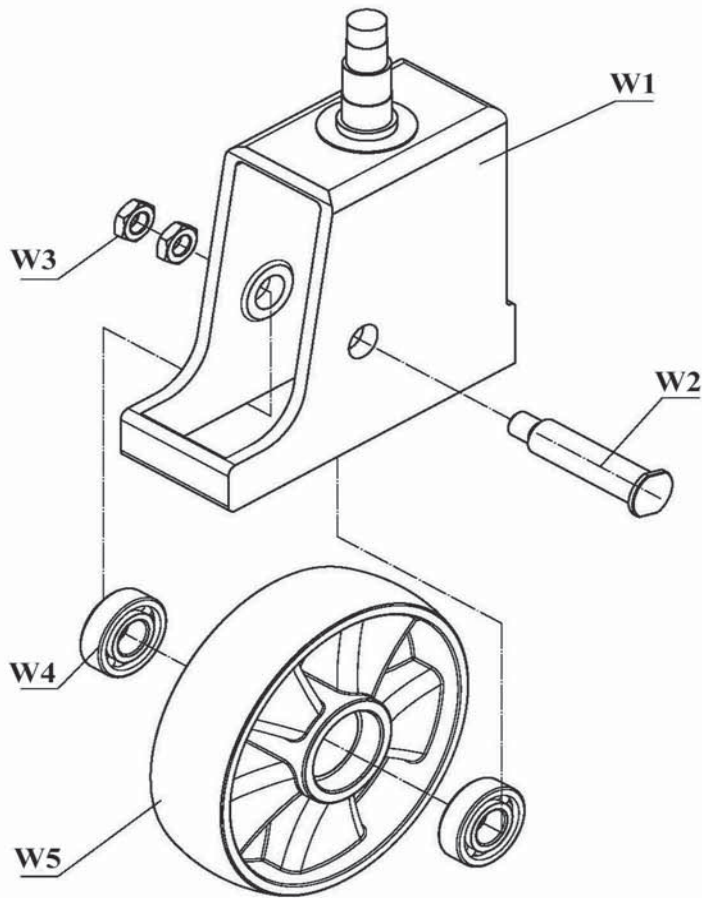
VHPS-2000-AA (2014) Fork Assembly		
Part No.	Description	Q'ty
VHPS-2000-AA14-F1	Carriage	1
VHPS-2000-AA14-F2	Nut M6	4
VHPS-2000-AA14-F3	Bolt M6 x 30	4
VHPS-2000-AA14-F4	Bearing 30307V	4
VHPS-2000-AA14-F5	Snap Ring 35	6
VHPS-2000-AA14-F6	Roller Plug	4
VHPS-2000-AA14-F7	Fork	2
VHPS-2000-AA14-F8	Fork Rod	1



## Leg Assembly

VHPS-2000-AA (2014) Leg Assembly		
Part No.	Description	Q'ty
VHPS-2000-AA14-L1	Leg	1
VHPS-2000-AA14-L2	Snap Ring 20	1
VHPS-2000-AA14-L3	Bearing 6204	2
VHPS-2000-AA14-L4	Nylon Load Roller 4 x 2.91"	1
VHPS-2000-AA14-L5	Roll Pin	1



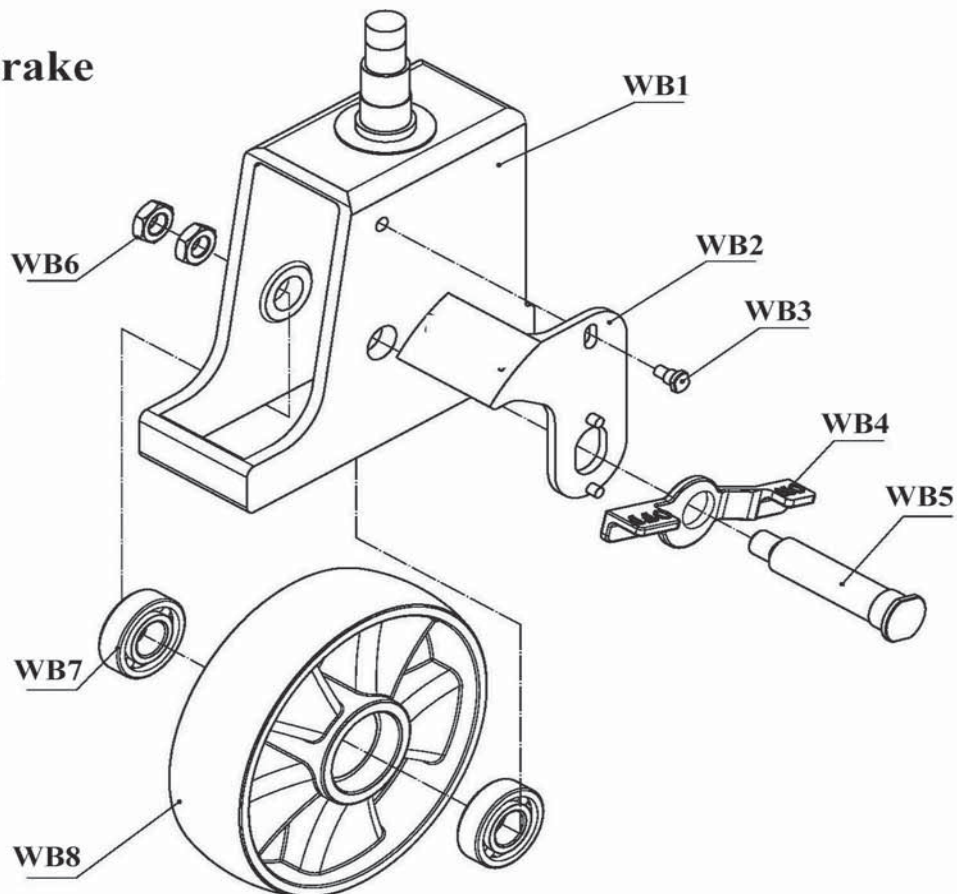


## Swivel Wheel Assembly

VHPS-2000-AA (2014) Swivel Wheel Assembly		
Part No.	Description	Q'ty
VHPS-2000-AA14-W1	Swivel Wheel Caster Rig	1
VHPS-2000-AA14-W2	Roll Pin	1
VHPS-2000-AA14-W3	Nut M14	2
VHPS-2000-AA14-W4	Bearing 6204	2
VHPS-2000-AA14-W5	Nylon 7 x 2" Wheel	1

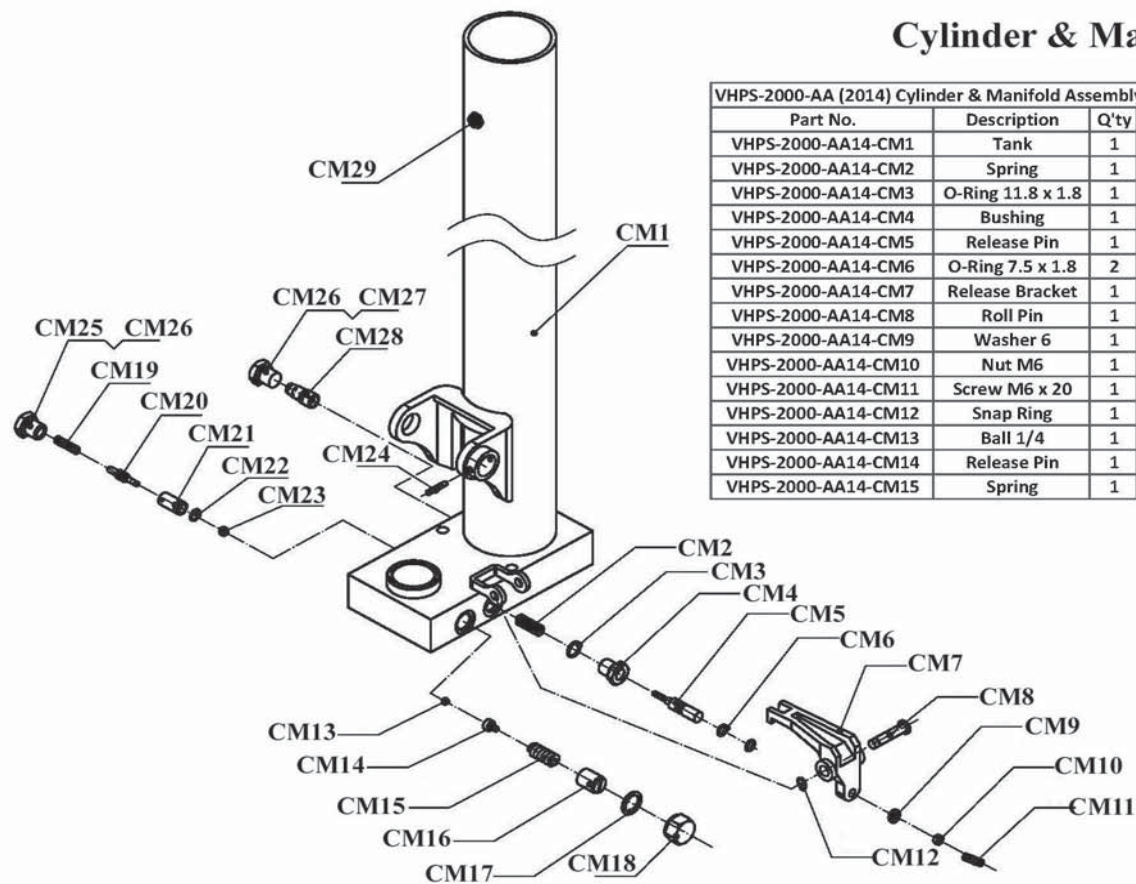
## Swivel Wheel Assembly With Brake

VHPS-2000-AA (2014) Swivel Wheel Assembly With Brake		
Part No.	Description	Q'ty
VHPS-2000-AA14-WB1	Swivel Wheel Caster Rig	1
VHPS-2000-AA14-WB2	Brake	1
VHPS-2000-AA14-WB3	Pin	1
VHPS-2000-AA14-WB4	Brake Lever	1
VHPS-2000-AA14-WB5	Roll Pin	1
VHPS-2000-AA14-WB6	Nut M14	2
VHPS-2000-AA14-WB7	Bearing 6204	2
VHPS-2000-AA14-WB8	Nylon 7 x 2" Wheel	1



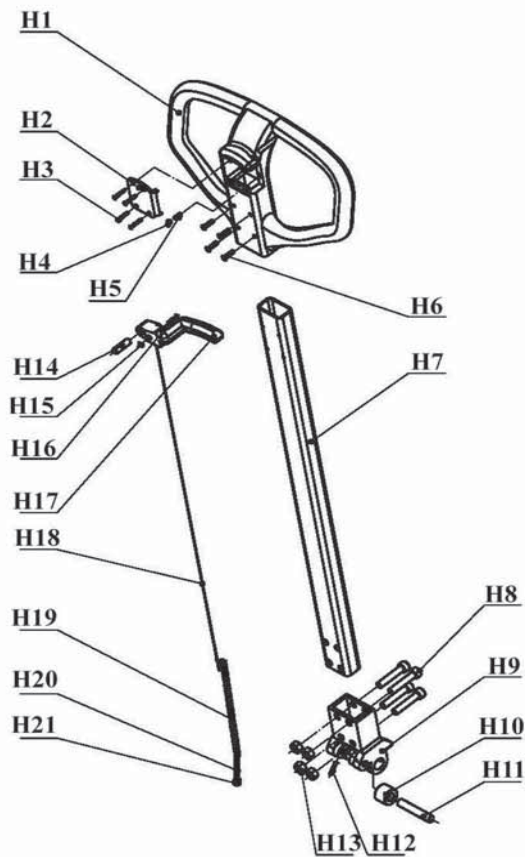
### Cylinder & Manifold Assembly

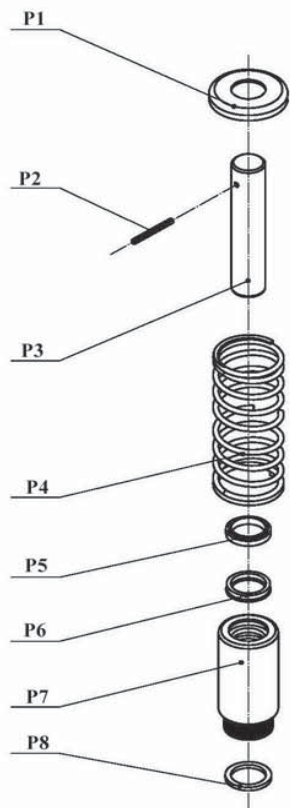
VHPS-2000-AA (2014) Cylinder & Manifold Assembly					
Part No.	Description	Q'ty	Part No.	Description	Q'ty
VHPS-2000-AA14-CM1	Tank	1	VHPS-2000-AA14-CM16	Screw	1
VHPS-2000-AA14-CM2	Spring	1	VHPS-2000-AA14-CM17	Washer	1
VHPS-2000-AA14-CM3	O-Ring 11.8 x 1.8	1	VHPS-2000-AA14-CM18	Nut	1
VHPS-2000-AA14-CM4	Bushing	1	VHPS-2000-AA14-CM19	Spring	1
VHPS-2000-AA14-CM5	Release Pin	1	VHPS-2000-AA14-CM20	Release Pin	1
VHPS-2000-AA14-CM6	O-Ring 7.5 x 1.8	2	VHPS-2000-AA14-CM21	Housing	1
VHPS-2000-AA14-CM7	Release Bracket	1	VHPS-2000-AA14-CM22	O-Ring 9 x 1.8	1
VHPS-2000-AA14-CM8	Roll Pin	1	VHPS-2000-AA14-CM23	Ball 5/16	1
VHPS-2000-AA14-CM9	Washer 6	1	VHPS-2000-AA14-CM24	Roll Pin	1
VHPS-2000-AA14-CM10	Nut M6	1	VHPS-2000-AA14-CM25	Plug	1
VHPS-2000-AA14-CM11	Screw M6 x 20	1	VHPS-2000-AA14-CM26	O-Ring 14 x 1.8	2
VHPS-2000-AA14-CM12	Snap Ring	1	VHPS-2000-AA14-CM27	Plug	1
VHPS-2000-AA14-CM13	Ball 1/4	1	VHPS-2000-AA14-CM28	Flow control Valve	1
VHPS-2000-AA14-CM14	Release Pin	1	VHPS-2000-AA14-CM29	Plug	1
VHPS-2000-AA14-CM15	Spring	1			



### Handle Assembly

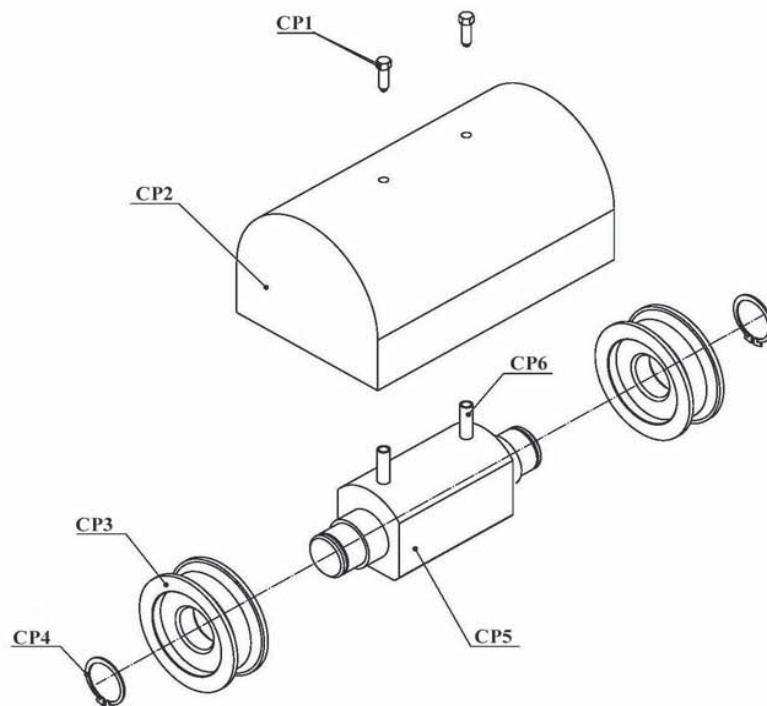
VHPS-2000-AA (2014) Handle Assembly					
Part No.	Description	Q'ty	Part No.	Description	Q'ty
VHPS-2000-AA14-H1	Handle	1	VHPS-2000-AA14-H12	Roll Pin	1
VHPS-2000-AA14-H2	Cover	1	VHPS-2000-AA14-H13	Nut	4
VHPS-2000-AA14-H3	Screw	4	VHPS-2000-AA14-H14	Shaft	1
VHPS-2000-AA14-H4	Ball	1	VHPS-2000-AA14-H15	Nut	1
VHPS-2000-AA14-H5	Spring	1	VHPS-2000-AA14-H16	Screw	1
VHPS-2000-AA14-H6	Screw	4	VHPS-2000-AA14-H17	Release Handle	1
VHPS-2000-AA14-H7	Handle Tube	1	VHPS-2000-AA14-H18	Steel Wire	1
VHPS-2000-AA14-H8	Screw	1	VHPS-2000-AA14-H19	Chain	1
VHPS-2000-AA14-H9	Bracket	1	VHPS-2000-AA14-H20	Pull Rod	1
VHPS-2000-AA14-H10	Wheel	1	VHPS-2000-AA14-H21	Nut	1
VHPS-2000-AA14-H11	Roll Pin	1			





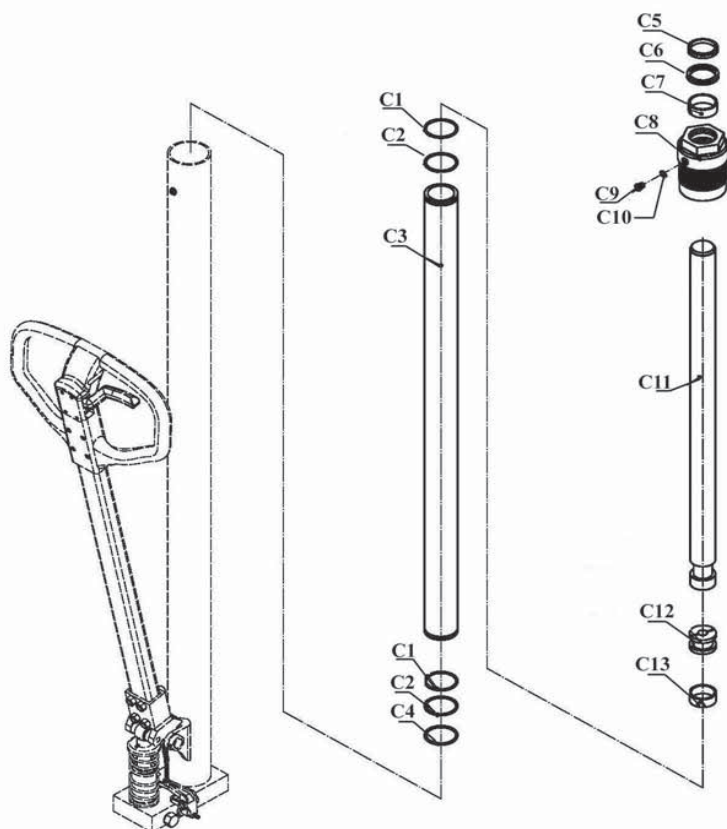
### Pump Assembly

VHPS-2000-AA (2014) Pump Assembly		
Part No.	Description	Q'ty
VHPS-2000-AA14-P1	Washer	1
VHPS-2000-AA14-P2	Roll Pin	1
VHPS-2000-AA14-P3	Pump Piston	1
VHPS-2000-AA14-P4	Spring	1
VHPS-2000-AA14-P5	Wiper Seal	1
VHPS-2000-AA14-P6	Seal	1
VHPS-2000-AA14-P7	Housing	1
VHPS-2000-AA14-P8	Wahser	1



### Chain Pulley Guard Assembly

VHPS-2000-AA (2014) Chain Pulley Guard Assembly		
Part No.	Description	Q'ty
VHPS-2000-AA14-CP1	Chain Cover Screw	2
VHPS-2000-AA14-CP2	Chain Cover	1
VHPS-2000-AA14-CP3	Chain Wheel 780306V	2
VHPS-2000-AA14-CP4	Snap Ring 30	2
VHPS-2000-AA14-CP5	Chain Wheel Seat	1
VHPS-2000-AA14-CP6	Spacer	2



### Cylinder Assembly

VHPS-2000-AA (2014) Cylinder Assembly		
Part No.	Description	Q'ty
VHPS-2000-AA14-C1	O-Ring 45 x 2.65	1
VHPS-2000-AA14-C2	Ring 45	1
VHPS-2000-AA14-C3	Lifting Rod Housing	1
VHPS-2000-AA14-C4	Ring	1
VHPS-2000-AA14-C5	Wiper Seal	1
VHPS-2000-AA14-C6	U-Cups Seal	1
VHPS-2000-AA14-C7	PTFE Ring	1
VHPS-2000-AA14-C8	Guide Bushing	1
VHPS-2000-AA14-C9	Plug	1
VHPS-2000-AA14-C10	O-Ring 6.3 x 1.8	1
VHPS-2000-AA14-C11	Lifting Rod	1
VHPS-2000-AA14-C12	Piston	2
VHPS-2000-AA14-C13	PTFE Ring	1

# VHPS-2000-AA

<b>▲ WARNING</b> KEEP CLEAR OF PINCH POINT	<b>▲ ADVERTENCIA</b> MANTENGASE ALEJADO DEL PUNTO DE CORTE	<b>▲ AVERTISSEMENT</b> SE TENIR À DISTANCE DU POINT DE PINCEMENT
--	--	--

208

**WARNING LABEL  
CHINA APPLIED**

**CE, VESTIL, & DON'T STAND ON  
OR UNDER FORKS WARNING  
LABEL**

**ALL 3 ARE CHINA APPLIED**

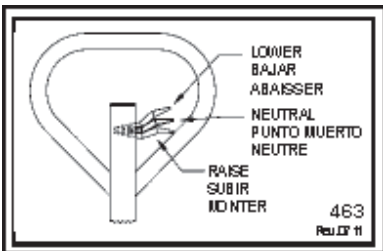
527

<b>▲ WARNING</b>
<p>Only trained, authorized persons should operate this device. Improper operation might result in serious personal injuries sustained by the truck operator and/or bystanders. Operators must observe the following safety-related practices:</p> <ul style="list-style-type: none"> <li>- <b>BEFORE</b> operating, inspect mast, carriage, forks/deck, counterbalancers, wheels, and brakes for damage. <b>DO NOT</b> use if damaged.</li> <li>- <b>ALWAYS</b> walk travel path before using truck to identify hazards.</li> <li>- <b>DO NOT</b> contact electrical lines or overhead objects with device or load.</li> <li>- <b>DO NOT</b> travel up/down inclines if an alternate route is available.</li> <li>- <b>DO NOT</b> travel over debris.</li> <li>- <b>ONLY</b> travel with forks/deck in lowest position appropriate for conditions.</li> <li>- <b>ALWAYS</b> center and evenly distribute loads on forks/deck.</li> <li>- <b>ALWAYS</b> secure load to forks/deck.</li> <li>- <b>ONLY</b> drive or operate truck functions from operator position.</li> <li>- <b>DO NOT</b> exceed maximum rated load (capacity).</li> <li>- <b>DO NOT</b> allow people to ride on device.</li> <li>- <b>DO NOT</b> lift loads over people. <b>DO NOT</b> permit people to walk beneath the forks/deck when raised (loaded or unloaded).</li> <li>- <b>DO NOT</b> leave unattended UNLESS fully lowered AND unloaded.</li> <li>- <b>DO NOT</b> modify device in any way.</li> </ul>
<b>▲ ADVERTENCIA</b>
<p>Sólo personas entrenadas y autorizadas deben operar este equipo. La operación inadecuada podría resultar en daños graves al operador del camión y/o los transeúntes. Los operadores deben observar y seguir las siguientes prácticas de seguridad:</p> <ul style="list-style-type: none"> <li>- <b>ANTES</b> de usar, inspeccione el estado de los ejes, las horquillas/plataformas, el contrapeso, las ruedas y los frenos por daños. <b>NO</b> use si se observan daños.</li> <li>- <b>SIEMPRE</b> camine el trayecto de viaje antes de usar el camión para identificar riesgos.</li> <li>- <b>NO</b> toque las líneas eléctricas u objetos altos con el dispositivo o la carga.</li> <li>- <b>NO</b> viaje en inclinaciones de subida y bajada si hay otra ruta alternativa.</li> <li>- <b>NO</b> viaje sobre escombros.</li> <li>- <b>SÓLO</b> viaje con las horquillas/plataformas en la posición de descenso más apropiada para las condiciones.</li> <li>- <b>SIEMPRE</b> centre y distribuya las cargas uniformemente en las horquillas/plataformas.</li> <li>- <b>SIEMPRE</b> opere en la posición más baja de las horquillas/plataformas.</li> <li>- <b>SÓLO</b> conduzca u opere las funciones del camión desde la posición del operador.</li> <li>- <b>NO</b> exceda la capacidad máxima (peso de carga).</li> <li>- <b>NO</b> permita que la gente viaje en el equipo.</li> <li>- <b>NO</b> levante las cargas sobre la gente. <b>NO</b> permita que la gente camine debajo de las horquillas/plataformas cuando estén elevadas (con carga o sin carga).</li> <li>- <b>NO</b> deje el equipo desatendido <b>HASTA</b> que esté completamente bajado y descargado.</li> <li>- <b>NO</b> modifique el equipo de ninguna manera.</li> </ul>

<b>▲ WARNING</b>	<b>▲ ADVERTENCIA</b>	<b>▲ AVERTISSEMENT</b>
KEEP CLEAR WHEN IN USE	MANTENGASE ALEJADO CUANDO SE ESTA OPERANDO	SE TENIR À DISTANCE LORS DU FONCTIONNEMENT

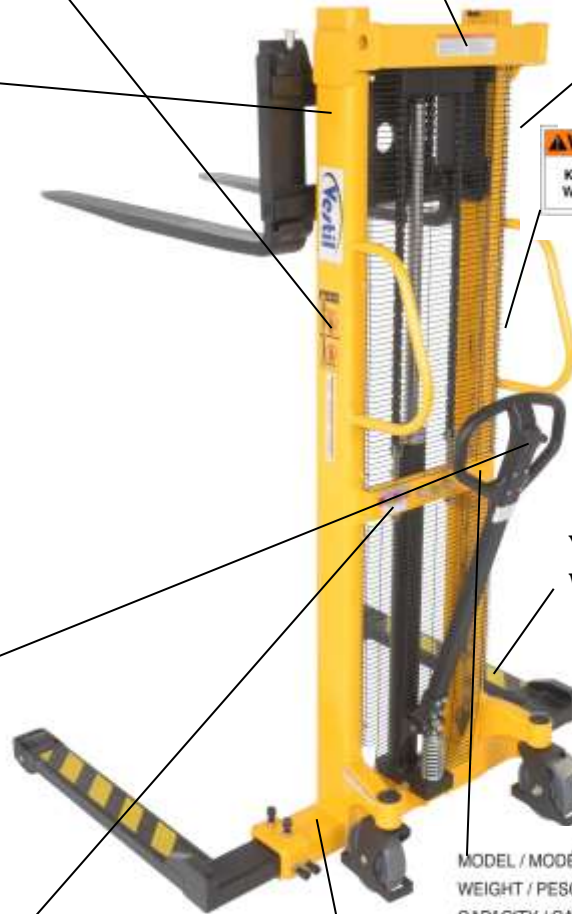
220

**YELLOW & BLACK  
WARNING TAPE YB-382-R**



463

**CHINA APPLIED ID TAG**



MODEL / MODÉLO / MODÈLE \_\_\_\_\_  
 WEIGHT / PESO / MASS \_\_\_\_\_  
 CAPACITY / CAPACIDAD / CAPACITÉ \_\_\_\_\_  
 SERIAL / SERIE / SÉRIE \_\_\_\_\_  
 UNITS: 2.2 lb. = 1kg      1" (or 1in.) = 25.4mm

1153

<b>▲ WARNING</b>	<b>▲ ADVERTENCIA</b>	<b>▲ AVERTISSEMENT</b>
Immobilize by applying all caster brakes and/or floor locks when in use, loading, and unloading.	Immobilice aplicando todos los frenos de las ruedas y / o bloques del piso cuando esté en uso, cargando y descargando.	Immobiliser en appliquant tous les freins des roulettes et / ou les verrous de plancher lors de l'utilisation, du chargement et du déchargement.

212, both sides

**Label 1072 is to be applied to the  
outside of individual packaging**

<b>▲ WARNING:</b> Reproductive Harm - www.P65Warnings.ca.gov.	<b>▲ ADVERTENCIA:</b> Daño Reproductivo - www.P65Warnings.ca.gov.
<b>▲ WARNING:</b> Cancer - www.P65Warnings.ca.gov.	<b>▲ ADVERTENCIA:</b> Cáncer - www.P65Warnings.ca.gov.

# MANUAL STACKER W/ ADJUSTABLE FORKS / LEGS

## **Maintenance and repair**

---

### **◆ Chain inspections**

Chains used in lift trucks should be inspected at least once a year or every three months if exposed to severe contamination or high continuous loading stress.

**Inspection notes**-we recommend that attention be paid to the following points:

1. Noise generation
2. Surface rust
3. Linkage rust
4. Stiff links
5. Distorted pins
6. Loose link pins
7. Impermissible external wear
8. Damage
9. Broken link plates
10. Broken pins
11. Contamination
12. Stretching

Even with the optimum amount of lubrication, it is impossible to prevent a chain from stretching.

**Wear extends only to that part of the chain which is led over the chain sprocket/guide sprocket. Thus, when checking for wear, only this area need be inspected.**

According to the regulations currently in force, a chain is deemed to be worn if it has stretched by 3%.

If safety issues are particularly critical or a potential hazard is dependent on a single chain, we consider it necessary to replace it if it is stretched by even 2%.

### **Measuring procedure**

To measure elongation through wear, that part of the chain which runs over the chain sprocket/guide sprocket must be positioned in the stretched area. With the aid of a measuring rod, measure a section approximately 1 meter in length.

The number of divisions in the measured area, multiplied by the chain divisions, gives the nominal measurement.

The length extending beyond this measurement represents the wear, which is limited to a maximum of 3% over the nominal length.

An elongation through wear of 3% is reached if 33 links of the chain in use measure the same length as 34 links of a new chain.

### **◆ Chain replacement**

If two chains are used as a pair on the affected machine, both should always be changed at the same time.

The installation and removal of chains should be carried out with all the care appropriate to any item of safety equipment.

Chains may only be repaired by authorized specialist personnel.

We do not recommend the lengthening of safety-type lifting chains, since the inserted chain link will not have been pre-stretched.

Our product liability will be invalidated if a repaired chain is assembled from sections bearing different silver label numbers.

## LIMITED WARRANTY

Vestil Manufacturing Corporation (“Vestil”) warrants this product to be free of defects in material and workmanship during the warranty period. *Our warranty obligation is to provide a replacement for a defective original part if the part is covered by the warranty, after we receive a proper request from the warrantee (you) for warranty service.*

### Who may request service?

Only a warrantee may request service. *You are a warrantee if* you purchased the product from Vestil or from an authorized distributor AND Vestil has been fully paid.

### What is an “original part”?

An original part is a part used to make the product as shipped to the warrantee.

### What is a “proper request”?

A request for warranty service is proper if Vestil receives: 1) a photocopy of the Customer Invoice that displays the shipping date; AND 2) a written request for warranty service including your name and phone number. Send requests by any of the following methods:

<u>Mail</u>	<u>Fax</u>	<u>Email</u>
Vestil Manufacturing Corporation 2999 North Wayne Street, PO Box 507 Angola, IN 46703	(260) 665-1339 <u>Phone</u> (260) 665-7586	sales@vestil.com

In the written request, list the parts believed to be defective and include the address where replacements should be delivered.

### What is covered under the warranty?

After Vestil receives your request for warranty service, an authorized representative will contact you to determine whether your claim is covered by the warranty. Before providing warranty service, Vestil may require you to send the entire product, or just the defective part or parts, to its facility in Angola, IN. The warranty covers defects in the following *original* dynamic components: motors, hydraulic pumps, electronic controllers, switches and cylinders. It also covers defects in *original* parts that wear under normal usage conditions (“wearing parts”), such as bearings, hoses, wheels, seals, brushes, and batteries.

### How long is the warranty period?

The warranty period for original dynamic components is 1 year. For wearing parts, the warranty period is 90 days. The warranty periods begin on the date when Vestil ships the product to the warrantee. If the product was purchased from an authorized distributor, the periods begin when the distributor ships the product. Vestil may, at its sole discretion, extend the warranty periods for products shipped from authorized distributors by *up to* 30 days to account for shipping time.

### If a defective part is covered by the warranty, what will Vestil do to correct the problem?

Vestil will provide an appropriate replacement for any *covered* part. An authorized representative of Vestil will contact you to discuss your claim.

### What is not covered by the warranty?

1. Labor;
2. Freight;
3. Occurrence of any of the following, which automatically voids the warranty:
  - Product misuse;
  - Negligent operation or repair;
  - Corrosion or use in corrosive environments;
  - Inadequate or improper maintenance;
  - Damage sustained during shipping;
  - Collisions or other incidental contacts causing damage to the product;
  - Unauthorized modifications: DO NOT modify the product IN ANY WAY without first receiving written authorization from Vestil. Modification(s) might make the product unsafe to use or might cause excessive and/or abnormal wear.

### Do any other warranties apply to the product?

Vestil Manufacturing Corp. makes no other express warranties. All implied warranties are disclaimed to the extent allowed by law. Any implied warranty not disclaimed is limited in scope to the terms of this Limited Warranty.

