

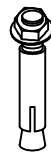
Depending on the material of the wall that will be used to support the trellis, you may need other specialized hardware for installation. Check with a hardware specialist if you need more guidance.

a.



M6x6/4pcs

b.



M6/5pcs

c.

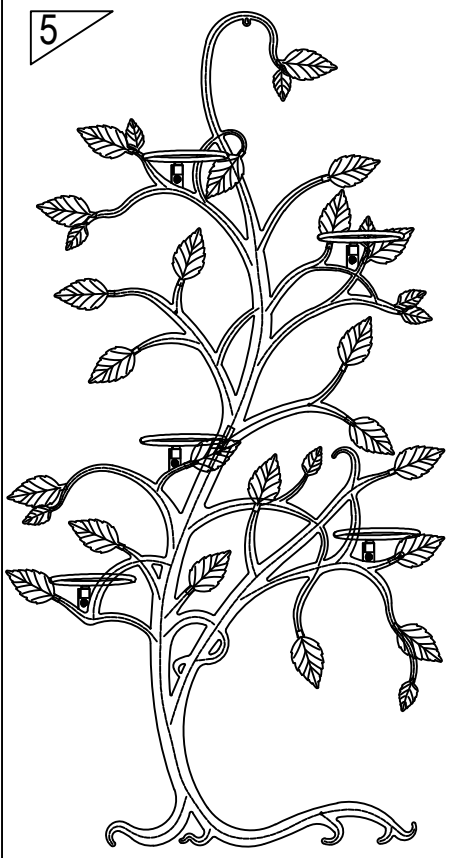
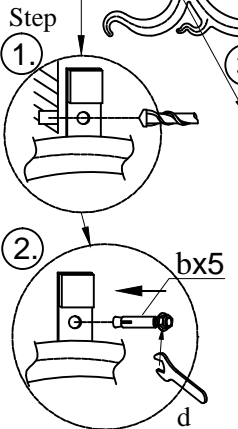
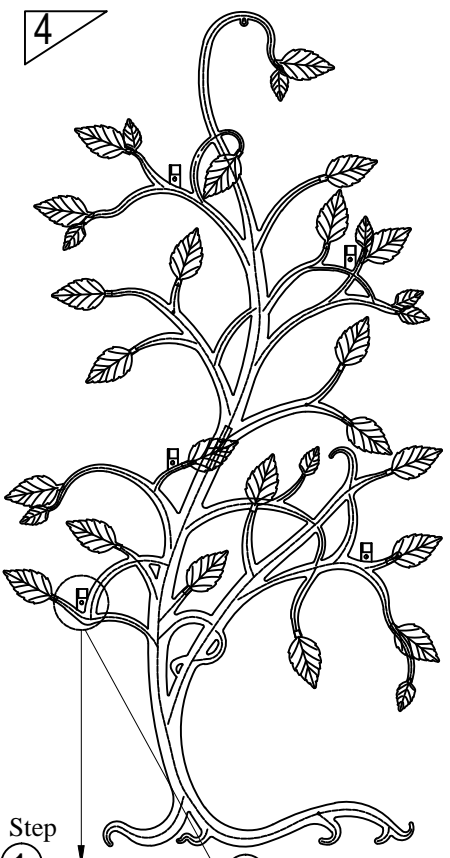
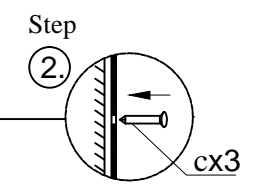
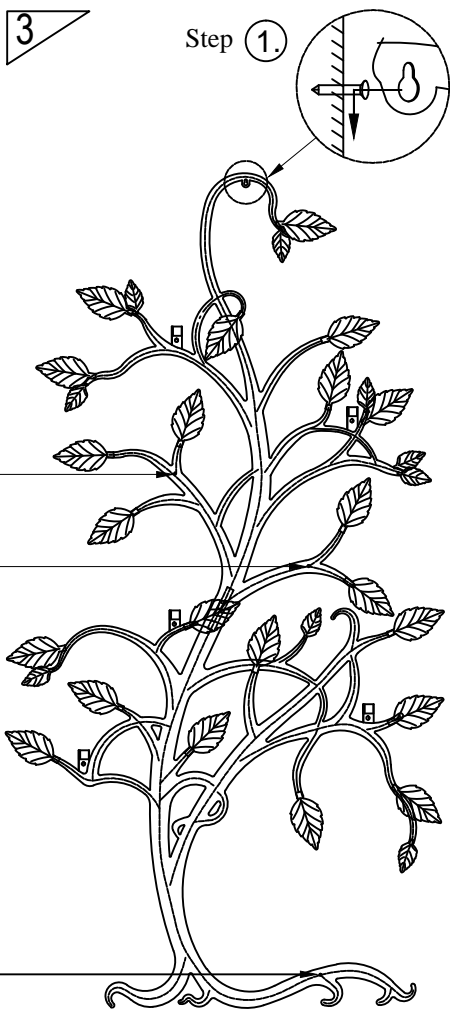
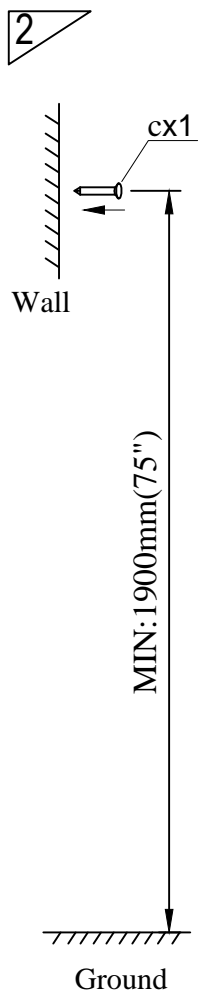
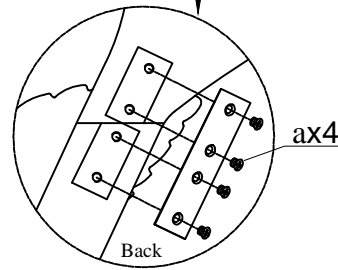
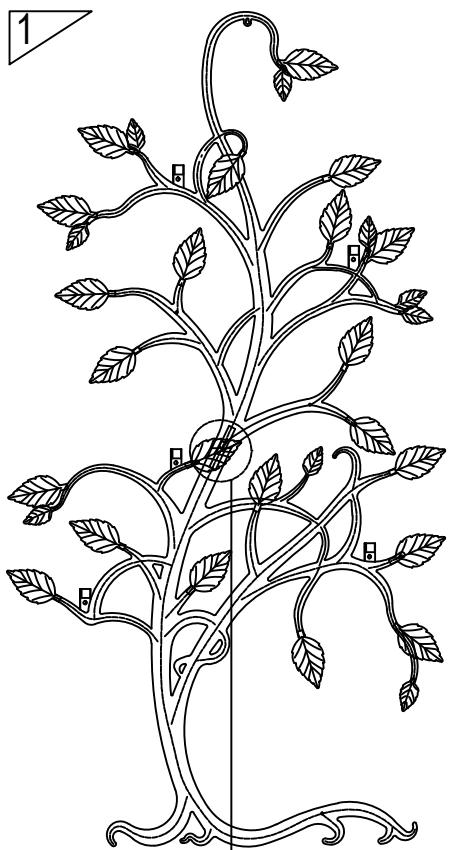


Ø4*40mm/4 PC

d.



1PC



- ① Drill Ø8mm hole on the wall.
- ② Assembly concrete nails.
- ③ Insert the pot holder.