

VIVOHOME

**THANK
YOU!**

NOTE:

To continuously improve its products, VIVOHOME reserves the right to modify this information without prior notification.

For any questions regarding assembly, please watch the video on the product page or contact our customer service. Our customer service will gladly assist you with any additional questions, comments, or concerns.

Thank you for using VIVOHOME products in your home!

Thank You for Purchasing from

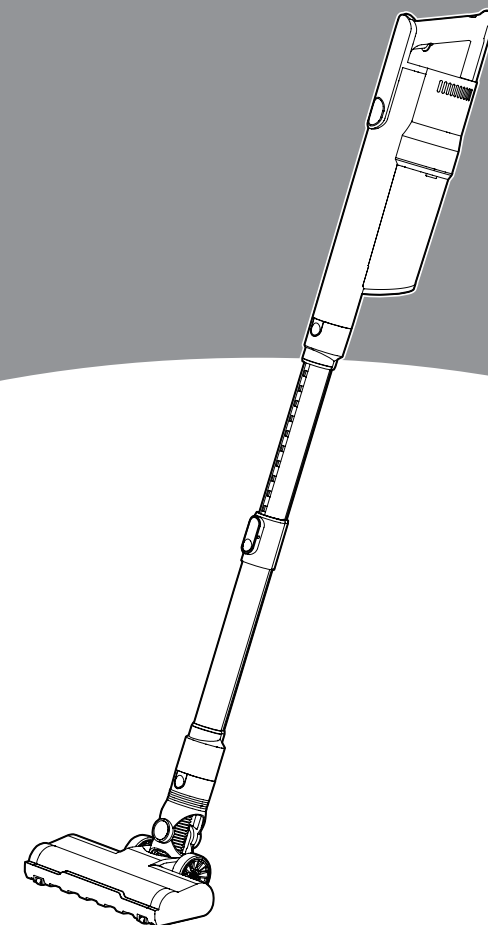
VIVOHOME

Made in China

VIVOHOME

HOW-TO

USER MANUAL



Cordless Vacuum Cleaner

Assembly is EASY!

**WE WANT
YOU TO
ENJOY LIFE
AT HOME**

GO TO THE PRODUCT LISTING PAGE
FOR AN INSTRUCTIONAL VIDEO!

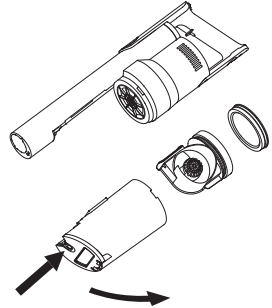
CONTENTS

Product Usage	1
Indicator Light Description	6
Fault Code Information.....	7
Packing List	8
Product Specifications.....	9
Troubleshooting	10
Daily Maintenance.....	11
Important Safety Instructions.....	12
Warning	13
Structure Overview	14
Circuit Diagram.....	15
Environmental Protection	15
Warranty	18



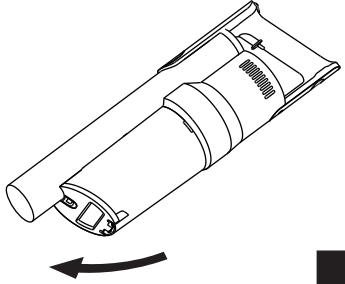
FOR UPRIGHT:

1



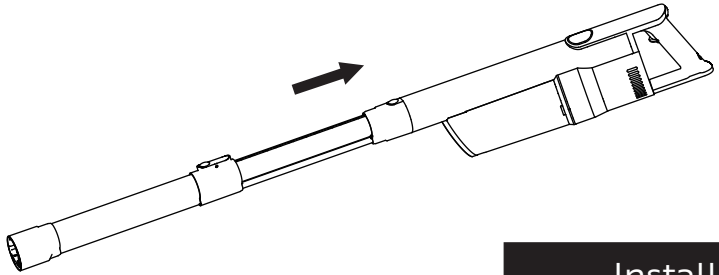
Checking filter

2



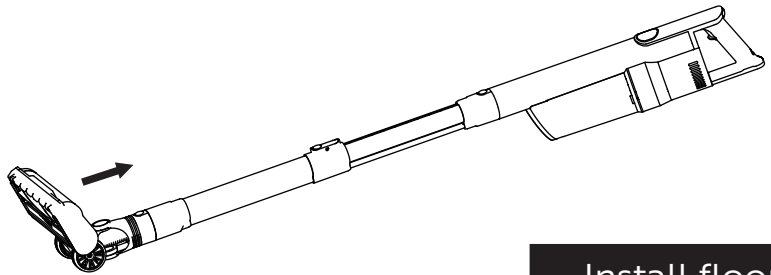
Install dust cup

3



Install tube

4

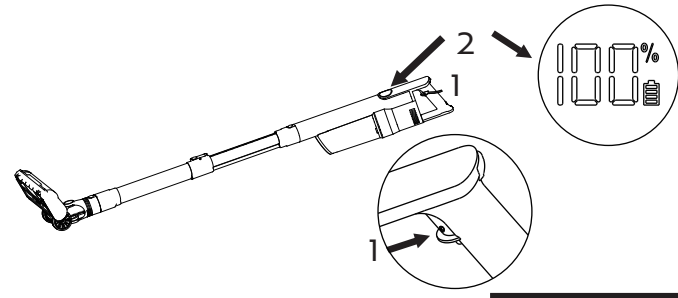


Install floor brush



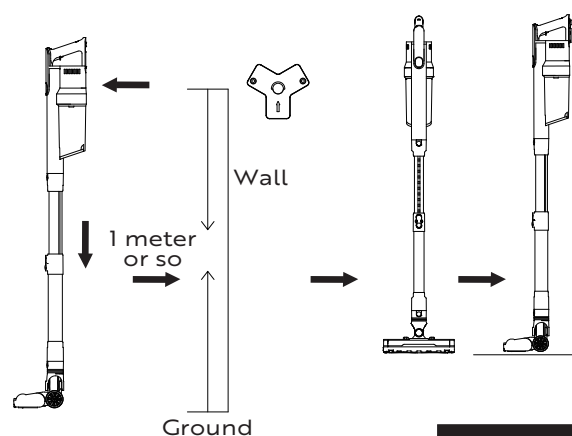
FOR UPRIGHT:

5



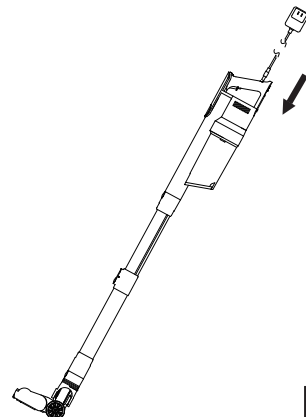
Start/stop working

6



Stop working/storage

7



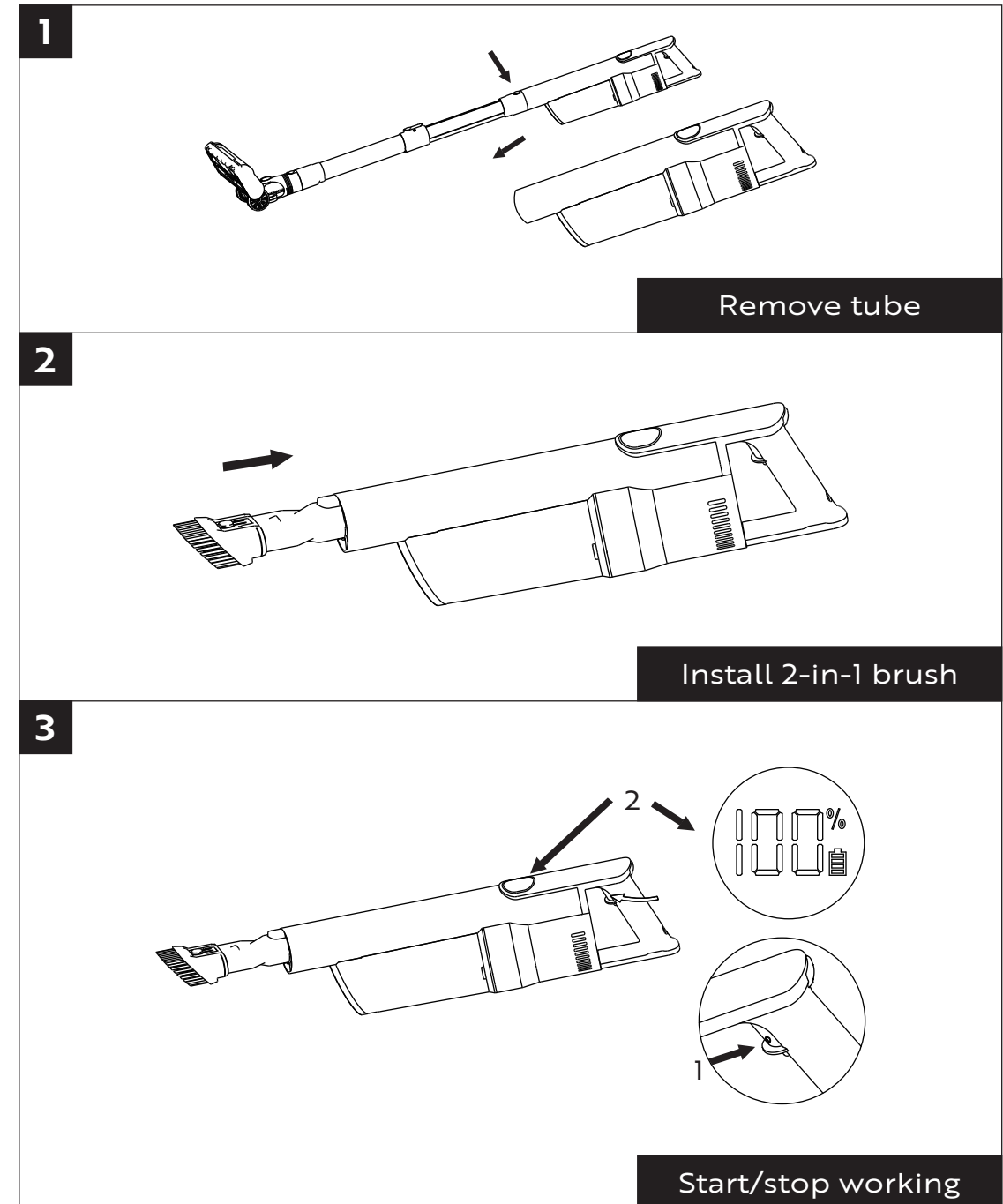
Adapter usage



1. As shown in Fig 1, before use, press and hold the dust cup release button, lift the dust cup, open the dust cup, and confirm that the dust cup is equipped with a filter.
2. As shown in Fig 2, align the dust cup with the card slot of the host, install the dust cup back, and hear a "click" sound, indicating that it is installed in place.
3. As shown in Fig 3, insert one end of the connecting pipe belt buckle into the host connector for fixation.
4. As shown in Fig 4, insert the rotating head of the floor brush assembly into the connecting pipe without snapping that end, then fix it.
5. As shown in Fig 5, long press switch button 1 to work in standard gear, then touch the key "+/-" on top of panel 2 to switch to high gear mode. When it is in high gear mode, you can press the key "+/-" on top of panel 2 to switch to standard gear again, and finally press key 1 to make the vacuum cleaner stop working.
6. As shown in Fig 6, the first step is to stop the vacuum cleaner according to fig 5. The second step is to firmly stick the hanger at a position about 1m away from the ground and close to the socket. The third step is to hang the vacuum cleaner upright close to the hanger for stable storage.
7. First, confirm that the vacuum cleaner is in the stop working state; the vacuum cleaner is vertically hung on the hanger; the adapter is inserted into the socket; and then the adapter charging port is inserted into the vacuum cleaner charging port. If the blue light flashes, it is in a charging state.

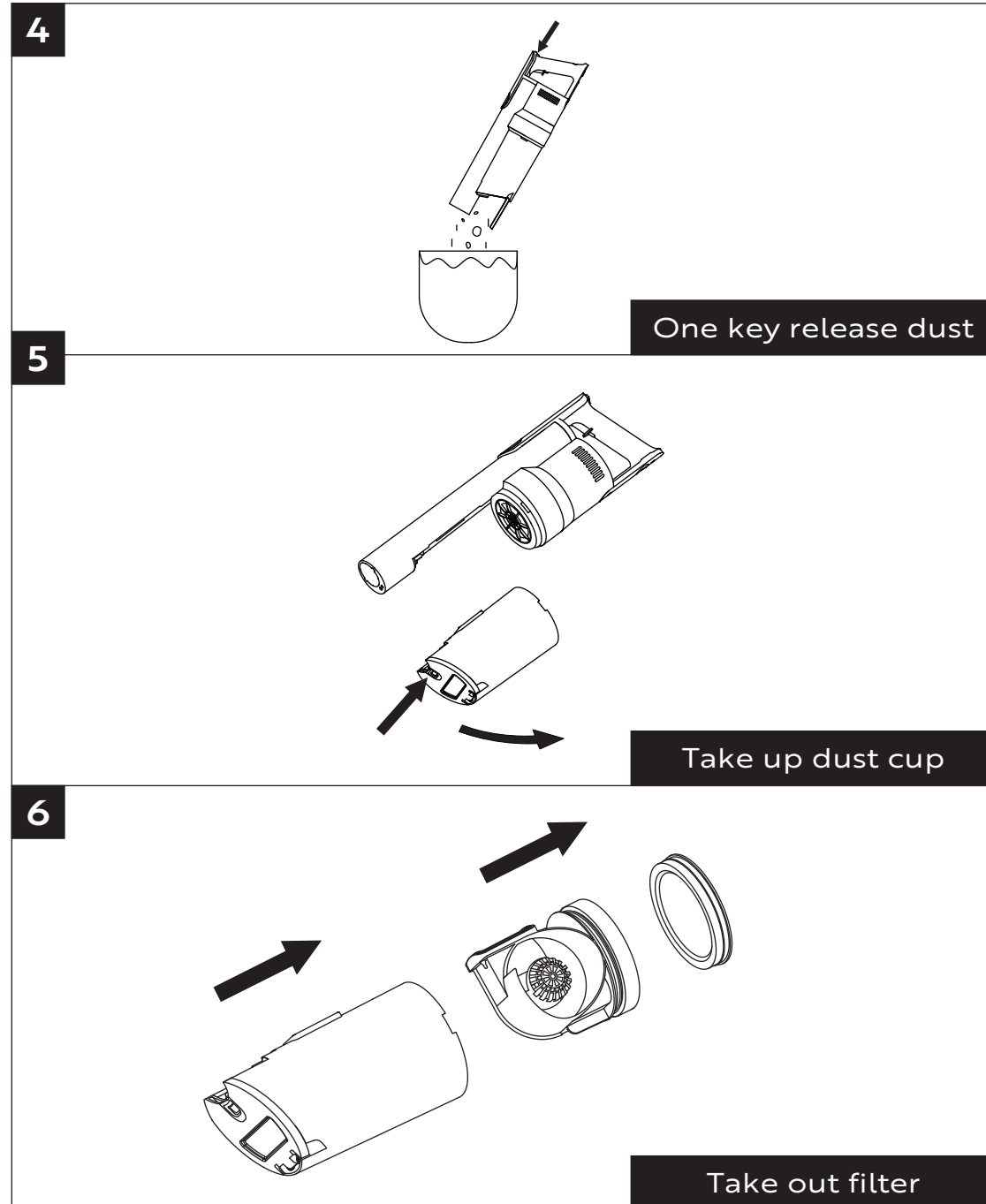


FOR HANDHELD:





FOR HANDHELD:



1. As shown in Fig 1, press and hold the release button of the connecting pipe to remove the connecting pipe.
2. As shown in Fig 2, insert the brush assembly or long flat suction into the connector of the host.
3. As shown in Fig 3, press switch button 1 to work in standrad mode, then adjust the working mode by touching the key "+/-" on top of panel 2, touching once to switch to medium mode, and touching twice to switch to max mode. And finally, press key 1 to make the vacuum cleaner stop working.
4. As shown in Fig 4, press the dust cup cover button once to pour the dust into the dust bucket.
5. As shown in Fig 5, if you press and hold the dust cup release button, lift the dust cup and remove the dust cup.
6. As shown in Fig 6, take out the filter screen and filter assembly from the dust cup for cleaning.

SECTION B
Indicator Light Description



1. When working normally, the power indicator is always on.
2. When the power is turned off, the digital screen turns off.
3. When the power is low, the power indicator flashes rapidly.
4. When charging continuously, the power indicator flashes.
5. When fully charged, the power indicator light is always on.

6. When the dust cup is clogged, the middle digit of the digital screen flashes "0", and the rest of the signs are not displayed, the vacuum cleaner works normally without stopping, replace the filter and restart the machine.
7. When the machine is faulty, the digital screen will show the corresponding fault code.

SECTION C

Fault Code Information



Code Name	Code Information
E1	Charging overvoltage protection
E2	Charge overcurrent protection
E3	Lowcurrent protection (load detection)
E4	Host/ground brush short circuit protection
E5	NTC Short circui
E6	NTC open
E7	Host overcurrent protection
E8	Battery damage/drop protection
E9	Full blockage protection of the main motor
F1	Discharge high temperature protection
F2	Discharge low temperature protection

SECTION D

Packing List



Name	Quantity
Mainframe	1
Tube	1
Electric Brush	1
2 in 1 Brush	1
Long Nozzle	1
Wall Hanger	1
Adapter	1
Manual	1
Extra Filter	1
Hair Hook	1

Warning: Only a special power adapter can be used. Ventilation and heat dissipation are required during charging. It is strictly prohibited to put it in a high-temperature environment above 50°C. It is strictly prohibited to rely on a fire source to avoid an explosion.



Product Name	Cordless Vacuum Cleaner
Model Number	VH1354
Voltage	22.2V
Power (W)	260W
Dust Cup Volume	0.8L
Suction	High/ Middle/ Low: $\geq 22\text{KPa}$, $\geq 15\text{KPa}$, $\geq 9\text{KPa}$
Noise Db	$\leq 75\text{dB}$
Battery Volume	2200mAh, 6*18650 li-ion battery
Charging Time	About 4.5h
Running Time	Max mode $\geq 12\text{min}$ / Mid mode $\geq 20\text{min}$ / Standard mode $\geq 35\text{min}$
Adapter Output	27V === 500mA
Adapter Input	100-240V ~ 50/60



Note: Before troubleshooting, cut off the power supply and pull out the power plug.

Malfunction	Treatment Methods
The suction power of this vacuum cleaner drops and makes an abnormal sound.	Stop pumping or overheating the motor.
The brush or suction is blocked.	Clean the brush or air duct.
The filter is clogged.	Wash or replace.
The vacuum motor doesn't work.	Please check whether the battery pack is firmly inserted into the battery holder.
The machine suddenly stopped working.	Turn off the power switch, charge the battery pack, clean up the trash in the dust cup, and then restart the machine.

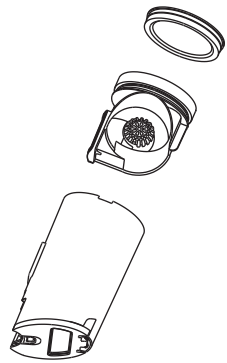
If the problem persists, please contact our special maintenance department for repair.



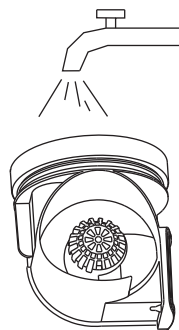
Open the dust cup and take out the filter, wash with water and dry naturally.

MATTERS NEEDING ATTENTION:

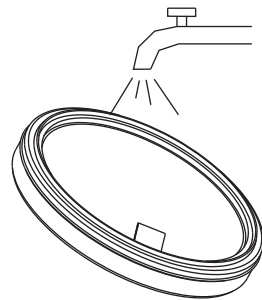
1. If the machine is frequently used nearly every day, the filter screen and dust cup should be cleaned at least 1-3 times a month, or if the sound of the machine is much louder than normal in the process of use, it is necessary to clean the dust cup.
2. A vacuum cleaner should be operated under the condition of a filter.
3. Before using it again, be sure to check whether the filter is installed or damaged.



(Fig. 1)



(Fig. 2)



(Fig. 3)



1. The vacuum cleaner is an electric appliance. It must be used in accordance with the operating conditions of the instructions. The instructions should be kept properly for future reference.
2. Check and confirm that the vacuum cleaner voltage must be consistent with the supply voltage.
3. It is strictly forbidden to inhale the following objects, otherwise it may damage the vacuum cleaner or cause fire.
 - A. Heating objects (carbon fire, etc.).
 - B. Large cuts of sharp fragments (glass, etc.).
 - C. Harmful objects or water and liquids (solvents, corrosives, etc.).
 - D. Flammable and explosive goods (gasoline or alcohol products).
4. When cleaning, repairing, or temporarily not using the vacuum cleaner, the power supply must be cut off.
5. Remember, do not immerse the main vacuum cleaner in water; avoid approaching heating equipment or exposure to the sun to avoid fire.
6. Don't let children play with vacuum cleaners to avoid accidents.
7. If there is a drop, obvious damage, or abnormal operation, please do not continue to use the vacuum cleaner and promptly send it to the maintenance department designated by our company for repair.
8. Avoid running for a long time if the suction inlet is blocked, to avoid damage to the motor and heat generation in the vacuum cleaner.
9. To avoid danger, if the adapter is damaged, you must purchase the factory-specified charging adapter.

10. When the vacuum cleaner is not used for a long time, it is recommended to charge it once every three months. Before the product is scrapped, the battery must be taken out and safely recycled. Do not discard it.
11. When there are hairs left on the floor brush and mite removal brush, use the hook cutter to cut the hairs.

SECTION I
Warning



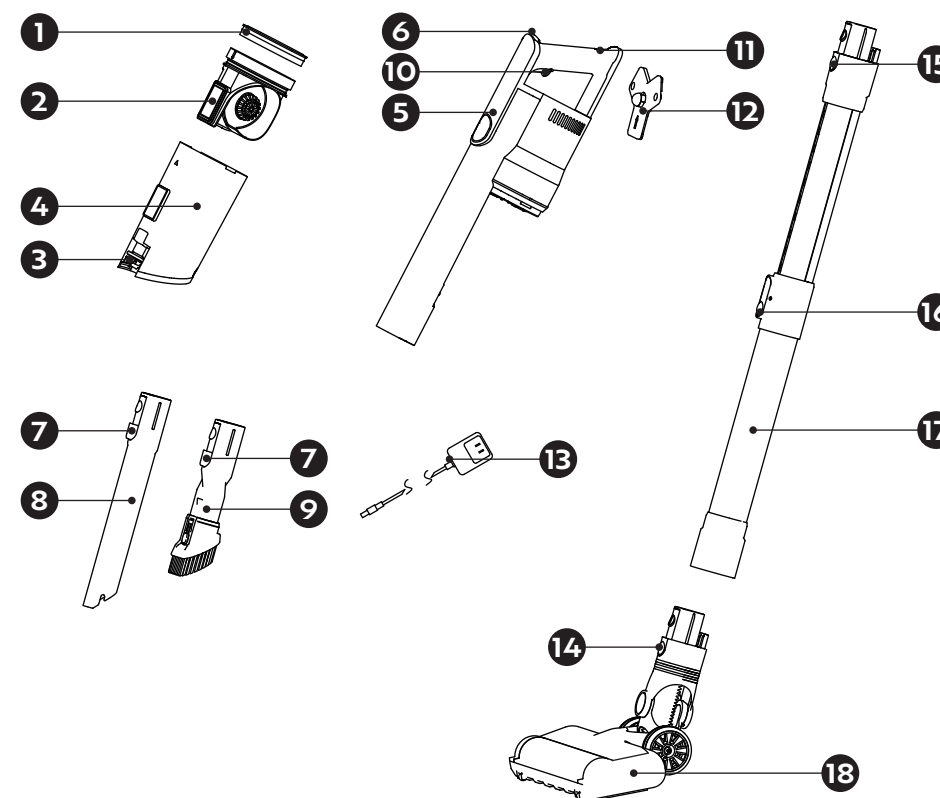
Only allow the use of a dedicated adapter. During charging, it needs to be ventilated and heat-dissipated. It is strictly prohibited to be placed in a high-temperature environment above 50 degrees. Keep the product away from open flames to prevent explosions. The battery pack cannot be detachable.

SECTION J

Structure Overview

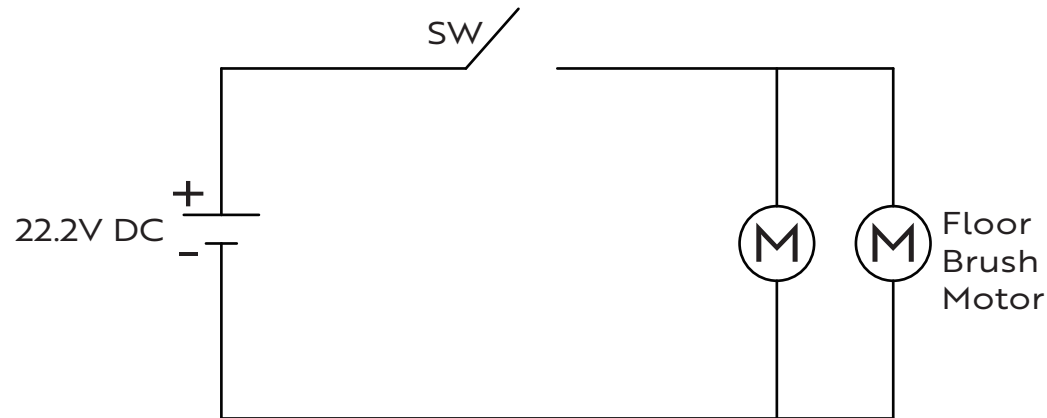


1	Filter	11	Charging port
2	Cyclone assembly	12	Hanger
3	Dust cup release button	13	Adapter
4	Dust cup	14	Floor brush release button
5	Host	15	Connecting pipe release button
6	Dust cup release button	16	Connecting pipe telescopic button
7	Flat suction release button	17	Connecting pipe
8	Long flat suction	18	Floor brush
9	Brush assembly		
10	On/off button		





(This figure is for reference only. If there is an update, it will not be notified separately. Taking the actual thing, the final interpretation right is classified as the company.)



2. Within the environmentally friendly usage period, consumers can rest assured that there will be no issues such as leakage or release of harmful substances during normal use, ensuring the safety of the consumers' health.
3. The environmental protection service life of the company's products is 10 years, which is only specified in this manual. The "environmental protection service life" is valid only when the product is used under normal conditions.

Part name/Hazardous substances	Lead	Mercury	Cadmium
Plastic components	0	0	0
PCB(electronic) assembly	X	0	0
Connecting lead	X	0	0
Battery	X	0	0
Silicon rubber	0	0	0
Screws and gaskets	0	0	X
Motor	0	0	0
Sponge	0	0	0



1. This product meets the requirements of the management office for restricted use of hazardous substances in electrical and electronic products.

Part name/ Hazardous substances	Hexavalent chromium	Polybro- minated	PBDE
Plastic components	0	0	0
PCB(electronic) assembly	X	0	0
Connecting lead	0	X	X
Battery	0	X	X
Silicon rubber	0	X	X
Screws and gaskets	X	0	0
Motor	0	0	0
Sponge	0	X	X

Please read this manual carefully before using your vacuum cleaner especially with regard to safety precautions, and keep it in a safe place for future reference.

If you are transferring this product, please include this manual with it.

Product upgrades and specifications are subject to change without notice, and the actual product form and color may differ slightly from the actual product. Please refer to the actual product.



The VIVOHOME warranty program is our commitment to you. We are committed to providing you with a high-quality product that meets your needs and expectations. To demonstrate our confidence in the durability and performance of our products, we offer the following warranty.

WARRANTY COVERAGE

This warranty program applies to any orders, purchases, receipts, or use of any products sold by VIVOHOME and is valid for a period of 1 year from the date of purchase. However, please note that this warranty period is only valid for the original order. If you receive a replacement order during the warranty period, it will not include a separate warranty period.

WARRANTY EXCLUSIONS

This warranty does not cover damage resulting from misuse, accident, unauthorized modification, or any other circumstances not directly related to the manufacturing and design of the product, including but not limited to:

- Parts lost during use.
- Normal wear and tear of products or parts.
- Incorrect installation (such as using the wrong voltage) or assembly.
- Exceeding the bearing capacity of the product.
- Use under extremely harsh conditions.

- Improper cleaning or maintenance.
- Damage caused by any reason other than the intended use of the product.
- Indirect loss or damage caused by the product.

HOW TO MAKE A WARRANTY CLAIM

If you find any defects that affect the use of the product or if the product stops working and cannot be repaired during the warranty period, please contact our customer service team at our email or via Amazon & app's direct messaging service as soon as possible. Provide the following information to expedite the process:

- Order number
- Images and/or videos illustrating the issue
- A detailed description of the problem

VIVOHOME will provide technical support, replacement, refund, or other solutions based on the nature of the issue. If you wish to return the original package for any reason, please contact us for confirmation before proceeding. You can expect to receive a response within 48 hours.

Thank you for choosing VIVOHOME. We are committed to ensuring the quality and satisfaction of your purchase. If you have any questions or need assistance, please do not hesitate to contact our customer service team.