

ASSEMBLY AND CARE INSTRUCTION

Floor Lamp

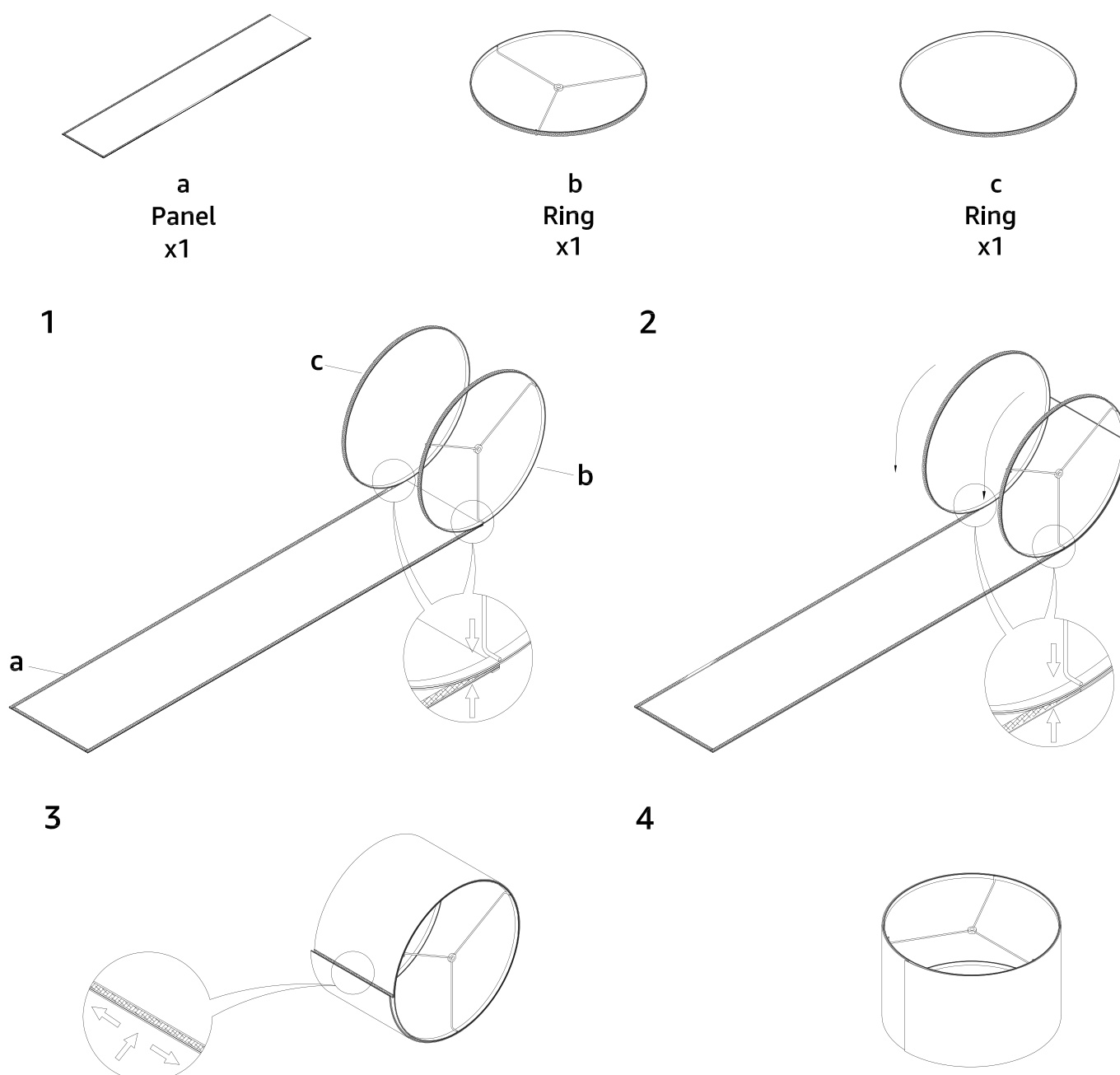
CARE AND MAINTENANCE

Unplug lamps before using any cleaning solutions. Dust shades with a feather duster or with an appropriate vacuum-brush attachment. Wipe with a soft, dry cloth and clean lamp bases with the methods appropriate to the material. Avoid the use of chemicals and household cleaners as they may damage the finish.

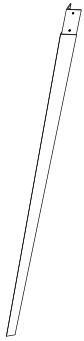
NOTICE & IMPORTANT SAFETY INSTRUCTIONS

- * Please make sure that you have all parts indicated before you begin assembly of this item.
- * This item should be assembled on a soft surface to prevent scratching the finish during assembly.
- * To reduce the risk of fire, electrical shock or injury to persons or property, please follow the guideline below for safe use and installation.
- * The external flexible cable or cord of this luminaire cannot be replaced.
If the cord is damaged, the luminaire shall be destroyed.
- ** This portable lamp has a polarized plug (one blade is wider than the other) as a safety feature to reduce the risk of electric shock, this plug will fit in a polarized outlet only one way, if the plug does not fit fully in the outlet, reverse the plug, if it still does not fit, contact a qualified electrician, never use with an extension cord unless the plug can be fully inserted, do not attempt to defeat this safety feature.

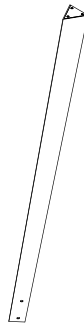
Shade Assembly Instructions



PARTS



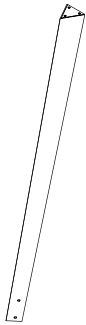
A1
Bottom Leg
x1



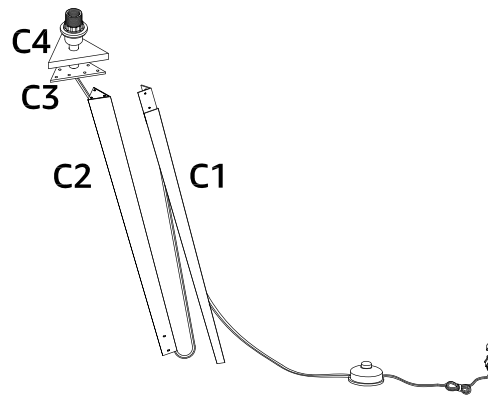
B1
Top Leg
x1



A2
Bottom Leg
x1



B2
Top Leg
x1



C
Lamp Body
x1

HARDWARE



1
x 9 pcs



2
x 12 pcs

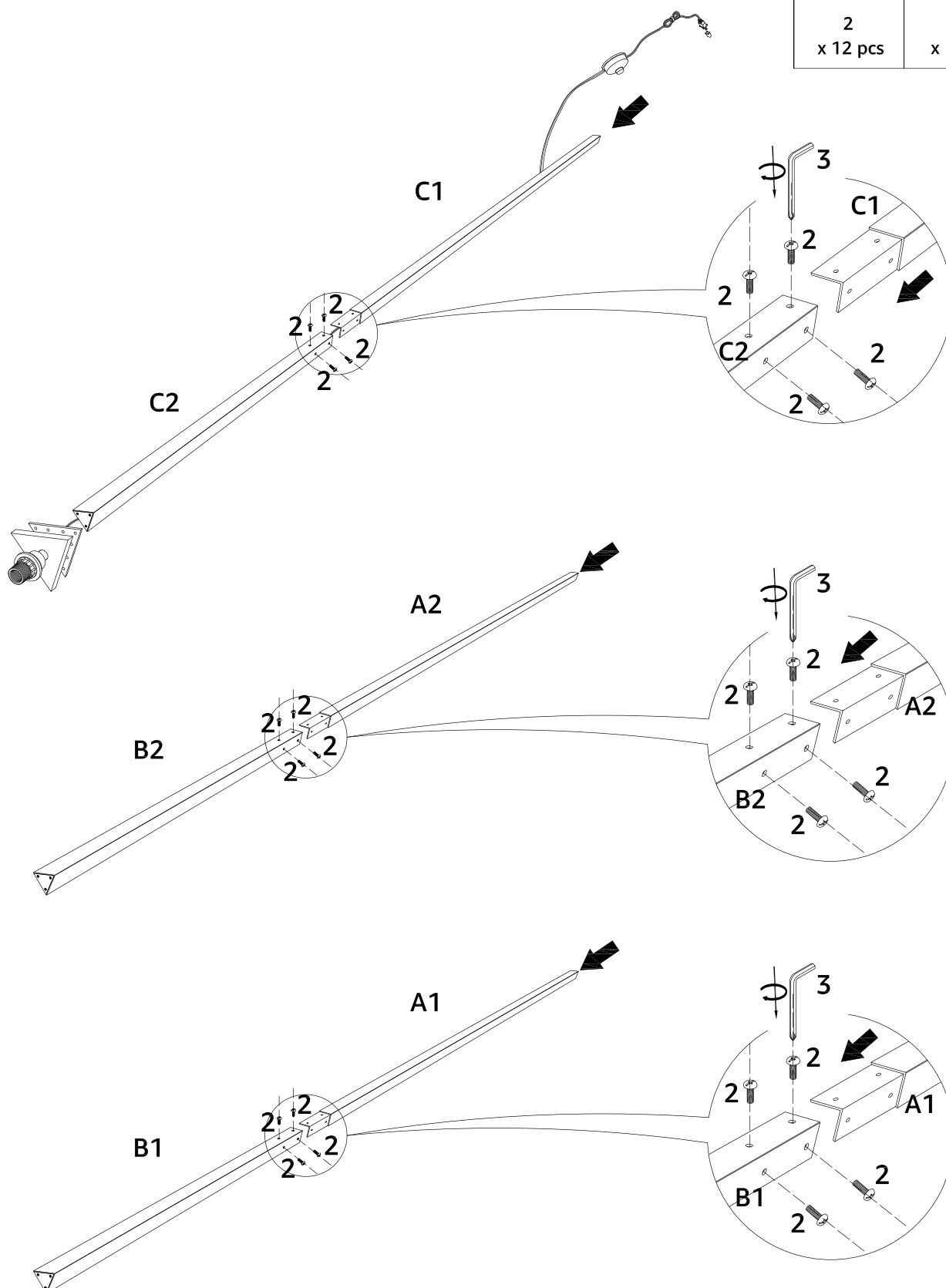
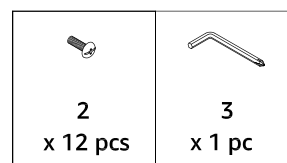


3
x 1 pc

ASSEMBLY INSTRUCTIONS



1

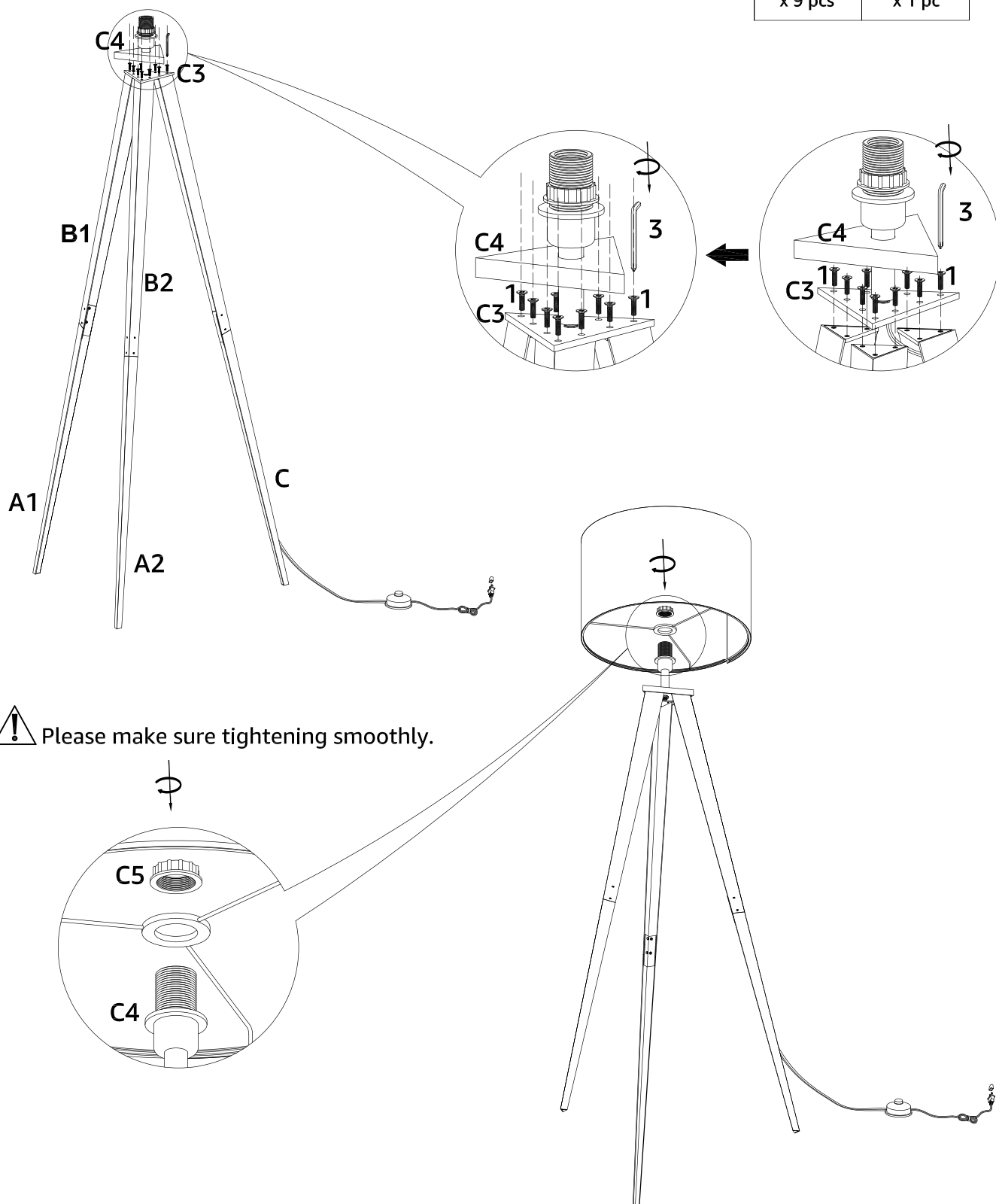
Insert C1 to C2, A2 to B2, A1 to B1, then tighten screw 2 by Allen Wrench 3.



2

Insert the leg A2/B2 and A1/B1 to the lamp body C3.
 Lift the C4 and tighten screw 1 to the lamp body C3 with legs.
 Screw off the C5 at first, then put the shade into C4, then tighten C5 to C4.

	
1 x 9 pcs	3 x 1 pc



3

Put the light on the level surface to check if everything is stable.

