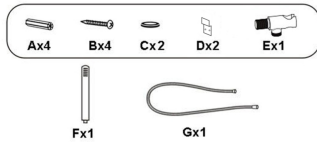


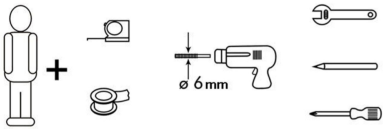
### LIST OF COMPONENTS



Fx1

Gx1

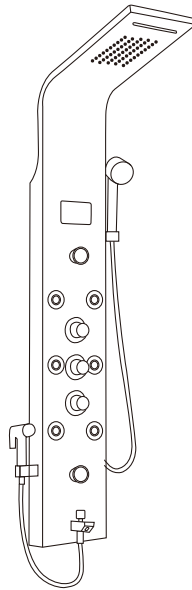
### ELEMENTS FOR INSTALLATION



#### WARNING!

Before testing, please turn on the faucet and leave the water running for about 3 minutes to evacuate the air and dirt trapped in the pipes, in order to prevent these residues causing some damage to the shower panel.

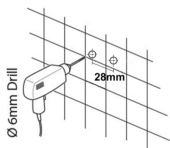
## INSTRUCTION



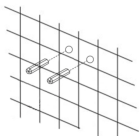
### INSTRUCTIONS

**WARNING!** Before drilling, please make sure there are no pipes or cables in the wall.

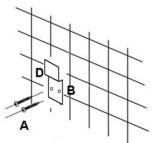
#### I. Drill two holes on the wall



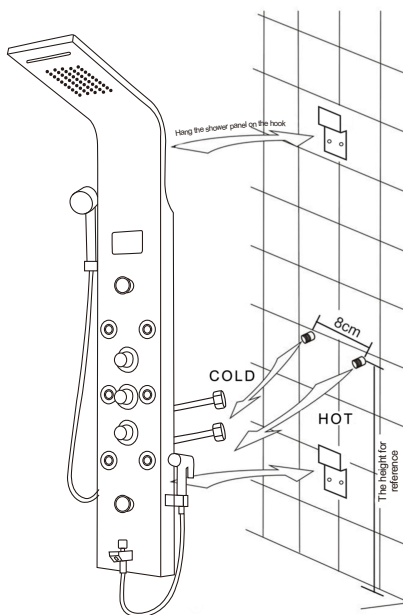
#### II. Insert the screws into the holes



#### III. Fasten the hooks to the wall with the screws



### MOUNTING BY WALL



- A Top spray
- B Hand shower
- C Massage back spray
- D Function controller

