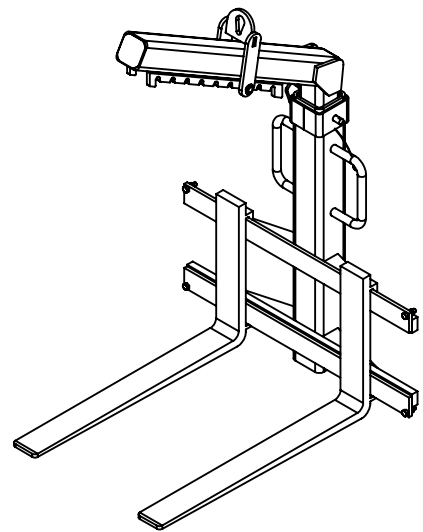
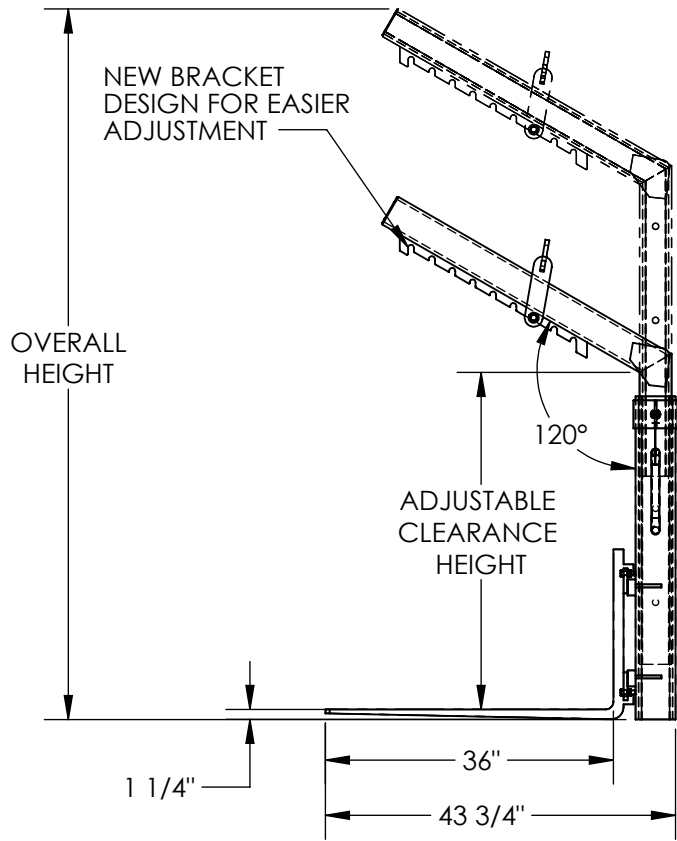
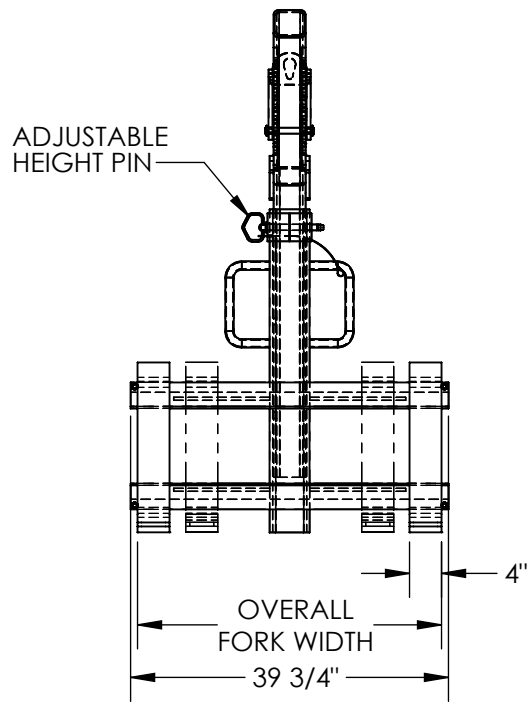


APPROX WEIGHT: 438.06 lbs.
DOES NOT INCLUDE WEIGHT OF POWER OR PACKAGING!!!

DELUXE OVERHEAD LOAD LIFTER - OLA-2-36-DLX

*** ANY ADDITIONS, DELETIONS, OR OMISSIONS MUST BE CORRECTED ON THIS DRAWING AS THIS DRAWING WILL BE CONSIDERED ALL INCLUSIVE ***
ALL GRAPHICS PROVIDED ARE FOR REFERENCE ONLY. IF CERTAIN DIMENSIONS ARE CRITICAL PLEASE VERIFY THOSE DIMENSIONS WITH YOUR SALESPERSON



STANDARD FEATURES

MODEL NUMBER IS OLA-2-36-DLX
MAX CAPACITY IS 2,000 LBS
ADJUSTABLE CLEARANCE HEIGHT IS
42 1/4", 54", 65 3/4"
OVERALL HEIGHT IS
65 11/16", 77 7/16", 89 3/16"
ADJUSTABLE OVERALL FORK WIDTH IS
13" TO 38" (OUTSIDE)
USABLE FORK LENGTH IS 36"
FORK SIZE IS 1 1/4" X 4"
FULLY EXT. HEIGHT IS 89 3/16"
FULLY RET. HEIGHT IS 65 11/16"
OVERALL WIDTH IS 39 3/4"
OVERALL LENGTH IS 43 3/4"
DURABLE LIQUID PAINT BLUE FINISH

SPECIAL FEATURES

NONE

DIMENSION TOLERANCE ± 1/4"

APPROVAL	I, THE UNDERSIGNED, AGREE THAT THE PRODUCT AS REPRESENTED SATISFIES DESIGN AND DIMENSION REQUIREMENTS. I ALSO ACKNOWLEDGE MY DUTY TO CONFIRM PRODUCT AND INSTALLATION COMPLIANCE WITH ALL APPLICABLE FEDERAL, STATE AND LOCAL REGULATIONS AND STANDARDS.	
	ANY MODIFIED UNITS ARE NON-RETURNABLE	
	[] As drawn [] As marked	
	Signed: _____ Date: _____	
Printed Name: _____		
LEAD TIME WILL START UPON RECEIPT OF SIGNED APPROVAL DRAWING		

FOR INTERNAL USE ONLY PROJECT SIGN OFF	
SALES	
ENG.	
FAB.	
POWER	

DISTRIBUTOR'S NAME:		P.O.#
VESTIL MANUFACTURING		X
W.O.#		X
DRAWN BY:	B. HORN	DATE: 5/11/2016
REFERENCE:	X	SCALE: 1:24
QUOTED LEAD TIME:	X	QUOTE # X
FILE NAME:		38-007-033-001