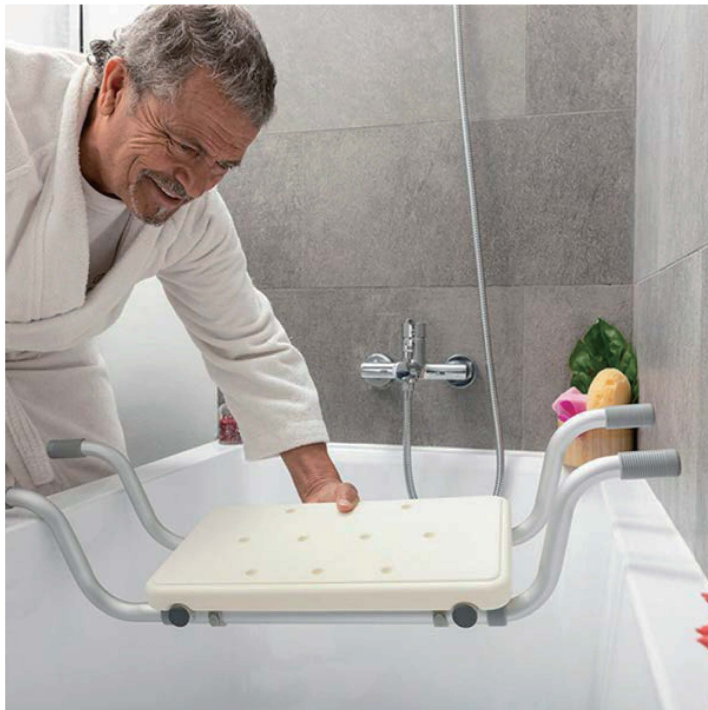




This user manual contains essential information in relation to safe use and should be retained for future use.



## **User Manual**

### **Bath Bench Seat**

Maximum user weight: 150kg (23 stone)

## Introduction

Thank you for purchasing the Bath Bench Seat.

The bench has been designed to help those who have experience difficulty stepping into and sitting down in the bath. The user sits on the board to transfer their legs into the bath and can then stay on the board whilst washing using the shower. The rubber feet ensure that the stool does not slip, which results in a safe and stable unit. The length-adjustable legs allow the bathing bench to be adjusted for people of different length.

## Before Use

Carefully remove all packaging. Avoid using knives or other sharp instruments as this may damage the surface of the product.



Check the product for visible damage. If you see any damage or suspect a fault **do not** use your product and contact your supplier for support.



### Important Safety Instructions

When using the bench, basic precautions should always be followed.

- Read this manual carefully, ensuring that all instructions are fully understood.
- Make sure that the bench is secure with all 4 legs on the tub sides before each use.
- Ensure all 4 legs are set at the same length.
- If you notice damage to the material or frame, remove from use and contact your dealer.
- Do not use a defective bathing bench
- Do not replace or modify any of the parts.
- The maximum load is 150 kg.
- Take care when mounting and dismounting.
- An assessment by a healthcare professional may be required to ensure this item is suitable for the user.

## List of Components

Please check that all of the items listed below are inside the box.

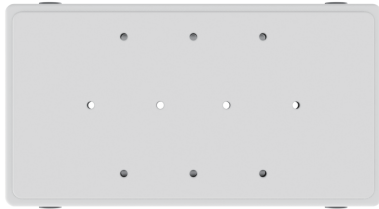


Contact your supplier should any part be missing and do not attempt to use the bench.

1x Bench seat (a)

4x Legs (b)

4x Clip (c)



Bench seat (a)

Legs (b)



Clips (c)

## Assembly Instruction

- Remove all parts from the packaging, check that all parts are there.
- Ensure that none of the parts are damaged.
- Place the seat, with the top facing down, on a table or on the floor.
- Slide each of the four legs into the tubes under the seat. (fig 1)
- Ensuring that the required hole in the leg section lines up with the seat tube hole, push in the clip to secure the leg. (fig 2)

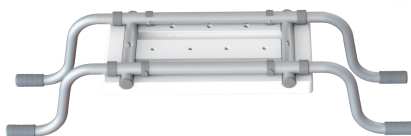


It is essential that the clip is pushed fully into the frame and that all four clips are secure.

Fig 1.



Fig. 2



- Place the seat onto the bath rim, making sure that it is securely fitted. If there is any movement, adjust the leg length by removing the clip on each leg, adjusting the length and re-securing each clip.
- Check the fit of the seat before each use.



Remove from use should any signs of wear or damage be observed.

Replace all worn, missing or damaged parts where necessary. If in doubt, please do not use, but immediately contact your supplier for service support.

### **CARE AND MAINTENANCE**

Please ensure safety checks are undertaken on a regular basis, this should include:

- Checking the condition of the seat and legs.
- Ensuring the non-slip leg sections are all present and in good condition
- Checking that the clips are in place and each leg is adjusted to the same length.

### **IMPORTANT INFORMATION**

The information given in this instruction booklet must not be taken as forming part of or establishing any contractual or other commitment by us, its agents or its subsidiaries and no warranty or representation concerning the information is given.

Please exercise common sense and do not take any unnecessary risks when using this product; as the user you must accept liability for safety when using the product. Please do not hesitate to contact the person who issued this product to you or the manufacturer if you have any queries concerning the assembly/use of your product.