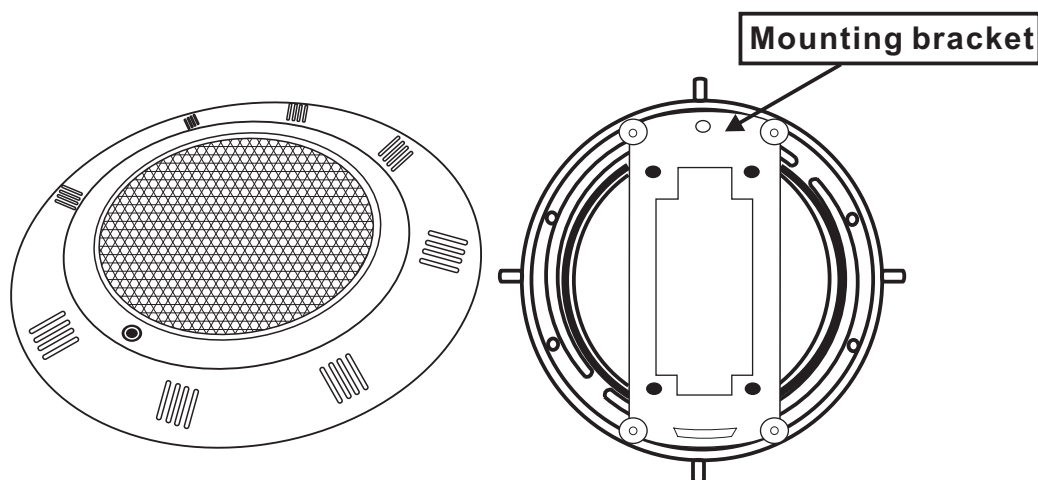


HOW TO INSTALL IT?



POOL light Front
Figure 1

POOL light Back
Figure 2

1. Drill 4 holes for the mounted bracket. install the bracket to the pool wall. The Diagram ① in Figure 3
2. Connect the buckle of the pool light to the bracket buckle. and screws the light to the mounting bracket.
3. Finish area surrounding mounting spacer must be flat and flush with the face of mounting spacer, this ensures a snug fit between light and wall
4. Wrap a length of the cable up to a maximum of 4ft=122cm long on the back the light out of the pool for maintenance.
5. Connect all wires in the junction box and feed paraffin.
6. Secure the junction box cover in place and make sure all gasket/seals fit in properly

1

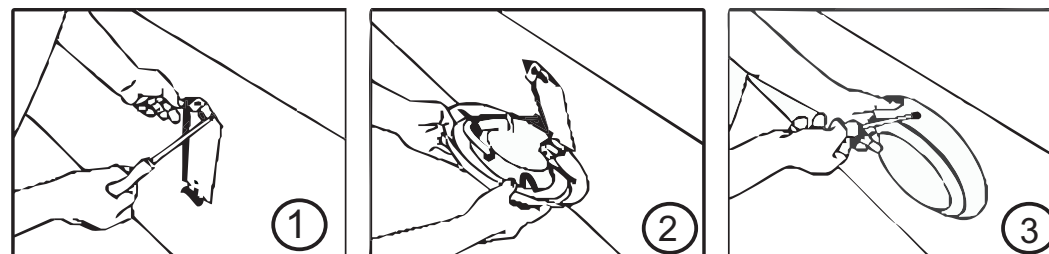


Figure 3

Connect pool lights to the transformer:

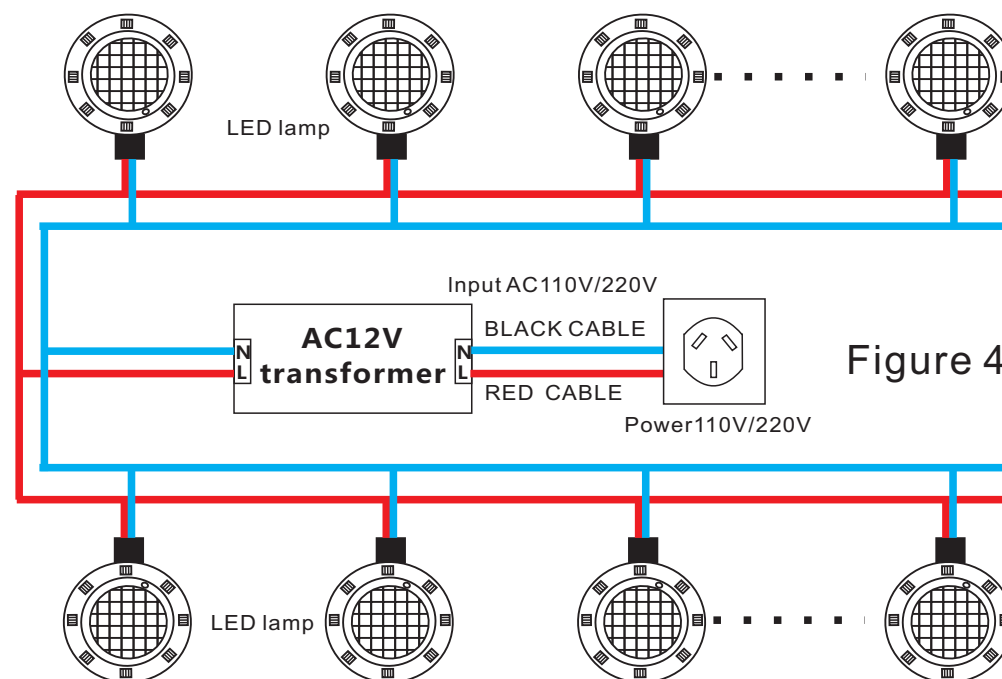


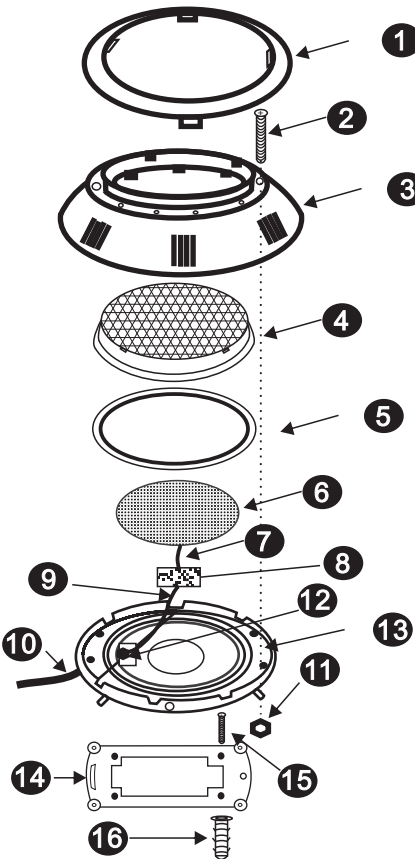
Figure 4

Please note: The input voltage of the lamp is AC12V. So you must use an AC110V/220V to AC12V transformer to connect the lamp

2

POOL LIGHT series Underwater Light Operating Procedures

Underwater Light Replacement Parts
See Figure 5.



COMPONENT

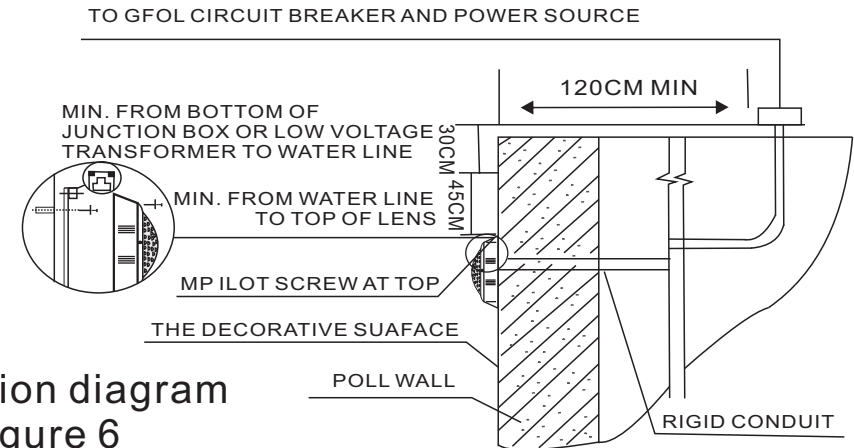
Figure 5

Item	Description
1	Face Ring
2	Screw with nut(8)
3	Cover
4	Transparent bead cover
5	Lens Seal
6	Lamp 12Volt LED lamp panel
7	Wires
8	LED Drive controller
9	Wires
10	Wires
11	Sealing nut(8)
12	Sealing O-ring
13	Body
14	Hanging plate
15	Screw with nut(4)
16	Colloidal particles

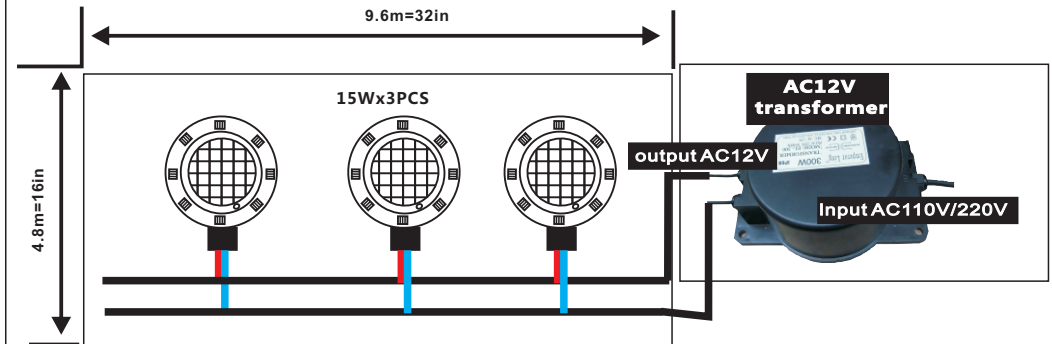
PRECAUTIONS:

Make sure power is turned off before installing or removing lamp
Never use the light for function control longer than 10 minutes without being completely under water!!!

The mounting bracket must be properly installed so that the top edge of the underwater light's lens is approximately 1.5ft=45cm below the surface of the water in the pool. See Figure 6.



Installation diagram
Figure 6



Recommended installation drawing
Figure 7