

For the installation manual
please scan the QR code

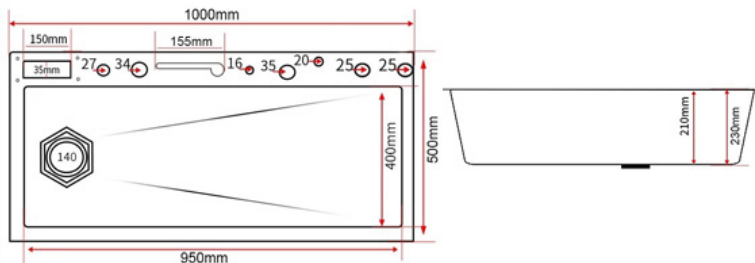


INSTALLATION PREPARATION

Product Sizes and Cutout Suggestions

●PRODUCT PARAMETERS

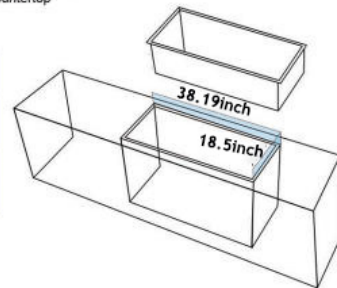
Style	Image	Size	External length & width	Inner length & width	External height	Inner height
Digital Display Sink		10050	100X50cm (39.37*19.69 inch)	95X40cm (35.4*15.75 inch)	23cm (9.06 inch)	21cm(8.27 inch)



●SUGGESTION FOR DIMENSIONS OF CUTOUT

The size of cutout listed below (Drop-in,100*50cm) is just for your reference, please check all the dimensions on site to make sure the sink perfectly fits for your countertop

PRODUCT PARAMETERS		
External Size (Length x Width)	Drop In Cutout Dimensions	Undercounter In Cutout Dimensions
100*50cm (39.37*19.69 inch)	97*47cm (38.19*18.5 inch)	96*46cm (37.8*18.11 inch)



DESCRIPTION OF ACCESSORIES



① Stainless Steel Sink

② Pull-Out Faucet Kit

③ Water Purifier faucet

④ Cup Washer with Hose

⑤ Soap Dispenser

⑥ Drainage System Kit

⑦ Drain Strainer

⑧ Storage Basin

⑨ Draining Basin

⑩ Chopping Board

DESCRIPTION OF ACCESSORIES

●Step 1: Install the pull-out faucet and water switch



01. Faucet of Digital Display Styles



02. Insert the faucet into the sink



03. Separate the gaskets and screws



04. Fasten the gaskets and screws

Tips:

- A. Please connect the 3 hoses (hot water inlet hose , cold water inlet hose and water outlet hose) to the 3 hoses of switch randomly.
 B. There will be another pipe and line for digital display styles, no need to do anything at this step, just fix the faucet with the sink at this moment.

●Step 2: For sinks with digital display: Motor and gravity ball installation



01. Take apart the gravity ball



02. Fix the gravity ball at the proper position of the faucet pipe



03. Gravity ball installation completed



04. Connect the electricity line with motor



05. Connect the motor to the hose



06. Connect the motor with the faucet and fix the position of gravity ball

●Step 3: Install the cup washer



01. Take out the screw gask



02. Insert the cup washer into the sink



03. Connect the cup washer with the hose

●Step 4: Install the water purifier faucet



01. Disassembly the faucet



02. Insert into the sink

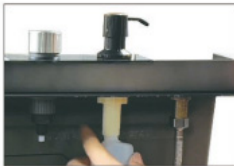


03. Tighten the screws and pipe connector

●Step 5: Soap Dispenser installation



01. Install the tool holder



02. Installation of fixed soap dispenser



03. Completed installation of plastic bottles

●Step 6: install the spray gun on the faucet



01. Prepare the accorsise



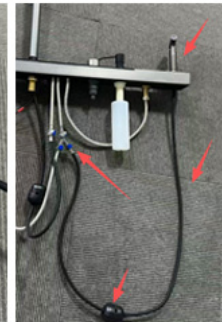
02. Place the spray gun's pull-out tube in the mounting hole.



03. Tighten the spray gun securely onto the pull-out hose connection.



04. The spray gun pull-out hose is connected to the three-way hose.



05. The spray gun pull-out hose is connected to the three-way hose.

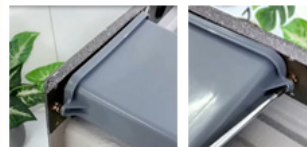
●Step 7. Install the tool holder box



01. Required accessories



02. Install the black washer.



03. Align the tool holder box with the mounting holes and tighten the screws on both sides.



04. Align the blade holder with the mounting holes and tighten the screws on both sides. Align the blade holder with the mounting holes and tighten the screws on both sides. Align the blade holder with the mounting holes and tighten the screws on both sides.

the mounting holes so that it covers the four corner holes. Secure it by tightening the rubber ring and nut. Install two washers on the tee fitting. Connect it to the cutter bracket pipe. Connect one end to the outlet of the cutter bracket and the other end to the drain outlet. (The T-fitting can be placed in the drain pipe or connected to the overflow outlet of the sink's overflow pipe.)

●Step 8. Install the console control switch



01. Unscrew the nut on the inner cup and insert the inner cup into the drain opening from above.



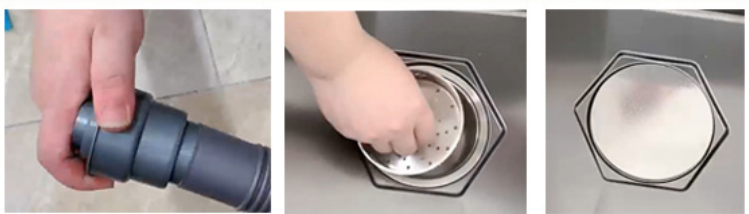
02. Insert the outer cup into the drain outlet from below. Secure the inner cup and drain outlet with screws. Connect the drain tee to the outer cup.



03. Connect the steel wire to the control panel. Install the rubber pad in the hoist cup with the narrow end facing upward.

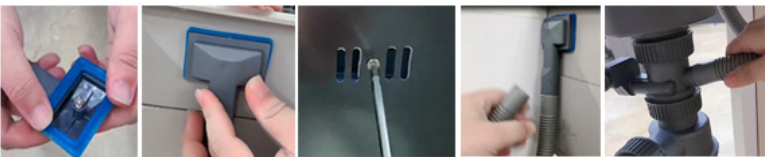


03. Connect to the drain tee. Install the rubber gasket on the drain pipe with the narrow end facing upward. Connect to the gourd cup.



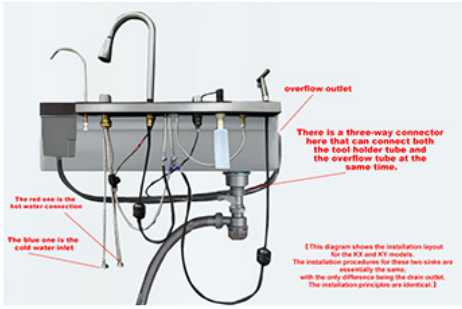
04. Install the outlet spout. Place the filter basket and drain cover.

●Step 10. Install overflow fittings



Install the washer onto the overflow cover and unscrew the nut. Align it with the outer edge of the sink's overflow drain. Tighten the nut from e inside to secure it. Connect the overflow hose, attaching the other end to the drain tee.

●Step 11: Connect your kitchen sink to water supply



Reference: Complete Installation Diagram

[This diagram shows the installation layout for the XZ and XY models. The installation procedures for these two sinks are essentially the same, with the only difference being the drain outlet. The installation principles are identical.]