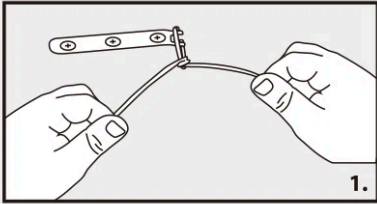
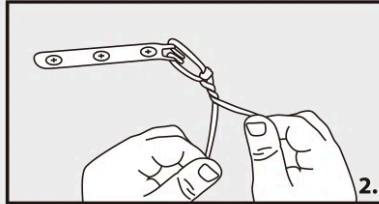


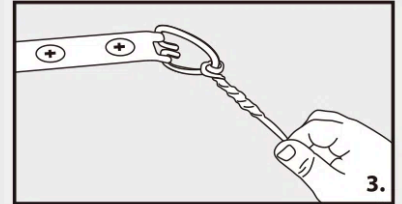
MIRROR INSTALLATION STEPS



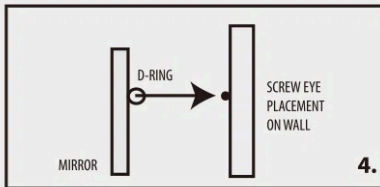
1. Loop picture wire through D-ring twice.



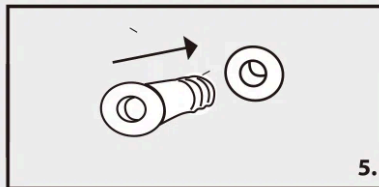
2. Twist short side of picture wire around long side.



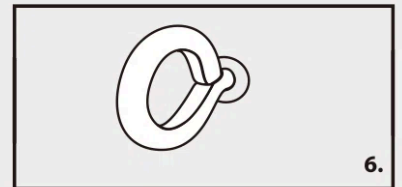
3. Ensure that the picture wire is secured to D-ring.



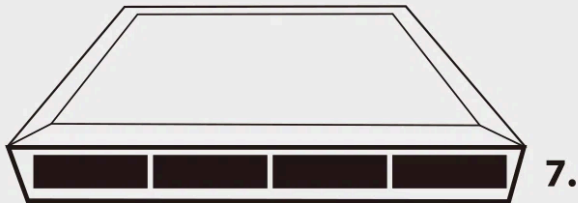
4. Position screw eye on wall level with D-ring



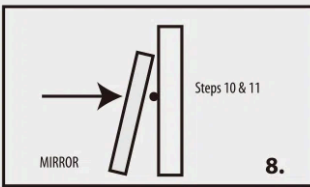
5. Insert the screw eye into the plastic anchor and screw into place as shown.



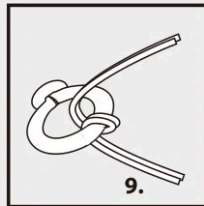
6. If the mounting location is over a wall stud, screw the screw eye through the drywall and into a wood stud, until fastened to the wall firmly.



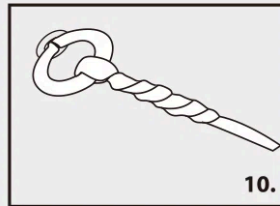
7. Evenly space anti-skid tape to bottom edge of mirror



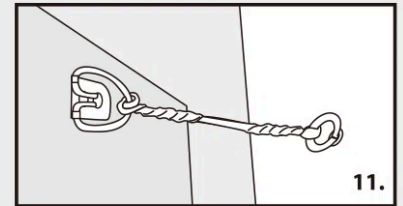
8. Place mirror against wall.



9. Loop open end of picture wire through screw eye twice.



10. Twist remaining end of picture wire around the length of picture wire heading into the screw eye



11. Finished assembly looks like this.