

Smart Glass Panel Heater



2 year
guarantee*

1000W | RED1000GB

1500W | RED1500GB

2000W | RED2000GB



Instruction Manual



British engineering &
innovation since 1928

THANK YOU

FOR CHOOSING



We hope you love your product for many years!



Register your purchase

www.rediffusion.uk/registermywarranty

Scan QR code using mobile device

Rediffusion offers a standard one-year warranty. The standard one-year guarantee is only extended to 2 years upon registration of the product within 30 days of purchase. If you do not register the product with us within the 30-day period, your product is guaranteed for 1 year only.

The registration will enable us to contact you in the unlikely event of a product safety notification. You can find more details about guarantee and service further on in this manual.

CONTENTS

TECHNICAL SPECIFICATION	1
IMPORTANT SAFEGUARDS	2 & 3
INSTALLATION	4
HOW TO USE	5
WIFI FUNCTION	6 & 7
OPERATION BY WIFI	8
CLEANING & CARE	9
DISPOSING OF THE PRODUCT	10
CUSTOMER SUPPORT	11
GUARANTEE & WARRANTY	12

TECHNICAL SPECIFICATION

Product:	RED1000GB	RED1500GB	RED2000GB
Power:	1000W	1500W	2000W
Voltage/Frequency	220-240V~, 50-60Hz		
Dimensions:	60 x 24 x 43	76 x 24 x 43	92 x 24 x 43
Net Weight:	5.1kg	6.2kg	7.4kg
IP Waterproof:	IP24		

Important Safeguards

When using electrical appliances, basic safety precautions should always be followed, including the following:

1. Read all instructions before using your product.
2. The appliance is not intended for use by persons (including children) with reduced physical, sensory, or mental capabilities, or lack of experience and knowledge unless they have been given supervision or instruction concerning the use of the appliance by a person responsible for their safety.
3. These heaters are intended for domestic use only. They can be used as both portable appliance and wall-mounting appliances.
4. Only connect the heater to a single-phase socket with a mains voltage as specified on the rating plate.
5. Do not leave your home while the appliance is in function: ensure that the switch is in the OFF (o) position and the thermostat is in the minimum position. Always unplug the appliance.
6. Keep combustible material such as furniture, cushions, bedding, paper, clothes, curtains etc. at least 100cm away from the heater.
7. Do not hang anything on or in front of the heater.
8. Always use the heater in an upright position.
9. Do not place the heater against furniture, curtains, etc.
10. Do not use the appliance in rooms less than 4m² area.
11. Always unplug the heater when not in use. Do not pull the cord to unplug the heater.
12. Keep the air inlet and outlet free from objects at least 1m in front and 50cm behind the heater.
13. Do not install the heater immediately below a socket- outlet.
14. Do not let animals or children touch or play with the heater. Pay attention the air outlet gets hot during operation.
15. Do not cover. If covered, there is the risk of overheating.
16. Do not use this heater in the vicinity of showers, bathtubs, wash basins a swimming pool etc.
17. Do not use the heater in rooms containing explosive gas inflammable solvents, varnish or glue.
18. Keep the heater clean. Do not allow any objects to enter any ventilation or exhaust opening as this may cause electric shock, fire or damage to the heater.
19. If the heater has been dropped or damaged it should not be used until it has been inspected by a qualified service center.
20. Close supervision is necessary when the heater is being used by or near children, persons suffering from any physical impairment, or pets.
21. Do not use it to dry clothes or any fabric.
22. Do not use the heater to dry your laundry. Never obstruct the intake and outlet grilles (danger of overheating).

Important Safeguards

1. Do not move the appliance while it is functioning in order to avoid overheating with the additional risk of fire.
2. If any part of the heater or supply cord becomes damaged, it must be replaced by a qualified electrician. In order to avoid a hazard.
3. The heater must not be located immediately below a socket- outlet.
4. Do not use this heater with a programmer, timer or any other device that switches the heater on automatically, since a fire risk exists if the heater is covered or positioned incorrectly.
5. Do not leave the heater switched on when leaving your home or going to sleep.
6. Children should be supervised to ensure that they do not play with the appliance.
7. This appliance can be used by children aged from 8 years and above and persons with reduced physical, sensory or mental capabilities or lack of experience or knowledge if they have been given supervision or instruction concerning use of the appliance in a safe way and understand the hazards involved.
8. Children shall not play with the appliance. Cleaning and user maintenance shall not be made by children without supervision.
9. Children of less than 3 years should be kept away unless continuously supervised.
10. Children aged from 3 years and less than 8 years shall only switch on/off the appliance provided that it has been placed or installed in its intended normal operating position and they have been given supervision or instruction concerning use of the appliance in a safe way and understand the hazards involved.
11. Children aged from 3 years and less than 8 years shall not plug in, regulate and clean the appliance or perform user maintenance.
12. Do not leave unattended when plug in to the mains supply.



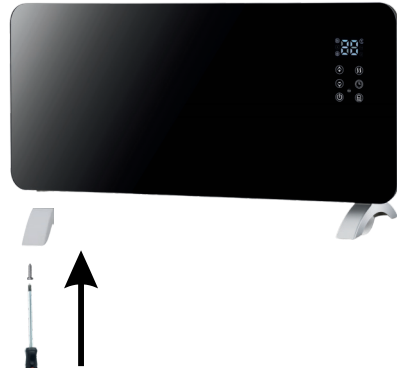
Caution

1. Some parts of the heater can become very hot and cause burns. Do not touch hot surfaces.
2. Particular attention has to be given where children and vulnerable people are present.

Installation

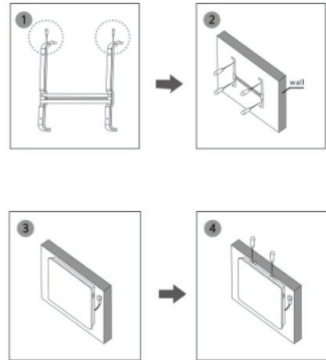
Foot Assembly

1. Attach the feet to the base of the heater using the supplied ST4x12mm (8pcs) screws.
2. The heater will stand vertically when the feet are installed.
3. If the heater tilts backward, please remove the feet and rotate them before fitting again.



Wall mounting

1. Please note that the product must be installed at least 15 cm from the floor and 50 cm from the ceiling.
2. First install the bracket with screws provided. (Image 1)
3. Drill the holes in the wall on each side, then insert the plastic expanded plugs and fix the bracket in the wall with screws provided. (Image 2)
4. Place the heater into a suitable position ensuring that the holes align with the bracket. (Image 3)
5. Tighten the screws on the top of the bracket. (Image 4)



How To Use

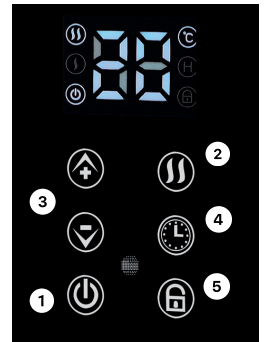


Parts Description:

1. On/Off switch
2. Display
3. Touch button control panel
4. Heater
5. Feet
6. Wall bracket

Touch screen Control Panel

1. **Power function:** Press to set functions. The display will show what function is active. The heater works at low power heating conditions.
2. **Mode:** Press to regulate low, or high temperature power.
3. **Temperature Selection:** Press "+" or "-" button to select the desired temperature from a range of 5° - 40°C. The temperature indicator will remain lit for a long time.
4. **Timer:** Press to select the desired range between 1 - 24 hrs.
5. **Child lock:** To **enable** childlock, hold down the button for 3 seconds and the lock icon will be displayed on the screen. To **disable** child lock, hold the lock button for 3 seconds and the lock symbol will disappear.



How to use:

1. Insert the plug into a suitable socket outlet on an A.C. power supply having the same voltage as that shown on its rating label.
2. Before working the heater, you should turn on the switch on the side of the product.

WiFi Function

Connection by WiFi

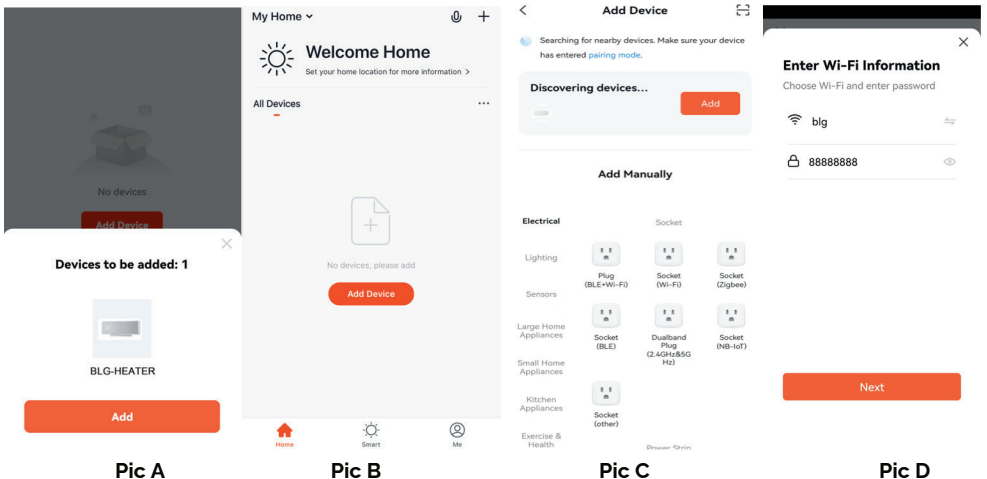
1. Use your phone to scan the QR code or search "Tuya Smart" in your app store to download and install the App.
2. Open app and select sign up, enter your details and tap "Get verification code" to get a message containing verification code.



Note: There are two ways to add the device, please refer to section A & B

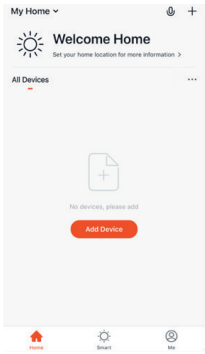
A. Bluetooth

1. Ensure that Bluetooth remains active when the product is functioning properly. Open the "Tuya Smart" app, and a link will appear. Click on "Add," as illustrated in Image A.
2. If there is no such situation as A.1 then press "Add Device", as shown in picture B.
3. Next, click on "Add" located at the top of your screen. The display will resemble Image D, where you should input your Wi-Fi password.
4. The screen will then transition to Image 7. At this point, you can commence using the device. Refer to Image 7 onwards for how to operate the heater via the Tuya app.

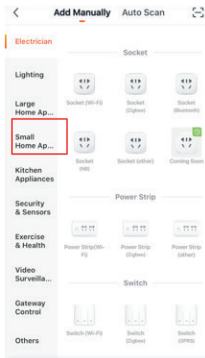


WiFi Function

B. WiFi (Bluetooth is not enabled)



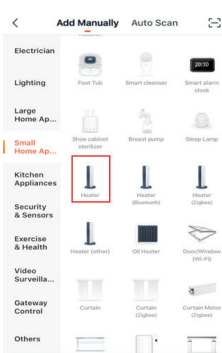
Pic 1



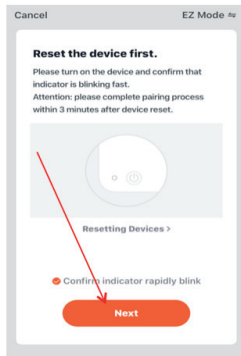
Pic 2

1. Select the product category "Small Home Appliance" then select "Heater" symbol.
2. Enter the verification code in the message and tap "Login" to log in to the App.
3. Switch on the product and make sure the product is in a WiFi-covered environment.

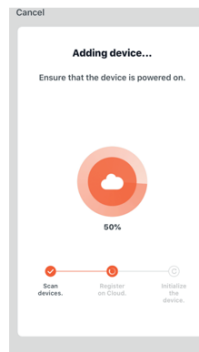
Note. The indicator light will rapidly blink. If the indicator light does not rapidly blink, please press "One start Button "for 5 seconds and the product will emit a beep sound. Then go to the App, tap "add device", as shown in picture 1,



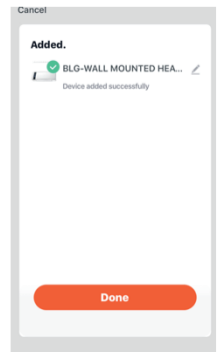
Pic 3



Pic 4



Pic 5



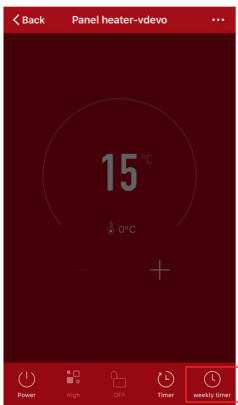
Pic 6

1. Select "Add Device," as shown in Image 1
2. Opt for "All Devices," as shown in Image 3.
3. When the device's indicator light rapidly blinks, press the "confirm" button, as shown in Image 4.
4. Input your Wi-Fi password and confirm it, as shown in Image 5.
5. Wait for the app to establish a successful connection with the device, as portrayed in Image 6.

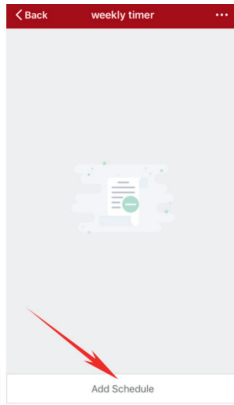
Operation by WIFI

You can control the device using your mobile device in both WiFi and 4G LTE environments.

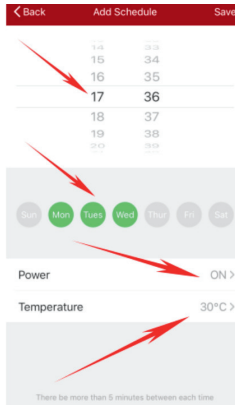
1. To set up a weekly timer, first, select the "Weekly timer" option.
2. Press the "Add schedule" button, as illustrated in Image 8.
3. You can then choose the desired weekly schedule and timer settings. Please ensure that the set temperature is higher than the current temperature when turning on the power, as demonstrated in Image 9.
4. Save your settings by clicking the "Save" button located in the top-right corner, ensuring that your weekly timer settings are retained during start or stop events, as depicted in Image 10.
5. If you need to adjust or create another schedule for the weekly timer, repeat the process for the next schedule.
6. To review the schedules you've set, use the "back" button in the top-left corner.
7. If you wish to cancel a schedule, simply press and hold the corresponding record.



Pic 7



Pic 8



Pic 9



Pic 10

If you have any issues connecting your heater to your smart speaker, head over to support.tuya.com for help.

Operating sound

The appliance emits a beep upon each operation setting.

Cleaning & Care

This appliance requires little maintenance and contains no user-serviceable parts. Do not try to fix it yourself. Refer it to qualified service personnel if servicing is needed. The fan is permanently lubricated and will not require additional lubrication for the life of the fan.

Cleaning

1. Before cleaning, unplug the appliance and wait for the appliance to cool down.
2. Clean the appliance with a damp cloth. Never use harsh and abrasive cleaners, scouring pad or steel wool, which damages the device.
3. Clean the two air outlets (above and below) by using a vacuum cleaner to remove dust from inside.

Disposing of the Product

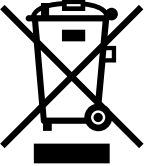
Appliances bearing the symbol shown here may not be disposed of in domestic rubbish. You are required to dispose of old electrical and electronic appliances like this separately.

Please visit www.recycle-more.co.uk or www.recyclenow.co.uk for access to information about the recycling of electrical items.

Please visit www.weeeireland.ie for access to information about the recycling of electrical items purchased in Ireland.

The WEEE directive, introduced in August 2006, states that all electrical items must be recycled, rather than taken to landfill. Please arrange to take this appliance to your local Civic Amenity site for recycling, once it has reached the end of its life.

Correct Disposal of this Product



This marking indicates that this product should not be disposed with other household wastes throughout the EU. To prevent possible harm to the environment or human health from uncontrolled waste disposal, recycle it responsibly to promote the sustainable reuse of material resources. To return your used device, please use the return and collection systems or contact the retailer where the product was purchased. They can take this product for environmental safe recycling.

Customer support

If you have any questions or concerns about your new product, please contact our helpful Customer Support Team:

Please have your Model No. available. This can be found on the front cover of this manual and on the products rating label.

We're here to help!



01274 752624



customerservice@rediffusion.uk



www.rediffusion.uk

Happy with your new product?

We would love to hear your suggestions and feedback about your experience.



Guarantee & Warranty



Register your purchase

www.rediffusion.uk/registermywarranty

Scan QR code using mobile device



Rediffusion offers a standard one-year warranty. The standard one-year guarantee is only extended to 2 years upon registration of the product within 30 days of purchase. If you do not register the product with us within the 30-day period, your product is guaranteed for 1 year only.

The extended warranty is only valid with proof of purchase. Proof of purchase and the registration confirmation (supplied via email upon registration) must be kept for the entirety of the guarantee in order to remain valid.

Do not return this appliance to the store to make a warranty claim. Please call 01274 752624 or email customerservice@rediffusion.uk. For faster service, locate the model number on the rating label on your appliance.

This warranty applies to products purchased and used in the UK. This is the only express warranty for this product and is in lieu of any other warranty or condition. This product is warranted to be free from defects in material and workmanship for a period from the original purchase date; this time frame can vary based on the product. Please refer to our product pages or contact our customer service team if you are unsure of the duration of the product's warranty period. During this period, your exclusive remedy is repair or replacement of this product or any component found to be defective, at our option; however, you are responsible for all costs associated with returning the product to us and our returning a product or component under this warranty to you. If the product or component is no longer available, we will replace it with a similar one of equal or greater value.

This warranty does not cover glass, filters, wear from normal use, not in conformity with the printed directions, or damage to the product resulting from accident, alteration, abuse, or misuse. This warranty extends only to the original consumer purchaser or gift recipient. Keep the original sales receipt, as proof of purchase is required for a warranty claim. This warranty is void if the product is used for other than single-family household use or subjected to any voltage and waveform other than as specified on the rating label (e.g., 120V ~ 60 Hz). We exclude all claims for special, incidental, and consequential damages caused by breach of express or implied warranty. All liability is limited to the amount of the purchase price. Every implied warranty, including any statutory warranty or condition of merchantability or fitness for a particular purpose, is disclaimed except to the extent prohibited by law, in which case such warranty or condition is limited to the duration of this written warranty.*



Capture, tag, and win with
#Rediffusionfamily



@Rediffusionuk

Tag us with **#Rediffusionfamily** on social media. We love seeing your amazing home transformations so much that we regularly feature our favourites and even host exclusive giveaways to show our online family some extra love!

Rediffusion

Belfry House, Roydsdale Way,
Bradford, BD4 6SU
01274 752624
www.rediffusion.uk

Illustrations may differ from actual product. We are consistently striving to improve our products, therefore all specifications contained herein are subject to change without notice.