

## APP connection operation

Tuya Smart APP installation and related connections:  
Scan the QR code on the right or search for "Tuya Smart" in the mobile APP store (program) to download and install the APP→ Click to open and register an account.

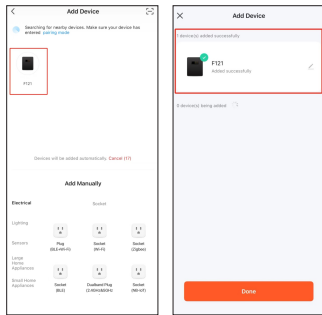


### • Enable Bluetooth pairing **\*+#**

Enter " \*+ # " and verify the administrator. After the verification is successful, start the Bluetooth pairing state 90S.

After activating Bluetooth pairing, open the Tuya Smart APP and tap Search.

As shown in the figure, after the search is added, follow the APP prompts to operate



You can enter the fingerprint only after entering the password for the first time. The password or fingerprint entered for the first three times is the administrator.

- The local fingerprint and password will not be updated simultaneously on the APP.

# F125

## Leather Luxury Safe Drawer

### operation instructions



The pictures are for reference only.  
The actual product shall prevail.

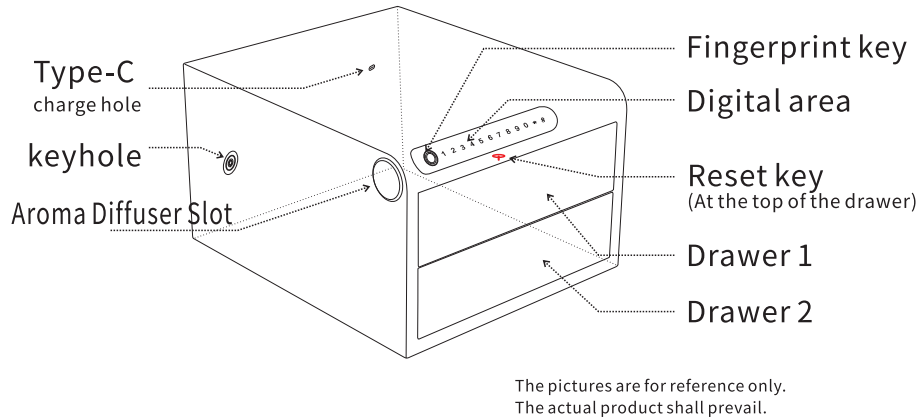
1. This product is intended for indoor use only.
2. To prevent moisture damage, do not spill water or any other liquids on the Product.
3. The manufacturer is not liable for any risks or property damage resulting from failure to follow the operating instructions or adhere to these Precautions.

Thank you for using this product. Please read the product manual carefully before installation

**Note: The factory default password is 123456.  
Spare keys should not be placed in the storage compartment**

# Product Introduction

## Functional part analysis:



The pictures are for reference only.  
The actual product shall prevail.



## Basic parameter

Model Name: F125 Luxury Safe Drawer	Starting mode: Decelerating motor + mechanical drive
Power supply: lithium-ion battery	Standby current: 30~50uA
Operating voltage: 3.6V~4.2V	Emergency power supply: 5V Type-C
Operating temperature: -20°C~+55°C	Relative humidity: 20%-90%RH
Number of passwords: 100 Password	
Length: 4-6 characters	
Number of fingerprints: 100	
Number of administrators: 3 (the first three are recorded as administrators without distinguishing passwords and fingerprints)	

### • Opening method:

Password unlock: Touch the digital area to wake up the system, enter the password 123456, press "#" to confirm.

Fingerprint unlocking: fingerprint initial unlocking, any fingerprint unlocking.

**After a single verification, all drawers can be opened continuously and hibernate after no operation for 8 seconds.**

# Operating instructions

### • Input method:

The first input must be the password, the fingerprint and password can be continuously input, you can press the "★" key to exit.

The first three entries are administrators, and do not distinguish fingerprints and passwords.

### • Password entry method

Open the drawer, press the reset key (or press ★#), the fingerprint head lights up white, verify the administrator (the initial password is 123456), the fingerprint head blue light flashes, enter the password to be entered, the password length is 4-6 digits. Press "#" to confirm, the green light flashes, enter the password again, press "#" to confirm. The green light is on. The buzzer beeps. The record is successful.

»»»»» If the blue indicator blinks, continue to enter your fingerprint or password.

Press ★ to exit the recording state. <<<<<<<

### • Fingerprint entry method

Open the drawer, press the reset key (or press ★#), the fingerprint head lights up white, verify the administrator (the first three entered fingerprints or passwords), the fingerprint head blue light flashes, put the finger to enter the fingerprint on the fingerprint device, the buzzer "drops" 1 sound, take away the finger, this operation is repeated 5 times, the green light is on, the buzzer buzzes for a long time. The record is successful.

»»»»» If the blue indicator blinks, continue to enter your fingerprint or password.

Press ★ to exit the recording state. <<<<<<<

### Tips

Verification failure: The fingerprint indicator beeps three times and blinks red.

Registration is successful: The buzzer beeps and the green light is on.

Registration failure: three short sounds, the fingerprint is red on, and all key lights blink three times.

Lock function: If you enter incorrect passwords for five consecutive times, the system will be locked for 60 seconds. The system does not respond to any operation during the lock period. Wait for 60 seconds before the system recovers.

Supports a maximum of 30 virtual passwords for enhanced security.

For example, if the correct password is 23456, enter 94646521 23456 79456152.

## Factory data reset

When the door is open, press and hold the reset button for more than 10 seconds to recover successfully. Clear all fingerprints and passwords, restore the factory defaults, and restore the initial password 12356.

You can also choose to restore factory Settings in the mobile APP.