



OPTIONAL COT MATTRESS



Made in China

Folding Camping Cot

User Manual



NOTE:

1. The folding bed has no side bag.
2. The folding bed may be a little tight when first opened, the bed will be flattened by pressing the middle of the bed with your hand and pressing the other end of the bed with the other hand.
3. If you accidentally pour water onto the folding bed during use, please dry it and then fold it up.
4. When not in use, please put it in the carry bag and store it in a dry and ventilated environment to make the product last longer.

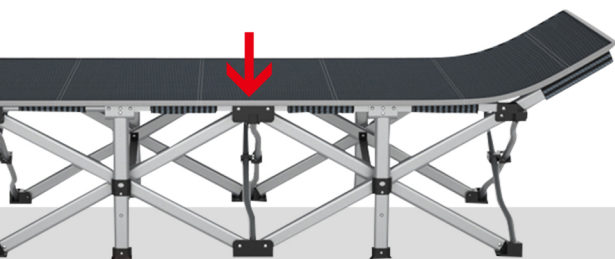
INSTALLATION STEPS



① Remove from carry bag and extend out arms.



② Straighten out frame.



③ Press bars until bar ends snap into bracket. Make sure bar ends on both sides are locked.

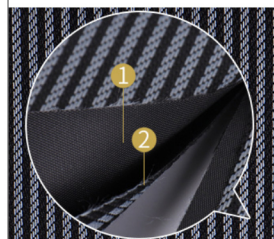


④ To pack up, pull bars from head and foot area towards center.

PRODUCT DESCRIPTION

① Upgrade the bed surface

Double layer 1200D
high density striped Oxford cloth.

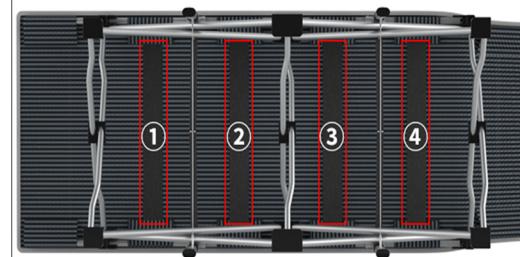


Two layers 1200D
quiet stitching
twice as strong



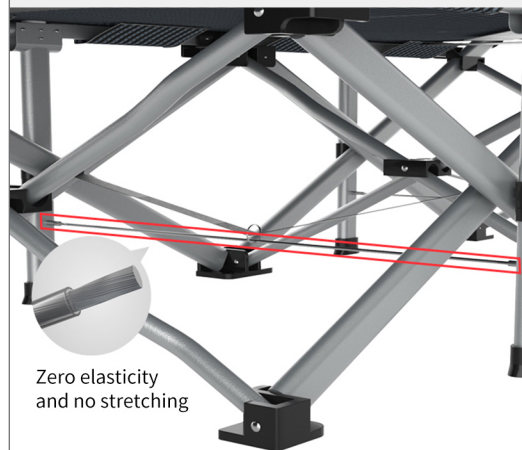
② Anti-dent reinforcement

Four strong anti-sag reinforcement belts Closely fits the human body curve to ensure healthy sleep.



③ Wire Right Angle Bandage

The side of the bed is not inverted, and the right angle is no longer expanded, The upgrade adopts 3MM rubber-coated steel wire lock.



Zero elasticity
and no stretching

④ Double bed reinforcement

There are four anti-concave reinforcement belts on the back of the reinforced version. The legs are reinforced with cross-tube balance weights.

