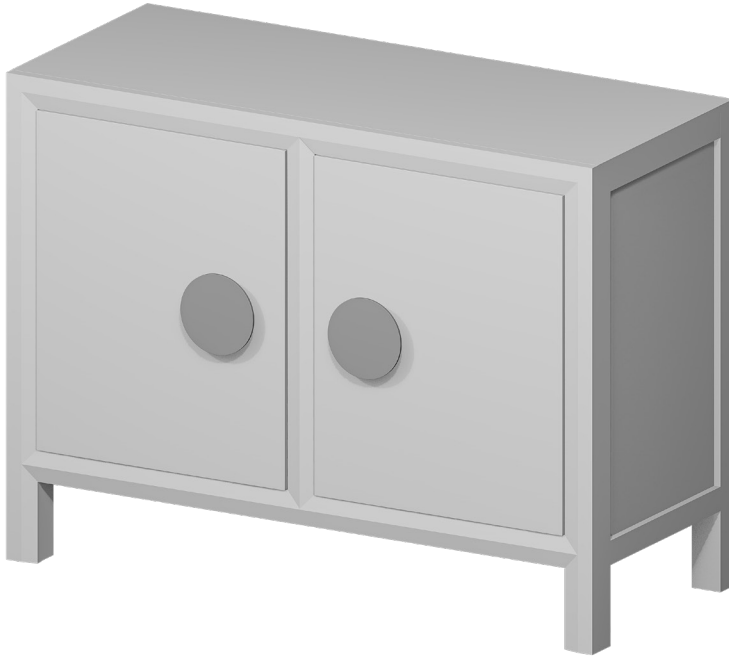


Installation & Assembly



05 : 00

estimated assembly



1 or more

people required

Ok, let's
get started!



- Put on mood music!
- To prevent damage to product, use the clean side of package carton or rug as working surface.
- In the event of missing or damaged parts, delivery problems etc., please reach out to our team.
We will be happy to fix the problem!

care guide

- Clean regularly with a soft and dry cloth.
- To protect finish, avoid use of abrasive cleaners.
- Wipe up spills immediately. Please!



product parts

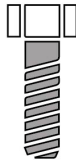


(A)
Sideboard
x1

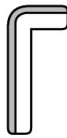


(B)
Knobs
x2

what's included



(C)
Bolt (6x25mm)
x2



(D)
Allen key(4mm)
x1

assembly instructions

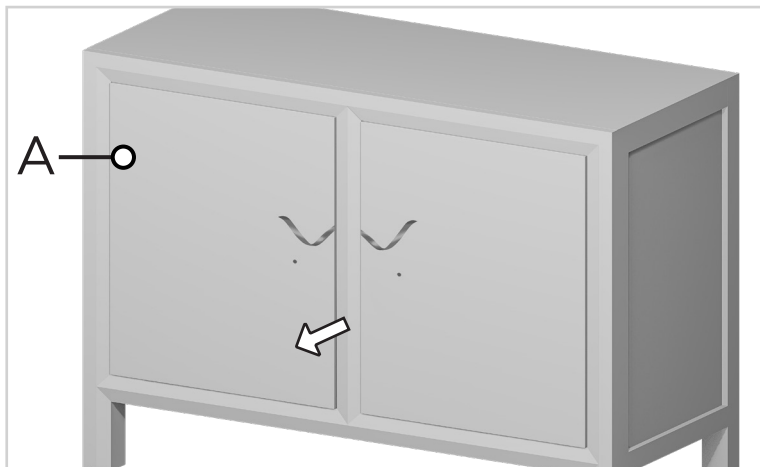
Friendly Tip: Take a deep breath going in. This may be a tricky part, but nothing too overwhelming. Just follow these steps to the T and the outcome will be worth it!



- ⓘ While assembling the product, tighten the bolts up to 50%. Once all parts are in place, only then fully tighten the bolts.

step 1:

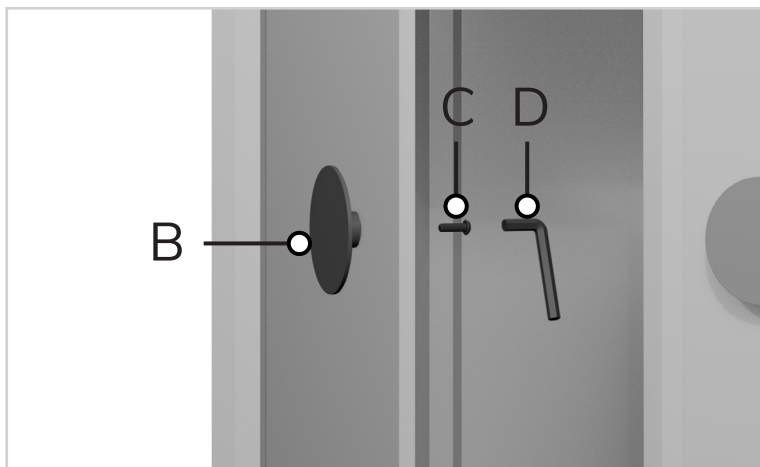
Pull on the ribbon to open the drawers.



step 2:

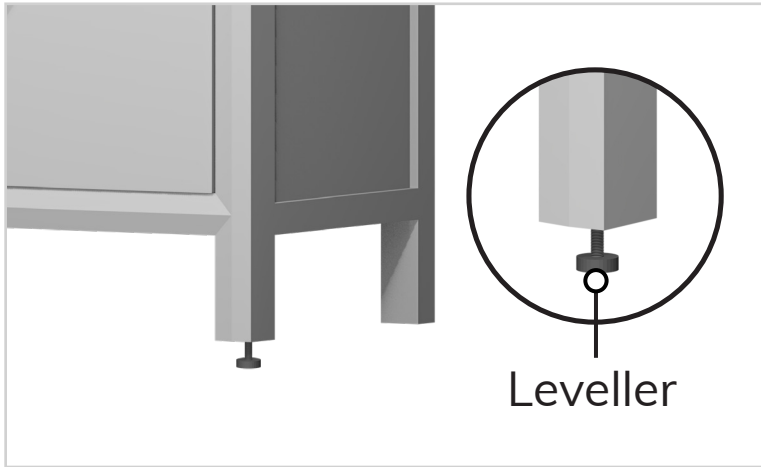
Place the Knobs (B) outside and attach them using the bolts (C). Tighten it using allen key (D).

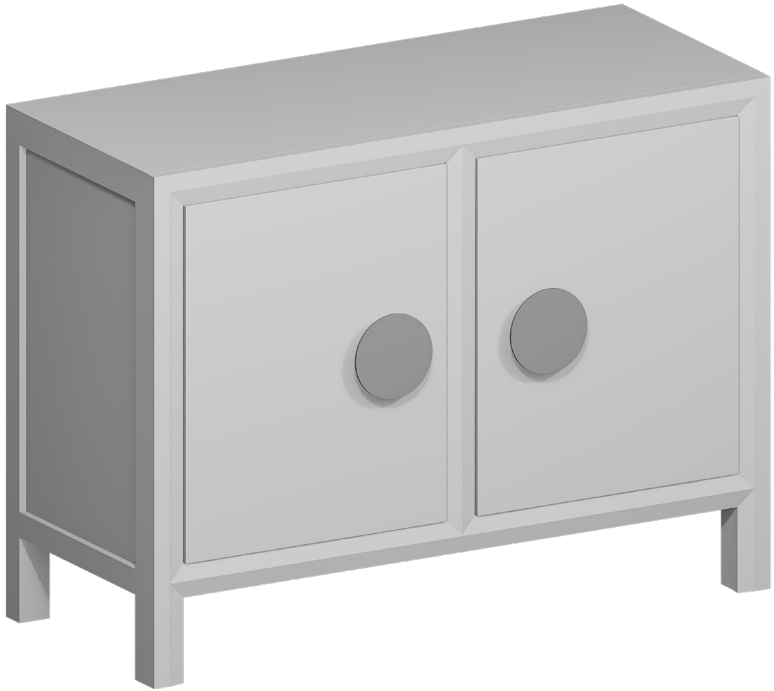
NOTE - Hold the knob in one place & rotate only the bolt. Also, ensure that the wood grain on the knob is in the same direction as the wood grain on the sideboard.



step 3:

If required, adjust the levellers according to the floor as shown in the image.





Voila! Your sideboard is now assembled and secure!
