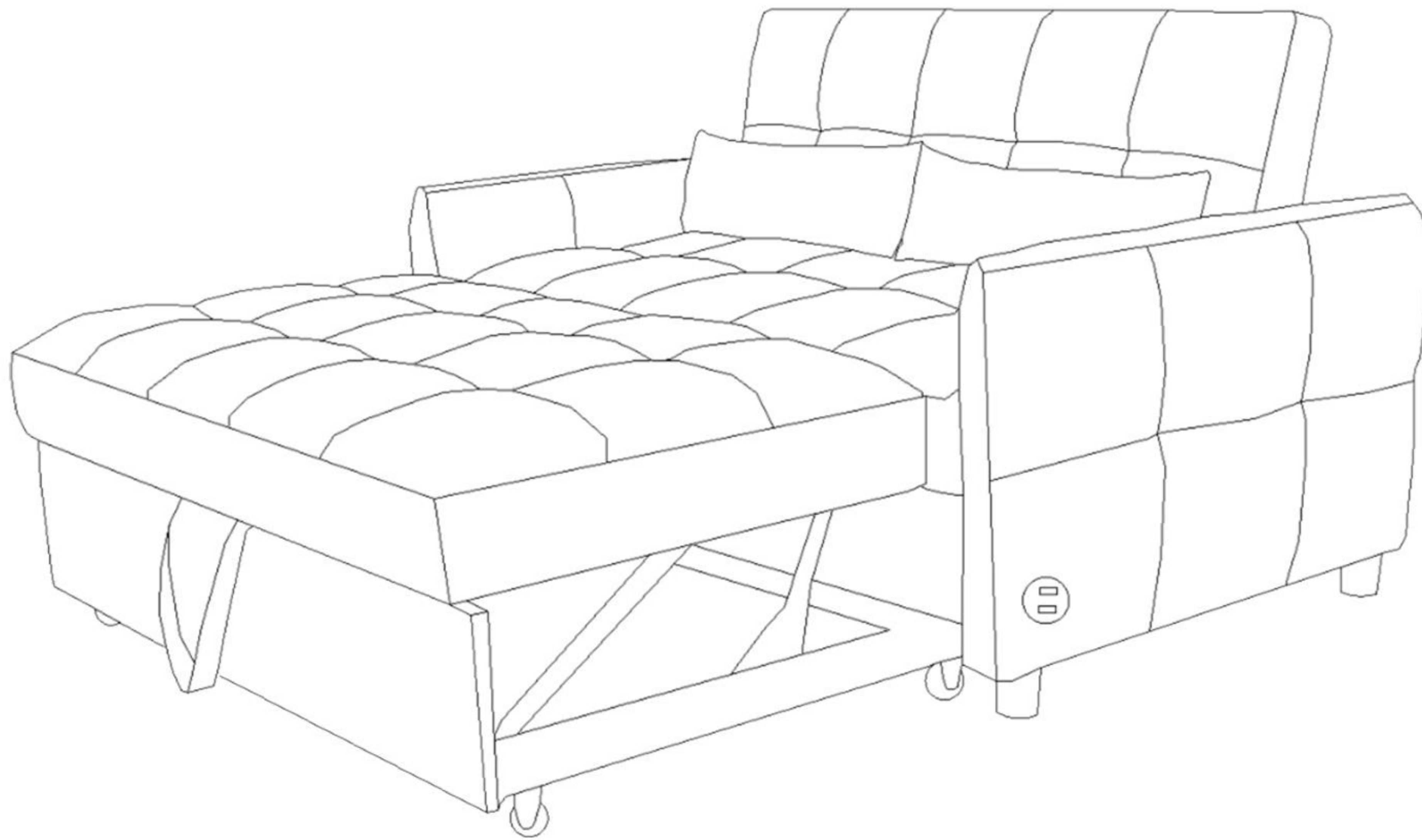
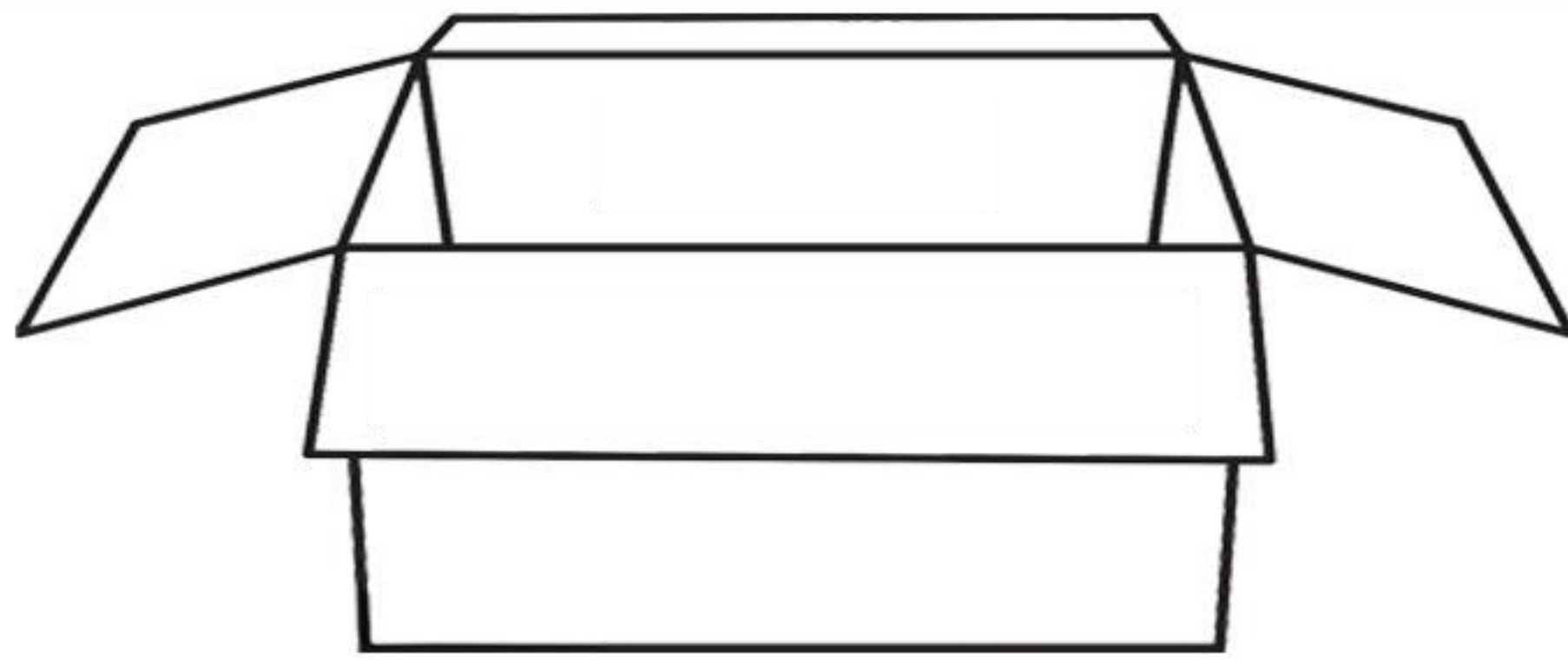
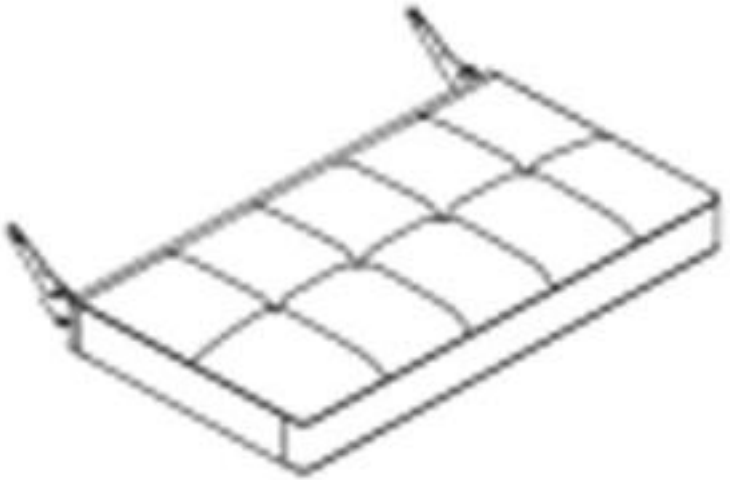
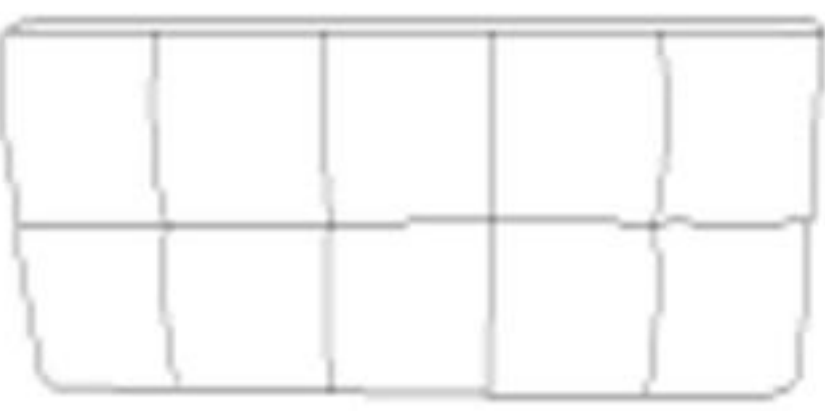




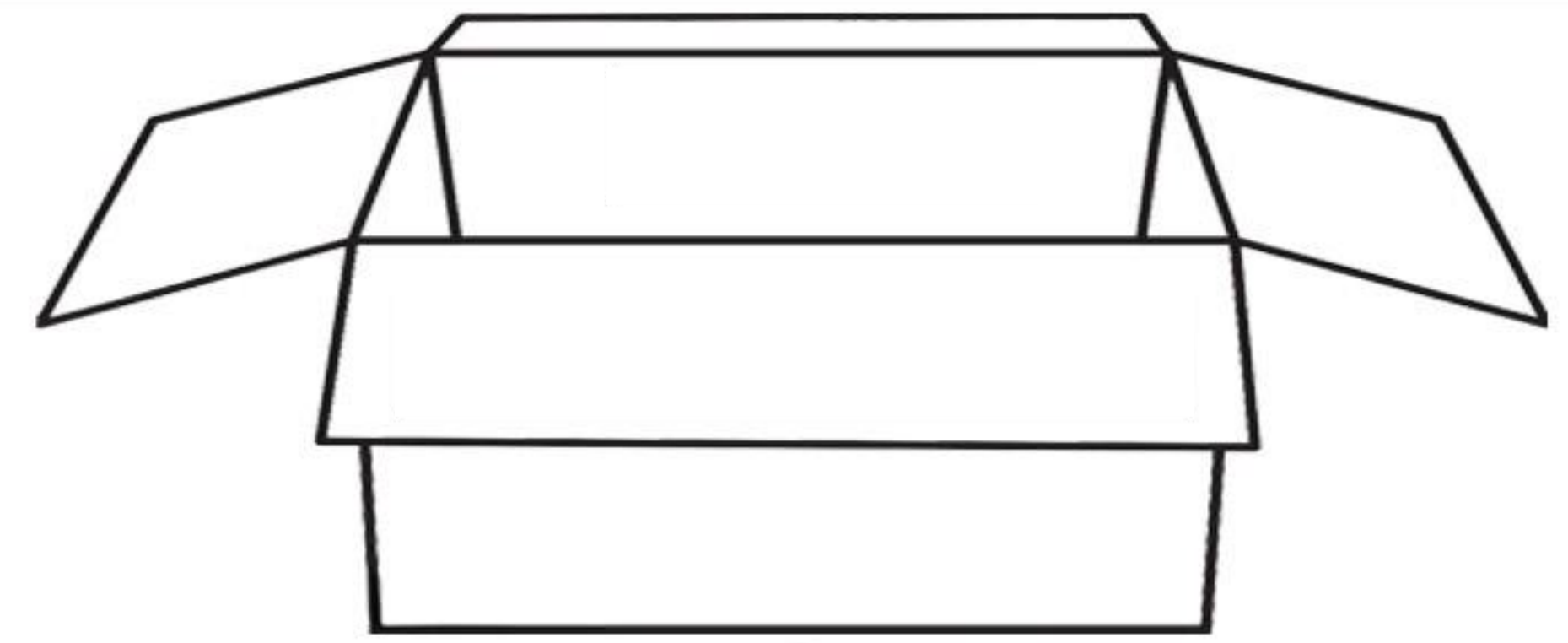
# Assembly Instruction

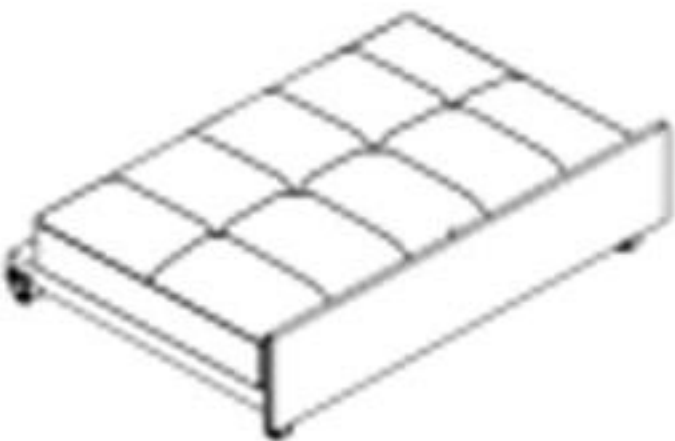
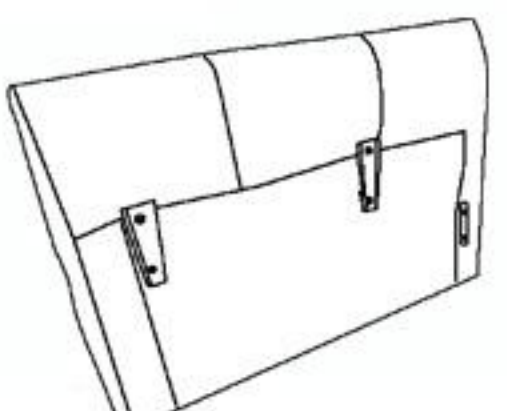
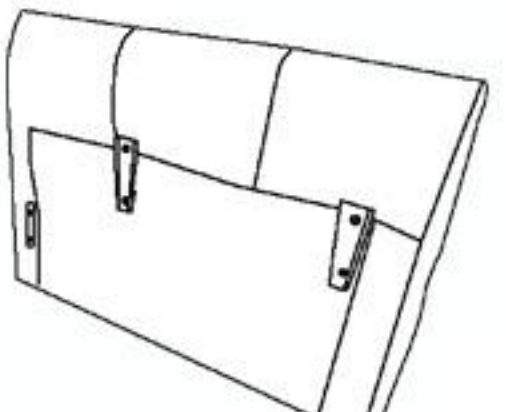






## PARTS LIST



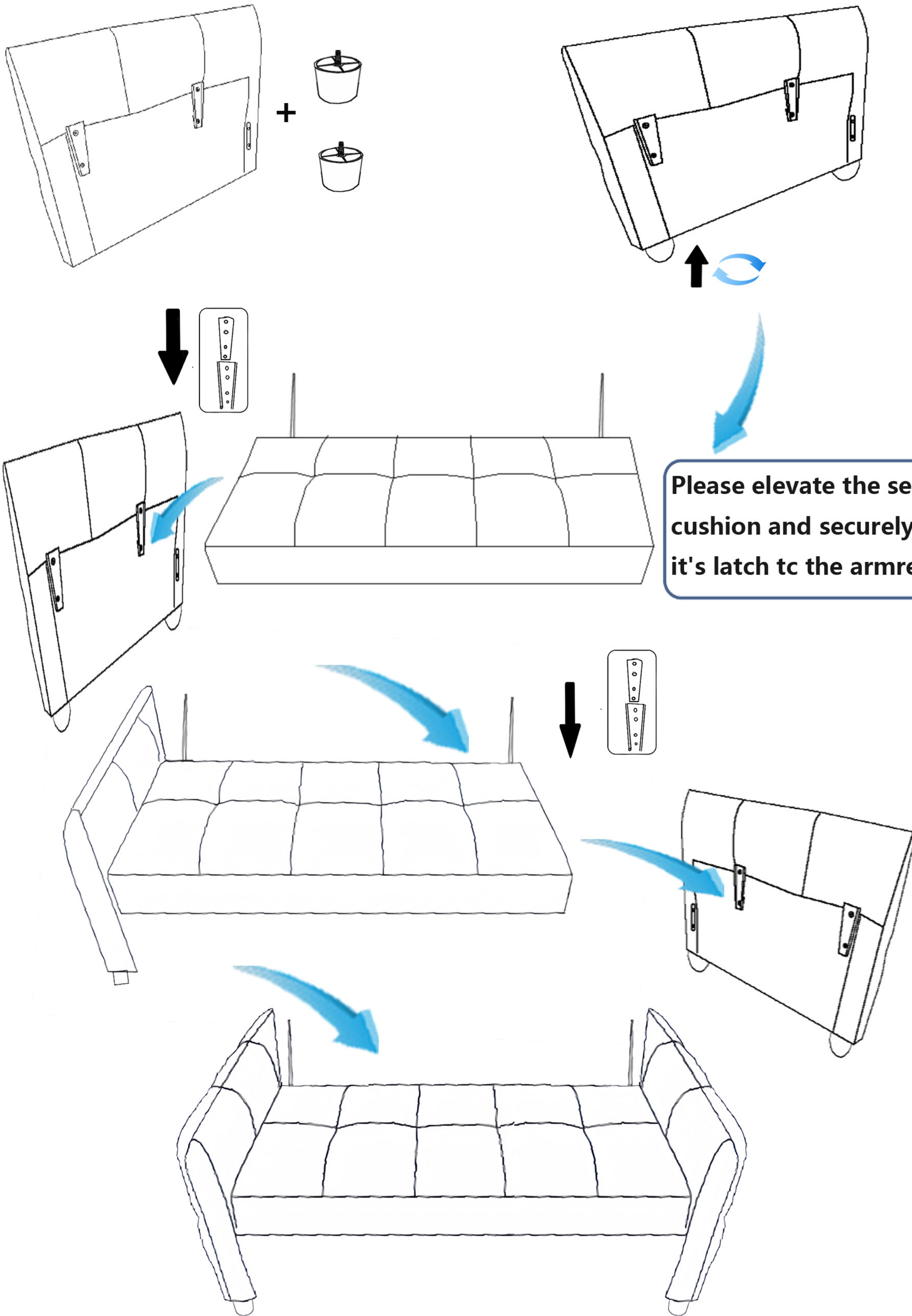
A		<b>Seat Cushion</b>	1 PC
B		<b>Back Cushion</b>	1 PC
C		<b>Back Board</b>	1 PC
D		<b>Pillow</b>	2 PCS



E		<b>Trundle Bed</b>	1 PC
F		<b>Left Armrest</b>	1 PC
G		<b>Right Armrest</b>	1 PC
H		<b>Plastic Leg</b>	4 PCS
I		<b>Guide-Rail Wheel</b>	4PCS
J		<b>Usb Power</b>	1 PC
K		<b>Allen Key</b>	1 PC

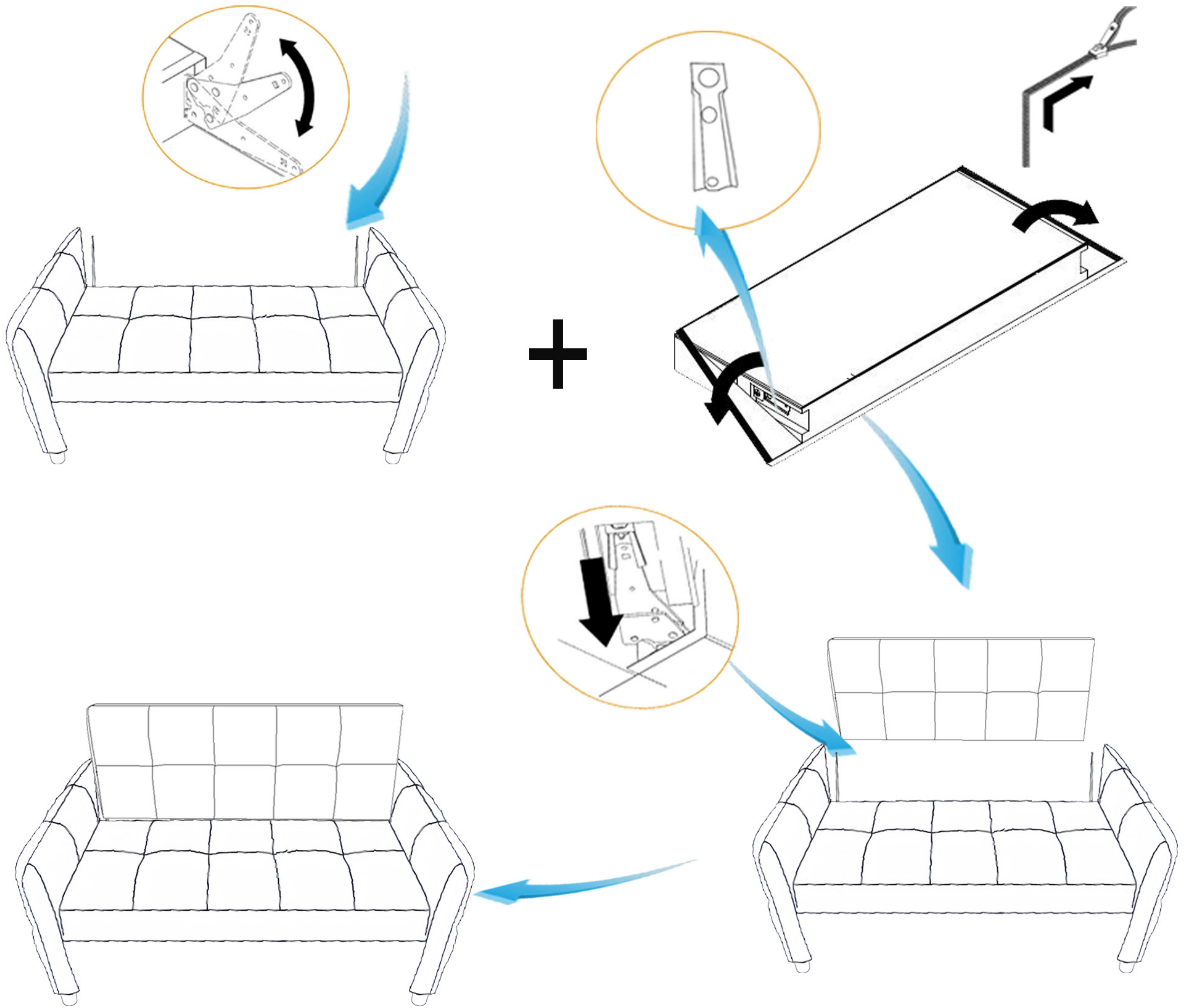
# Step 1:

Connect the armrests to the seat cushion latch after the 4 plastic legs are installed under the armrests

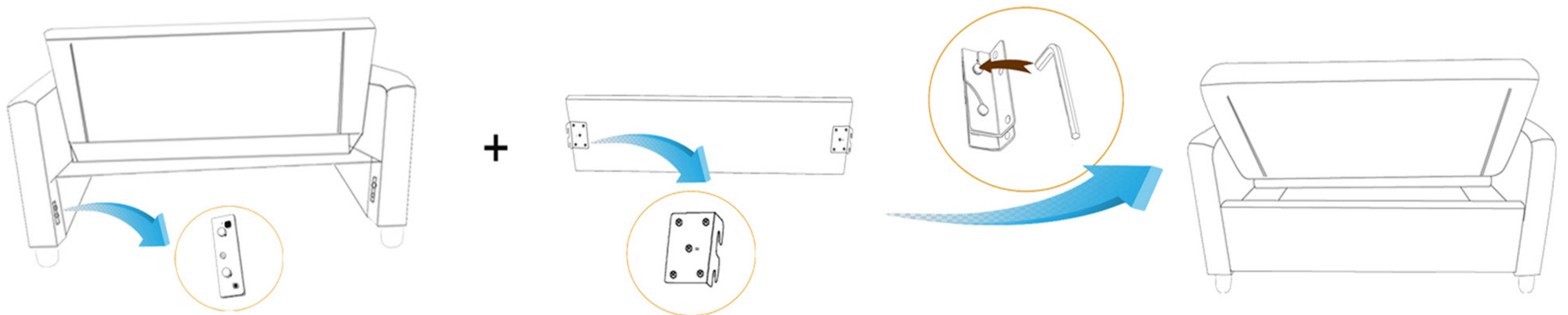


## Step 2:

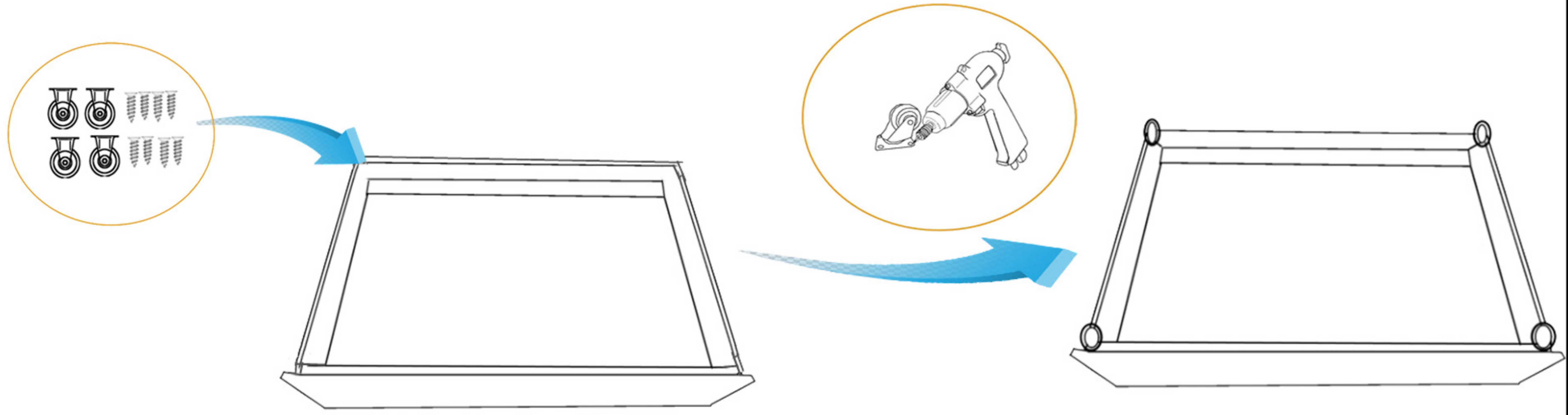
Attach the seat cushion to the back cushion.



**Step 3:** Use a wrench to fix the back board to the rear nut of the armrests.



**Step 4:** Install 4 wheels on bottom of trundle bed, please use tools to set screws.



**Step 5:** Place the trundle bed under the seat cushion, Please meticulously avoid the positioning components in the armrests, and install the mobile phone holder.

