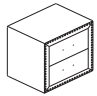






# ASSEMBLY INSTRUCTION

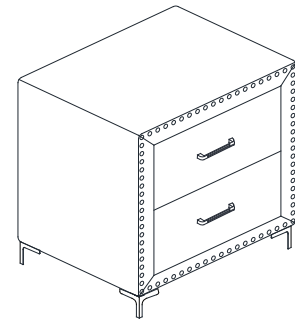
ITEM :

**BOX OF NIGHTSTAND NIGHTSTAND**

ITEM	DRAWING	DESCRIPTION	QTY
A		NIGHTSTAND	1
B		LEG	4
C		TIPPING RESTRAINT (Affix to wall behind nightstand) *Located in the top Drawer of Night Stand	1

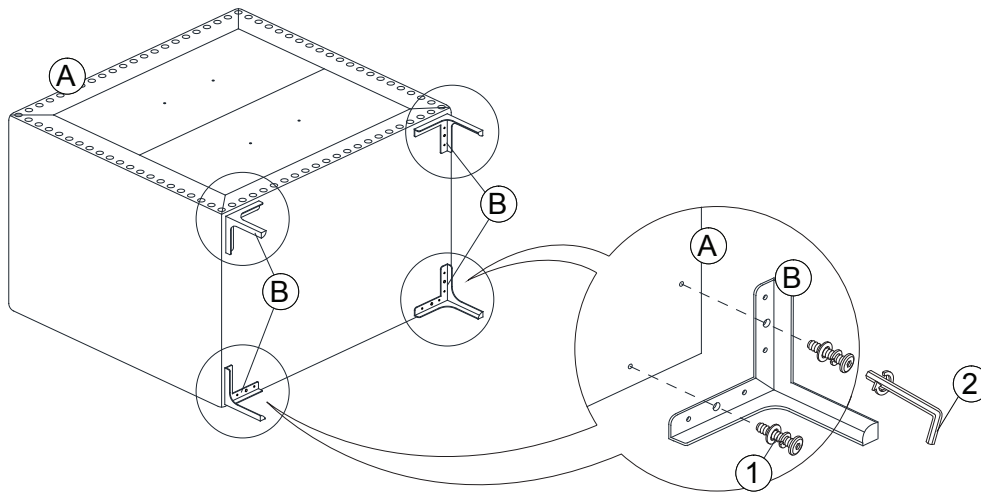
**BOX OF NIGHTSTAND HARDWARE LIST**

ITEM	DRAWING	DESCRIPTION	QTY
1		JCBC SCREW M6x20mm	8
2		L-KEY M4x65mm	1

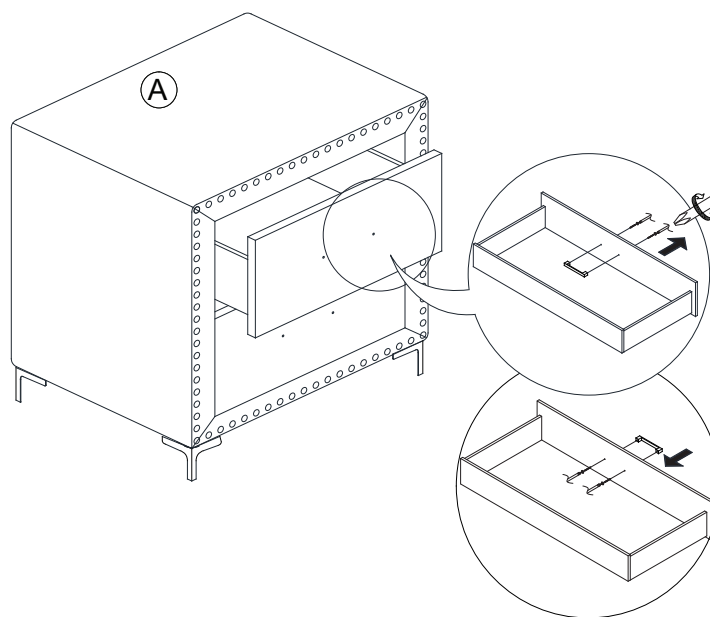


COMPLETED NIGHTSTAND ASSEMBLY

**STEP 1**



**STEP 2**



THE HARDWARE ID LOCATED IN THE PACKING ITEMS

THE ANTI TIPPING HARDWARE IS LOCATED IN THE TOP DRAWER OF NIGHT STAND.

NOTE : MUST TIGHT SCREWS PERIODICALL WITH USE SCREWS MAY BECOME LOOSE.  
CHECK TIGHNESS OF ALL SCREWS EVERY 6-8 WEEKS.

**MADE IN MALAYSIA**