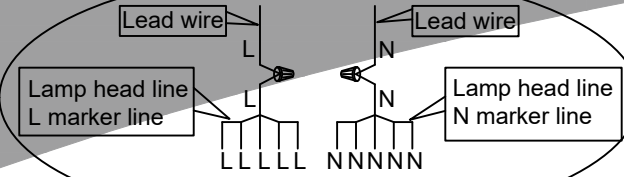
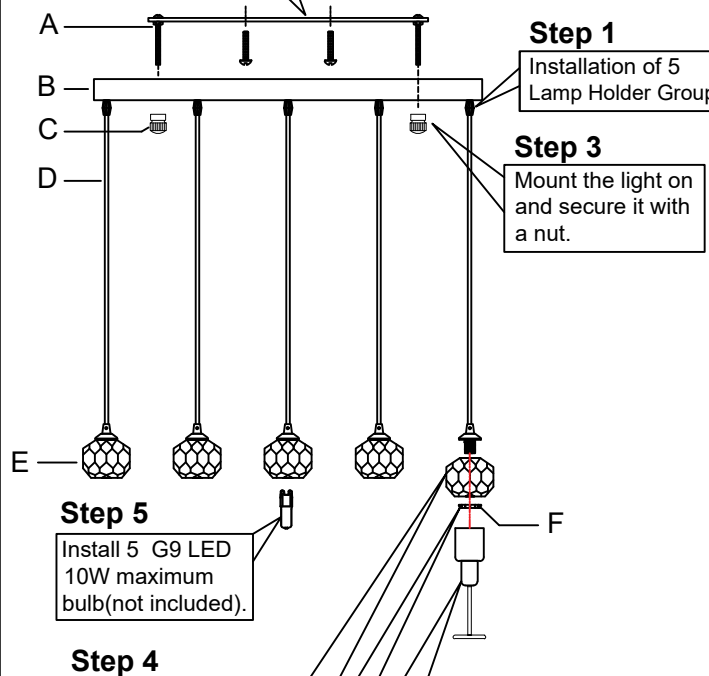


Assembly & Installation Instructions



Step 2

2A. Use the two 5/32 screws in the accessory bag to lock the crossbar to the ceiling junction box.
 2B. Connect the wires. Connect the 5 "L" labeled wires to the lead "L" labeled wires and the 5 "N" labeled wires to the lead "N" labeled wires. And the bare copper wire is the ground wire.



Step 1

Installation of 5 Lamp Holder Group

Step 3

Mount the light on and secure it with a nut.

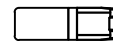
Step 5

Install 5 G9 LED 10W maximum bulb(not included).

Step 4

4A. Unscrew the lamp holder ring from the socket.
 4B. Put the crystal lampshade on the lamp holder.
 4C. There is a black long sleeve in the accessory bag.
 4D. Screw the socket ring back into the socket with a long black sleeve and tighten the crystal lampshade.

G9 LED10W Maximum Light Bulb (not included).



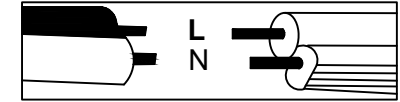
LED G9

(Rated 110-130V/60Hz, bulb LED10W maximum.)

WIRE CONNECTION DIAGRAM

Wires meeting safety standards are required to connect the electrical circuit.

CAUTION: Risk of fire



Please read all instructions carefully. Before you proceed to install, make sure that the power supply is turned off and remains off until installation is completed.

PARTS INCLUDED

Code	Part Description	QTY
A	Mounting Bracket	1 PCS
B	Iron Square Box	1 PCS
C	Decorative Nut	2 PCS
D	Lamp Holder Group	5 PCS
E	Crystal Lampshade	5 PCS
F	G9 Lock Ring	5 PCS

Warning: If any special control devices are used with this fixture, follow the instructions carefully to assure full compliance with N.E.C.requirements. If there are any questions, contact a qualified electric contractor.

Warning: California Residents Proposition 65 This product contains lead, a chemical known to the state of California to cause cancer and birth defects or other reproductive harm. Do not place the product in your mouth. Wash your hands after handling this product.

Caution: It is highly recommended to get an electrician to install this light. Please make sure to turn the electricity off at the main circuit breaker before beginning installation. All glass is fragile. Use care when handling glass component(s) and/or lamp(s).