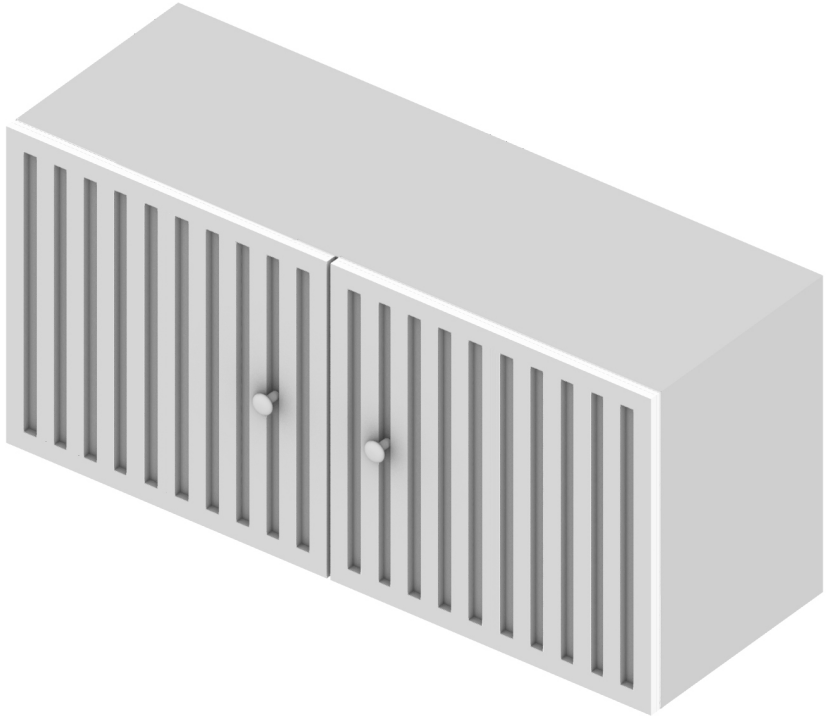


Owner Manual



15 : 00

estimated assembly



2 or more

people required

Ok, let's
get started!



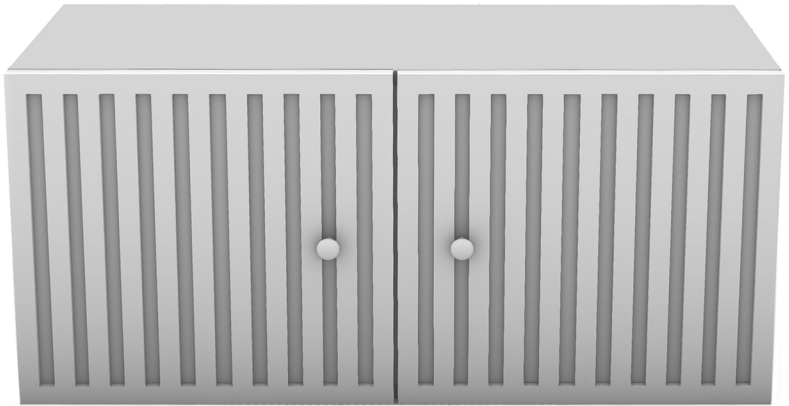
- Put on mood music!
- To prevent damage to product, use the clean side of package carton or rug as working surface.
- In the event of missing or damaged parts, delivery problems etc., please reach out to our team.
We will be happy to fix the problem!

care guide

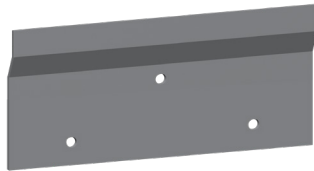
- Clean regularly with a soft and dry cloth.
- To protect finish, avoid use of abrasive cleaners.
- Wipe up spills immediately. Please!



product
parts

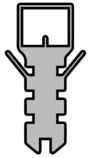


A
Floating Cabinet
x1

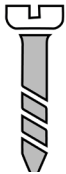


B
Cleat
x2

what's included



(C)- Wall Plug
X6



(D)- Screw
(40mm)
X6

assembly instructions

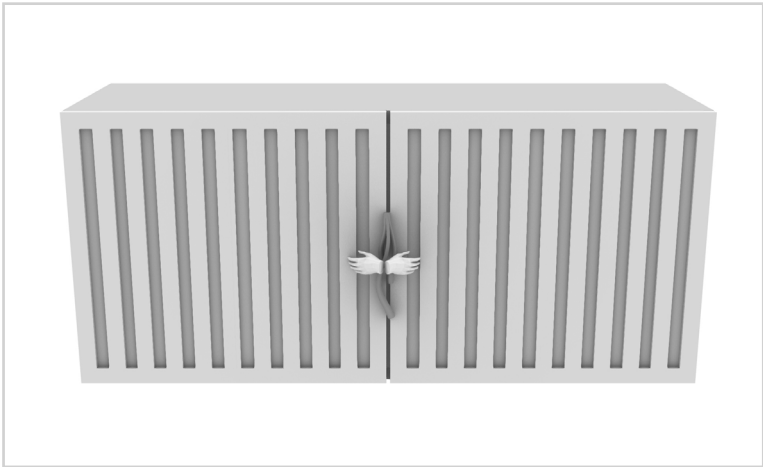
Friendly Tip: Take a deep breath going in. This may be a tricky part, but nothing too overwhelming. Just follow these steps to the T and the outcome will be worth it!



- ⓘ While assembling the product, tighten the bolts up to 50%. Once all parts are in place, only then fully tighten the bolts.

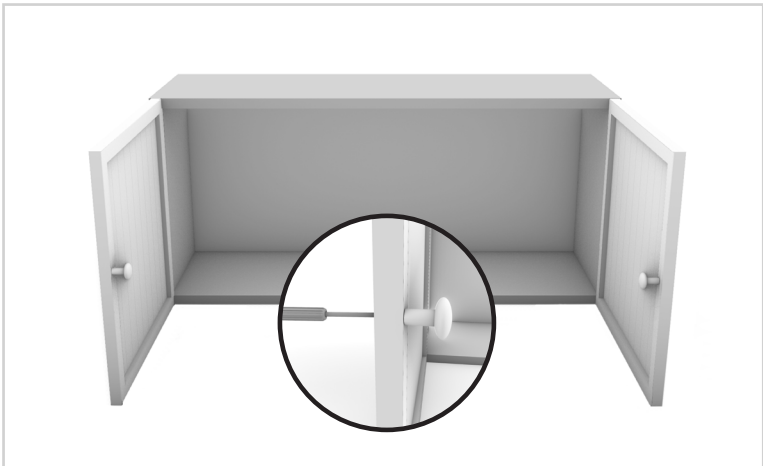
step 1:

Open the door with the ribbon.



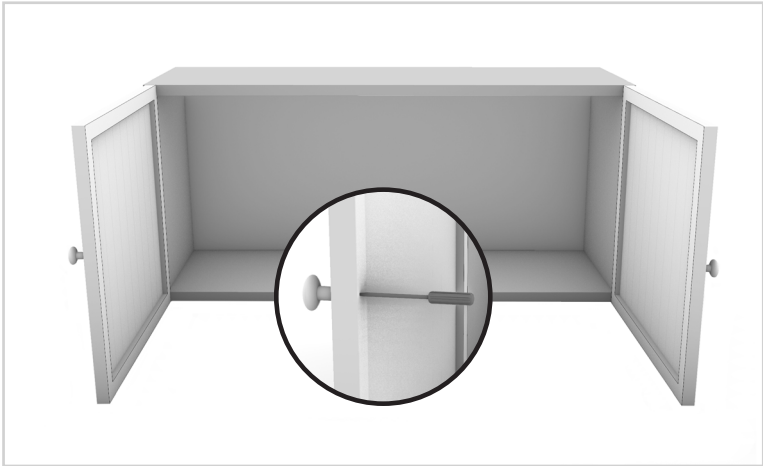
step 2:

Then, using the image below as a reference, detach the knobs on the inside of the cabinet doors using a screwdriver.



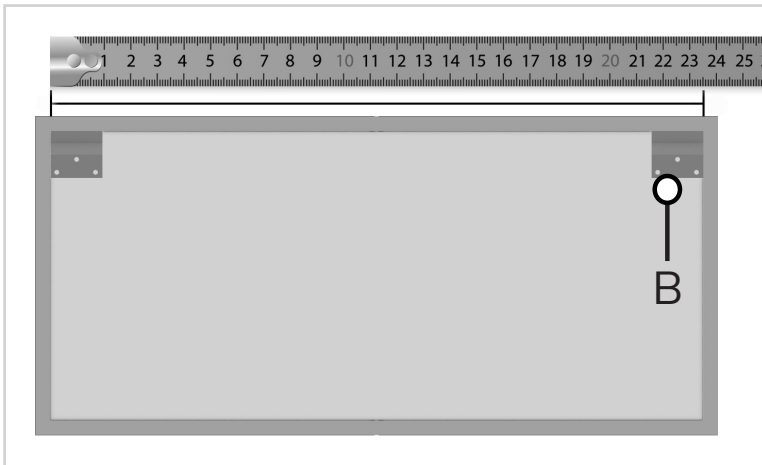
step 3:

Now, attach the knobs to the front of the door using a screwdriver.



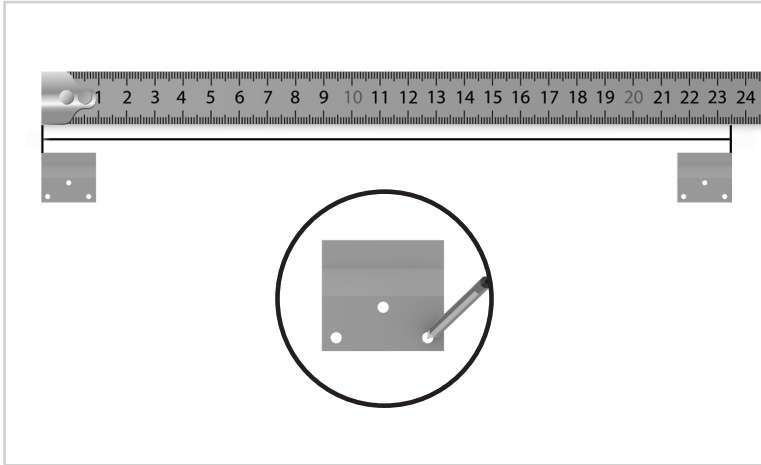
step 4:

Next, measure the distance between the two cleats (B) using a measuring tool.



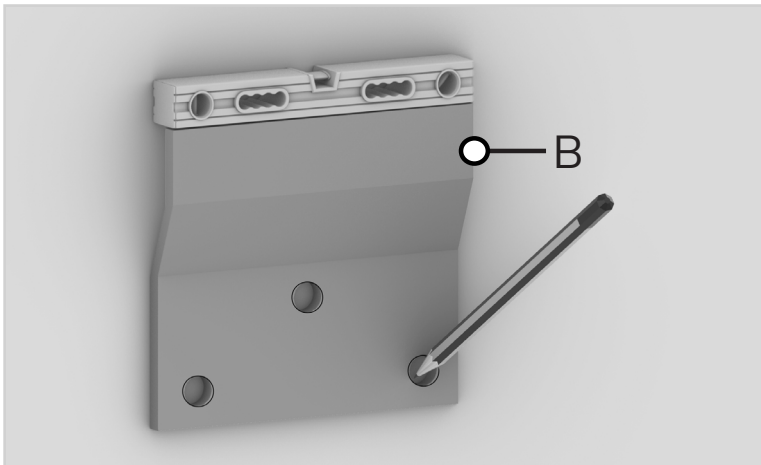
step 5:

Place the measuring tool against the line marked on the wall and make two marks on it where you want to mount the cabinet.



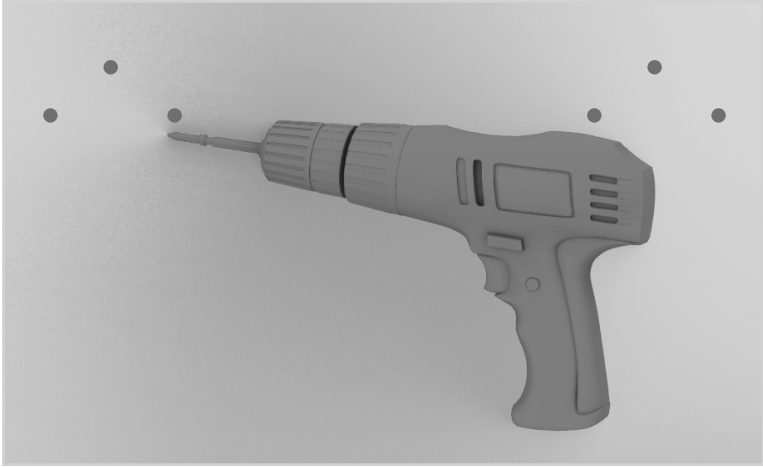
step 6:

Next, place the french cleat (B) on the wall you want to hang the cabinet (A) on and put a spirit level on it to check alignment. Adjust if needed. Once it is in a straight alignment, mark the wall through the pre-drilled holes on (B). Take this image as a reference.



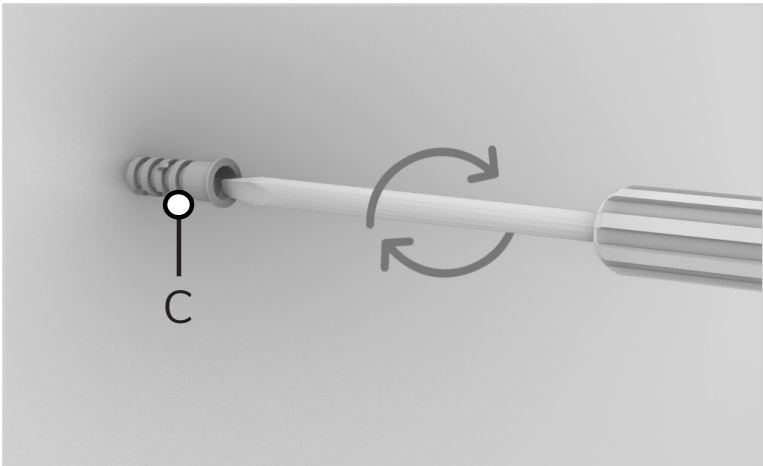
step 7:

Drill holes approx. 10 mm at the points you just marked.



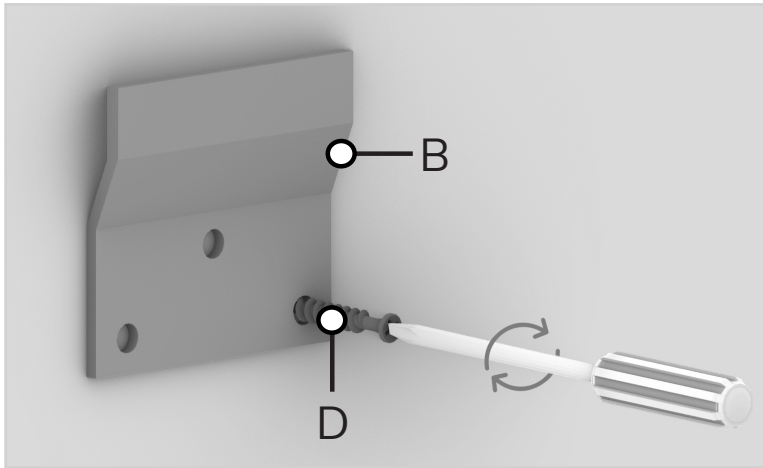
step 8:

Insert the wall plug (C) and tighten with the help of a screwdriver.



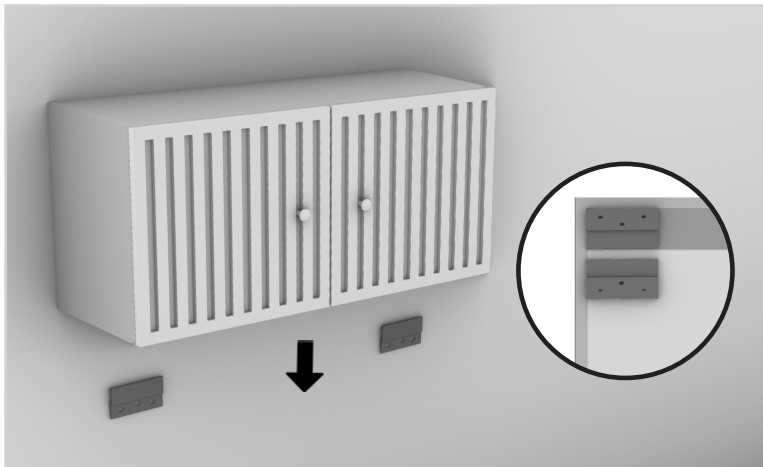
step 9:

Now, place the french cleat (B) & fix it by inserting screws (D) into the wall plugs (C). Use a screwdriver to make sure they are secure.



step 10:

Place the cabinet's bracket into the French Cleat (B) on the wall.



Voila! Your floating cabinet is now assembled and secure!