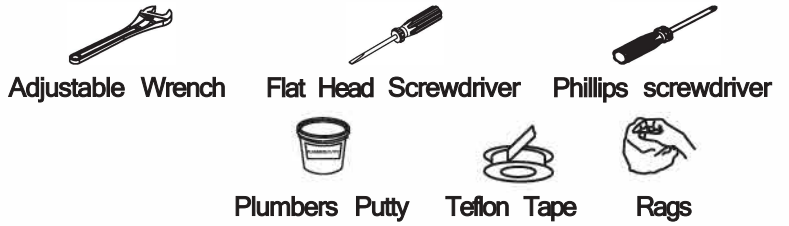


Central Brass Company, Inc.
 3325 S. Garfield Ave.
 Commerce, CA 90040
 (800) 321-8630
 www.centralbrass.com

Tools:



Model Number: 0357, 0358 Series

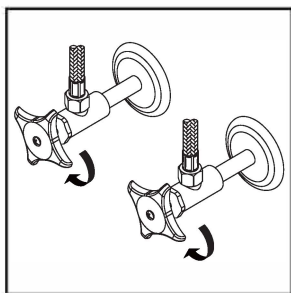
Warnings and Notes:

Check with local plumbing code requirements before installation.
 This product should be installed by a local listed plumber.
 Do not use plumbers putty on threads.

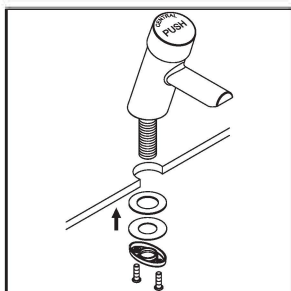


Installation Steps:

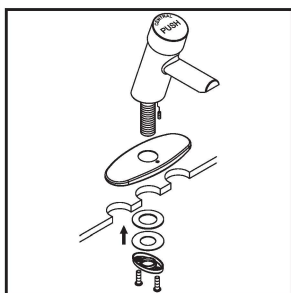
Metering Faucet



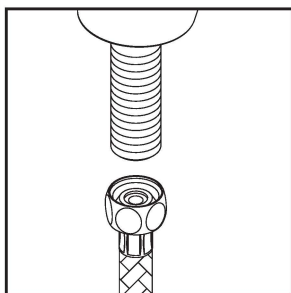
- (1) - Shut off the water supply to the faucet.
 - Remove the old faucet.
 - Clean the mounting surface thoroughly in preparation for the new faucet.



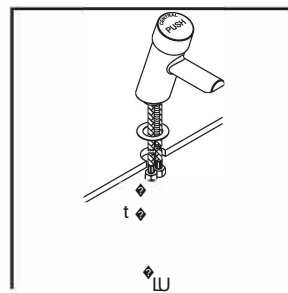
- (2a) **For 0357 Series 1-hole installation:**
 - Apply a thin, uniform layer of plumber's putty to the underside of the faucet.
 - Place the faucet shank through the mounting hole.
 - From underneath of the sink hand-tighten locknut to the faucet. Position faucet to desired location from top.
 - Utilizing a Phillips Screwdriver, tighten the two screws on the lock nut.



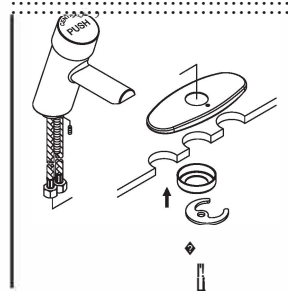
- (2b) **For 0357 Series 3-hole installation:**
 - Tighten the set screw to the faucet from underneath.
 - Align the faucet to the screw hole position.
 - Apply plumber's putty under the base gasket.
 - From underneath of the sink hand-tighten locknut to the faucet. Position faucet to desired location from top.
 - Utilizing a Phillips Screwdriver, tighten the two screws on the lock nut.



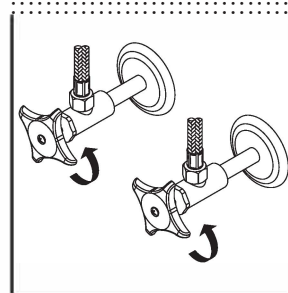
- (2c) When using stainless steel braided faucet supply hose:
 - Ensure one end of the supply hose has a 1/2" female IPS connection.
 - Confirm the other end of the supply hose matches the thread on the water supply valve under your sink.
 - Refer to the manufacturer's installation instructions for each hose and carefully follow them.



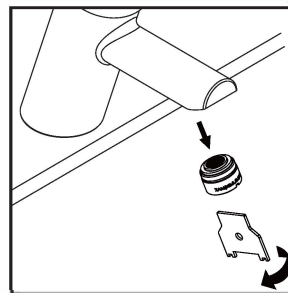
- (3a) **For 0358 Series 1-hole installation:**
 - Locate the 2-inch thread bolt.
 - Using a Phillips screwdriver, secure the post to the faucet.
 - Place the metal washer through the faucet supply hose.
 - Insert the faucet inlet supply hoses through the mounting hole.
 - From underneath the sink, slide the steel ring, rubber washer, and steel plate through the hoses.
 - Thread and hand tighten the mounting post nut to secure.



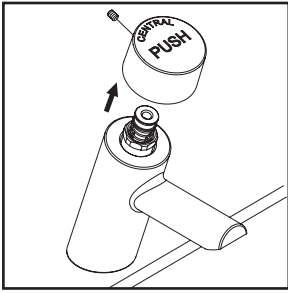
- (3b) **For 0358 Series 3-hole installation:**
 - Tighten the set screw to the faucet from underneath.
 - Slide the inlet supply hose through the deck plate.
 - Align the faucet to the screw hole position.
 - Insert the faucet inlet supply hoses through the mounting hole.
 - From underneath the sink, slide the steel ring, rubber washer, and steel plate through the hoses.
 - Thread and hand tighten the mounting post nut to secure.



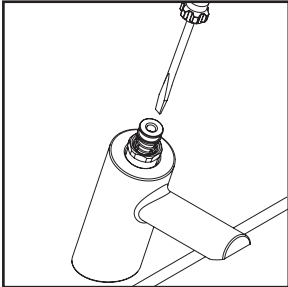
- (3c) - Attach the hot and cold inlet supply hoses to the supply stops, employing a 3/8" male to 1/2" female adapter for 1/2" connections during installation.
 Please be aware that adapters are discretionary and are not included with the faucet.
 - Once the connection is established, ensure to activate both side supply stops.



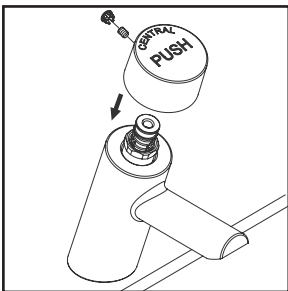
- (4) **Crucial Note:** Upon completion of the installation process, it is imperative to remove the aerator. Subsequently, turn on the water supplies and depress the handle to allow water to flow for a minimum duration of one minute. While the water is running, thoroughly inspect for any signs of leaks. Following this inspection, turn off the water supply and reattach the aerator securely.



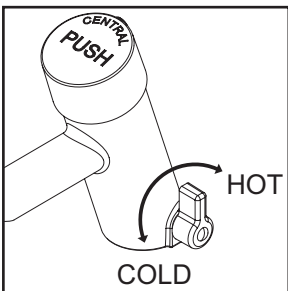
(5) The slow close cartridge comes from the factory with a preset timing of 10 seconds at 60 PSI. However, variations in inlet water pressure and water temperature may affect this timing. If adjustments to the timing are necessary, remove the handle by loosening the supplied Allen L-wrench.



(6) Using a flat head screwdriver, adjust the timing as follows:
- To decrease the timing, turn the screw counter-clockwise.
- To increase the timing, turn the screw clockwise.
The timing can be adjusted within a range of 0 to 60 seconds, depending on the inlet pressure and water temperature.



(7) Once you have achieved the desired timing adjustment, reinstall the handle by securely tightening the Allen L-wrench.

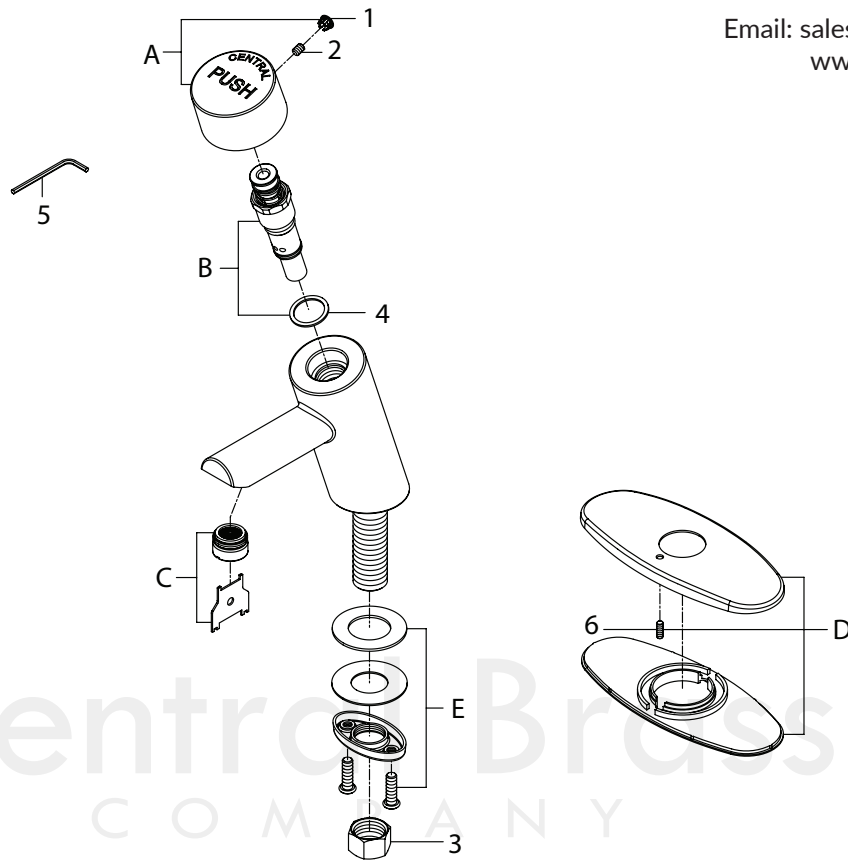


(8) **For 0358 Series**
To adjust the temperature lever:
- To increase the temperature, adjust the lever clockwise.
- To decrease the temperature, adjust the lever counter clockwise.

MODEL# 0357, 0357X

0357C
0357H
0357P

Commerce, CA 90040
Fax: 323.888.9515
Email: sales@centralbrass.com
www.centralbrass.com



ITEM#	DESCRIPTION	ITEM#	DESCRIPTIONw
A CS-13008	Plain Push Handle	1 X-4900044	Hole Cover
B CS-39004	Slow-Close Stem Assembly	2 X-4900002	HDL 3/32" Allen Screw
C OP-490066	15/16" Male Aerator 1.2 GPM	3 X4015	Brass Coupling Nut 4/PK
D CS-43016	6" Deck Plate	4 X1028-Y	Nylon Gasket For Stem 25/PK
E CS-59001	Mounting Kit With Screw and Flange	5 170-WA	3/32" Allen Wrench

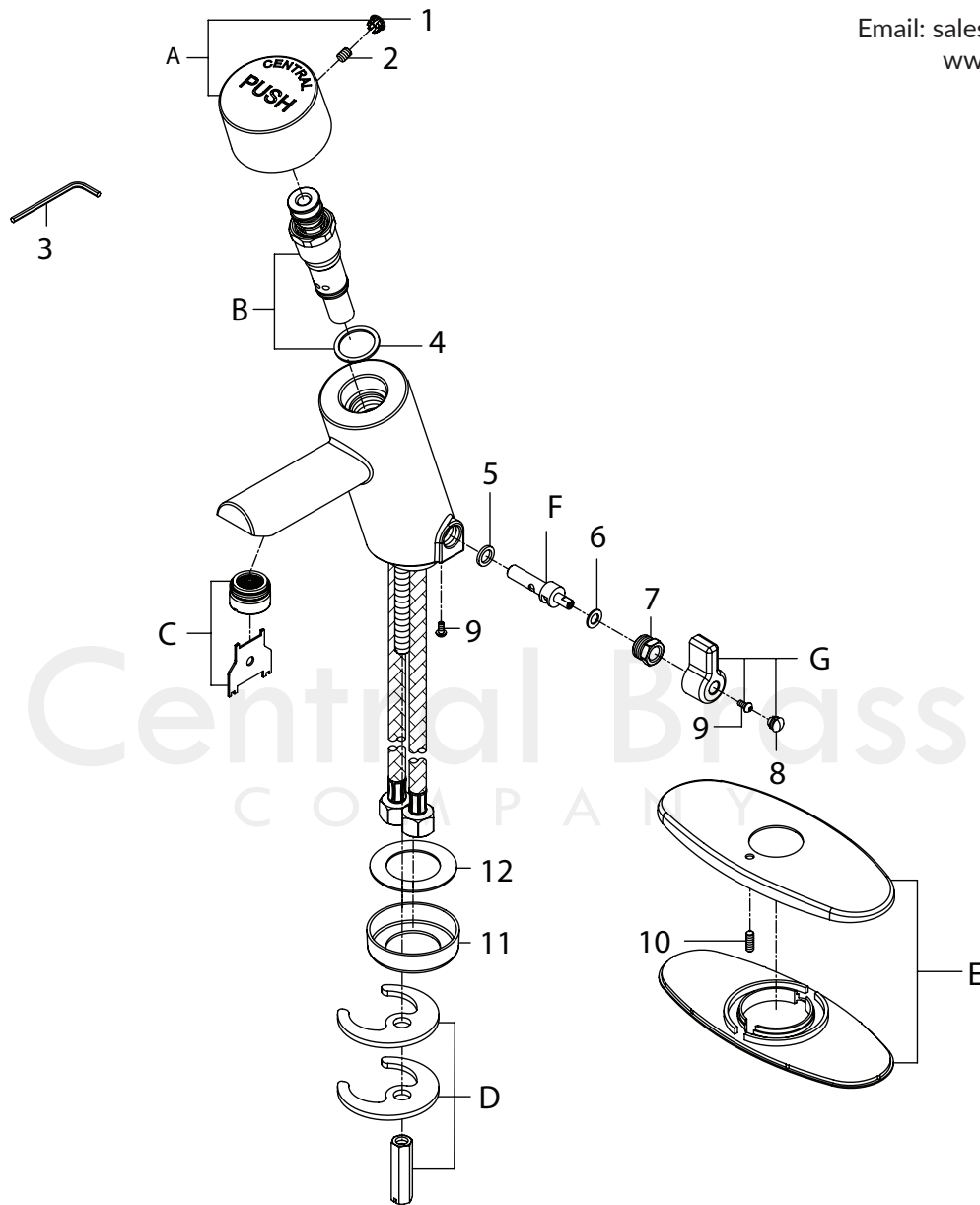
MODEL# 0358

Commerce, CA 90040

Fax: 323.888.9515

Email: sales@centralbrass.com

www.centralbrass.com



ITEM#	DESCRIPTION	ITEM#	DESCRIPTIONw
A	CS-13008 Plain Push Handle	4	X1028-Y Nylon Gasket For Stem 25/PK
B	CS-39004 Slow-Close Stem Assembly	5	X1090-HN Nylon Gasket 10/PK
C	OP-490066 15/16" Male Aerator 1.2 GPM	6	X279-D Brass Washer 10/PK
D	X-5300013 Mounting Kit	7	PF-1090-J Regulator Cap
E	CS-43016 6" Deck Plate	8	OP-490002 Lever Hole Cover
F	CS-33001 Temperature Adj. Stem	9	X170-K Screw RD HD Slot
G	CS-73002 Temperature Adj. Lever	10	X-5700001 5/64" Allen Screw
1	X-4900044 Hole Cover	11	CS-53008 Steel Ring
2	X-4900002 3/32" Allen Screw	12	CS-53007 Steel Washer
3	170-WA 3/32" Allen Wrench		