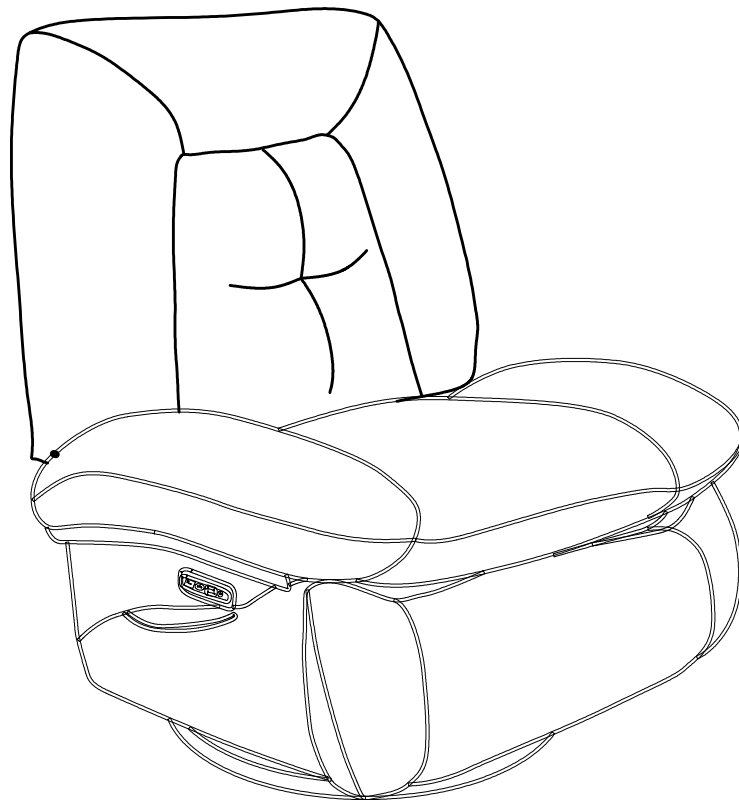
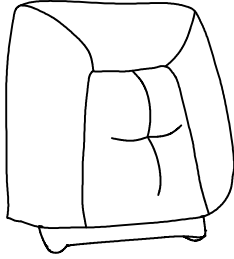


Recliner Assembly Instructions



PARTS AND ACCESSORIES

Avoid using sharp objects such as a knife to cut open packing as you may accidentally damage the upholstery.

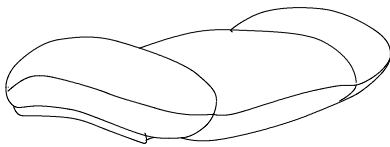


The backrest you received has been vacuum-packed, Open the plastic bag and take out the backrest, make it recovery. knead it, make it more fluffy.

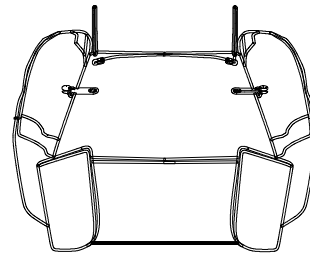
① Back Cushion * 1pc



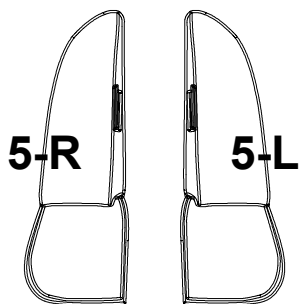
② Back Frame* 1pc



③ Seat Cushion * 1pc



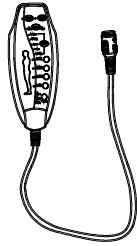
④ Seat Frame* 1pc



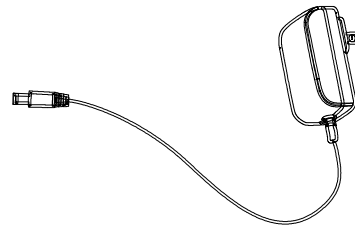
⑤ Backrest Ear Part * 2pcs



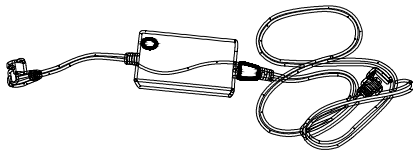
⑥ Footrest * 1pc



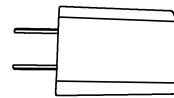
Ⓐ Remote Control *1pc



Ⓑ Power Cord * 1pc

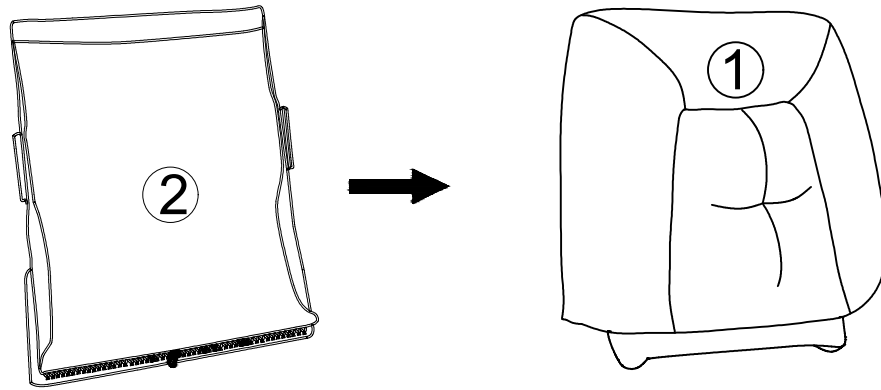


Ⓒ Power Source * 1pc

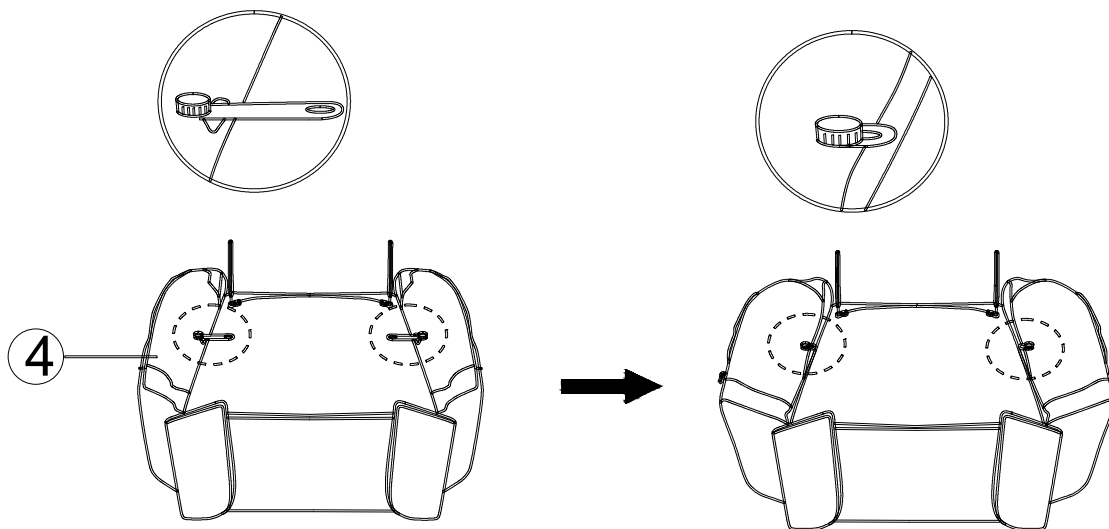


Ⓓ USB plug *1pc

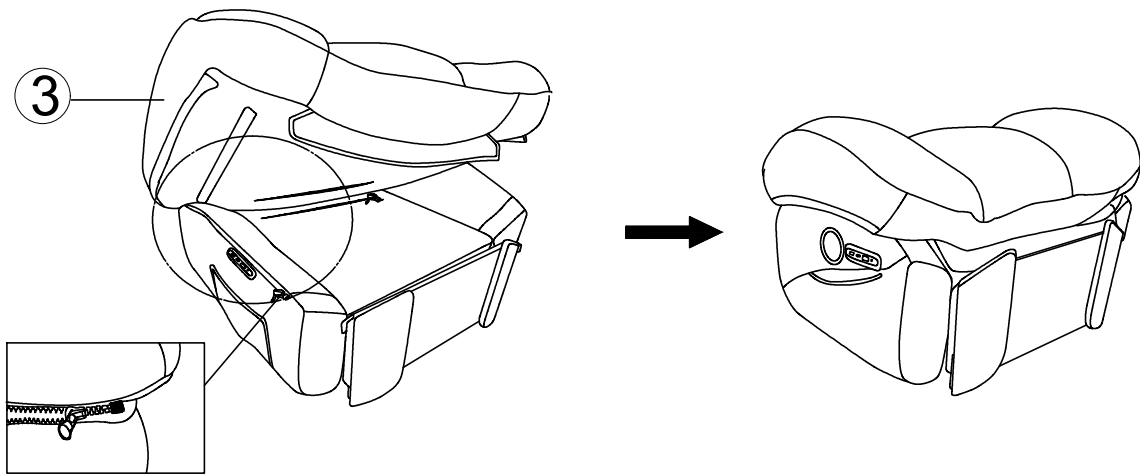
Please check and ensure all the things are in the package. You can contact us if something is not included. We will reply within 24 hours and try our best to solve it.



1. Align, stick and zip the Beat Cushion (Part 1) with Back Frame (Part 2).
-



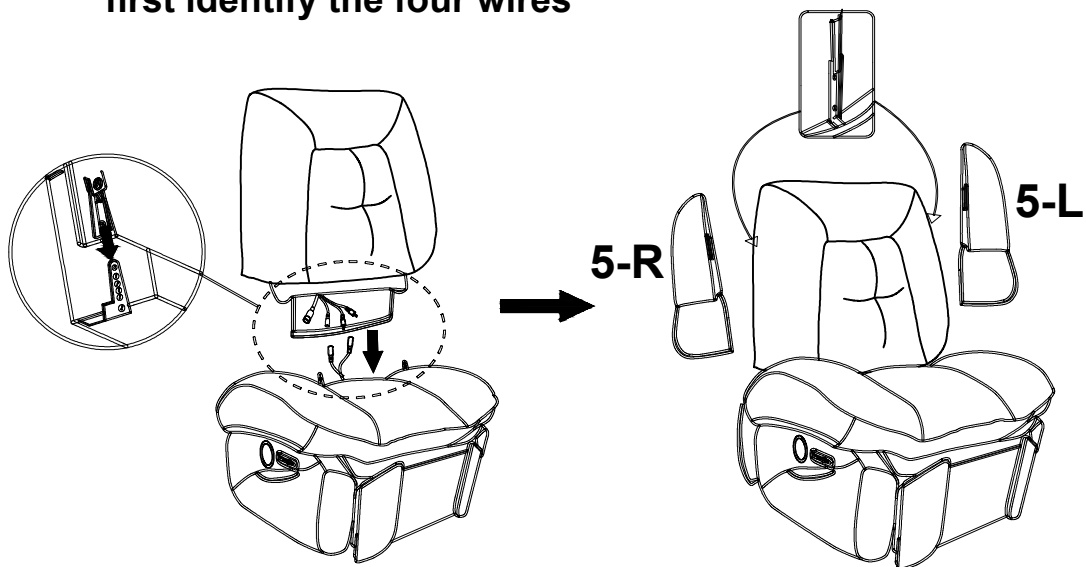
2. Insert the 5 and 6 armrests into the seat 4.



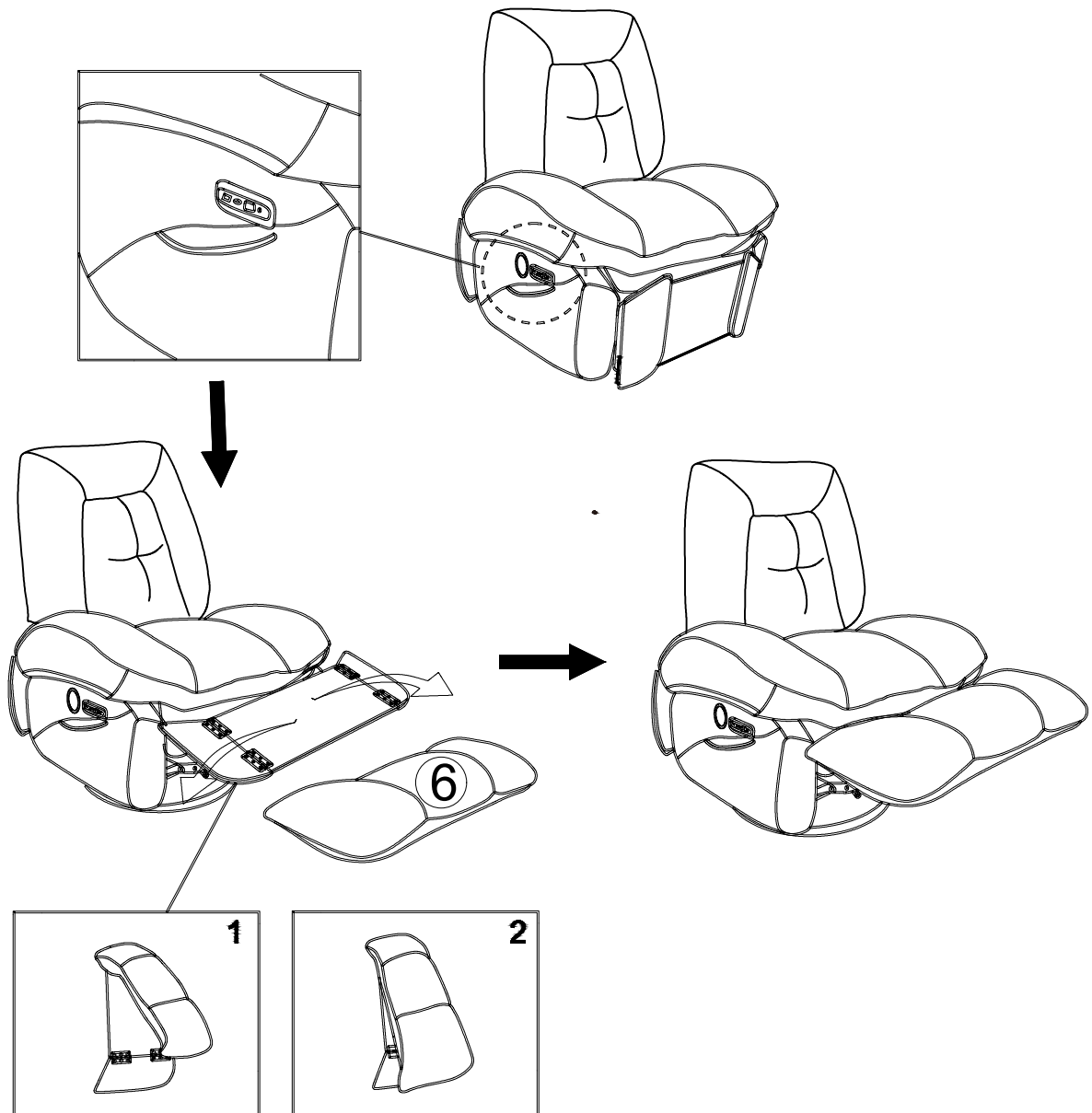
- 3.** Align, stick and zip the Seat Cushion (Part 3) with Seat Frame (Part 4).

- 4.** Insert Back Frame metal bolts to the Seat Frame (Part 4) as shown below. Ensure it is correctly in place.

Align the backrest ear parts (part 5) to assemble backrest
When installing the backrest.
first identify the four wires



- 5.** Align, stick and zip the Seat Cushion (Part 3) with Seat Frame (Part 4).

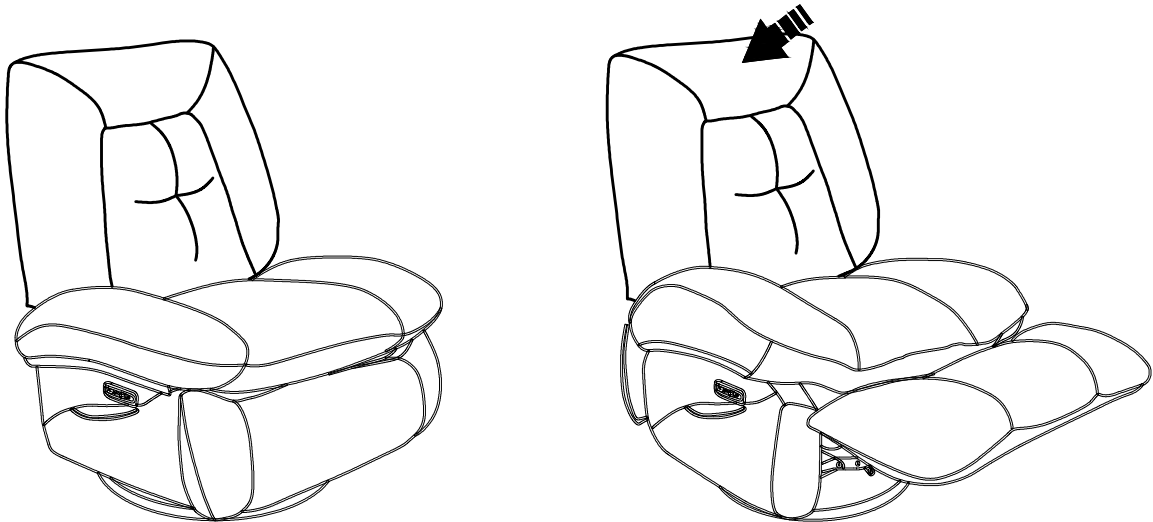


- 6.** Press the front button to retract the back button to open the middle of the TYPEC charging port, the back of the USB charging port, the installation direction is the key in front of the sofa

RECLINE & FOOTREST OPERATING

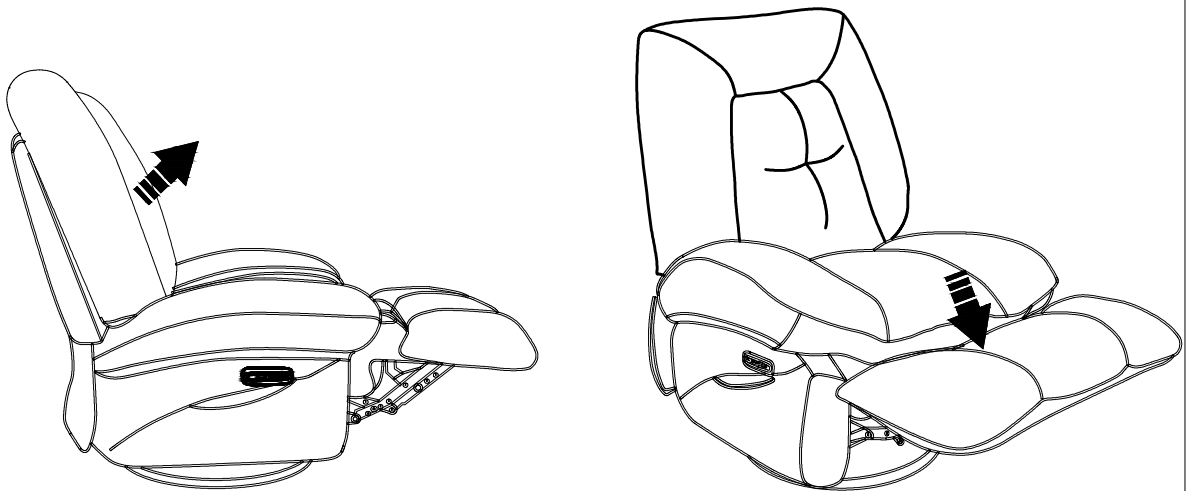
A. How To Recline

Press the front button of the manual controller for along time until the desired angle can be reached. Release the button and the tilt state can be fixed



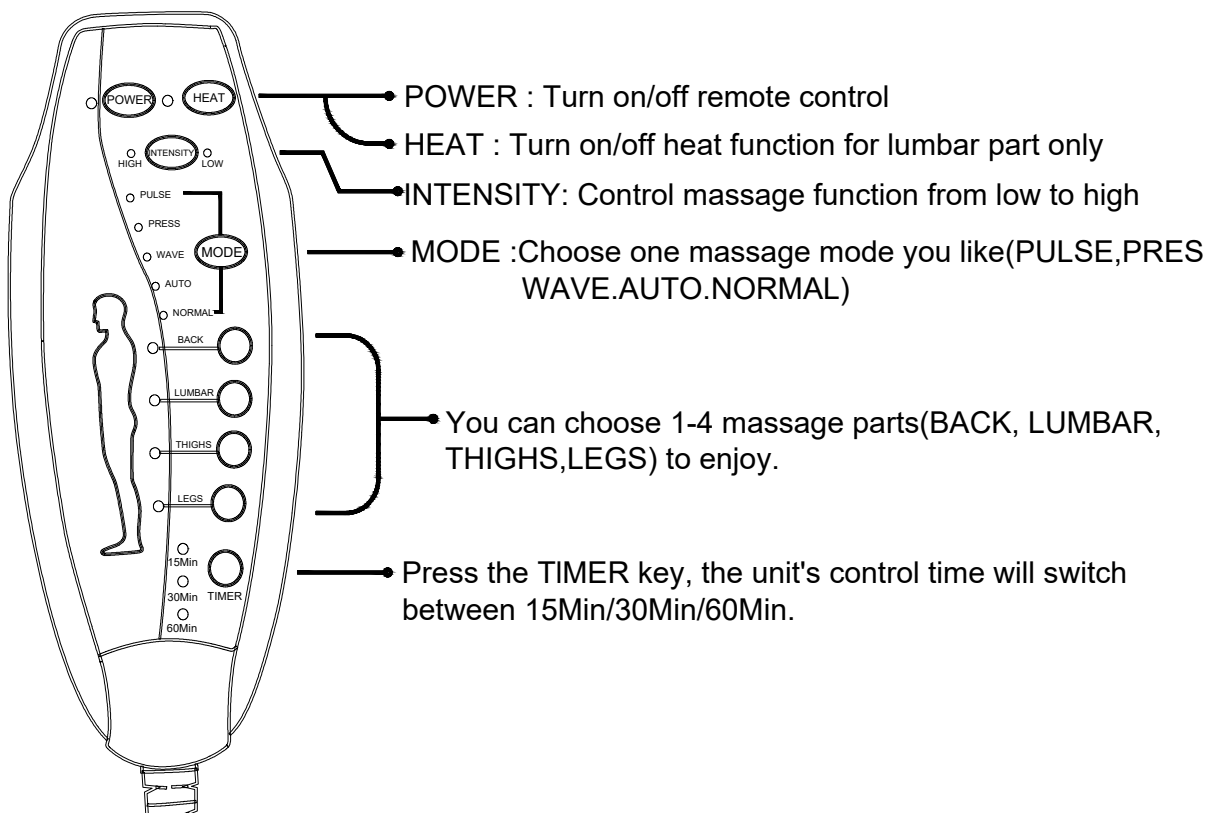
B. How To get Footrest Pushed Down

Long press the front button of the manual controller, you can retract the sofa initial tilt state, hold down the button until you can achieve the desired angle, release the button tilt state can be fixed



C. Massage operation

INTENSITY: Change intensity (HIGH or LOW) during all modes.



We recommend that the unit be used only for a few minutes initially, to allow your body to get used to the massage sensation. Gradually increase the length of time you use the massage function, over the first few periods of use. Should you experience any adverse reactions, stop using immediately and consult your medical practitioner.

Maximum music output power	3W*2	frequency response	200HZ-15KHZ
working voltage	DC4.2V-DC5.25V/1A	Distortion	THD=1% F=1khz R.L=8Ω 340mw
Adaptor input voltage	AC110V-240V/50HZ-60HZ	Adapter output voltage	DC5V/+5%/1A
Music input mode	Bluetooth connection	Bluetooth version	DC5V/+5%/1A
Bluetooth connection	Barrier free 10M	Separation of left and rightchannels	R/L=65db

Instructions for use:

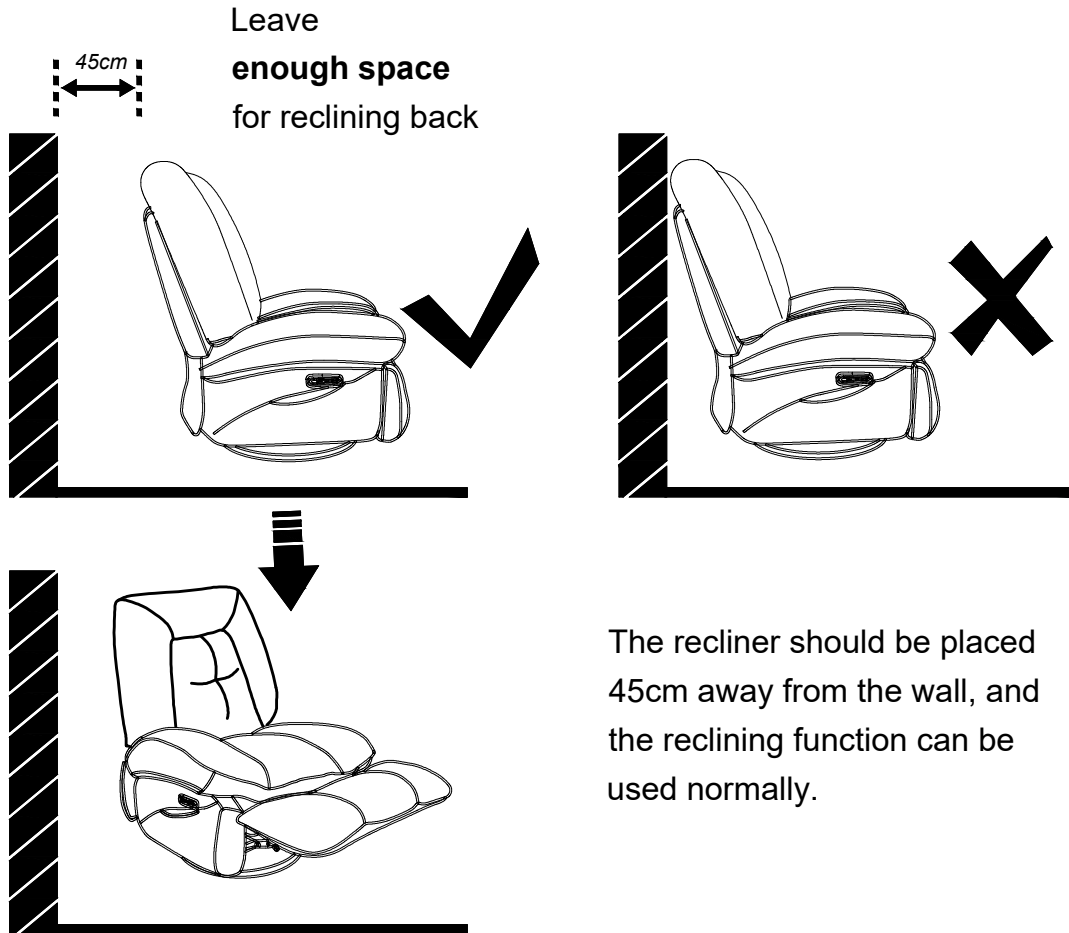
Connect the audio device to Bluetooth to play songs

- 1、 Firstly, plug in an external power source, usually a 5V power adapter, power bank, or USB port on the computer host. After power on, Bluetooth will automatically start and a prompt sound will be heard. Wait for 5-8 seconds. The word "TJ Lucky" will appear on the phone or sound source device. Select to connect and you will hear a "ding dong" sound, indicating that Bluetooth has been successfully connected. Then, open the player in the phone or sound source device to listen to wonderful songs.
- 2、 After turning off the power, it is necessary to use it again by simply turning on the Bluetooth of the phone or audio device. After the audio is powered on, the Bluetooth will automatically search for the last connected device by default. If the device is turned on, the Bluetooth will automatically connect, otherwise manual connection is required.

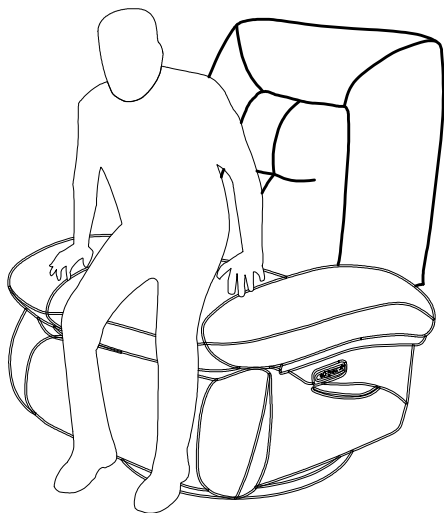
Notes:

- 1、 This product is strictly prohibited from being thrown due to its attention to rain and dust prevention.
- 2、 Maintenance must be installed and debugged by professional technicians, and unauthorized disassembly and assembly are strictly prohibited to avoid accidents,

USAGE



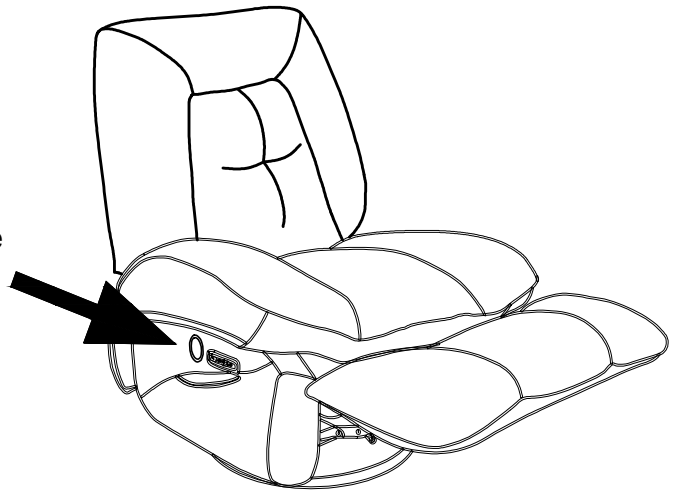
PROPER USAGE



Steps to safely stand up from your Recliner Chair

1. Store the remote control @ safely in the seat's side pocket
2. Plant feet firmly on the ground
3. Evenly distribute weight on both arms of the chair
4. Slowly stand up from upright position

* Remember to store remote control safely in the seat's side pocket when it is not in use.



WARRANTY

So glad you have completed the assembly and can enjoy it. If you are satisfied with our products, thank you for showing your favored massage recliner to your around. Our products come with a 2-month warranty, you can feel free to contact us at any time.

Method:

1. If you choose Amazon, going to your Amazon order detail page, Order>sold by>contact seller (guaranteed response within 24 hours)

AFTER-SALE POLICY

1. For return reason: Wrong purchase, bought by mistake, no longer needed, doesn't meet expectation, a size smaller than expectation, customer need to cover the return shipping fee.
2. For cancel order: Customer needs to pay for shipping fee and carrier handle fee if the item has been shipped out.
3. For change address: Customer needs to pay for extra shipping fee and carrier handle fee if the item has been shipped out.
4. Customer Service: Any problem with the product or shipping issue, please feel free to contact us, we will try our best to serve and help.

Dear Customer,

Thank you for choosing us. For safe use, please read this manual before installation, and keep it for after use. Please feel free to email us if you have any concerns about our products. We'll reply within 24 hours.

The following are the things you need to pay attention to so that we can provide you with services when you encounter problems during the installation and use of the product:

When the product is damaged due to courier problems, please contact our customer service in time for verification.

- We will rectify the issue as soon as possible;
- We give a 60-day quality assurance;
- We provide a 7-day no-reason return service (note that the returned product will not affect the secondary sales);

We offer product explanations, installation instructions, product maintenance and maintenance methods. If you feel satisfied with our product and service,

- Please set our store as your favorites;
- Please recommend our products to your friends;
- Please and leave us your purchase experience in our store or product page.

Feedback or reviews from you will greatly help us offer better services to players around the world.

Best regards

Avoid using sharp objects such as a knife to cut open packing as you may accidentally damage the upholstery.