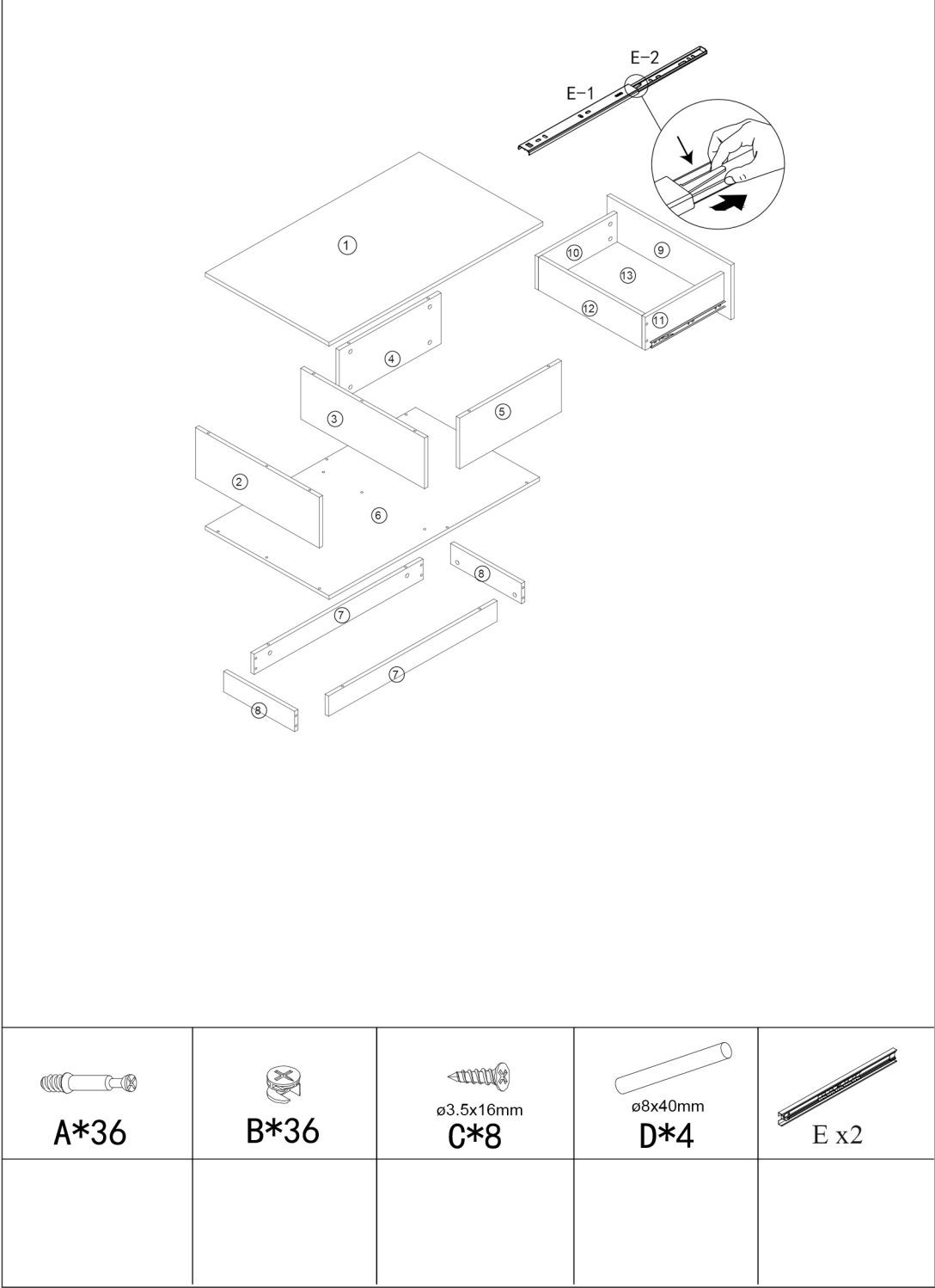
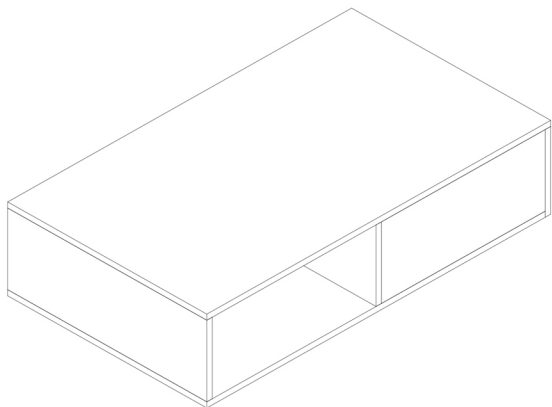
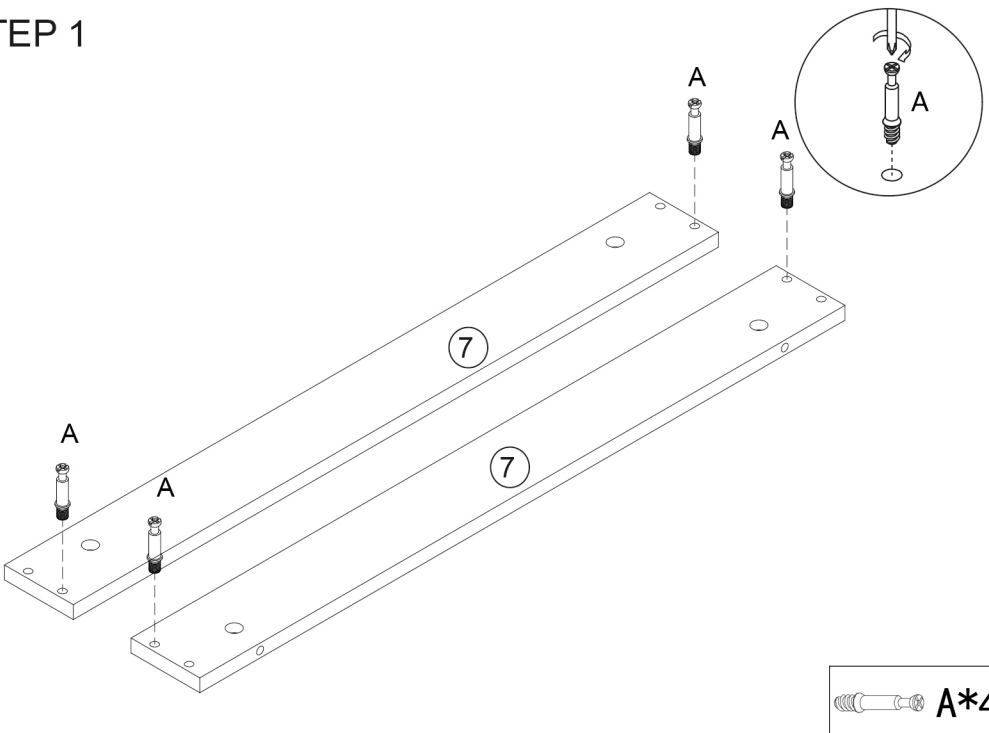


ASSEMBLY INSTRUCTION

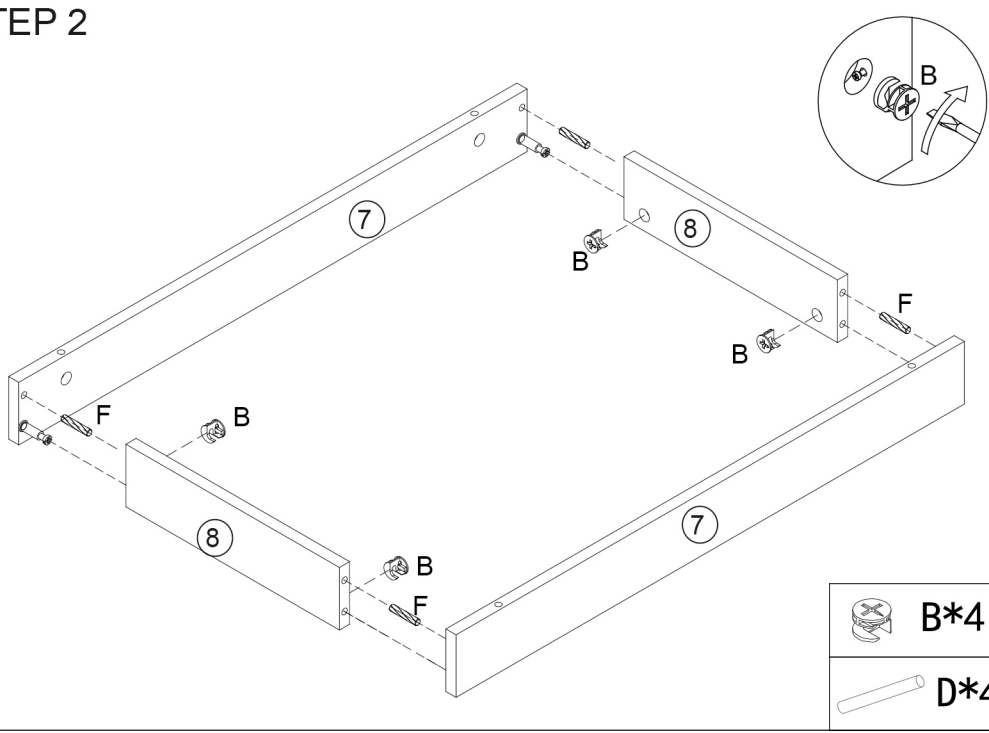
- Please follow the instructions to assemble the items correctly.
- Please ensure the safety of the glass when assembling.
- Do not make the screws too loose or too tight.
- As shown in the figure, Insert the screw into the hole.
The arrow in the picture, Then rotate 90° or 180° clockwise.
- The accessory bag contains some small accessories, which should be kept away from children.
- Ensure that the product enjoys a 90-day product warranty.
If you have any questions, Help or support, please contact product customer service. We will further send you effective information and related solutions.
- The remaining parts are spare parts.



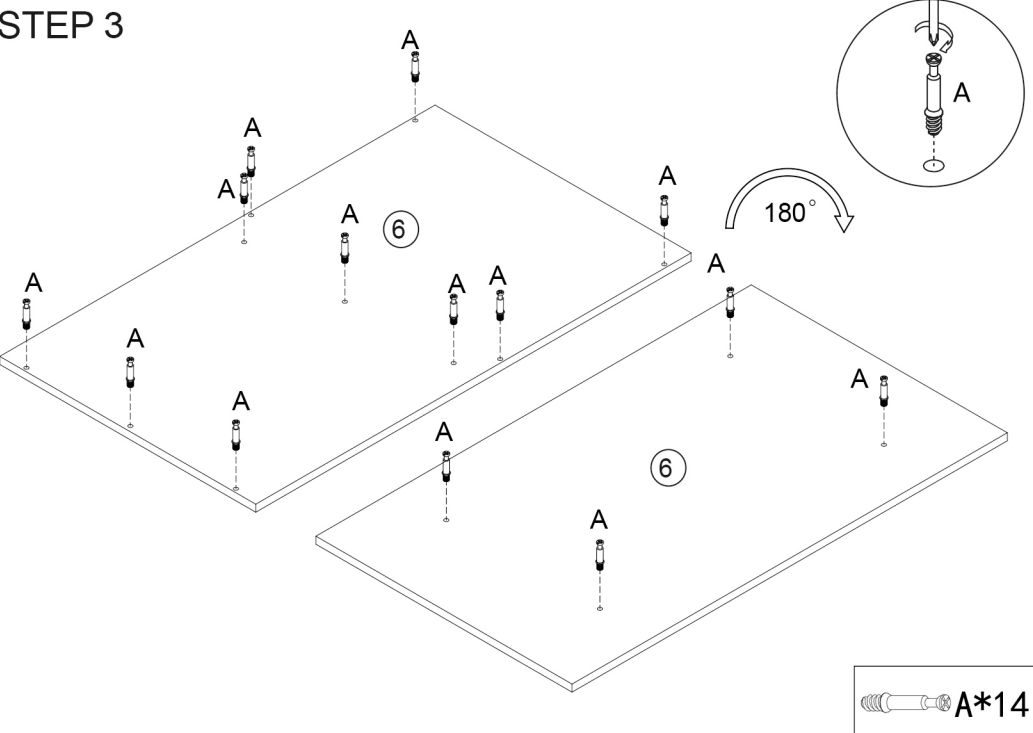
STEP 1



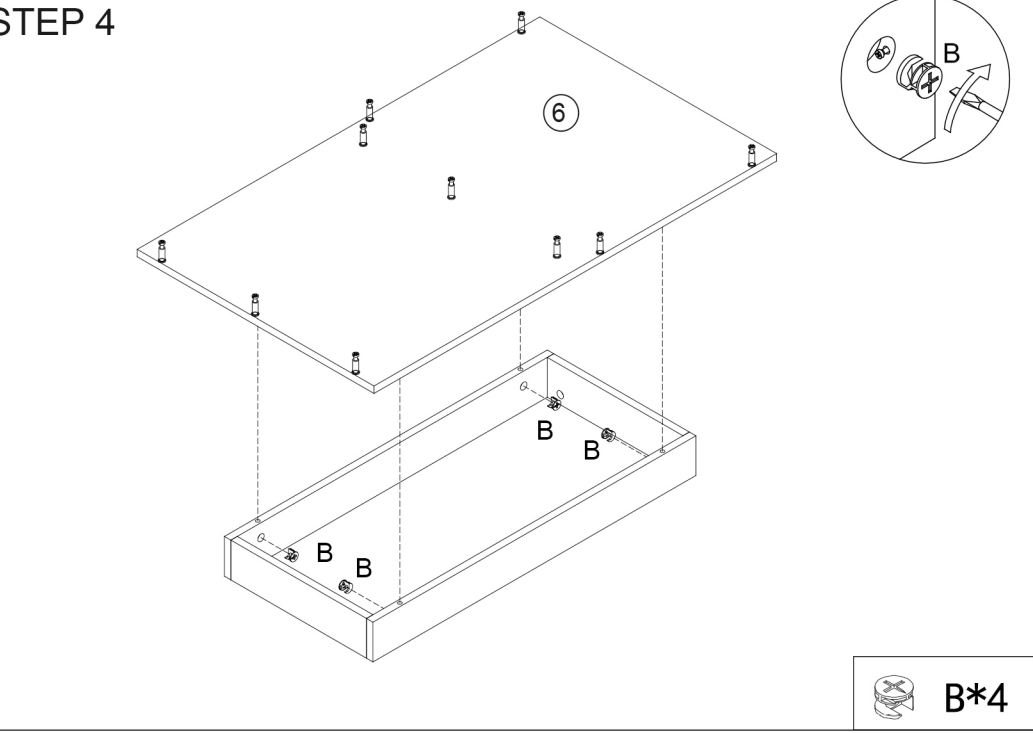
STEP 2



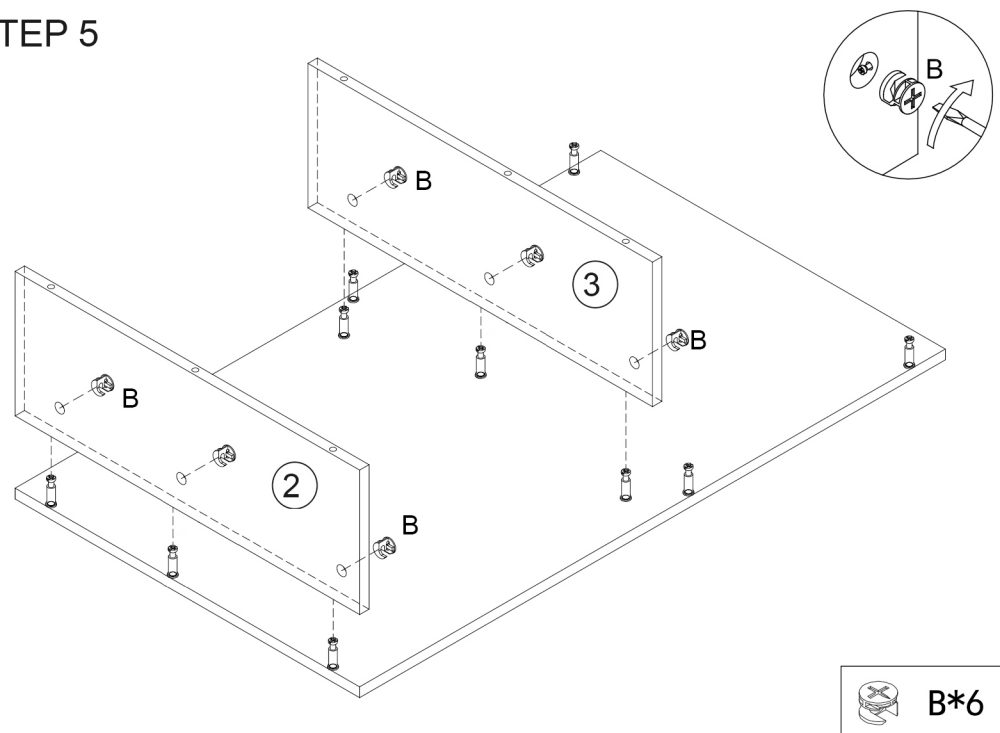
STEP 3



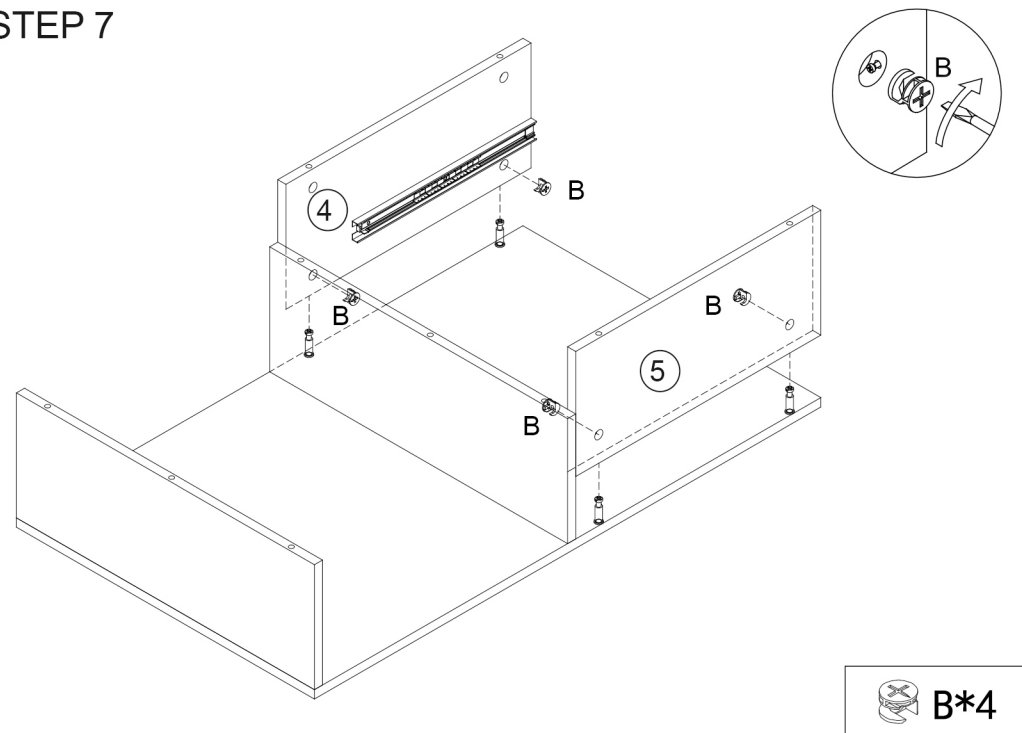
STEP 4



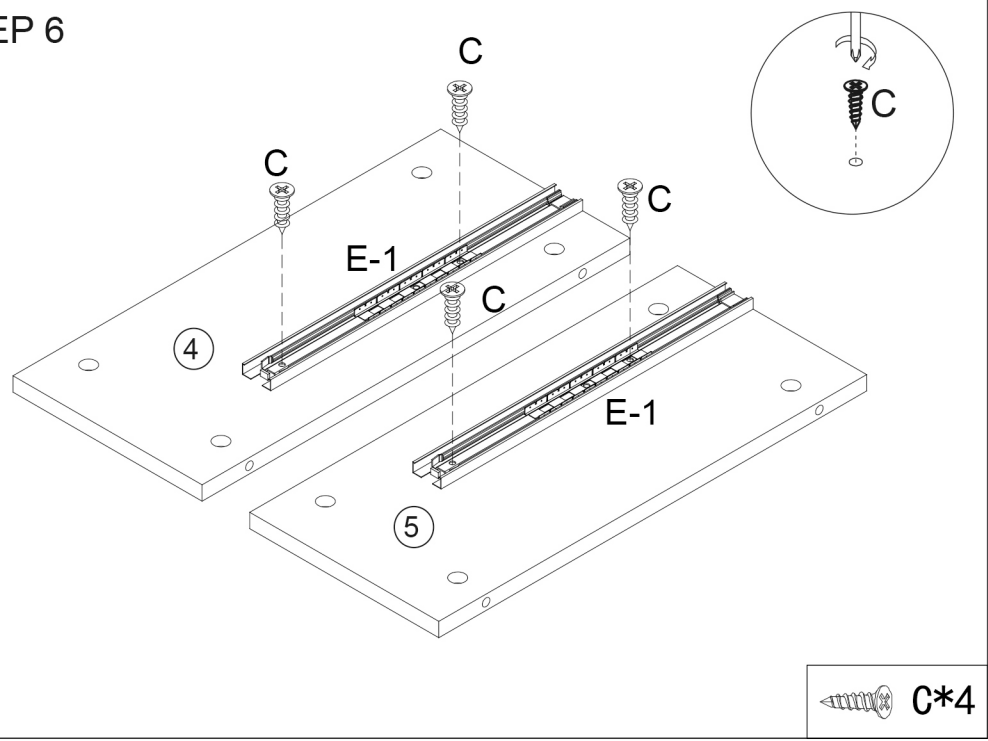
STEP 5



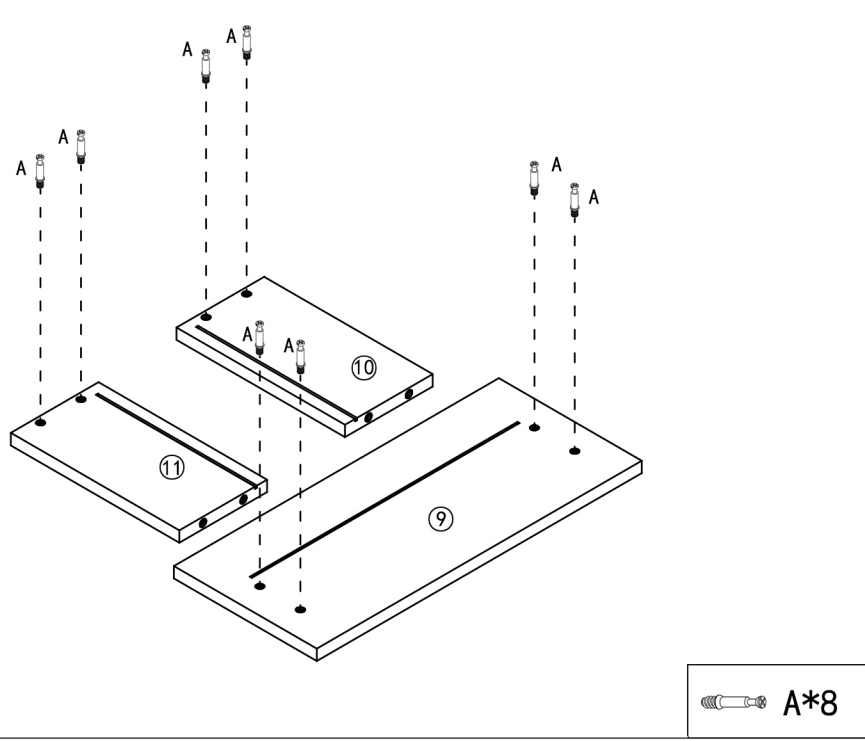
STEP 7



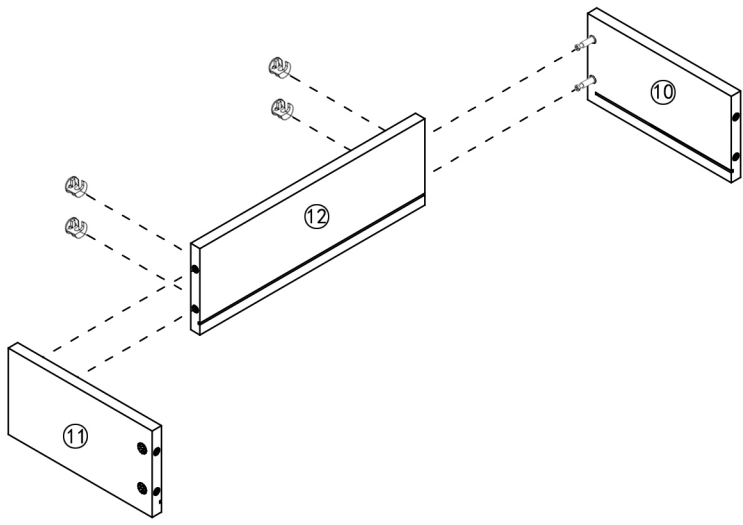
STEP 6



STEP 8

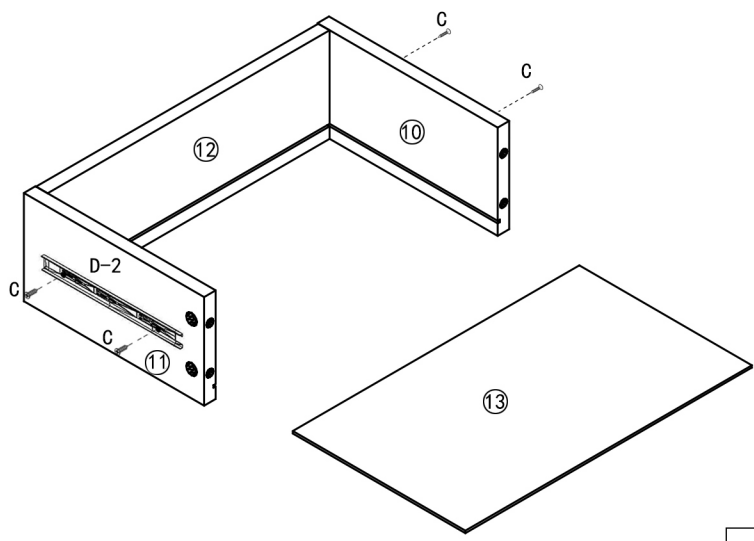




STEP 9



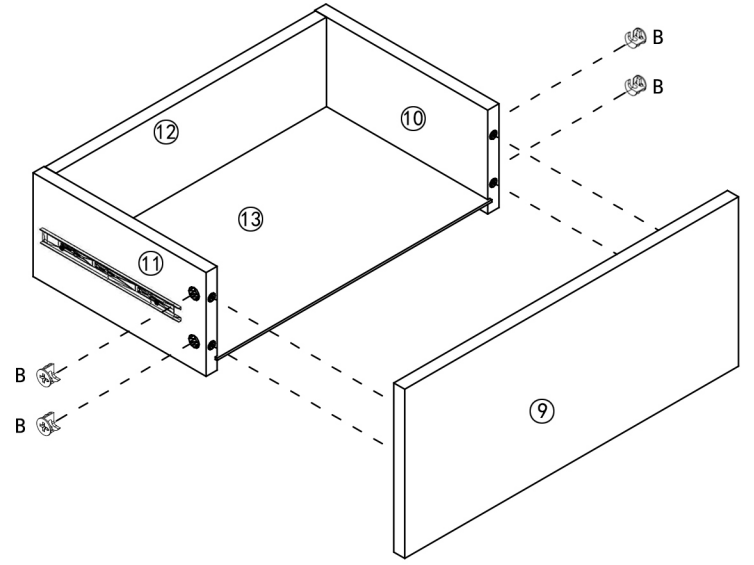
 B*4

STEP 10



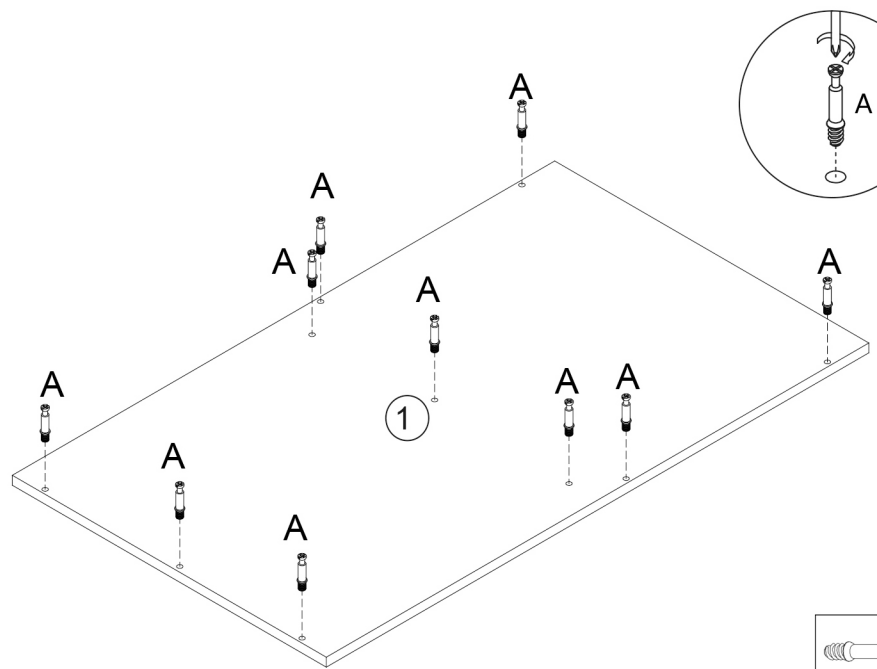
 D-2*2
 C*4

STEP 11



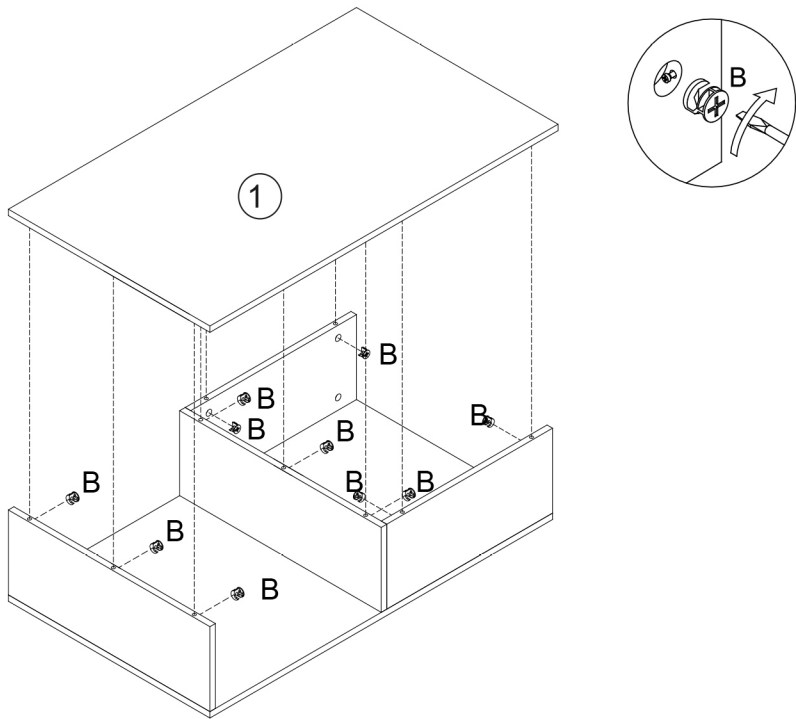
 B*4


STEP 12



 A*10

STEP 13



 B*10

STEP 14

