

CONTENTS

Safety and care advice	1
Components – panels	2
Components – fittings	3
Assembly instructions	5
Copyright	14

⚠ SAFETY AND CARE ADVICE ⚠

PLEASE READ THESE INSTRUCTIONS CAREFULLY AND KEEP FOR FUTURE REFERENCE

- **Warning:** This unit weighs approximately 31kgs. Please lift with care.
- Check you have all the components and tools listed on pages 2 and 3.
- Remove all fittings from the plastic bags and separate them into their groups.
- Keep children and animals away from the work area, small parts could choke if swallowed.
- Make sure you have enough space to layout the parts before starting.
- Do not stand or put weight on the product, this could cause damage.
- Assemble the item as close to its final position (in the same room) as possible.

- Assemble on a soft level surface to avoid damaging the unit or your floor (use opened out unit carton).



- We do not recommend the use of power drill/drivers **for inserting screws**, as this could damage the unit. Only use hand screwdrivers.
- **Safety note:** If there is any chance of this unit being pulled over by children etc. it is recommended that the unit is secured to a wall using suitable fixings (not supplied).
- Dispose of all packaging carefully and responsibly.

CARE AND MAINTENANCE

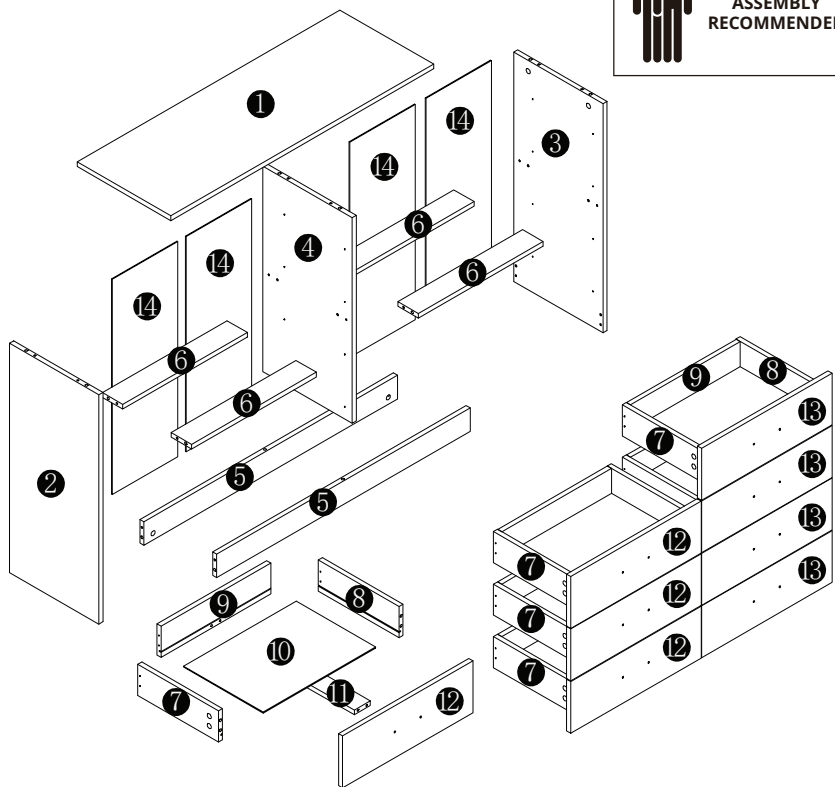
- Only clean using a damp cloth and mild detergent, do not use bleach or abrasive cleaners.
- From time to time check that there are no loose screws on this unit.

- This product should not be discarded with household waste. Take to your local authority waste disposal center.

Note If required the next page can be cut out and used as reference throughout the assembly. Keep this page with these instructions for future reference.

COMPONENTS — PANELS

Please check you have all the panels listed below:



PANEL LIST

1	Table Top	x1	6	Middle Cross Bar	x4	11	Drawer Cross Bar	x8
2	Left Side Panel	x1	7	Drawer Left Side Panel	x8	12	Drawer Front Panel	x4
3	Right Side Panel	x1	8	Drawer Right Side Panel	x8	13	Drawer Front Panel	x4
4	Middle Panel	x1	9	Drawer Back Panel	x8	14	Back Panel	x4
5	Bottom Middle Cross Bar	x2	10	Drawer Base Panel	x8			



COMPONENTS

A x50



H x16



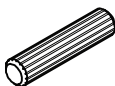
B x50



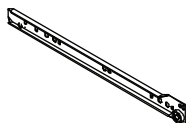
I x24



C x52



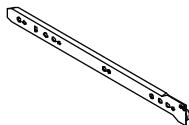
J x8



D x64



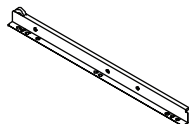
K x8



E x32



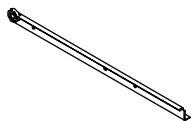
L x8



F x10



M x8

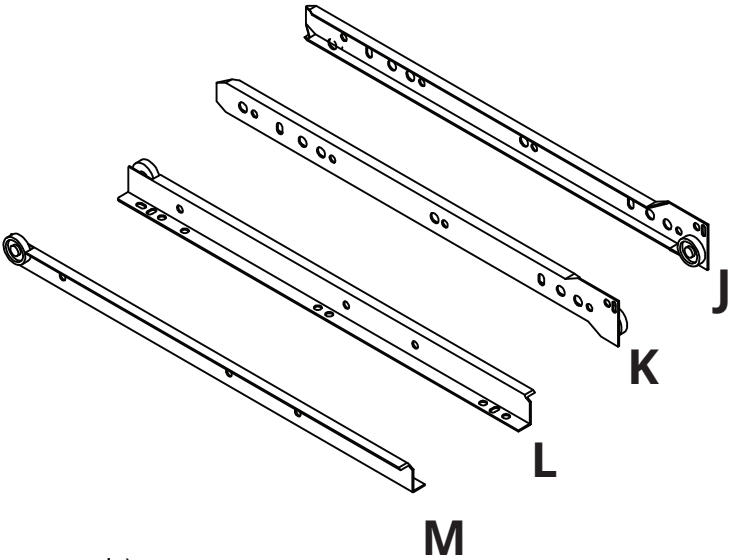


G x8



DRAWER RUNNER INSTRUCTION

⚠ IMPORTANT - Please Read it Carefully
1 Pair Drawer runner includes 4 pieces.

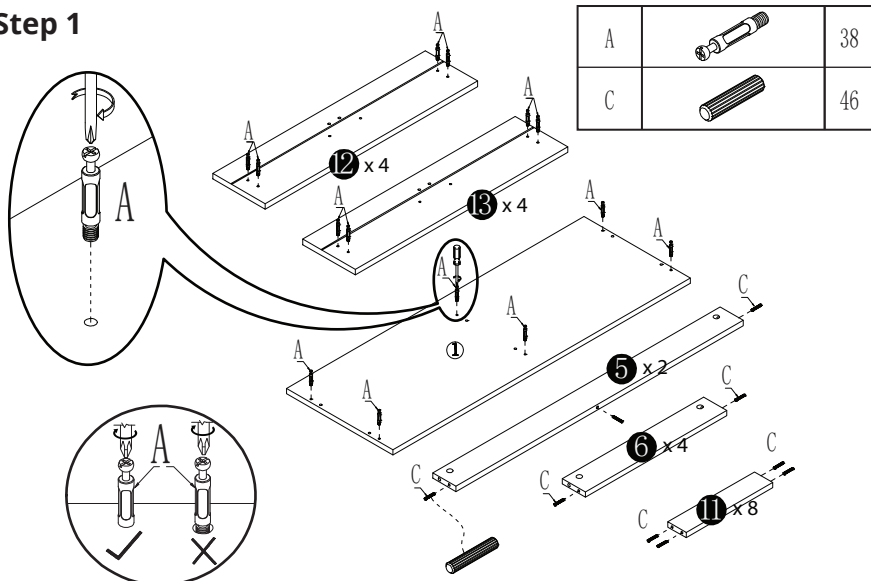


Fittings (not to scale)

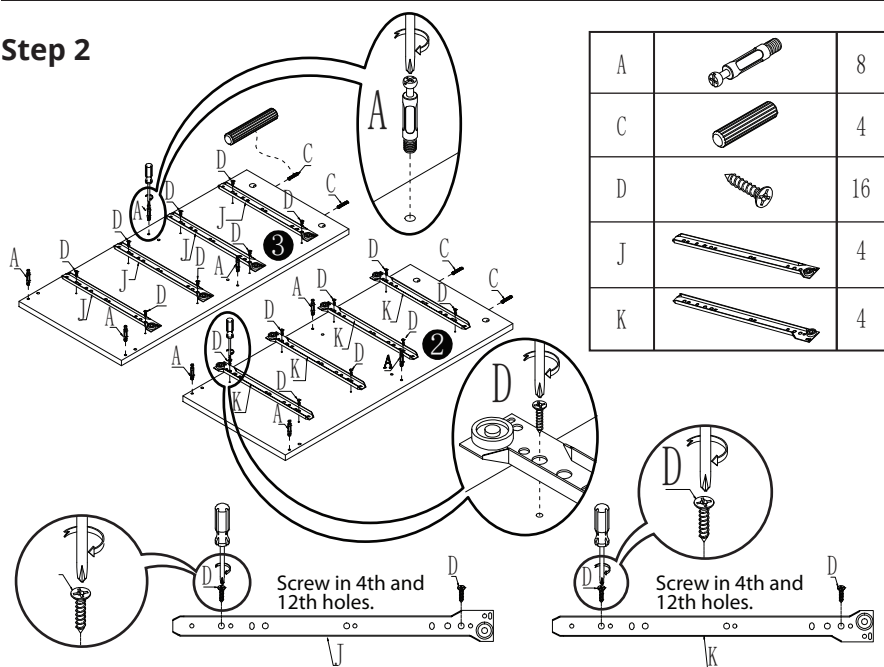
No.	Description	Qty	
J	Outer Drawer Runner - Right	8	A perspective view of part J and a circular inset showing its end fitting, labeled R.
K	Outer Drawer Runner - Left	8	A perspective view of part K and a circular inset showing its end fitting, labeled L.
L	Inner Drawer Runner - Right	8	A perspective view of part L and a circular inset showing its end fitting, labeled R.
M	Inner Drawer Runner - Left	8	A perspective view of part M and a circular inset showing its end fitting, labeled L.

ASSEMBLY INSTRUCTIONS

Step 1

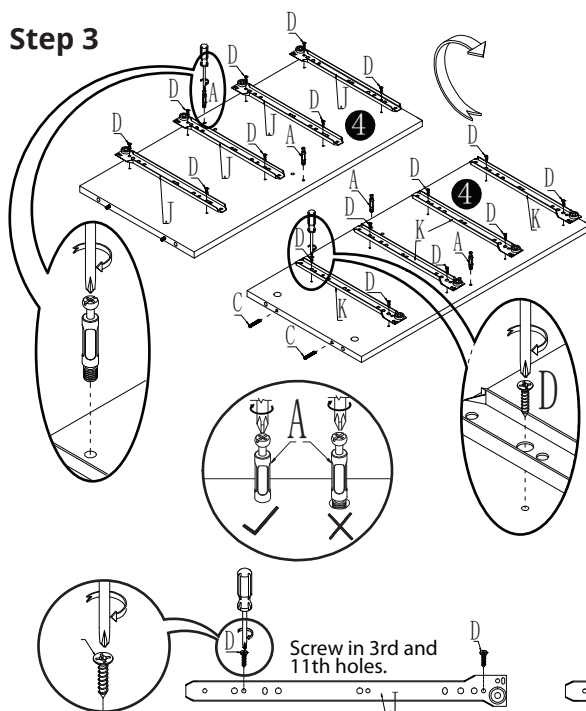







Step 2

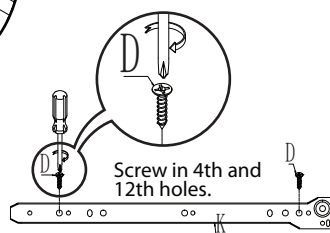
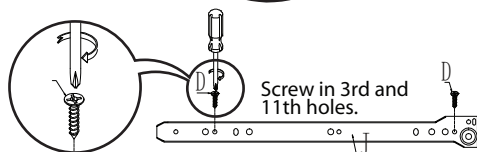


ASSEMBLY INSTRUCTIONS

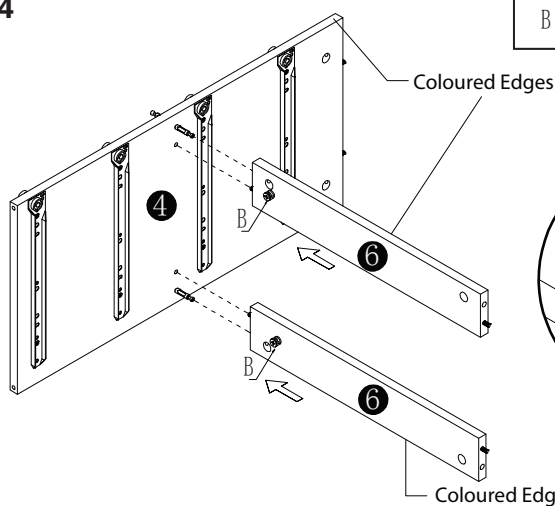
Step 3



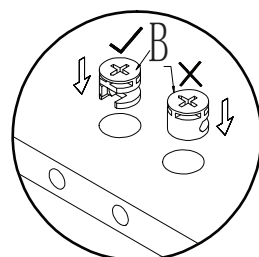
A		4
C		2
D		16
J		4
K		4



Step 4

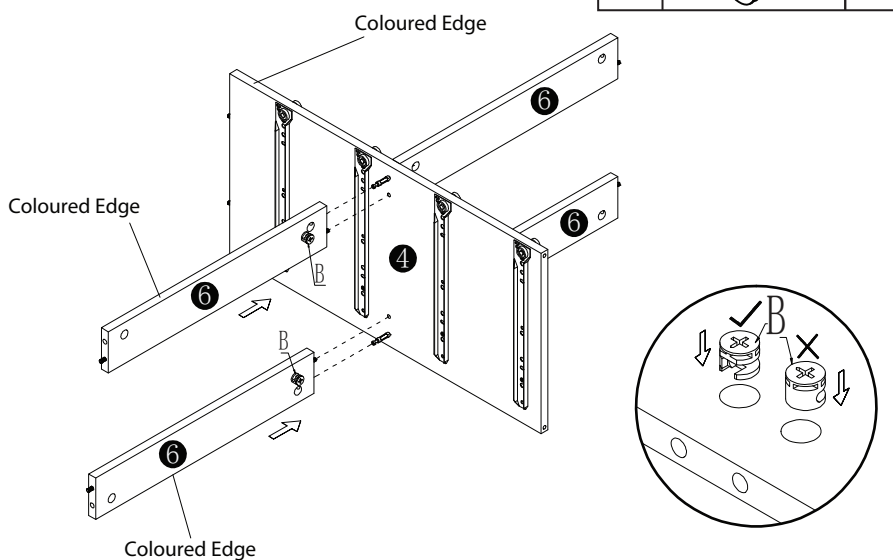


B		2
---	--	---

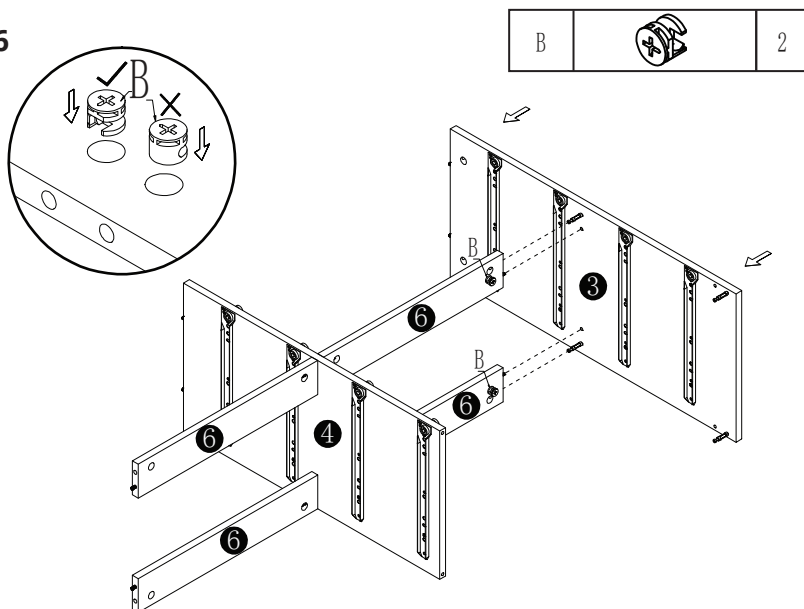


ASSEMBLY INSTRUCTIONS

Step 5

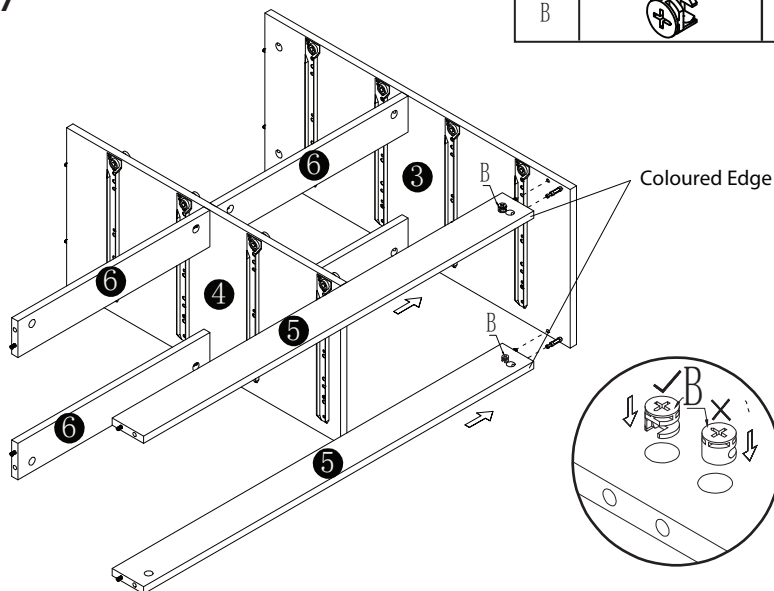


Step 6

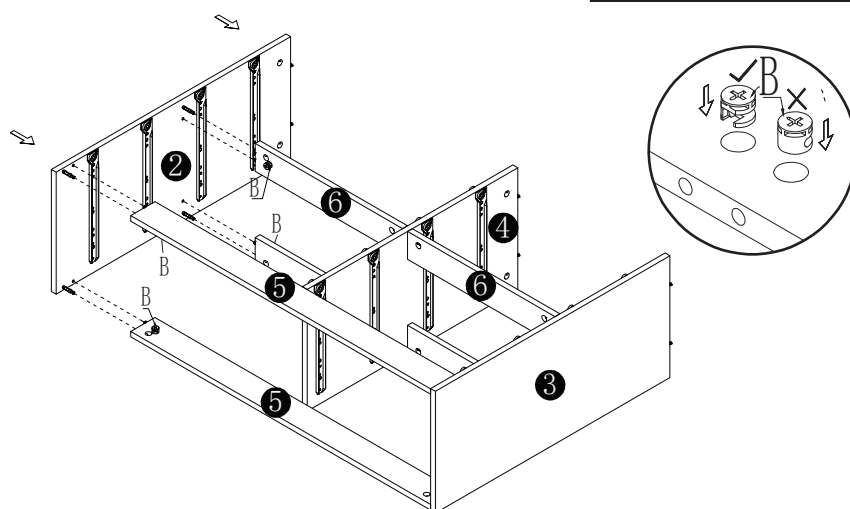


ASSEMBLY INSTRUCTIONS

Step 7

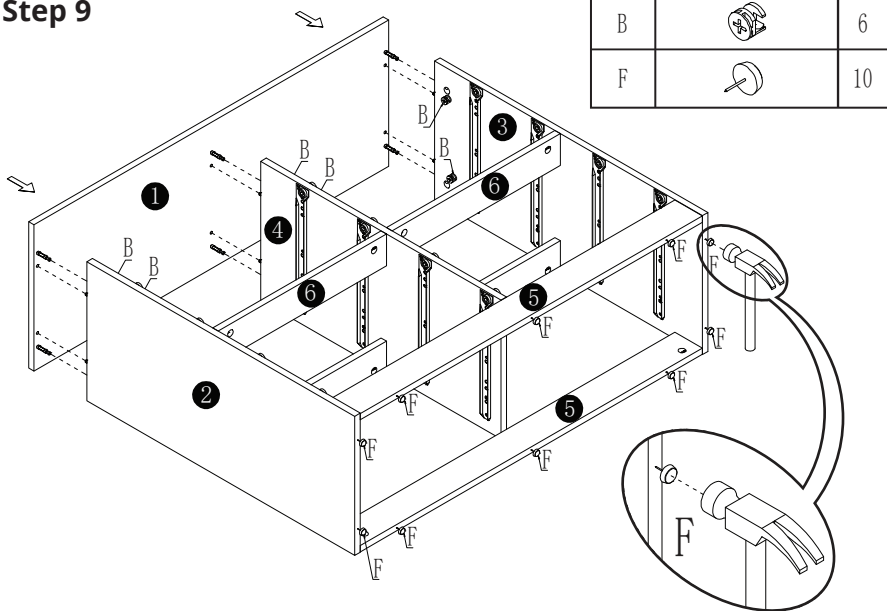


Step 8



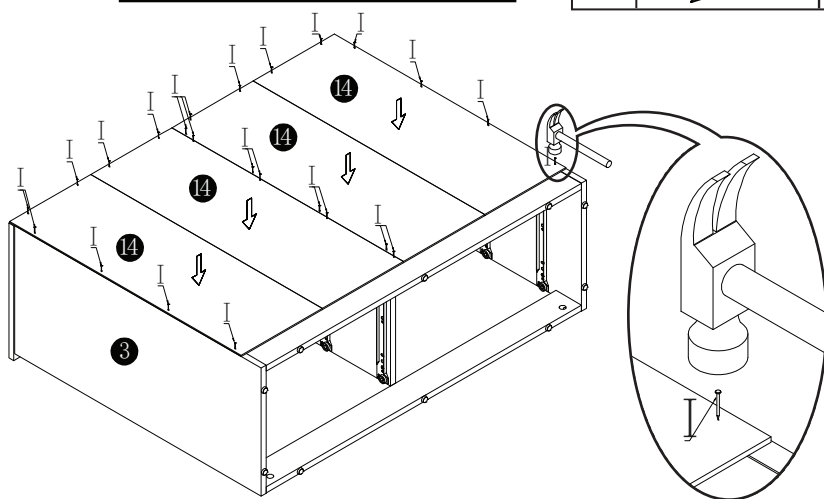
ASSEMBLY INSTRUCTIONS

Step 9



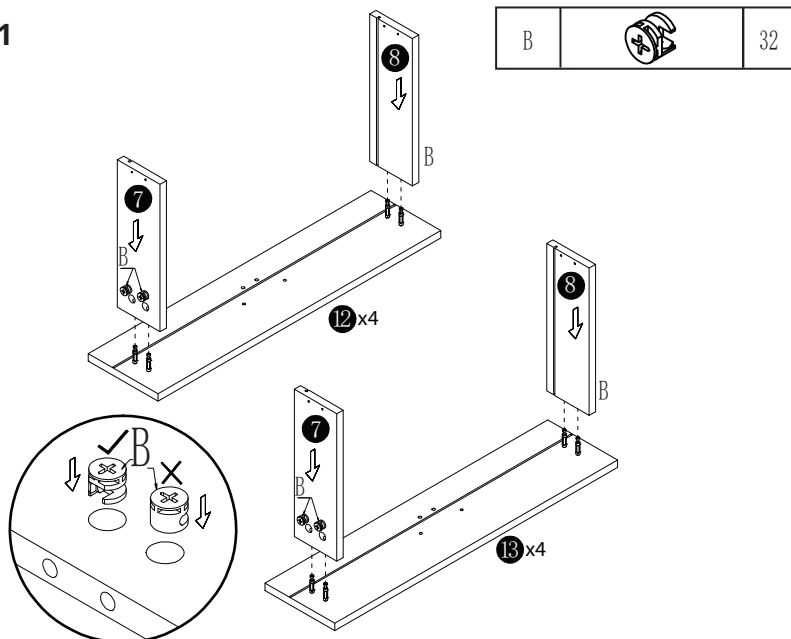
Step 10

⚠ Turn the product upside down

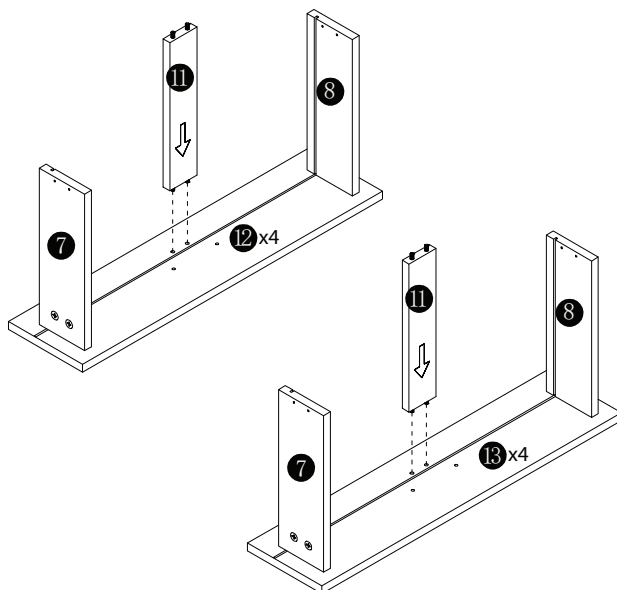


ASSEMBLY INSTRUCTIONS

Step 11

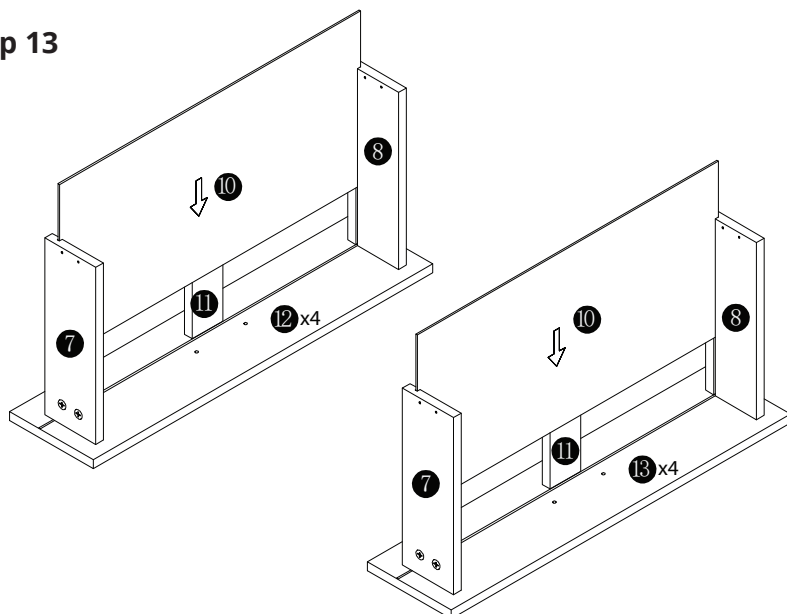


Step 12

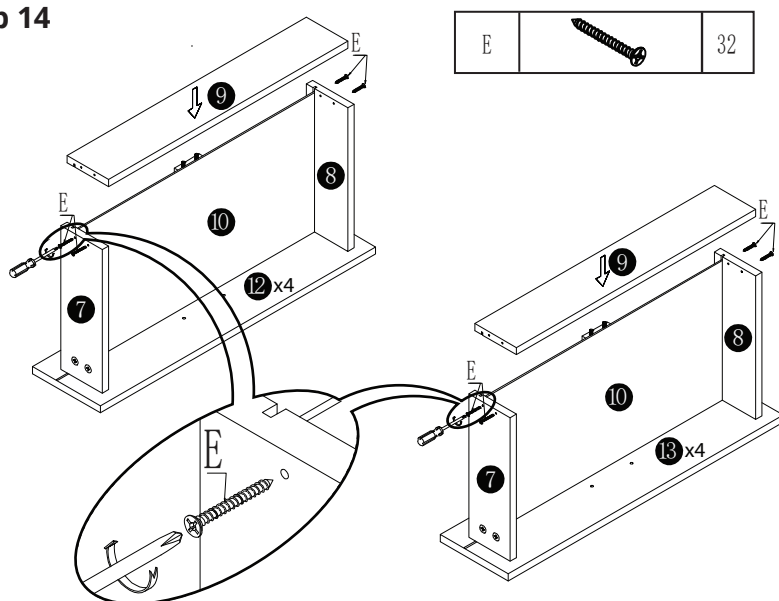


ASSEMBLY INSTRUCTIONS

Step 13

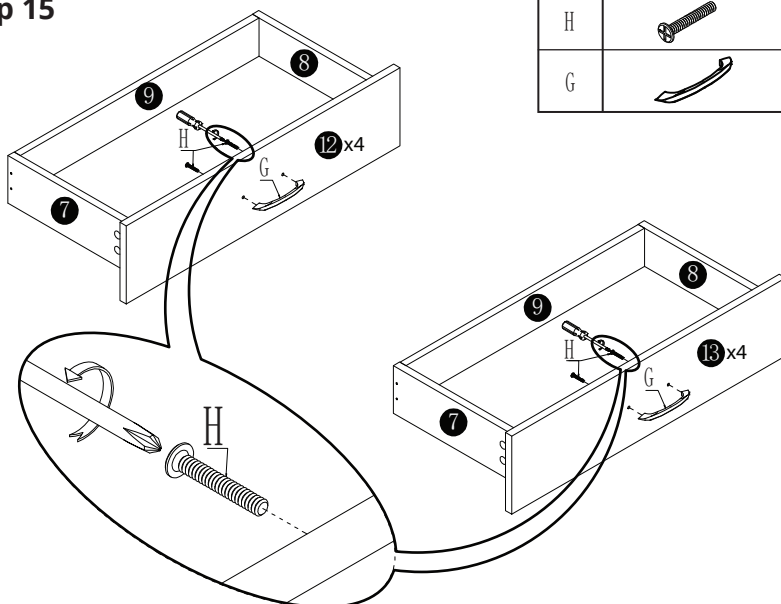




Step 14



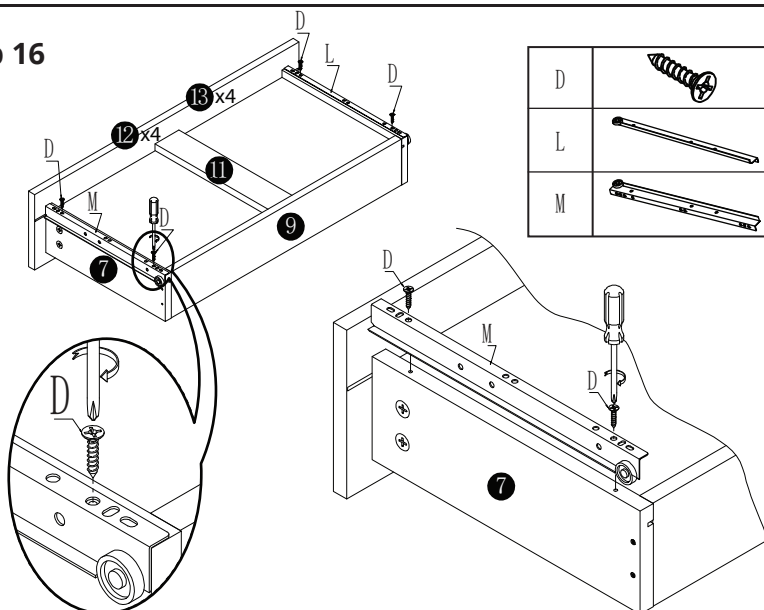
ASSEMBLY INSTRUCTIONS




Step 15



H		16
G		8

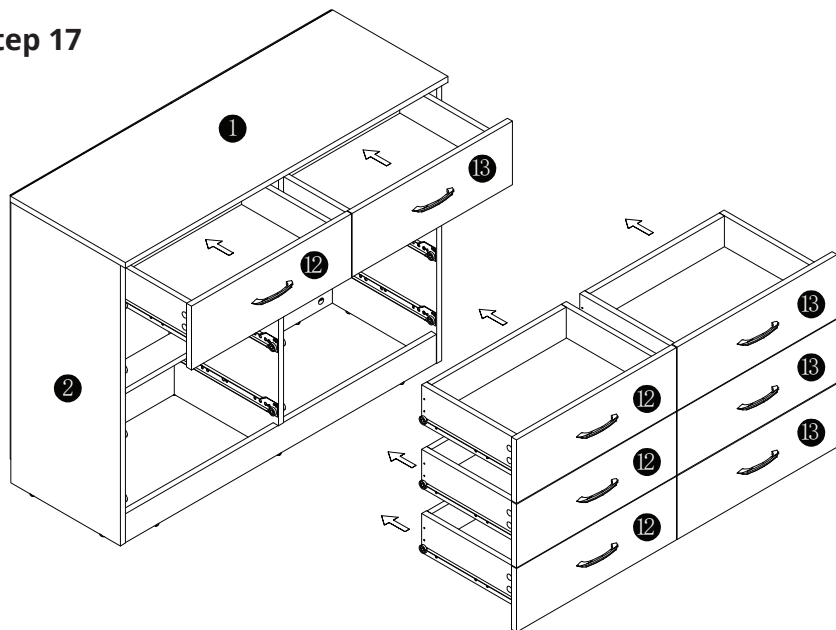
Step 16



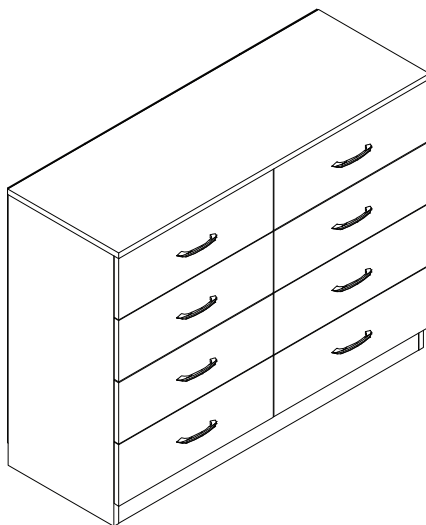
D		32
L		1
M		1

ASSEMBLY INSTRUCTIONS

Step 17



Step 18



Congratulations! Now you have finished assembling the product. There may be some dust or hand marks on your item, we recommend using a standard wood polish to clean this product.

IF YOU FIND A DEFECTIVE PART

We fully stock all parts and components. Any defective part can be quickly replaced. Take note of the defective part number in manual and we will arrange a replacement.

COPYRIGHT

All material in this instruction manual is copyrighted by AGTC Ltd.

Any unauthorised use may violate worldwide copyright, trademark and other laws.