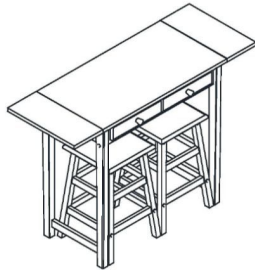


HANDMADE WOODEN TABLE WITH STOOLS

Product Description: HANDMADE WOODEN TABLE WITH STOOLS



THIS INSTRUCTION BOOKLET CONTAINS IMPORTANT SAFETY INFORMATION. PLEASE READ IT CAREFULLY AND KEEP FOR FUTURE REFERENCE.

Before Starting:

- Read each section carefully before starting. It is very important that each step is performed in the correct order. If these steps are not followed in sequence, assembly difficulties will occur.
- Make sure all parts are included. Most board parts are labeled and stamped on the raw edge.

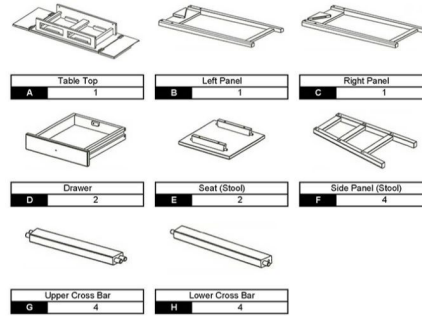
- Working spacious area, preferably on a carpet, near the place the unit will be located.
- Do not use power tools to assemble your furniture. Power tools may strip or damage the parts.

Recommended no. of people needed for assembly : 2

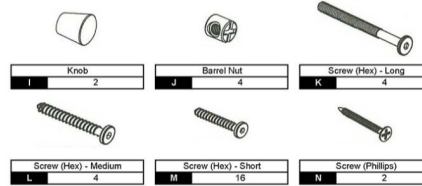
HELPFUL HINTS:

- Identify, sort and count the parts before beginning assembly.
- Compression dowels should be tapped in with a rubber mallet.
- Slides have a lip on the right only.
- Back panel provide stability and support.
- Unit may collapse without back panel installed.
- Clean the product with your choice of furniture polish and a soft cloth. DO NOT USE harsh chemicals or abrasive cleaners.
- Move your new furniture carefully. Two people are needed to lift and carry the unit to its new location.
- Never push, drag or scoot your furniture (especially on a carpet).

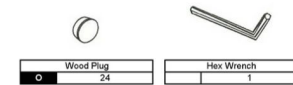
PART LIST:



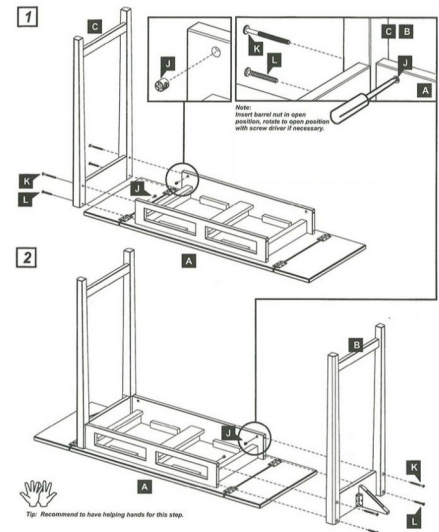
HARDWARE LIST:



HARDWARE LIST (Continue):

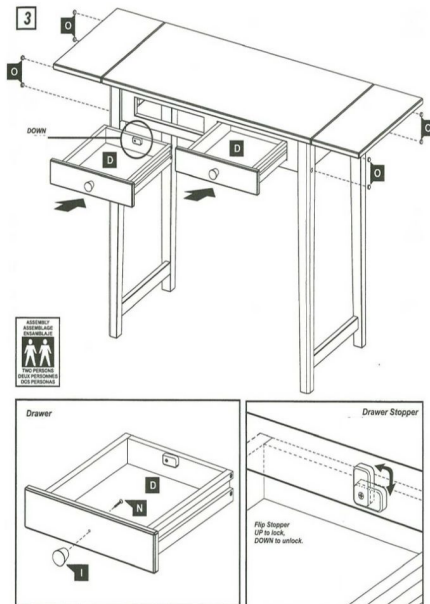


Assembly:



Page 3/6

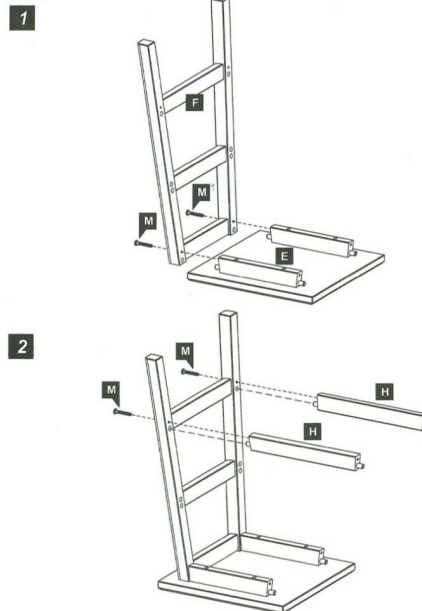
Assembly (Continue):



Page 4/6

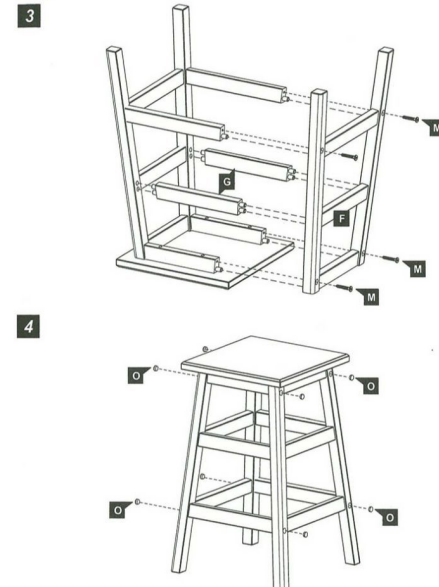
Assembly (Continue):

Stools



Assembly (Continue):

Stools



Page 5/6

Page 6/6