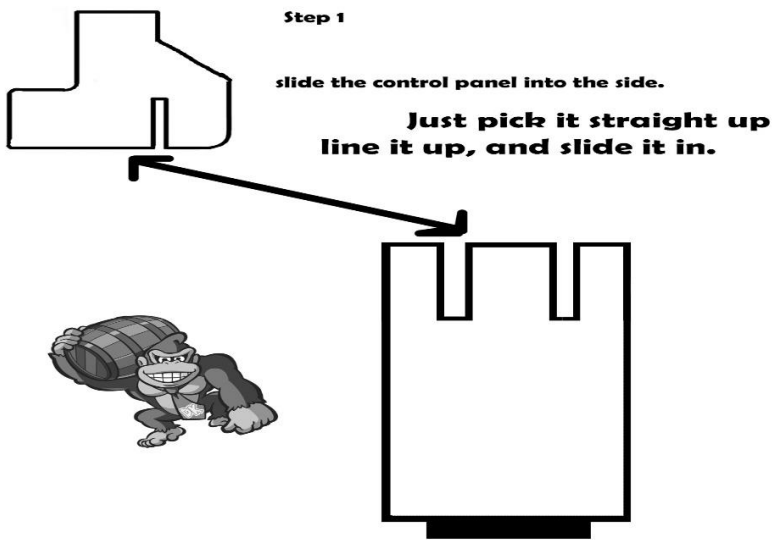


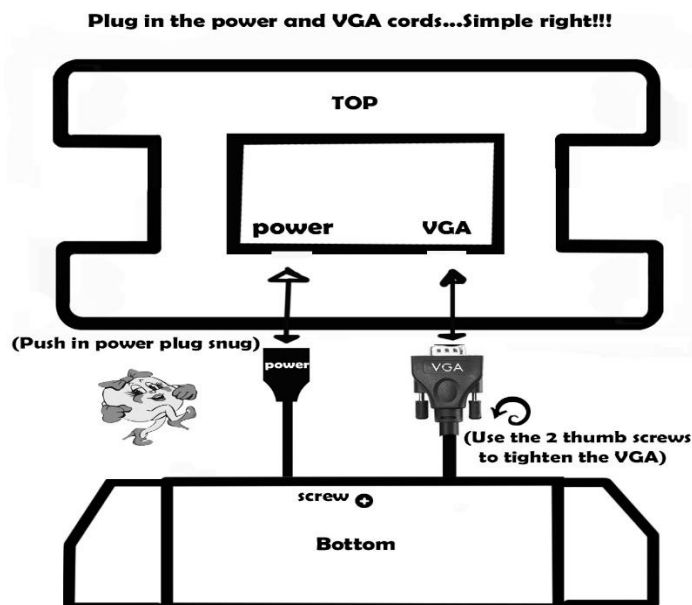
## Doc and Pies Arcade Factory Cocktail instructions

These 3 step instructions are simple and quick. You will be up and playing in a few minutes.

**Step 1:** Open both boxes. One contains the base the other contains the top. Remove wrappings and slide the two control panels into place. Slots are ready to line up and push easily into place.

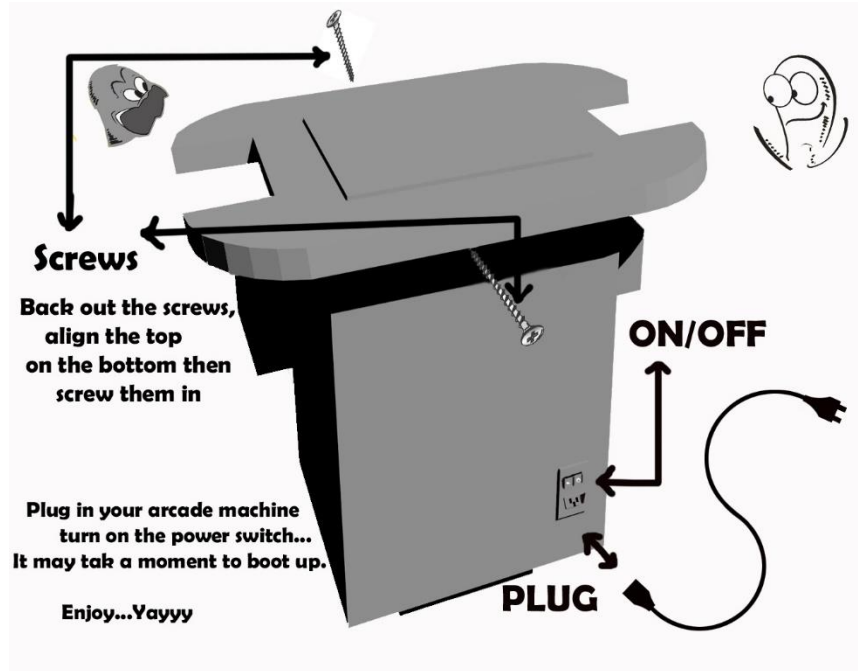


**Step 2:** Line up the top and plug in the VGA cable and Power cable.



There are 4 Philips screws on the sides of the cabinet, and Just above the control panels. Back them out and screw them in to the side to hold the top in place.

**Step 3:** Plug in the supplies power cord to the back of the arcade and plug it in. Turn the power switch on and let the cocktail boot up.



Pick the game you want to play and you're having a blast.

From all of us at Doc and Pies Arcade Factory.

ENJOY!

Tip: DO NOT pick up the unit by the top or control panels. Slide it on the pads. Picking up the unit could break the top or side panels. Only pick up by the bottom.

Tip: Use player one button to start games. Hold player 1 button for 4 seconds to exit games.

Visit [docandpiesarcadefactory.com](http://docandpiesarcadefactory.com) for other great arcades