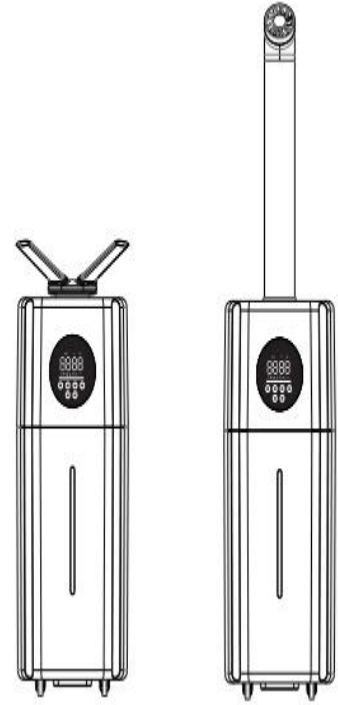


**Zhongshan Banger Electric Appliance Factory**  
 ADD: No.8, East Fufeng Road, Zhongshan City, Guangdong Province  
 Tel: 17512956346



Water circulation ultrasonic air humidifier  
 Model: BE-J001  
 Product Description

Hello!

You choose our company's water cycle ultrasonic air humidifier is equal to choose a comfortable and healthy modern life. Welcome to the vast number of users! The company's products have been adhering to the business philosophy of "creating quality products, serving the society", taking the road of high-tech and high-quality development, and comprehensively implementing modern management. We are committed to long-term and stable to provide users with first-class products and quality services, firmly believe that our products can bring you a better enjoyment.

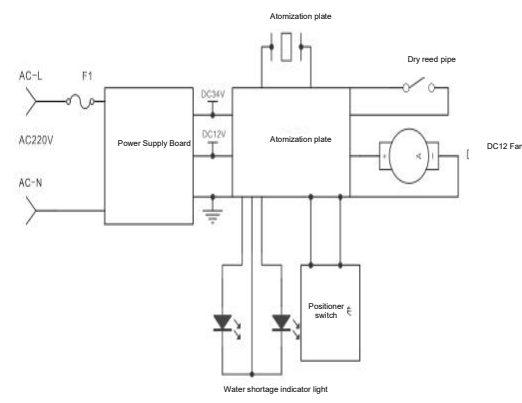
Please read this instruction carefully before installation and use and keep it properly.

**Environmental impact statement for users**

"Protect the environment, benefit mankind, prevent pollution and improve continuously" is the aim and direction of our environmental management. When you purchase our products, the waste cartons, waste plastic bags and waste foam plastics are all available for reuse. Please reuse and recycle. Any product has a service life, please scrap it according to the national regulations. Whether it is scrapped due to the expiration or replacement, it should be sent to the local waste purchasing station for unified treatment.

Zhongshan Banger Electric Appliance Factory!

**The circuit principle diagram**



Catalog	
Product specification sheet	1
Precautions for use	2
Name of each part of the product	3
Product instructions	4
Water tank filling instructions	5
Maintenance	6
Common troubleshooting methods	7
Warranty instructions	8
Maintenance records	9
RoHS logo	10
The circuit principle diagram	11
Environmental impact statement for users	12

**Product specification sheet**

No	Name	Content	Remarks
1	Product name	Water circulation ultrasonic air humidifier	
2	Product model	BE-J001	
3	Rated voltage and rated frequency	110V~240V/50Hz	
4	Rated power	110W	
5	Maximum evaporation	2000mL/h	
6	Rated capacity	21L	
7	Executive Standards	GB4706.1-2005 GB4706.48-2009	

Note: due to product improvement and technical update, if the parameters are changed, please refer to the actual product without further notice.

**RoHS logo**

Environmental protection age mark		Limit of harmful substances in electrical and electronic products					
No	Part name	Name and content of harmful substances in products					
		Lead (Pb)	Mercury (Hg)	Cadmium (Cd)	Hexavalent chromium (Cr <sup>+6</sup> )	Polybrominated biphenyls (PBB)	Polybrominated dimethyl ether (PBDE)
1	Electrical components	×	○	○	○	○	○
2	Power cords	○	○	○	○	×	○
3	Plastic parts	○	○	○	○	○	○
4	Hardware	○	○	○	○	○	○

**This form is prepared according to SJ / T1 1364**

×	It means that the content of the toxic and harmful substance in all homogeneous materials of the component is below the limit specified in GB / T 26572 standard.
○	It means that the content of the toxic and harmful substance in at least one homogeneous material of the component exceeds the limit requirement of GB / T 26572 standard.

Description of harmful substances: the content of harmful elements in the materials used by our company's products has been subject to the limit requirements of GB / T 26572, in which the component mark "X" indicates that due to the development of global technology, the content of harmful elements cannot be replaced. According to the development of global technology, our company will strive to realize the replacement of hazardous substances. If the technology development and the environmental protection upgrading of hazardous substances in materials, it will be incorporated into the new manual.

This logo is applicable to the sale of electronic information products in the people's Republic of China. The number in the center of the logo is the number of years of environmental protection service life under normal use conditions.

Warm tips - the safe service life depends on the product. It is recommended to replace the machine after a certain service life.

Note: all the above contents have been carefully checked. If there are any printing errors or misunderstandings in the contents, the company reserves the right of interpretation,

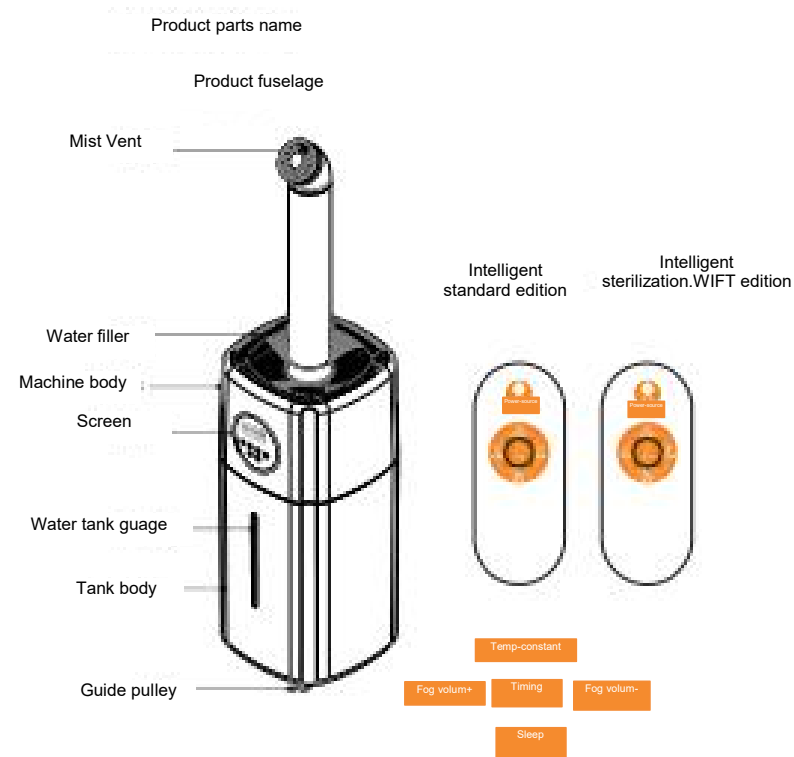
**Maintenance records**

Maintenance times	Fault phenomenon	Maintenance and treatment	Maintenance date	Signature (seal) of maintenance personnel
1				
2				
3				
4				
5				

Note: After maintenance, maintenance personnel must register the maintenance situation in detail, so as to provide you with better service.

**Precautions for use**

- Please do not pull the plug with wet hands to avoid the risk of electric shock.
- Please do not disassemble, repair or transform this product without authorization
- Do not touch the atomizer by hand when starting the machine to avoid danger.
- The power cord should not be scratched, damaged, knotted or pressed with heavy objects, otherwise it may cause danger.
- Please do not replace the power cord without authorization. If there is any abnormal phenomenon, please pull out the plug immediately and contact the manufacturer or after-sales customer service.
- If the power cord is damaged, in order to avoid danger, it must be replaced by the maintenance department designated by the manufacturer or similar professionals.
- Do not separate the water tank from the base during work, and do not touch the water and parts in the base.
- This machine is for indoor use only.
- Please unplug the power plug when it is thunderstorm or not used for a long time.
- Please do not turn the appliance over when it is electrified and there is water inside to avoid burning the internal electronic components.
- Please keep this product out of the reach of children. Do not let children use this product to avoid danger.
- The power supply voltage must be consistent with the rated voltage of the product. If the power supply voltage does not match, do not use this product.
- Please place the humidifier at room temperature for 30 minutes before use to prevent water tank damage caused by sudden temperature change.
- Please use it at normal room temperature (5 °C - 40 °C ).
- Please place it on a flat position to avoid tilting.
- Please do not put the humidifier directly on the wood floor to avoid moisture deformation.
- Please place the humidifier 2 meters away from furniture and electrical appliances to avoid moisture.
- Please keep away from heat source and avoid direct sunlight. Do not inject hot water above 40 °C into the water tank and water tank to avoid damaging the machine.
- Do not let water flow into the body from the air outlet. If there is water at the body, please wipe it with dry cloth to avoid damaging the machine.
- When the room temperature is lower than 0 °C , please pour out the water in the water tank and water tank, so as to avoid freezing and damage to the machine.
- Please do not put metal products, chemicals, detergents into the water tank, or there will be bad atomization.
- Please turn off the power and pull out the plug before pouring out the water in the sink.
- If the humidifier wants to move, clean and add water, the power must be turned off and the power plug must be pulled out. The machine can not be moved at will during operation.
- It is forbidden to inject water into the mist outlet and air outlet.
- When cleaning, please avoid water from inside the appliance.
- Don't disassemble the original body at will.



**Warranty instructions**

Product warranty provisions:

1. Within the warranty period of the product, the valid certificate for purchasing the product must be provided: purchase invoice or product Sn code.
  - a. Free warranty within 12 months according to the SN code of the product;
  - b. Warranty for 1 year with purchase invoice (SN code of product shall be provided from the date of invoice issuing)
2. During the warranty period, the following situations occur, which are not within the scope of free maintenance
  - a. Damage caused by improper use or storage by users;
  - b. Damage caused by user's own installation or maintenance
  - c. If the valid certificate cannot be presented (neither the invoice nor the SN code of the product) is not clear, cannot be confirmed or altered;
  - d. Damage caused by irresistible natural disasters (typhoon, snow disaster, hail, earthquake, debris flow, etc.).
3. If the product fails beyond the warranty period, we will also provide you with warm, thoughtful and timely paid service.



**Warning**  
If the user contacts a third party without professional qualification for maintenance by himself, all consequences caused by this shall be borne by the user himself.

- Maintenance**
- Please clean the water tank, water tank and atomizer regularly, and unplug the power plug before cleaning.
  - External cleaning of humidifier: wipe with clean soft wet cloth.
  - Do not use hard objects when cleaning to avoid damage to parts.
  - Please replace the aged water in the water tank frequently to keep the inside of the humidifier clean.
  - Before cleaning the product, you must pull out the power plug and stop working, or there may be short circuit or electric shock.
  - When cleaning the body and the whole part of the display panel, please wipe it with a clean cloth. It is strictly forbidden to clean the body with water. Do not immerse the body in water to prevent short circuit of the body due to water inflow.
  - Except for the whole part of the base and display panel, other parts of the product can be cleaned with clean water and wiped dry with clean cloth.
  - Please do not use metal brush, nylon brush, detergent, diluent, volatile oil and other cleaning products to clean the product, or it may damage the surface structure of the product or affect the humidification effect.
  - The inside of the water tank can be cleaned by adding appropriate amount of washing powder, washing liquid and 40 °C warm water. The water outlet is sealed, soaked for 10-15 minutes, and then washed with clean water. The outside of the water tank can be directly wiped with a wet cloth.
  - Please use soft detergent, soft cloth or sponge for cleaning and maintaining the product.
  - Please wipe the dirt on the power cord with dry soft cloth.
  - Please store the machine in a dry and ventilated place.

**Common troubleshooting methods**

Fault phenomenon	Causes	Resolvent
The display screen is not bright, there is no wind or fog	The power supply is not connected or there is a problem	Re connect the power supply, if it still doesn't work normally, please contact our after-sales service in time
The display is on, but there is no wind and fog	The water level of the base is too high	Pour out some water from the base and cover the water tank
Less spray	There are too many scales or impurities in the water of the atomizer	Clean the atomizer and replace the clean water
Abnormal noise	There is too little water in the water tank and the surface is not smooth	Add water to the water tank and place the humidifier on a solid and stable surface
Water cannot reach the base	The water injection cover is stuck or the water tank is not placed properly	Adjust the water filling cap and install the water tank correctly

**Product instructions**

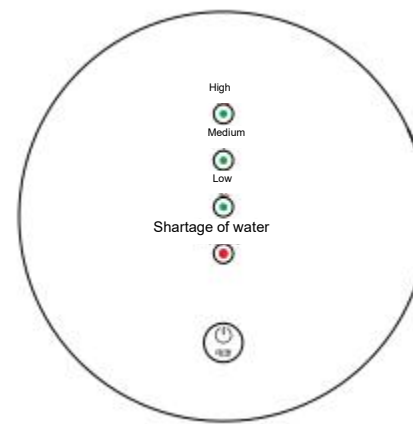
**Control panel**



**Intelligent sterilization operation:**

1. Power button: after connecting the power supply, touch the power button, the LCD will light up, and the machine will work. Touch the power button again, and the humidifier will stop working and enter the standby state.
2. Constant humidity key: press this key for the first time, the product will enter the constant humidity function, and the ambient humidity on the LCD will be on; the default humidity is 40%, then press 5% to increase until 90%, then exit the constant humidity function, adjust it in a cycle, and stop working when the ambient humidity reaches the preset humidity value.
3. Timing key: This product has the function of appointment and timing. It can be shut down at 12 times from 1 hour, 2 hours to 12 hours. Touch this key to set the shutdown time. Press the key to display the corresponding time.
4. Fog volume key: the product is divided into 1 and 2 gear, 3 gear, fog volume can be adjusted, press the fog amount key for cycle adjustment each time; the product is started by default to work with the highest fog amount
5. Sterilization key: in the working state, touch the "sterilization" key to turn on the sterilization function, and then touch the key again to turn off the sterilization function. The sterilization function of the product is turned off by default.
6. Sleep function: This product has one key intelligent sleep humidification function; in the working state, the product lightly touches the "sleep" key to start the - key sleep function, the intelligent constant humidity 65% display screen flashes for 5 seconds, and then automatically closes the display screen, keeping the original gear working; Press any function key to light up the screen to display the current working state, press any key to exit the one key sleep function when the display is on; if there is no operation in 5 seconds, the screen will be closed again, and the remote control will directly press one button to sleep

**Touch pad operation:**



1. Power button: after connecting the power supply, touch the power button, the LCD will light up, and the machine will work. Touch the power button again, and the humidifier will stop working and enter the standby state.
2. Power button: the product is divided into three levels: low fog, medium fog and high fog. The fog volume can be adjusted by pressing the power button every time. The product starts up with the lowest fog by default.

**Usage method:**

1. Put the machine on the horizontal ground, open the upper cover of the main engine to inject water or remove the main engine to the water tank, and inject proper amount of clean tap water or distilled water (Note: the plug must be pulled off when filling water, and the water temperature should not exceed 40 °C ). Pay attention not to exceed the highest warning line of the water tank.
2. Put the main engine on the base steadily, and then plug the power plug of the machine into the socket. Before connecting the power supply, make sure that the working voltage of the machine is consistent with the use voltage
3. When the water level in the water tank of the machine is too low, the machine will automatically cut off the power supply and stop working. At the same time, the water shortage indicator light is on (red). Please turn off the power switch and pull out the power plug to add water. Open or remove the main engine to add water. When the water level is lower than the maximum warning line, install the host on the water tank, and then add water to the water tank.

**Reminder:**

About the water accumulation on the base: the humidifier uses ultrasonic atomizing plate vibration to disperse liquid water into water mist. The water tank is only a transitional water storage tool, and all the water tanks in the base of the humidifier will accumulate water. Please feel free to use it.  
About fog adjustment: if there is water around the machine in the process of use, it means that the room humidity is too high, please adjust the fog amount properly.

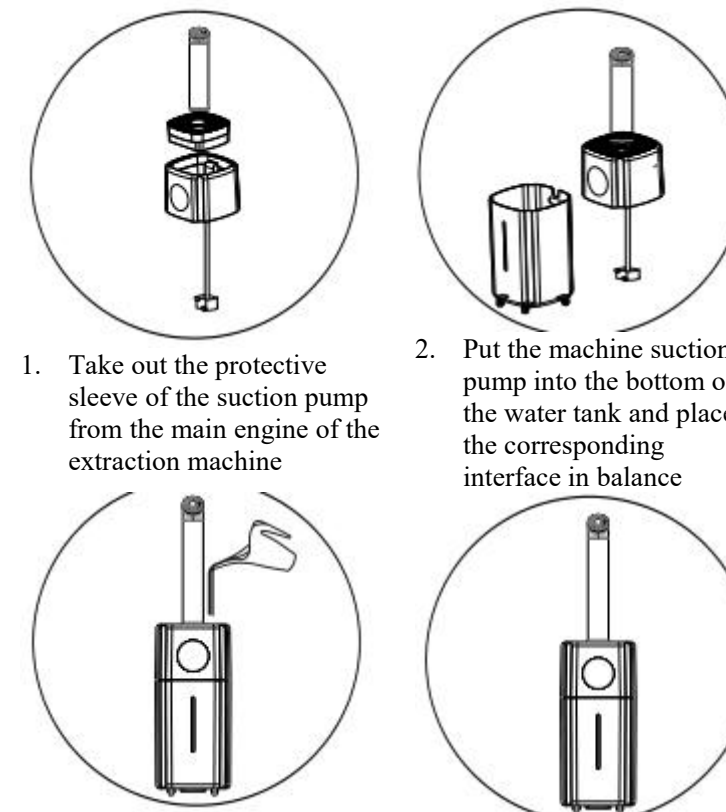
**Water tank filling instructions**

**Water tank filling method**

1. Put the machine on the horizontal ground, take out the suction pump bag of the extraction host, and inject a proper amount of clean tap water or distilled water into the water tank (the power plug must be pulled out when filling water), and the water can be added to the marked (211 maximum water level) in the middle of the water tank.
2. Put the suction pump of the main machine into the bottom of the water tank, then put the main machine on the water tank and close it. Then plug the power plug of the machine into the socket. Before power on, make sure that the working voltage of the machine is consistent with the voltage used;
3. Access the power supply of AC 110V~ 240V/50Hz. When the buzzer rings, it means the power has been switched on.
4. Before moving the humidifier, please stop using it, turn off the power switch, and pull out the power plug, and the whole machine will move together; please do not move the humidifier during the working state, so as to avoid abnormal operation of the humidifier and failure of the humidifier.

Note: Please add clean tap water or purified water below 40 °C .

**Instructions for use and installation**



1. Take out the protective sleeve of the suction pump from the main engine of the extraction machine
2. Put the machine suction pump into the bottom of the water tank and place the corresponding interface in balance
3. Open the upper cover of the main engine for water injection, and pay attention not to be higher than (211 maximum water level)
4. Plug in the power cord and start the machine

50X30mm

Ultrasonic humidifier with water added to water circulation	
Specification and model: BE-J001	Rated power: 110W
Rated voltage: 110V~240V	Tank capacity: 21L
Rated frequency: 50Hz	Noise: ≤ 35dB (a)
Maximum atomization amount: 2000ml/h	
Humidification efficiency grade: B	
Executive standard: G B 4706. 48-2009 GB 4706. 1-2005	
Manufacturer: Zhongshan Banger Electric Appliance Factory	