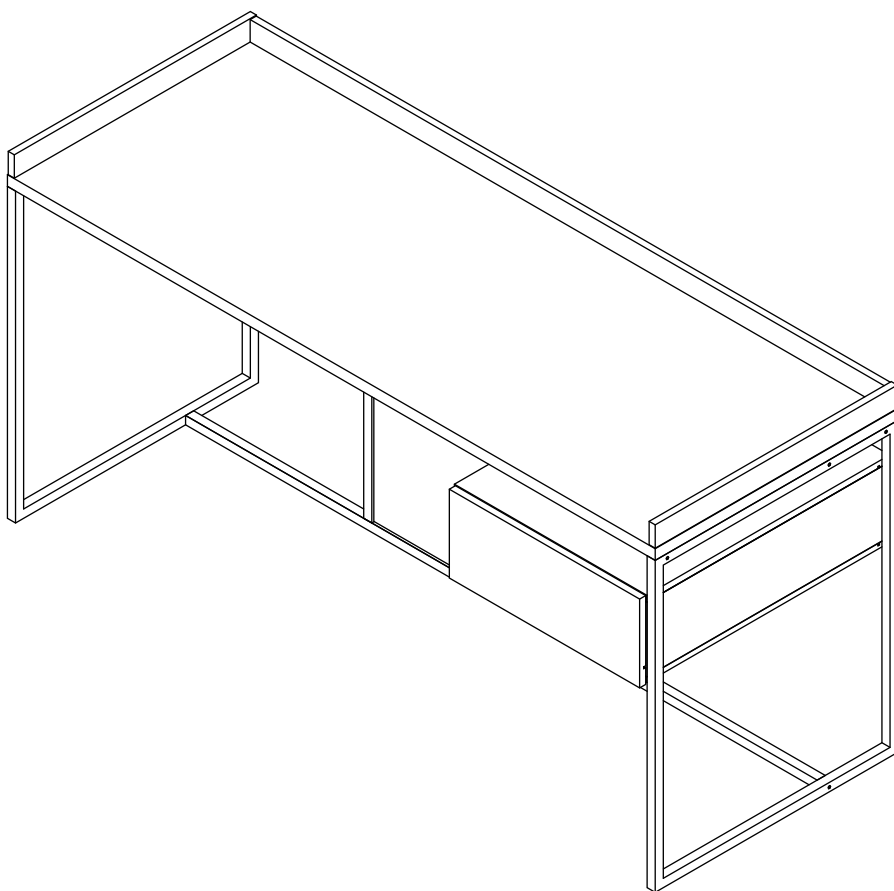
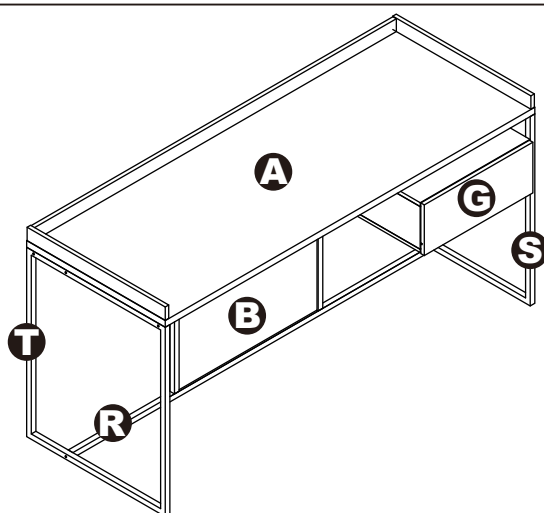


# ASSEMBLY INSTRUCTIONS



DESK

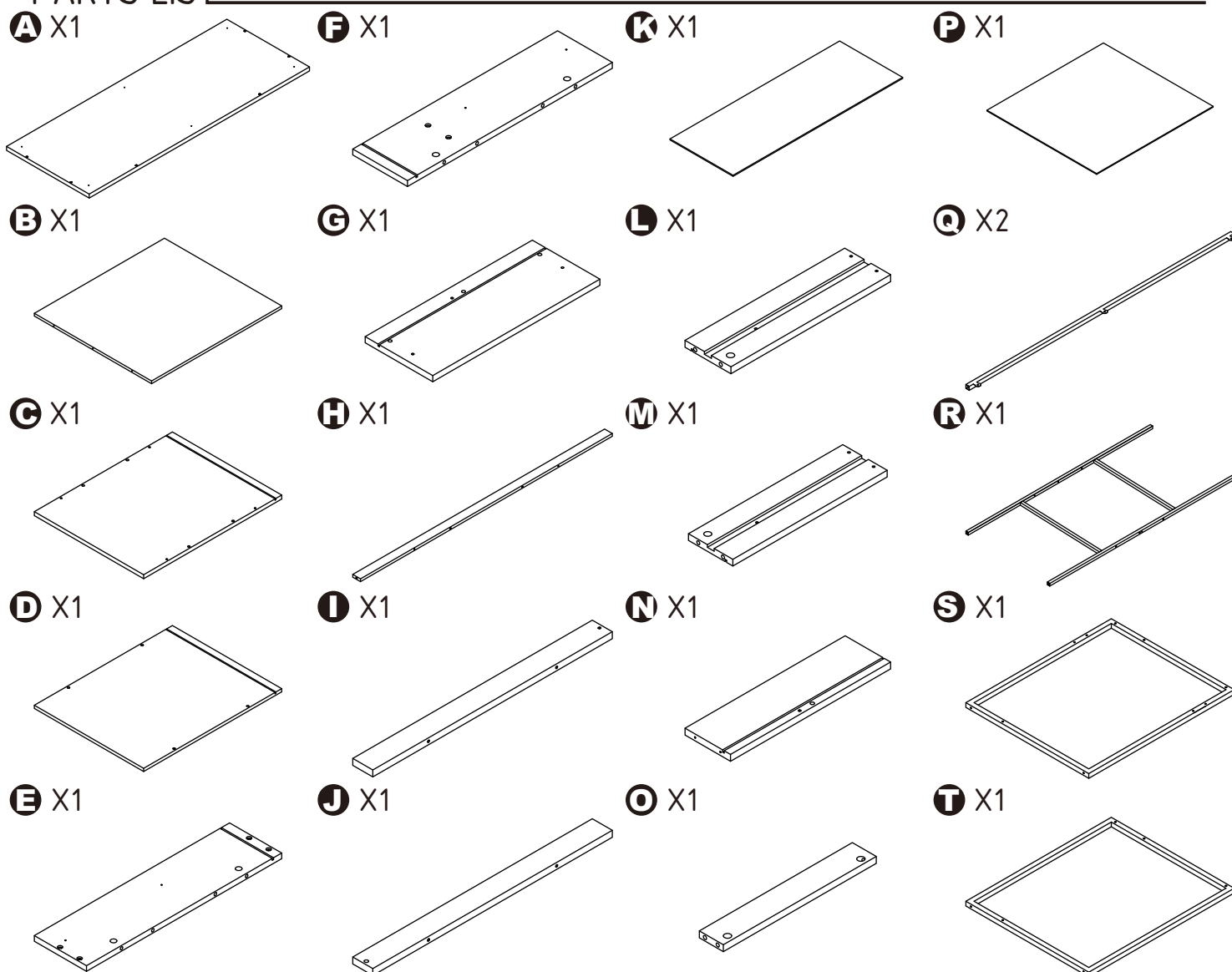
# DESK



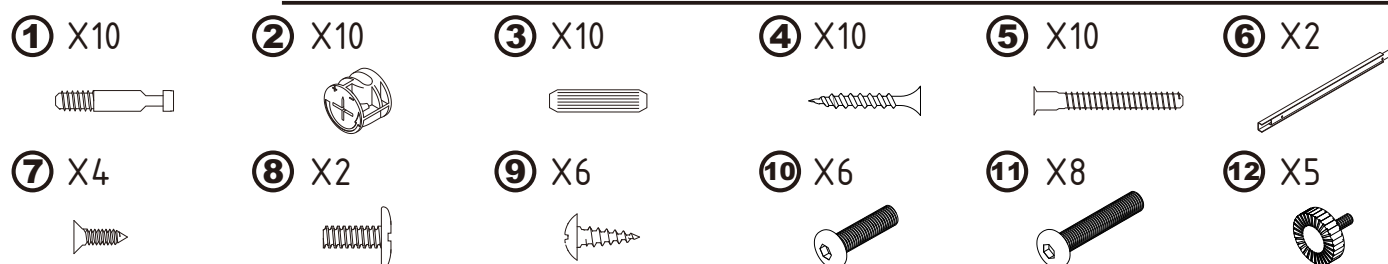
## DIMENSIONS

Width - 63"  
Depth - 24.21"  
Height - 30.91"

## PARTS LIST



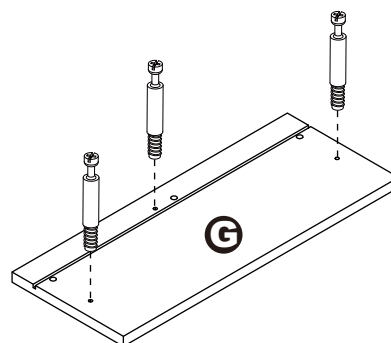
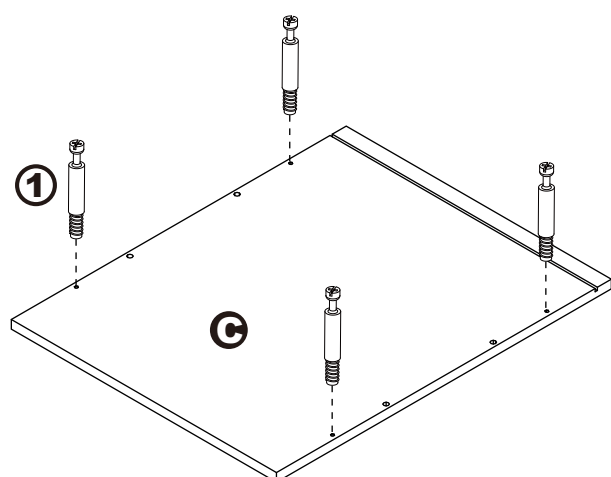
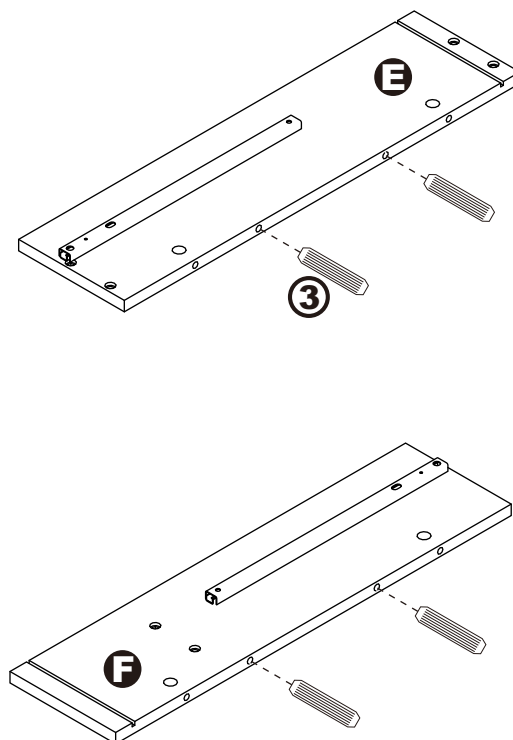
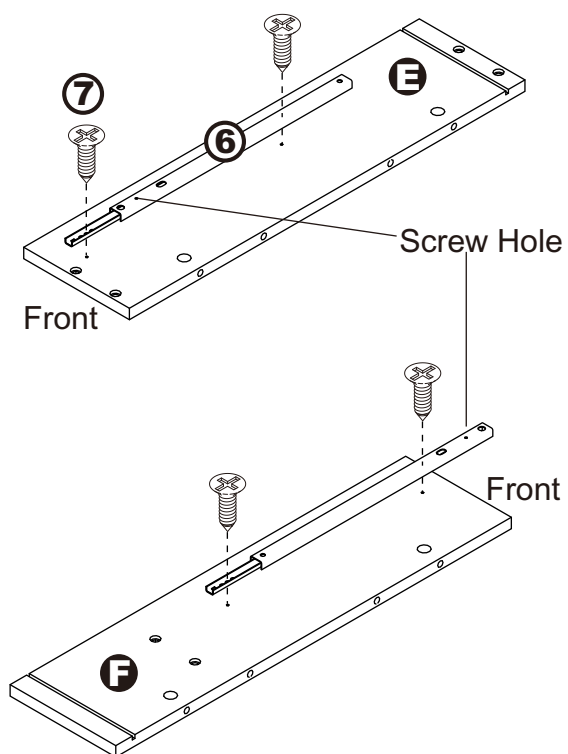
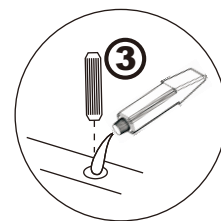
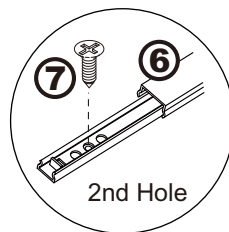
## HARDWARE LIST



# ASSEMBLY INSTRUCTIONS

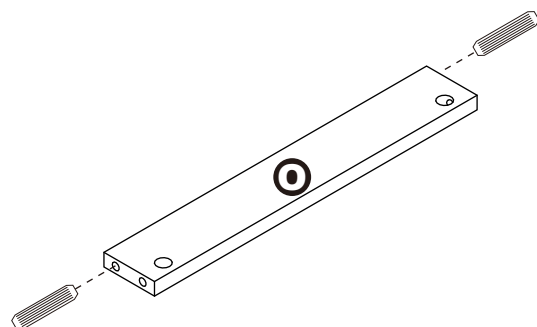
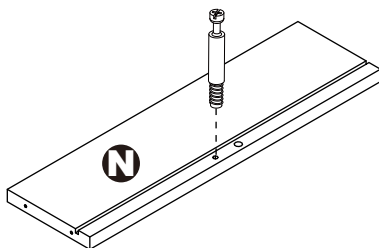
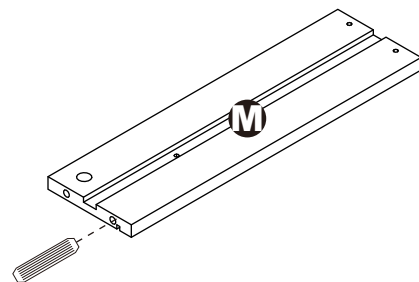
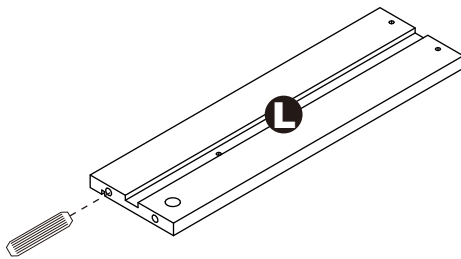
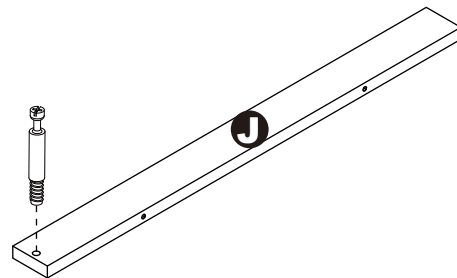
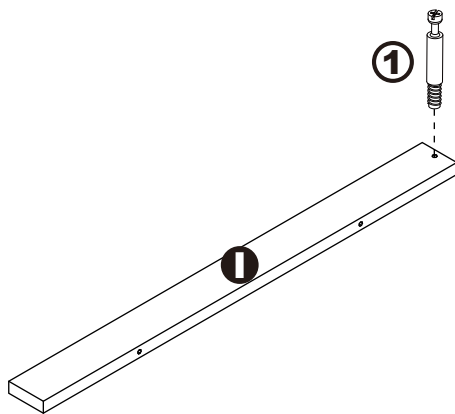
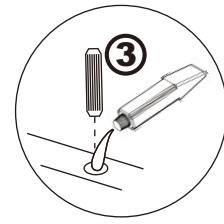
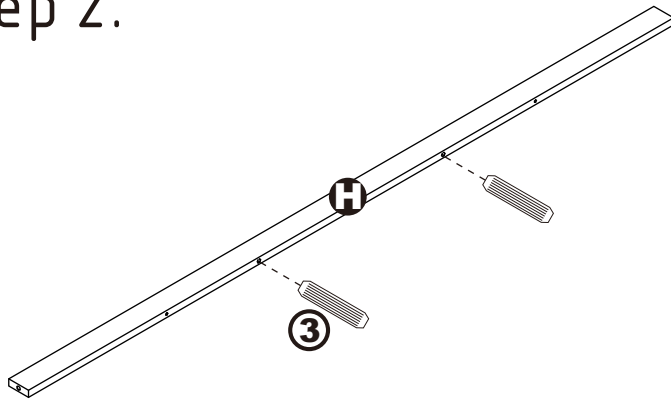
## Step 1.

Push runner to see screw holes on the other end.



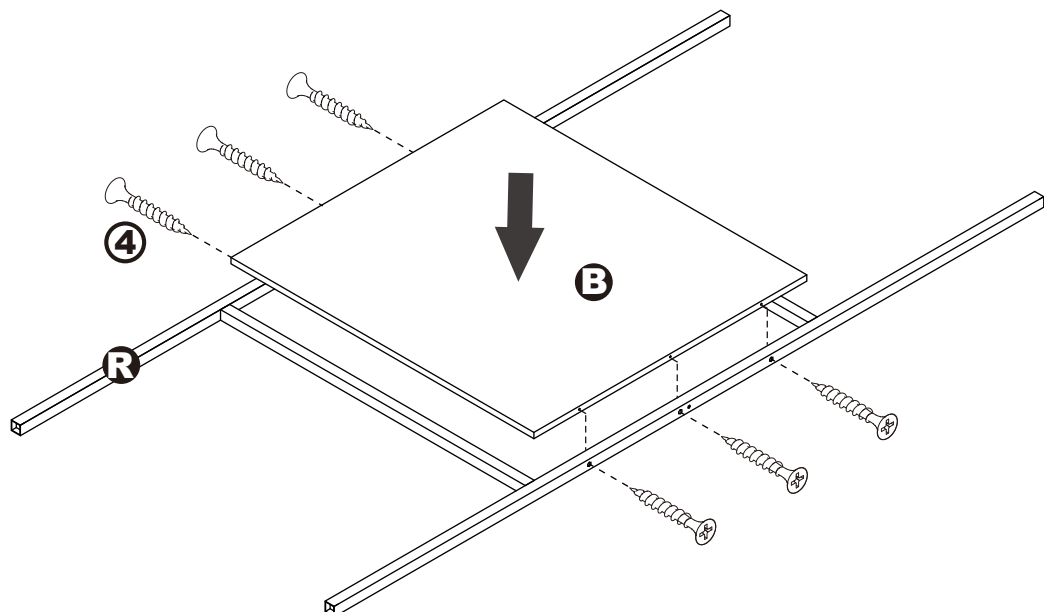
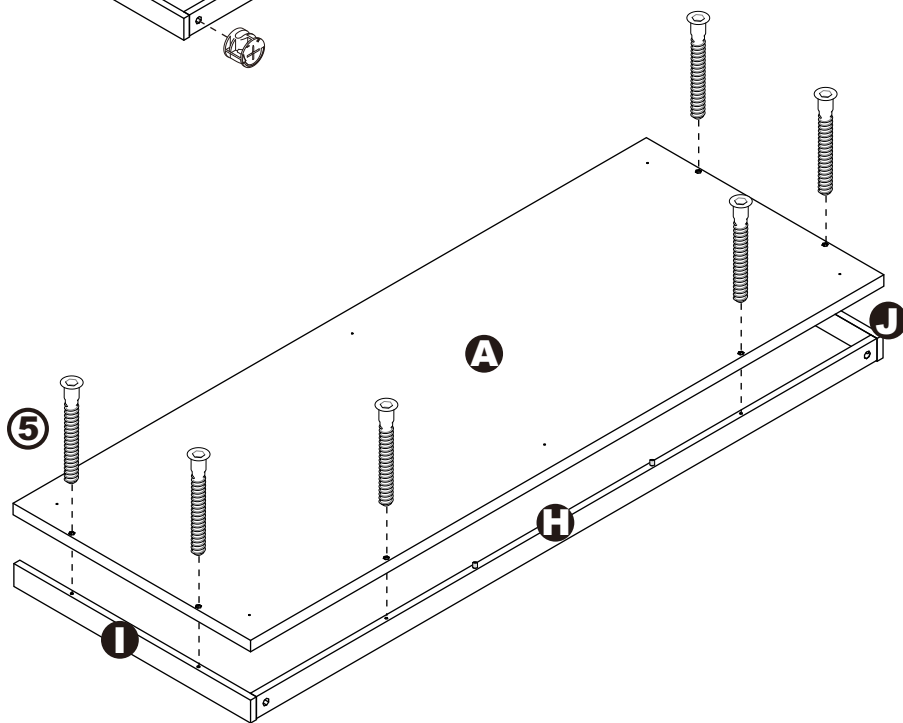
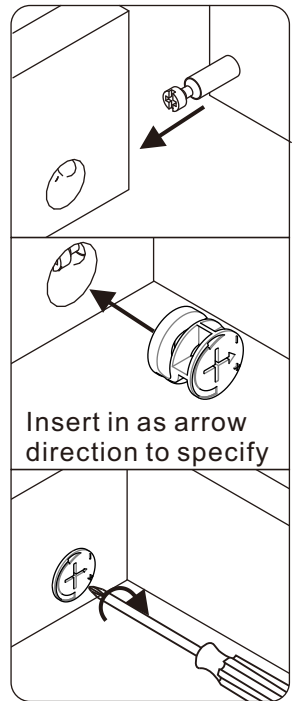
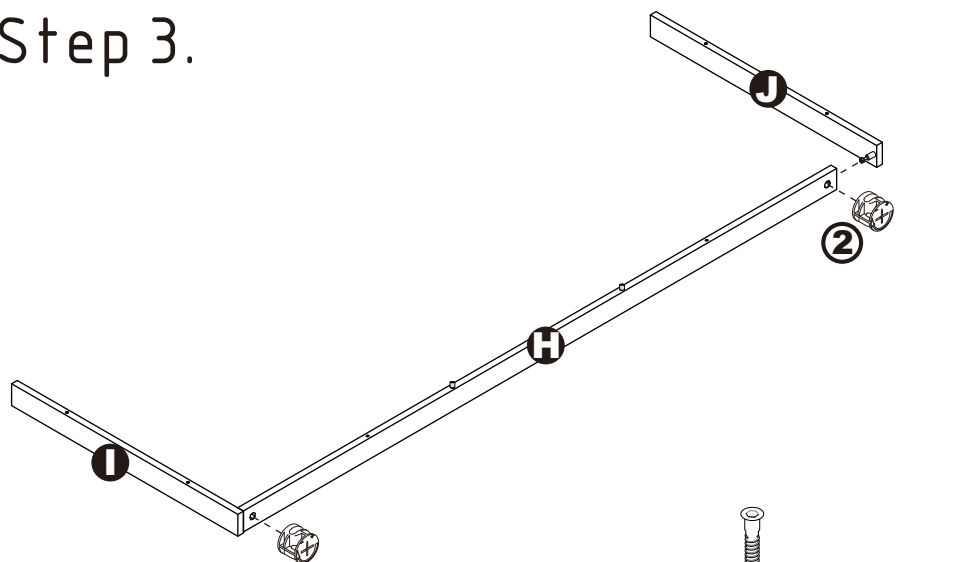
# ASSEMBLY INSTRUCTIONS

## Step 2.



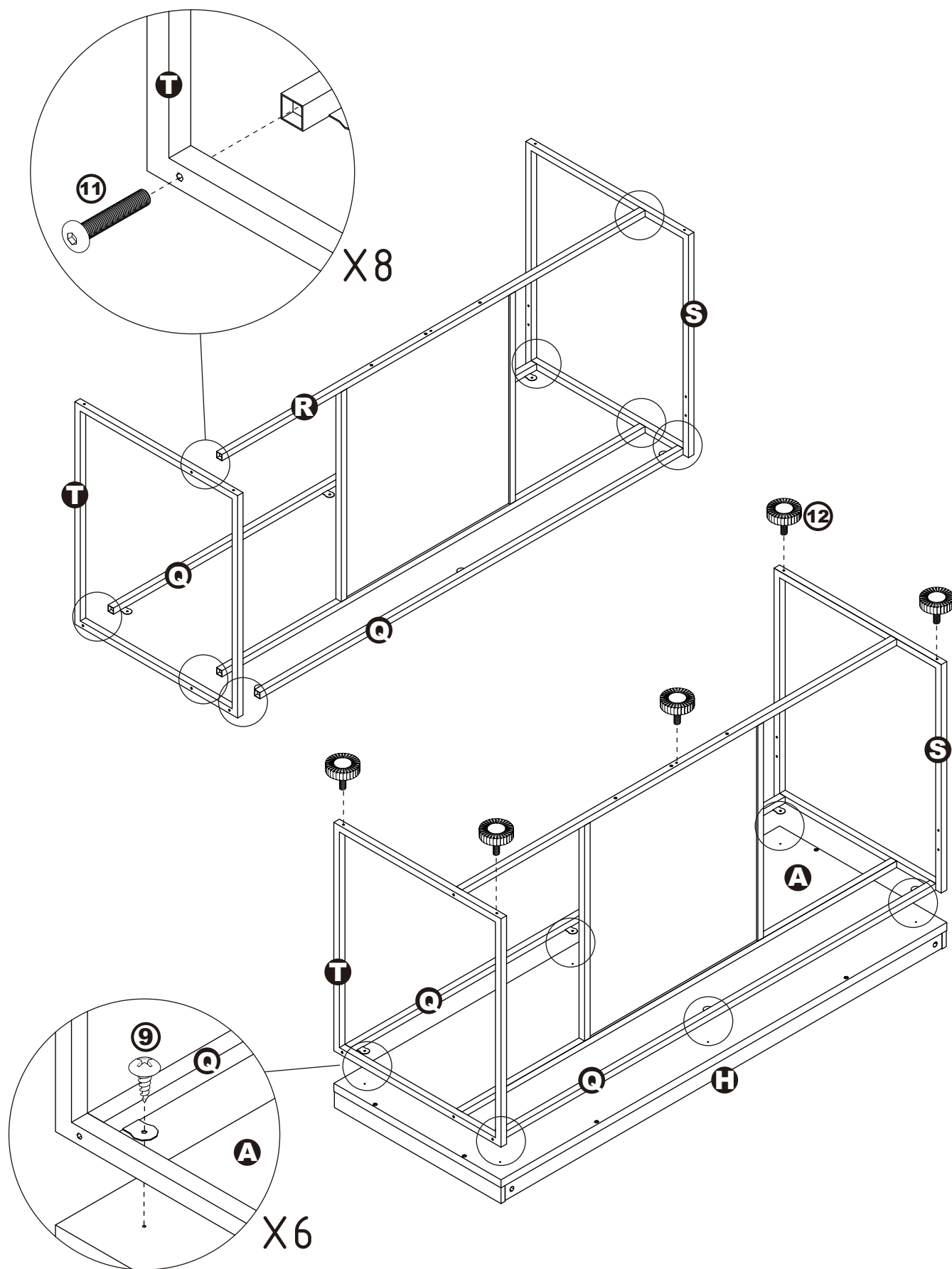
# ASSEMBLY INSTRUCTIONS

## Step 3.



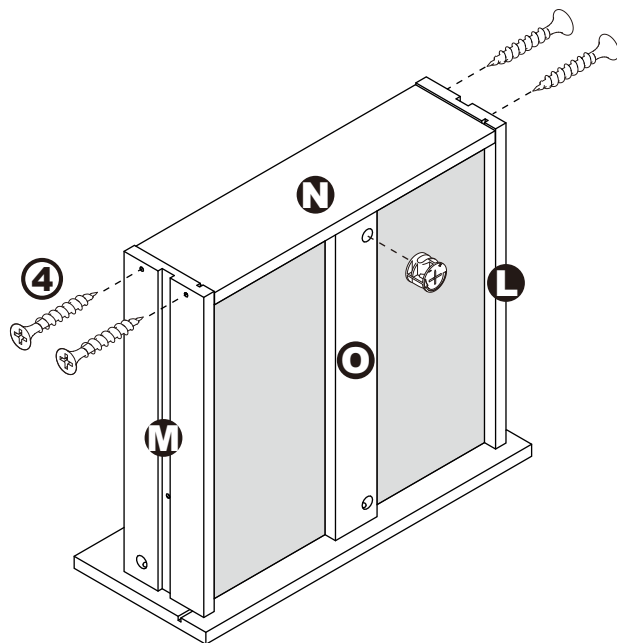
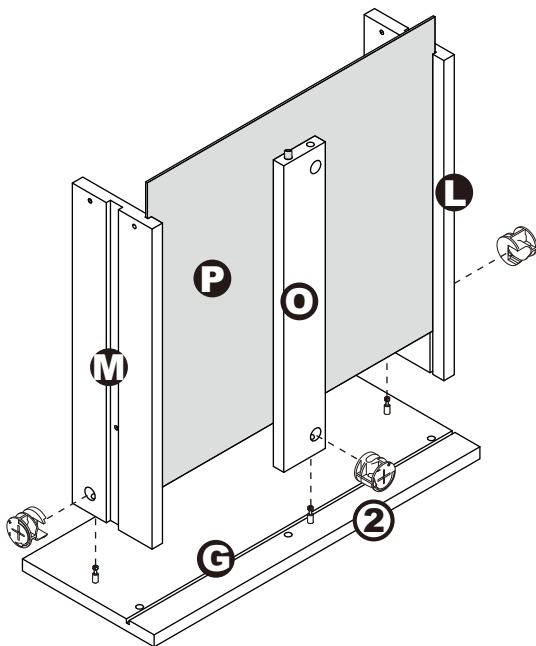
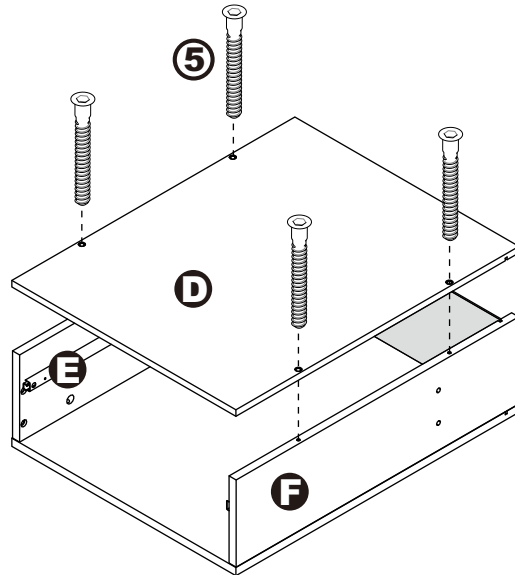
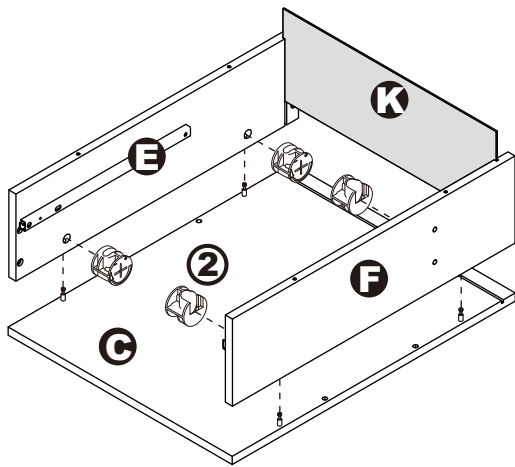
# ASSEMBLY INSTRUCTIONS

## Step 4.



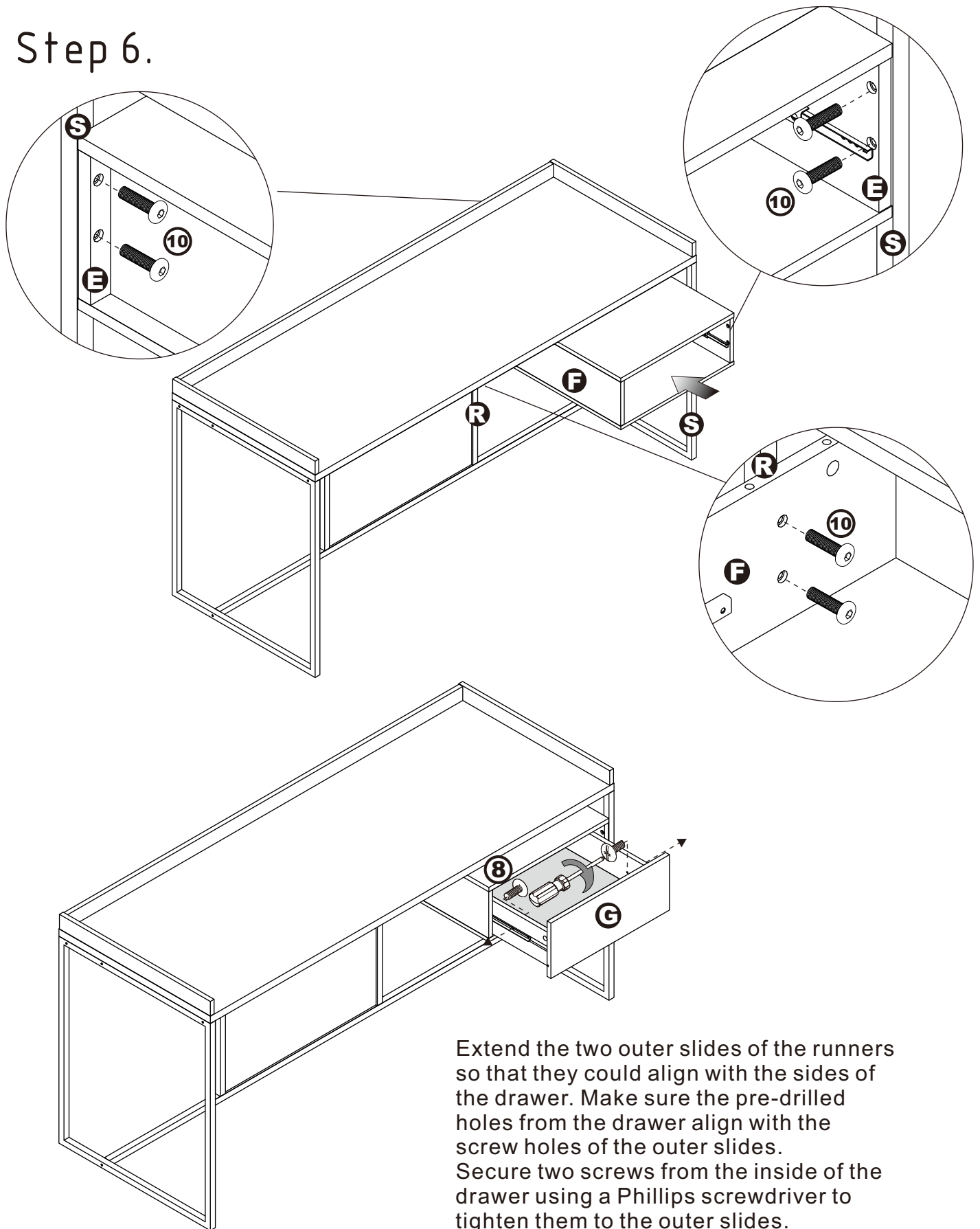
# ASSEMBLY INSTRUCTIONS

## Step 5.



# ASSEMBLY INSTRUCTIONS

## Step 6.



Extend the two outer slides of the runners so that they could align with the sides of the drawer. Make sure the pre-drilled holes from the drawer align with the screw holes of the outer slides. Secure two screws from the inside of the drawer using a Phillips screwdriver to tighten them to the outer slides.

## ASSEMBLY IS COMPLETED

Make sure the product is rested on a flat surface and does not feel loose or wobbly. If it does, double check that the bolts/screws are secured and properly tightened.