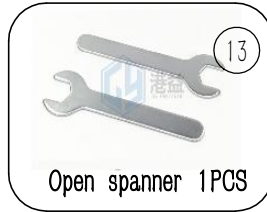
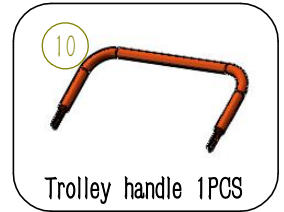
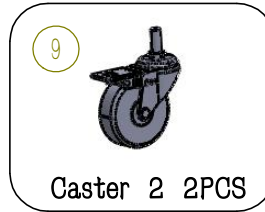
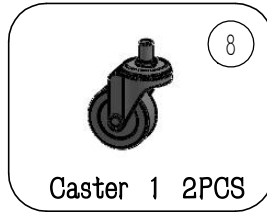
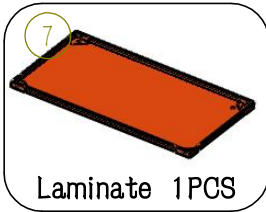
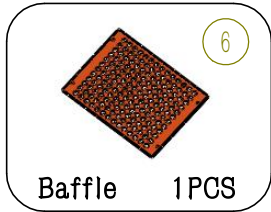
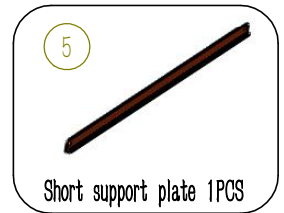
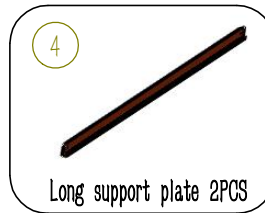
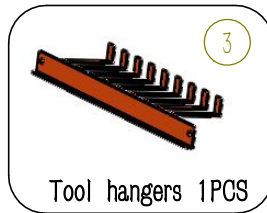
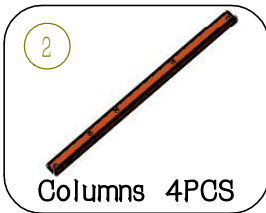


Product Assembly Instructions

First, Product overview and accessories list

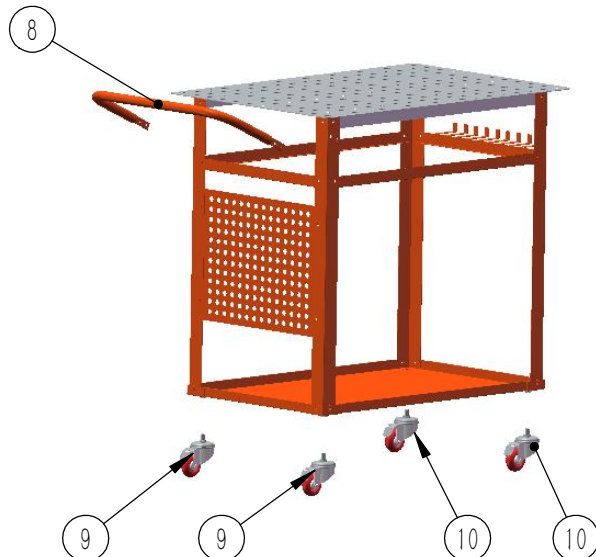


Second, product accessories list



After unpacking, please follow the diagram below to assemble the product, Note:

1. the picture is the product accessories list,
2. unpack, corresponding to the picture above to check whether the accessories are complete,
3. there is a free installation wrench in the accessories, please pre-check after unpacking.



Product Assembly Instructions

First. Product overview and accessories list



Second. product accessories list



Welding table panel 1PCS



Install Angle 1 2PCS



Install Angle 2 2PCS



Support leg 1 4PCS



Support leg 2 1PCS



Handle 1PCS



Bolt M 6 * 16 10PCS



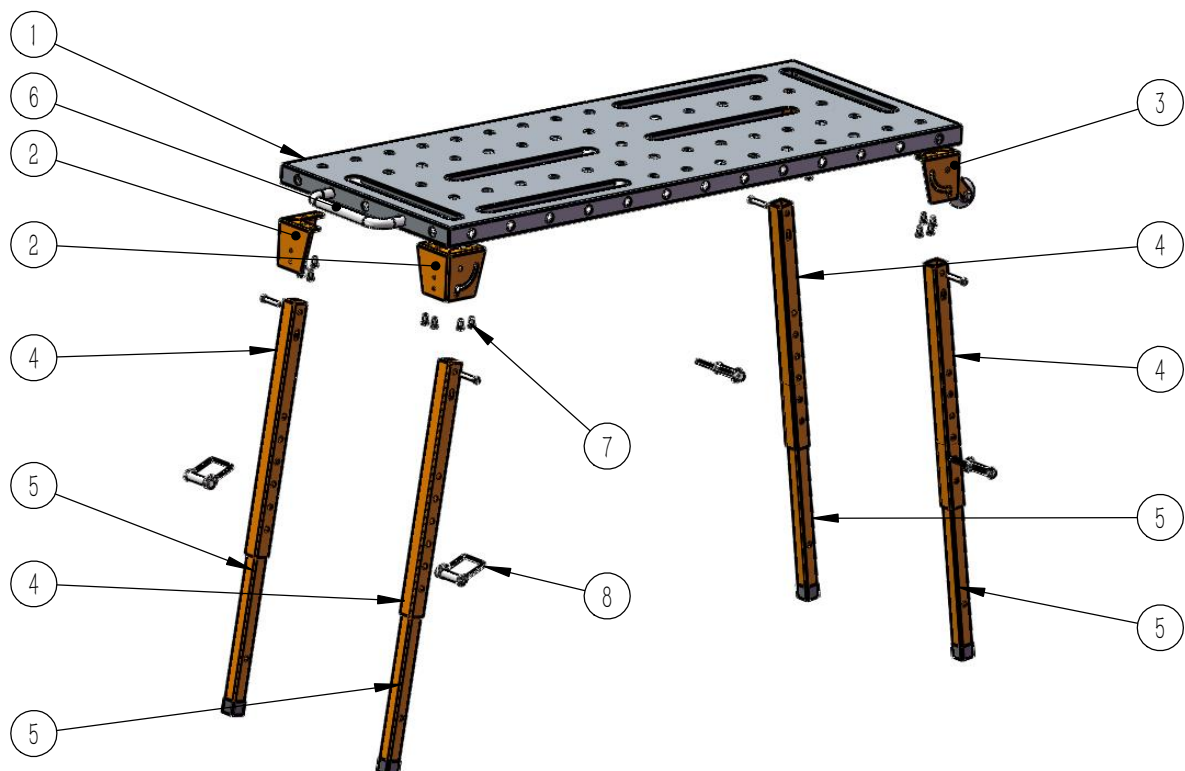
D pin 4 PCS



Open spanner 1PCS

After unpacking, please follow the diagram below to assemble the product, Note.

1. the picture is the product accessories list,
2. unpack, corresponding to the picture above to check whether the accessories are complete,
3. there is a free installation wrench in the accessories, please pre-check after unpacking.



Product Assembly Instructions

First. Product overview and accessories list



Welding table 36*18in 1200BL

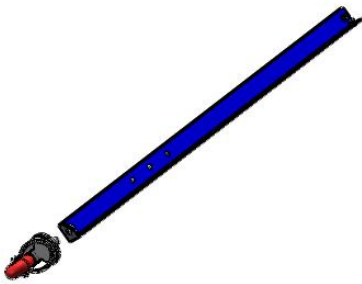
Welding table 36*18in 1200BL(2)

Welding table 36*24in 1320BL

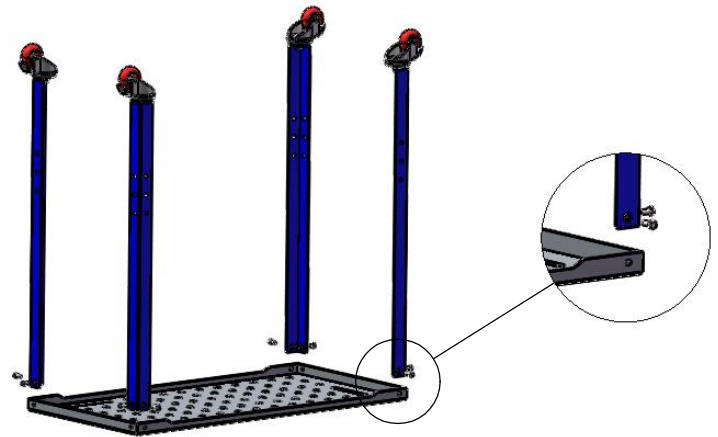
Welding table 36*24in 600BL

Second. product installation steps

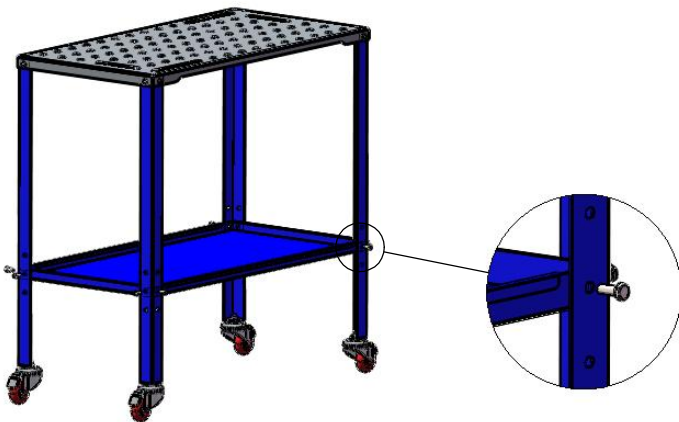
Note: The installation steps and structure of the above 3 products are similar, so we will use the welding table 36 * 24 1200 pounds(2) as an example for assembly.



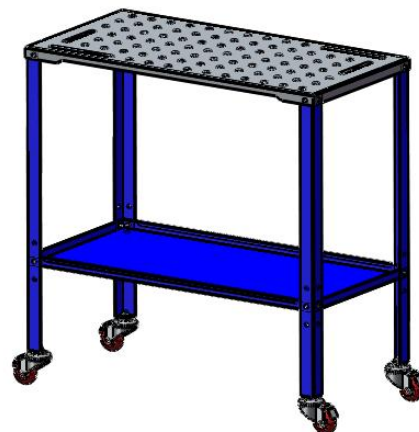
The first step: the first product of the 4 posts and Casters for assembly, in turn on the side, waiting for the next step of the installation,



Step 2: put the product welding panel on the ground, pay attention to protect the surface to prevent scratches, in turn, install the already installed column with casters on the panel, pay attention to: Don't lock the screws when installing, prepare for laminate installation,



Step 3: Install the laminate in sequence as shown in the diagram. Note that when installing, make the laminate parallel and install the laminate according to the holes you need, avoid the rework problem caused by the insufficient height of the laminate in the use process,



Step 4: lock all the screws in the process of assembly in order to ensure the firmness and stability of the product in the process of use and the product installation is completed. In the subsequent use of the process, when the need to fix the position of the casters can be locked. Pay attention to the security during the use.