

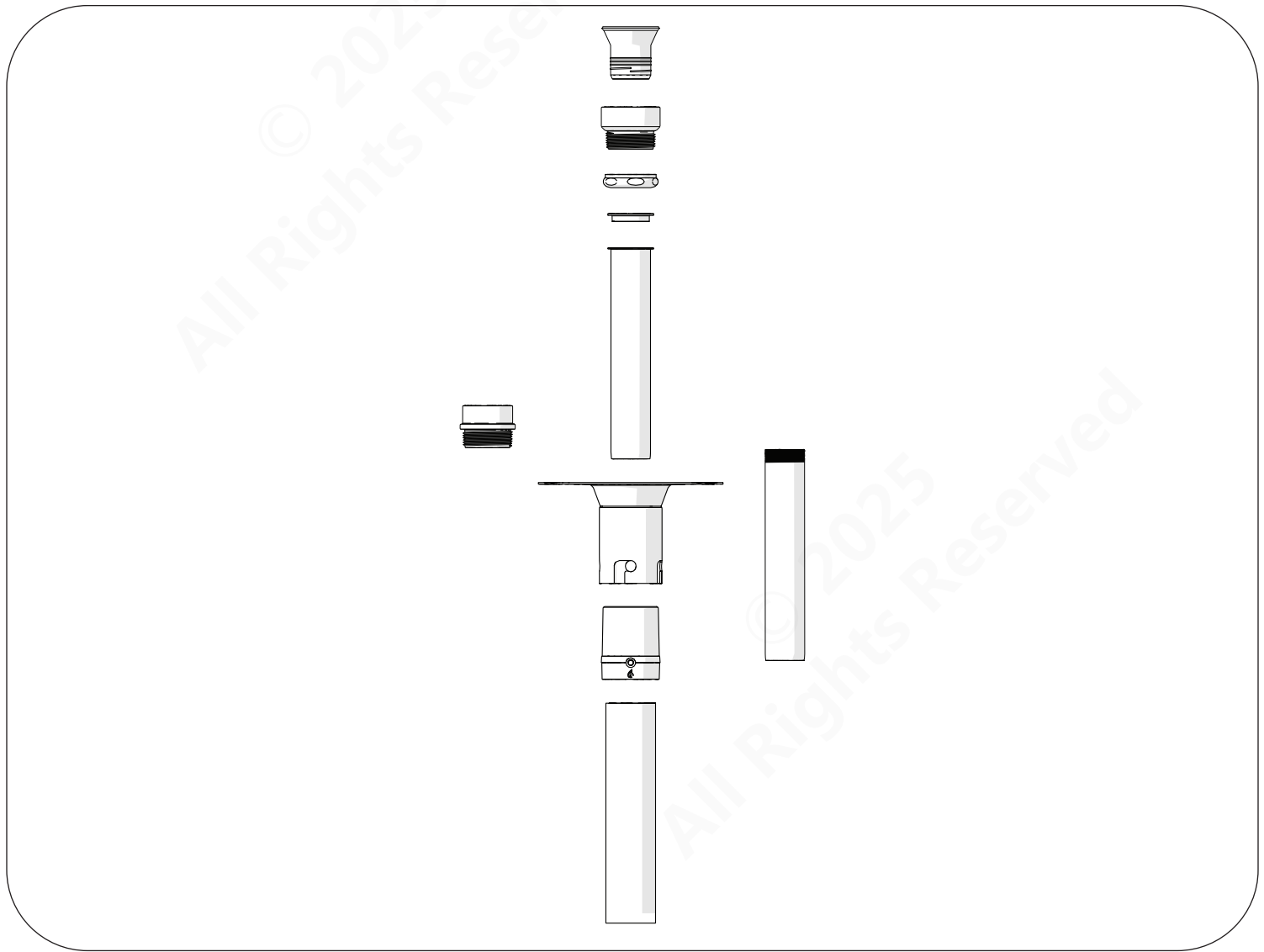


QUICK CONNECT PVC FREESTANDING TUB DRAIN

INSTALLATION INSTRUCTIONS

IMPORTANT!

DreamLine reserves the right to alter, modify, or redesign products at any time without prior notice for the purpose of product improvement and customer experience. Please refer to DreamLine's website for the latest technical drawings, installation manuals, warranty information, or additional product details.



Questions?

Please contact DreamLine Customer Support
See DreamLine.com for hours of operation

Support@DreamLine.com

1-866-731-2244



PLEASE REVIEW THIS ENTIRE MANUAL PRIOR TO INSTALLATION



IMPORTANT

- DreamLine® reserves the right to alter, modify, or redesign products any time without prior notice for product improvement and customer experience. Please refer to the model's webpage on DreamLine.com for the latest technical drawings, installation manuals, warranty information, or additional product details.
- This product should be installed by someone familiar with the construction requirements for this type of project and the care necessary for the safe installation and operation of the product.
- The safety of any installation is the responsibility of the installer.
- Professional installation recommended. (*All Models*)
- Professional installation required. (*Enigma Series*)
- To prevent damage or serious injury, **Do Not** lean against the installed panel/door/glass.
- To prevent damage or serious injury: Do Not attempt to lift or move a heavy lite of glass alone. Use an assistant and/or a professional-grade glass suction cup.
- The installation of some models may require drilling down into the threshold. Contact the manufacturer of the base, tub, or threshold material with any questions regarding the drilling of holes into their product.
- All drawings in this installation manual are for illustrative purposes only and are not drawn to scale.

TEMPERED GLASS WARNING

- **Your Shower Door Glass Could Shatter Without Warning if Improperly Installed or Mishandled.**
- **Do Not** install or operate a shower door if the glass has chipped corners, slivered edges or is otherwise damaged and/or has been dropped or banged into a hard surface such as tile, marble, or glass.
- **The main causes of tempered glass breakage are:**
 - Improper handling, storage or installation
 - Misuse/abuse
 - Lack of maintenance
 - Failure to replace damaged glass
- **Improper handling during storage, unpacking and installation:**
 - Corners and edges are the most susceptible area to damage on a lite of tempered glass and should be protected and handled with care during storage, unpacking, installation and operation. A concentrated point of pressure or impact with a surface harder than itself may cause the tempered glass to shatter. The tempered glass may release immediately, within several hours, or even days later.
- **Incorrect installation of door hardware, rollers, hinges, channels, stopper, or glass:**
 - Improper installation may include: loose hardware and/or lack of proper gaskets between the hardware and glass. Additionally, improper alignment of guide rails, wall profiles, or other hardware during installation or operation may place stress on the glass edges and cause it to break.
 - This product must be installed by a professional and experienced installer familiar with the safe handling of tempered glass.
- **Improper use of this product:**
 - Aggressively opening or closing the door may cause trauma to the glass, which can lead to breakage. This may occur immediately or hours or even days later.
- **The shower door hardware and glass should be inspected periodically:**
 - Instruct the homeowner how to perform a periodic inspection of the shower hardware and glass - some minor adjustments may be necessary based upon the use (or misuse) of the shower door. Ensure that the hardware remains tight and that the door alignment and operation are correct. Any adjustments should be made upon discovery to prevent damage to the product.
 - Additional considerations should be given to the installation of frameless tempered glass products in households with young children or an elderly person due to an increased chance of improper handling. In such cases, alternatives such as shower curtains or grab bars should be considered.

GENERAL PREPARATION

- After opening all boxes and packages, read this introduction carefully. Check that all the items are included in the package by marking off the components on the "Detailed Diagram of Product Components" page. Examine all boxes and packages for shipping damage. If the unit has been damaged, has a finishing defect, or is missing parts, please contact our Customer Support department within 3 business days of the delivery date. **Please note that Dreamline® will not replace any damaged products or missing parts free of charge after 3 business days or if the product has been installed.** Please contact DreamLine® if you have any questions.
- **Please note that you should refer to your local building codes with questions on installation compliance standards. Building and plumbing codes may vary by location, and DreamLine® is not responsible for code compliance standards for your project and will not accept any returns.**
- If this unit is going to be installed in a new construction, install all the required plumbing and drainage before installing the shower. **Use a competent and licensed (if required by local code) plumber for all plumbing installation.**
- Make sure that prior to beginning the installation, the surfaces are leveled and solid and will be able to support the total weight of the unit. Also make sure the walls are at right angles. Irregular installation surface level, radius in the corners, or improper angle of side walls will result in serious problems for your installation. Please note that some adjustments and drilling will be necessary during the installation process.
- Protect all primary surfaces of the product during installation. Never set your glass down directly onto a tile floor. Leave corner protectors in place until it is necessary to remove them. Always use a piece of wood or cardboard to protect the bottom edge and corners of the glass prior to and during installation.
- This unit must be installed upon a finished threshold and against finished walls.
- **DreamLine® shower doors are not designed to be installed into a fiberglass surround due to the radius corners and lack of a solid surface to mount the hardware.**

WARNING: TO AVOID THE RISK OF DAMAGE OR INJURY:

- **Follow all recommendations and requirements as shown in the installation instructions.**
- Perform a thorough inspection of the glass and all parts for any damage prior to installation. Any damage to tempered glass can cause breakage. **Do Not install damaged glass!**
- **Do Not** install or operate a shower or tub door if the glass has chipped corners, slivered edges, is otherwise damaged. **Do Not** install or operate a shower or tub door that has been dropped or banged into a hard surface such as tile, marble, or glass.
- **CAUTION:** Contact with any hard surface can damage tempered glass and cause it to shatter.
- This product uses tempered glass. Glass cannot be cut after it has been tempered. **Do Not attempt to cut tempered glass!**
- DreamLine® Glass Shower Doors, Tub Doors, Inline Panels, and Return Panels can shatter due to improper handling or lack of maintenance. Conduct periodic inspections of glass and all parts for possible damage, missing or loose parts.
- Always wear proper safety equipment such as safety goggles, work gloves, and appropriate footwear during the installation process.
- **WARNING: Risk of leakage and/or damage.** Follow all instructions regarding the application of silicone sealant or caulk. Allow 24 hours for the sealant to cure before the initial use of the shower or tub product. Follow the silicone manufacturer's recommendations regarding the use of their product.
- **Thoroughly read these instructions before installing or using this product.**
- **Leave this manual for the end-user of the product.**



This product should be installed by someone familiar with the construction requirements for this type of project and the care necessary for the safe installation and operation of the product.

Installation Steps

1. Drill a 4" hole in your wooden sub-floor.



2. Measure the distance from the inside of the P-Trap to the top of the floor. (P-Trap not included)



3. Cut the ABS or PVC 1-1/2" pipe 3" shorter than the distance between the floor and the P-Trap.

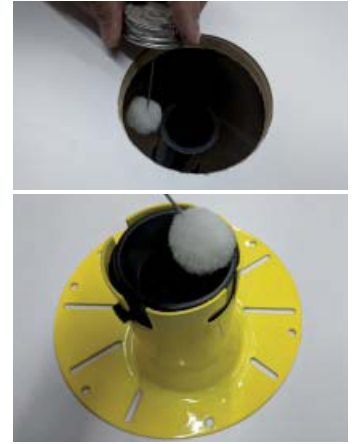


4. Apply glue to the outside of the ABS or PVC 1-1/2" pipe and to the inside of the P-Trap.

Insert the pipe into the P-Trap.



5. Apply glue to the outside of the ABS or PVC 1-1/2" pipe and to the inside of the Drop-In drain insert.



6. Slide the Drop-In Drain on the ABS or PVC 1-1/2" pipe making sure **it sits flat** on the floor.

*Please refer to acceptable plumbing code in regards to use of protective membrane/underlayment.

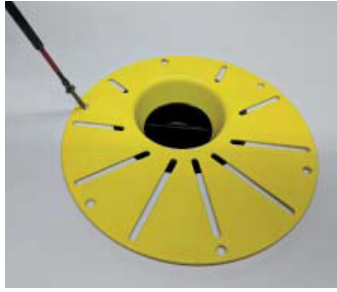


7. Insert the Drop-In Drain cap **firmly** into the Drop-In Drain.



Installation Steps (continued)

8. Secure the Drop-In Drain to the sub-floor with **screws** or **cement**.



9. Install your flooring surface around the **opening** of the Drop-In Drain.

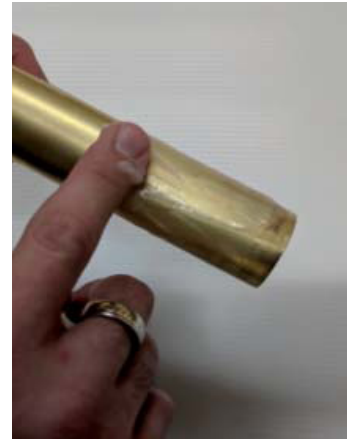
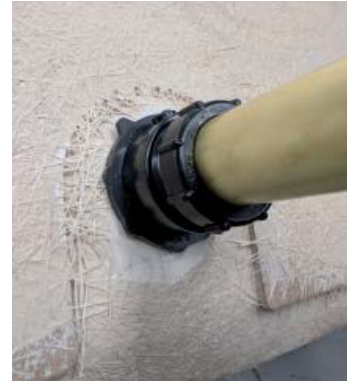


10. Remove the Drop-In Drain cap with a **channel lock plier**.



11. Apply provided lubricant inside the Drop-In Drain.

*Please only proceed with this step once the pressure test has been performed, if needed.



PLEASE REFER TO LOCAL ACCEPTABLE PLUMBING CODE FOR INSTALLATION.