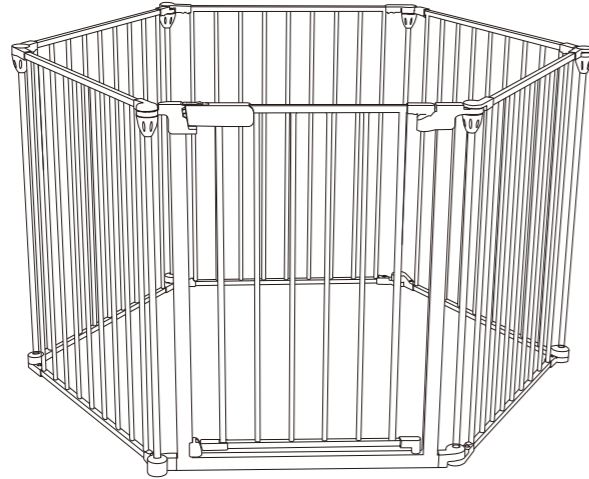


MANUAL

3 IN 1 PLYPENA



IMPORTANT! READ AND FOLLOW THESE INSTRUCTIONS CAREFULLY AND KEEP FOR FUTURE REFERENCE

Instruction

Please read, follow and retain this instruction booklet thoroughly to ensure correct installation and for future reference. Please inspect your safety playpen upon receipt. Please check that all parts are present, correct and in good order. If you notice any damage or any parts missing, do not assemble. Either return to place of purchase or contact us directly. We recommend that you carry out the installation away from young children as some of the smaller parts may present a choking hazard.

Important Information

Ensure the safety barrier is attached between two clean structurally sound surfaces and fixed with wall plugs. This product comes without a base. Before using the playpen, customer should prepare a hexagonal mattress or pad which must be not more 23 inches side length and not more than 5.5 inches thick. Please check the playpen on a regular basis to ensure gate and parts are all in proper working order. Ensure appropriate fixings are used for drywall, wood, brick etc. Wall plugs are provided. If you are unable to secure to the wall satisfactorily, consult with a hardware store for adequate fittings.

Disclaimer

As safety gate which has been subjected to misuse, abuse, abnormal use, excessive wear and tear, improper assembly, negligence environmental exposure, alteration or accident or has had its serial number altered or removed invalidates any and all claims against the manufacturer. Any damage to property during installation of your playpen is the sole responsibility of the end user. Failure to follow these warnings and the instructions could result in serious injury or death.

WARNING

When used as a playpen

This playpen complies with EN 12227:2010.

This product has been designed for domestic use only with children up to 24 months of age.

WARNING: Do not place the playpen close to an open fire or other heat source.

WARNING: Ensure that the playpen is fully erected and all the locking mechanisms engaged before placing your child in the playpen.

WARNING: Do not leave anything in the playpen which may provide a foothold for climbing or create a danger of suffocation or strangulation.

WARNING: Do not use the playpen without the base:

△ If the height of the base is adjustable, the base should always be used in the lowest position as soon as the child is old enough to sit. Kneel or to pull itself up

△ Infants can suffocate in gaps between a mattress too small or too thick and products sides on soft bedding.

△ Never add a mattress, pillow, comforter or padding.

△ Never use a water mattress with this product.

△ Use a hexagonal mattress or pad which must be not more 23 inches side length and not more than 5.5 inches thick.

When used as a safety barrier

This safety barrier complies with EN 1930:2011-

This product has been designed for domestic use only with children up to 24 months of age

WARNING: Incorrect fitting or positioning of this safety barrier can be dangerous. **WARNING:** The safety barrier must not be fitted across windows.

WARNING: Do not use the safety barrier if any components are damaged or missing **WARNING:** Stop using the barrier if the child is capable of climbing it.

WARNING: Do not leave the gate of the barrier open at any time. Remove barrier if not in use for long periods.

△ When used as a barrier, the door closed and locks by itself.

△ This safety barrier is suitable for openings up to 320cm.

△ If the safety barrier is to be used at the top of the stairs it should not be positioned below the top level. If the barrier is to be used at the bottom of the stairs, it should be positioned at the front of the lowest tread possible.

When used as a playpen or a safety barrier

△ Adult assembly required. Install according to the manufacturer's instructions.

△ This product need to be closed manually: always check that it is correctly closed.

△ Never allow older children to climb on or over the barrier as this could result in an accident.

△ This playpen/barrier should be checked regularly to ensure they remain properly fixed and secure. Never use this product if there are any loose or missing fasteners, loose joints, broken parts or mesh/fabric. Check before assembly and periodically during use.

△ An additional or replacement parts should only be obtained from the manufacturer or distributor.

△ This product will not necessarily prevent all accidents. Never leave a child unattended.

△ A swing gate can trap small hands.

△ Do not remove the safety notices you may not always be the user.

△ Eventually your child will reach an age when they are capable of opening your gate. Children will develop physically and mentally at different rates, therefore it is important that you monitor your child's capabilities.

△ Retain these instructions as you may wish to reposition the playpen/barrier.

△ To clean use mild soap and wipe with a damp cloth.

△ Strinas can cause strangulation! Never place items with a string around a child's neck such as hood strings or pacifier cords. Never suspend strings over product or attach strings to toys.

△ Discontinue use of the product when child is able to climb or reaches the height of 35 inches (890mm).

△ Child can become entrapped and die when improvised netting or covers are placed on top of a product. Never add such items to confine child in product.

△ When child is able to pull to standing position, remove bumper pads, large toys, and other objects that could serve as steps for climbing out.

△ Never place product near a window where cords from blinds or drapes can strangle a child.

△ Always provide the supervision necessary for the continued safety of your child. When used for playing, never leave child unattended.

△ To reduce the risk of SIDS, pediatricians recommend healthy infants be placed on their back to sleep, unless otherwise advised by your physician.

△ Never substitute parts.

△ If refinishing, use a nontoxic finish specified for children's products.

△ The product, including side rail, must be fully erected prior to use.

SPECIFICATION

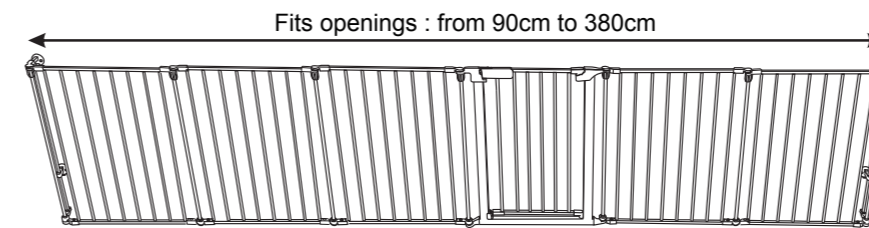
Net Weight : 13kgs Gross Weight: 14kgs

Fits openings: from 90cm to 380cm

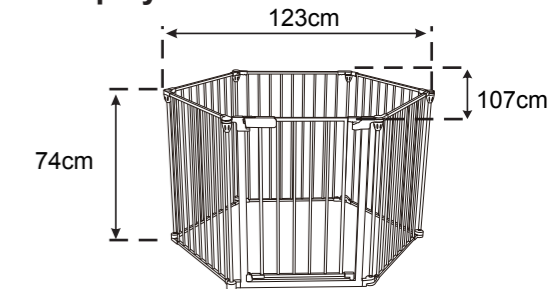
Material: Iron tube, ABS plastic

Width of each panel: 60cm High of each panel: 74cm

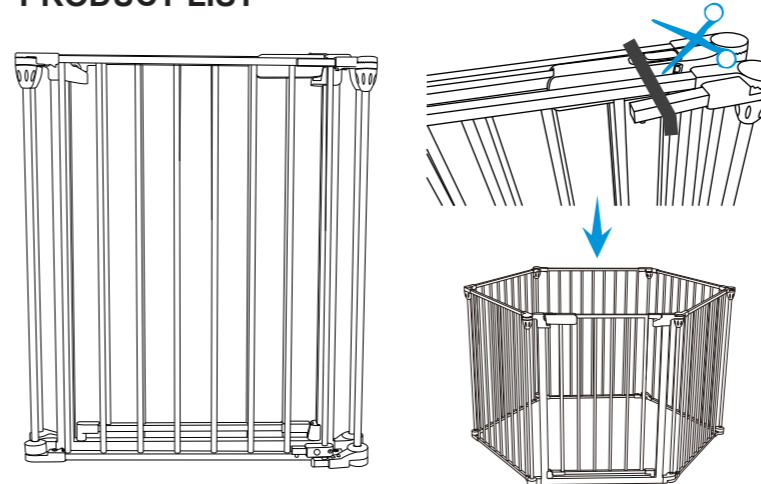
Use as safety fence



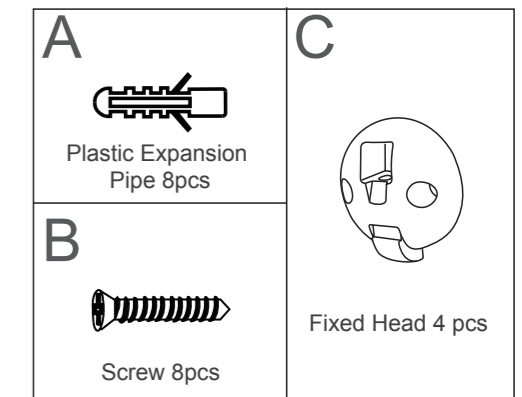
Use as playpen



PRODUCT LIST

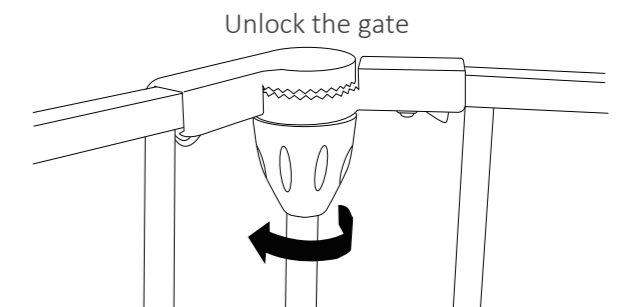
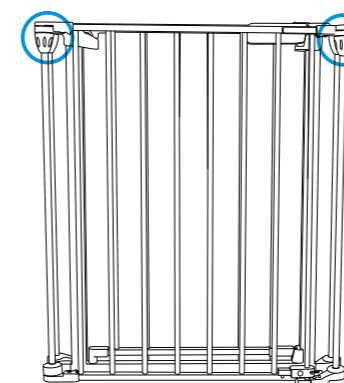


PARTS



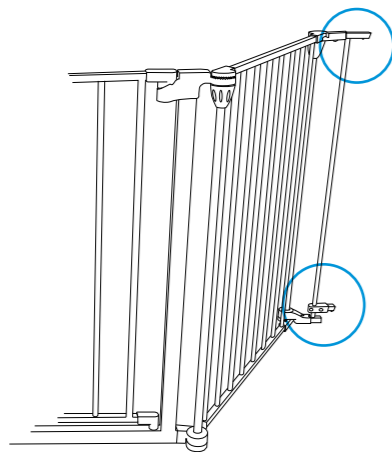
INSTALLATION GUIDE

STEP 1 UNLOCK THE KNOB

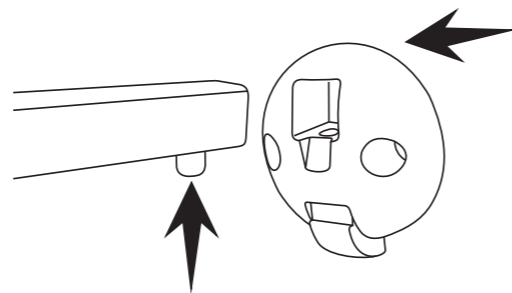


Rotate the four knob on anti-clock wise direction

**STEP 2
INSERT THE
FIX HEAD**



Unfold the gate panel, then insert the 4 pieces wall fix head.

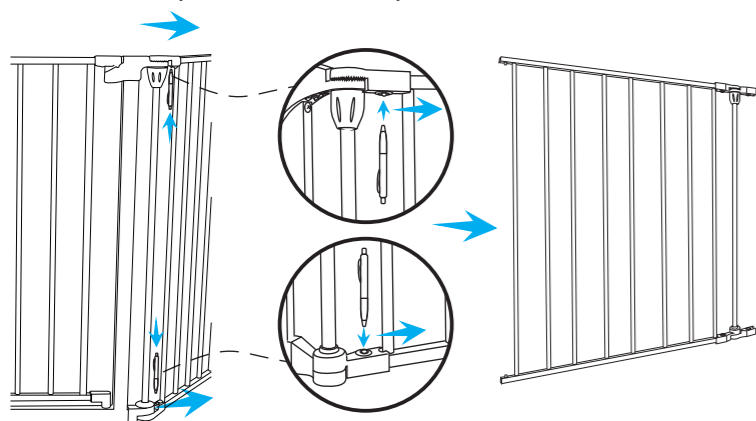


Press the button and insert the wall fix head.

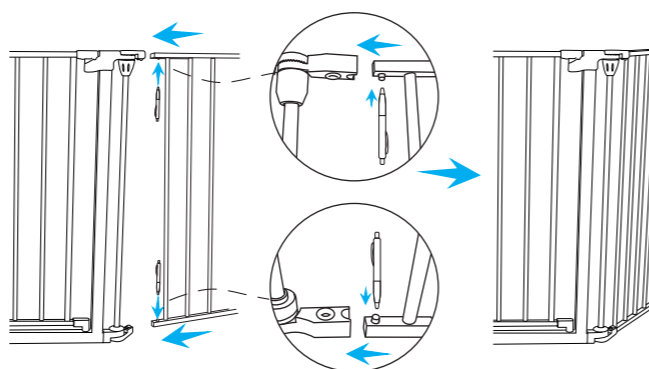
STEP 3 INSTALL METHOD(USE AS SAFETY FENCE)

Measure the installation width of your hallway, then increase or decrease the safety panels to fit the width.
(Notice: install width is from 90cm to 380cm)

Decrease the panels
Remove the panel like below picture shows

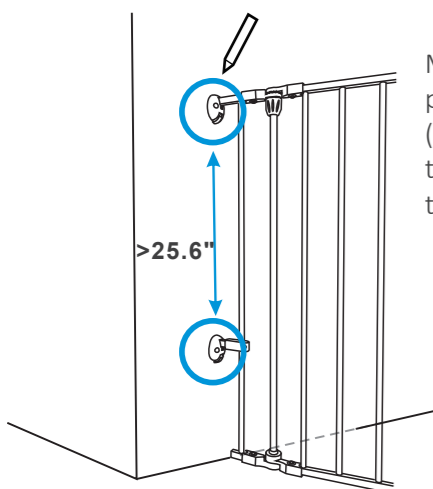


Increase the panels
Connect the panel like below picture shows

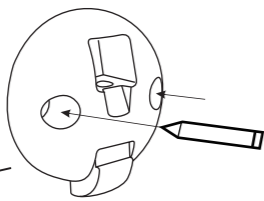


STEP 4 WALL FIXING

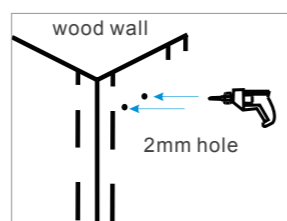
4-1



Mark the fix head's screw position with a pencil
(Note: the distance between the two fix head must more than 65cm)

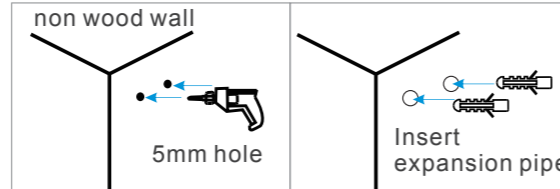


4-2-1



1, Use 2mm rotary shaft when install on the wood wall, then fix with screw.
Notice: the installation tool is not include

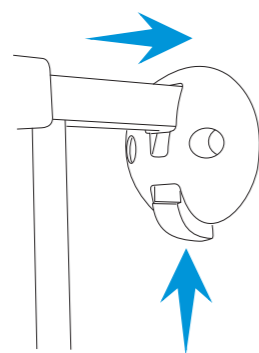
4-2-2



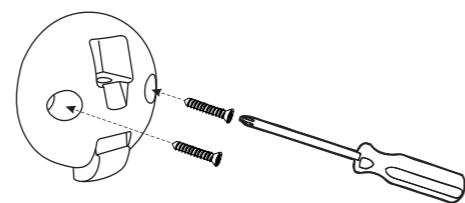
2, Use 5mm rotary shaft when install on the non wood wall, then insert with plastic expansion pipe, finally fix with screw.

4-3

Press the button on the bottom of the fixing head to remove the fixing head

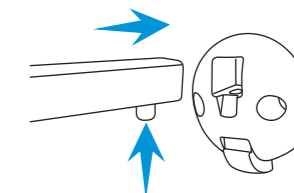
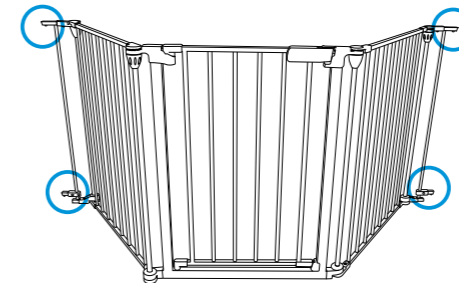


Insert the screw with the bolt driver



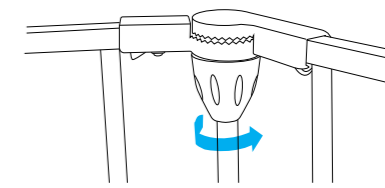
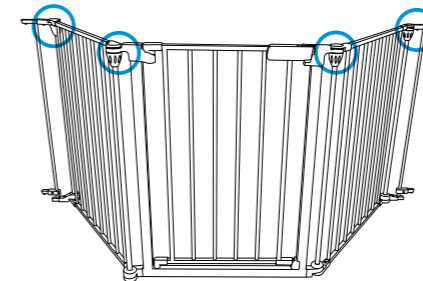
4-4

Press the button and insert the wall fix head.



4-5

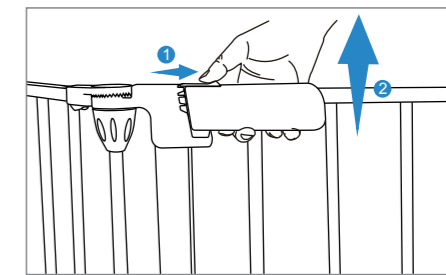
Rotate the knob in clockwise direction to tighten the bolt. Check the knob before each use.



Tighten the 6 knobs

4-6

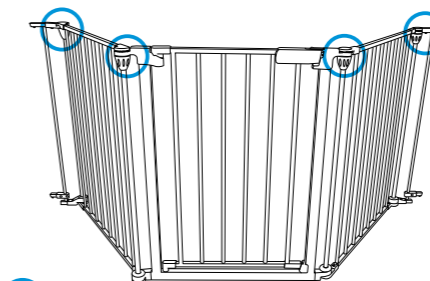
Two steps to open the gate
1, Press the up and down button of the lock at the same time.
2, Pull up the gate until higher than the lock that on the bottom of the gate, then gate open



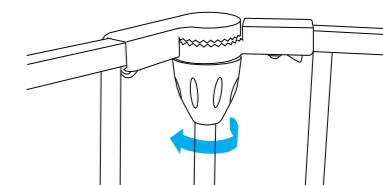
STEP 5 FOLD UP THE GATE

5-1

Rotate the four knob on anti-clockwise direction.

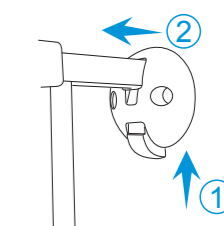
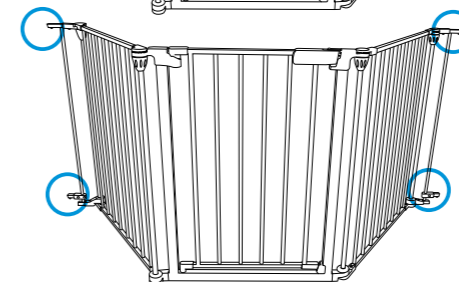


unlock the gate



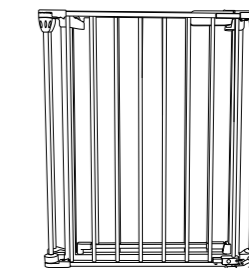
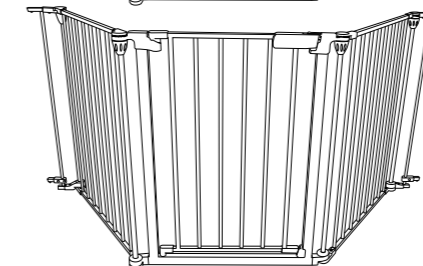
5-2

Press the button on the bottom of the fixing head to remove the gate from the wall.



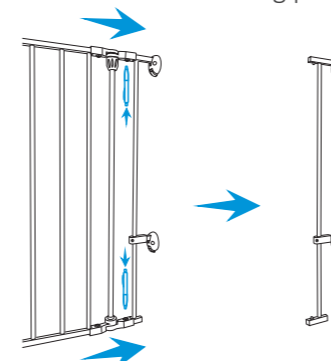
5-3

Fold up the gate like the below picture show



STEP 6 USE AS A PLAYPEN

6-1 Remove the fixing pole



6-1 Remove the fixing pole

