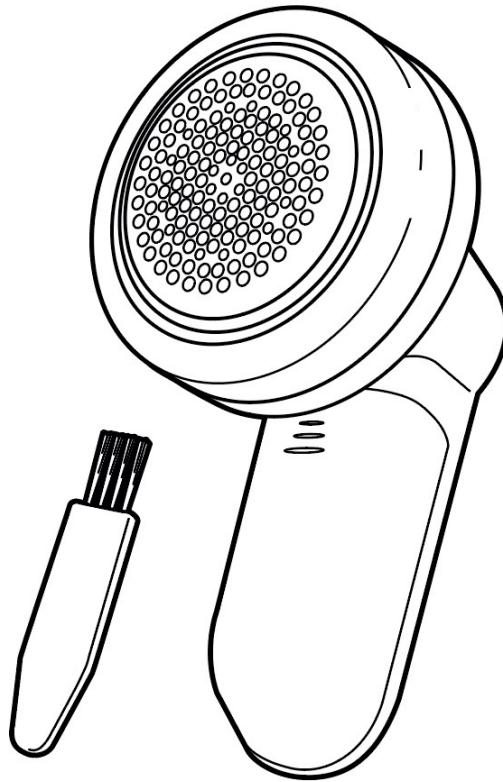


Lint Remover

MODEL: ST-22



INSTRUCTION MANUAL

Read all the instructions before using the device and save this manual.

⚠ SAFETY PRECAUTIONS

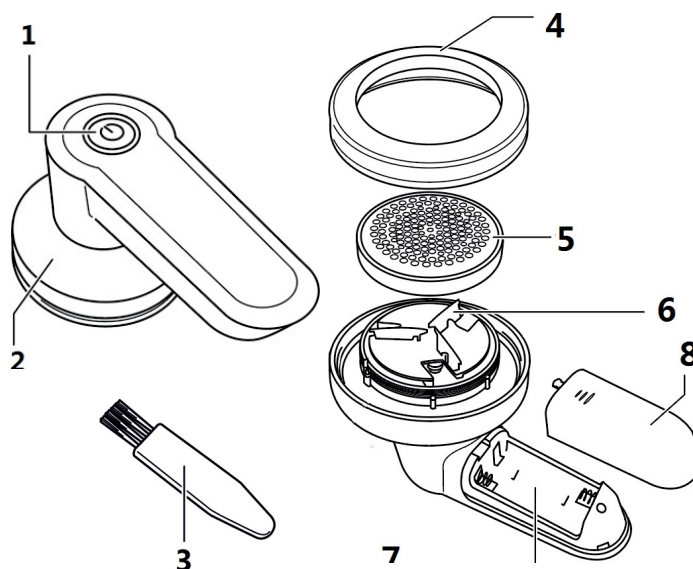
1. Warning: this product is not waterproof, please keep the product dry and do not immerse it in water or other liquids to clean.
2. Do not use this appliance near the bathtub, wash basin, or other vessels with water.
3. This product can only be used to remove clothing lint. It is prohibited to use for other purposes. Never use it for shaving beard, trim hair, etc.
4. To prevent battery leakage, remove the battery for long time storage.
5. Remove the battery and hand it over to the official collection point for safety handling when you discard the product.
6. Do not use any accessories or parts that produced by other manufacturers or any not recommended by AXSOM; the warranty of any quality problem caused by using such accessories will be invalidated.
- ?. Close supervision is needed for children, disabled and incapacitated persons; children should be supervised to avoid treating the product as a toy.

PRECAUTIONS FOR USE

1. To avoid clothing damage while pruning; prevent the clothing folds, ensuring the clothing is smooth before use.
2. To avoid clothing damage; hold the lint remover, do not press hard, just press the outer foil close to the objects.
3. It is prohibited to use the lint remover to handle the clothes you are wearing, otherwise may cause damage on your body and clothes.
4. Please shut the power off immediately if there is any damage or fault, do not assemble and disassemble without authorization.
5. Please keep the power off during cleaning and maintaining this product.

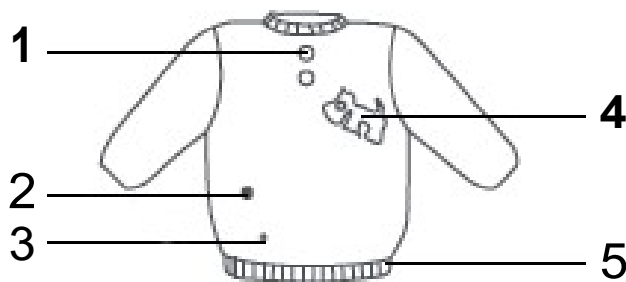
DIAGRAM

1. ON / OFF switch
2. Product frame
3. Brush
4. Store room
5. Mesh cover
6. Blade
7. Battery compartments
8. Battery cover



BEFORE USING

- Please pay special attention to the following parts.

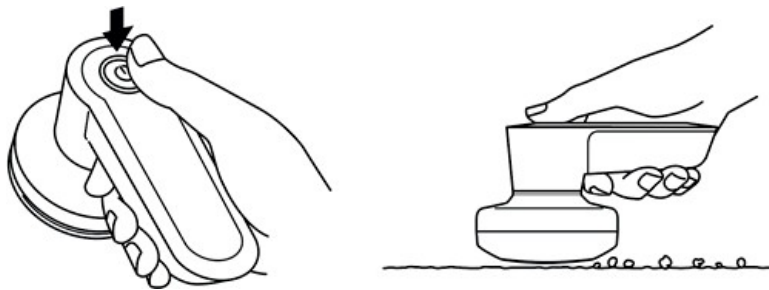


1. Around the buttons, zippers.
2. Remove the foreign object stick on clothes.
3. Thin or easily torn parts.
4. Prominent part on the clothes.
5. Clothes connection place or sewing thread.

- Test at an inconspicuous area of the clothes before using.
- The lint remover has protection function, please make sure to tighten the outer foil, otherwise it cannot be started.

↘ **USE METHOD**

1. Turn on to start the lint remover
 2. Slide the lint remover back and forth on the smooth clothes
 3. **Quick pruning method.**
Slide the lint remover around on the clothing within a narrow range.
 4. **Remove stubborn lint.**
Slide perpendicular and parallel follow the clothing lines.
 5. **Thin clothing.**
Fold double layer and place on ironing board to remove lint.
 6. **Clothing with prominent parts.**
Pass the prominent parts during slide.
 7. **Weave pattern parts.**
Slide along the direction of the pattern.
- **Please do not take the store room off only for cleaning. It may cause bodily injury or mechanical damage.**
 - **Do not use it to remove the lint on silk stockings. It might cause damage by being sucked into the blades.**

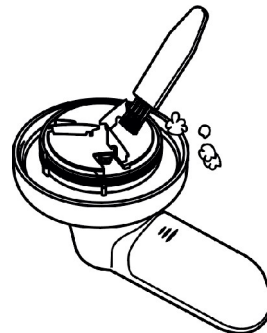
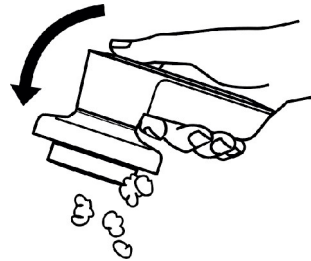
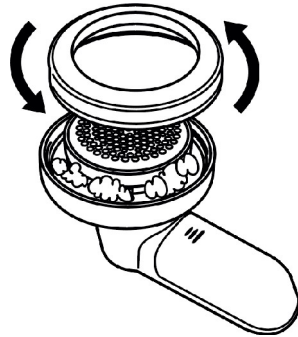


Make sure the lint remover is turned off before placing the battery.

1. Two AA batteries.
2. Open the battery cover, install the two AA batteries correctly based the anode and cathode tips, and then replace the battery cover.
3. For ensure the using results, please replace the battery in time if you find the lint remover under powered.
4. Please use the qualified battery produced from regular manufacturers, to avoid unnecessary damage to the machine.
5. Please hand the used battery over to the recycling center designated by the government to avoid pollute the environment.

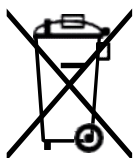
CLEANING METHODS

1. Shut the power off.
 2. Unscrewing the store room counter clockwise and use the cleaning brush to clean lint in the store room
 3. Unscrewing the outer foil counter clockwise
 4. Take the blades and rotation shaft off
 5. Use the cleaning brush to clean outer foil
 6. Use the cleaning brush to clean blades and rotation shaft
 7. Use the cleaning brush to clean lint inside the product frame
 8. Replace the blade, rotation shaft, outer foil, and store room back in reverse order
- Be careful not to scratch the hand during removing the blade.
 - Please do not press hard or strike the outer foil.
 - Do not use cleaning fluids, alcohol and other products to clean this product; otherwise, it will cause product damage.
 - Please use the clean dry cloth or slightly damp cloth to wipe the product frame.
 - Please clean the store room up before it gets 80% full.
 - The lint hidden on the inside of outer foil and center of blade will affect the sharpness and the rotation, please use the cleaning brush to clean.
 - Please store the product in a safe, dry and clean place.





MEANING OF THE DUSTBIN SYMBOL



Protect our environment: **do not dispose of electrical equipment** in your domestic waste.

Please return any electrical equipment that you will no longer use to the collection points provided for their disposal.

These simple steps can help to avoid the potential effects that incorrect waste disposal can cause on the environment and human health.

This will contribute to recycling and other forms of re-use of electrical and electronic equipment.

Information concerning where the equipment can be disposed of can be obtained from your local authorities.



2002/95/EC