



Undertone® Preserve

Under-mount Kitchen Sink
K-5290-HCF

Features

- 36-inch minimum base cabinet width.
- Single bowl.
- 9-5/8-inch depth.
- No faucet holes.
- The innovative Preserve™ sink resists scratching and withstands the everyday wear and tear your sink endures, keeping it looking newer longer.
- SilentShield® sound-absorption technology offers quieter performance.
- Includes a bottom sink rack.
- Includes installation hardware.

Material

- 18-gauge stainless steel.

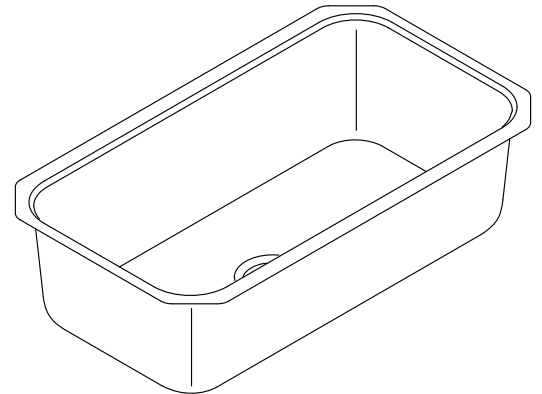
Installation

- Under-mount

Components

Product includes:

K-5474 Stainless Steel Sink Rack



Codes/Standards

ASME A112.19.3/CSA B45.4

Lifetime Limited Warranty for KOHLER® Stainless Steel Sinks

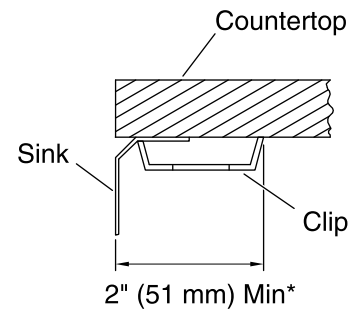
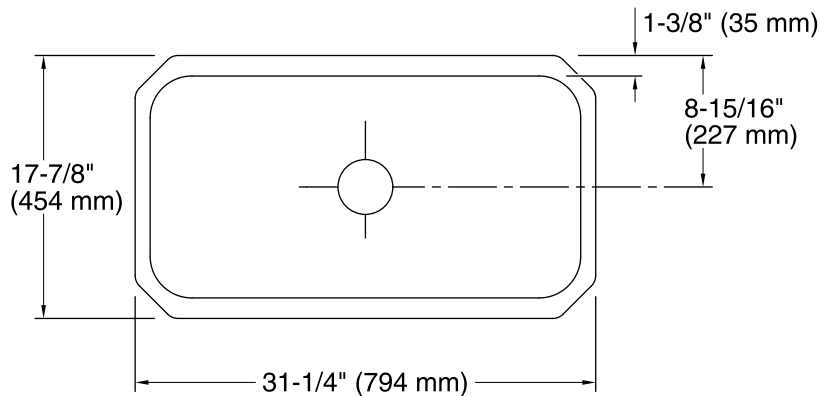
See website for detailed warranty information.



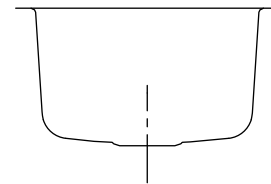
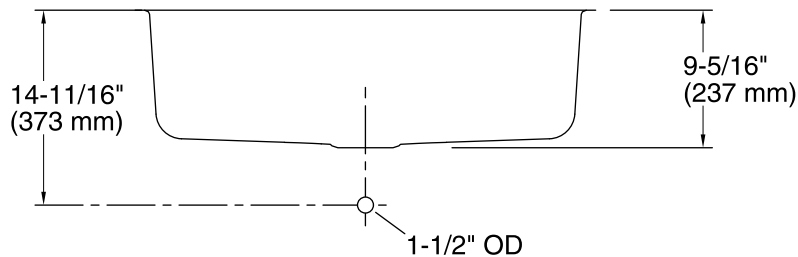
Undertone® Preserve

Under-mount Kitchen Sink

K-5290-HCF



* Allow clearance around sink rim for clip attachment.



Technical Information

All product dimensions are nominal.

Bowl configuration: Single

Installation: Under-mount

Bowl area (Only) Length: 29-3/16" (742 mm)

Width: 15-1/16" (383 mm)

Bowl depth: 9" (229 mm)

Water depth: 9" (229 mm)

Drain hole: 3-5/8" (92 mm)

Template: Under-mount, 1219562-7, required, included

Notes

Install this product according to the installation guide.