

Instruction Manual

Lion Wall Fountain



**Have Questions or Issues? Need help with assembly?
Contact us and we will resolve immediately.**



Having Trouble?

Chat with us on your phone

Purchased your product online?

We would really appreciate it if you can share your experience with others by reviewing our product on the website from which you purchased.



Purchased your product online?

We would really appreciate it if you can share your experience with others by reviewing our product on the website from which you purchased.



Contents

Contents	2
What is included	3
Assembly instructions	4
Warranty	5

What is included



A.Fountain Top



B. Screw



C.Solar P anel



D.Solar Pump

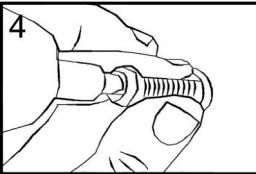
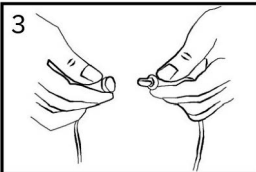
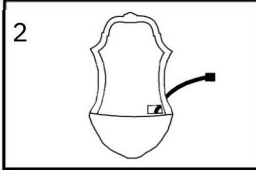
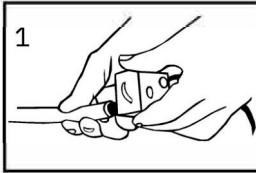


E.Solar Mount



F. Mesh Splash Guard

Assembly instructions



1. Attach the hose to the pump. **DO NOT** pull on the hose in a downwards motion.
2. Feed the pump's cord through the outlet hole in the back of the fountain.
3. Connect the pump's cord to the adapter,
4. Hang on the wall using the attached screw set, fill the basin with water, and plug it in.

Warranty

Limited 1-Year Manufacturer Warranty on xbrand.us

Manufacturer warranty covers:

- Parts that are deemed defective within 30 days will be shipped free of charge, within the 48 contiguous states.
- Any warranty claim after 30 days, will require shipping to be paid by the customer.

Any visible damage due to the neglect, misuse, or abuse will void the limited warranty of the product.