

EN ⚠ Before beginning installation and assembly, please read the entire manual. If you have any questions about any instructions or warnings, please contact your local dealer for assistance.

⚠ Caution: Using this product with weights exceeding the rated capacity may result in instability and lead to injury.

Strictly follow the assembly instructions; improper installation may result in damage or serious personal injury.

Safety equipment and appropriate tools must be used. This product should only be installed by professionals.

Ensure that the supporting surface can safely support the combined weight of the equipment and all attached hardware and related components.

Use the provided mounting screws. These small items pose a choking hazard if swallowed.

Keep them away from children.

This product is for indoor use only. Using it outdoors may result in product failure and personal injury.

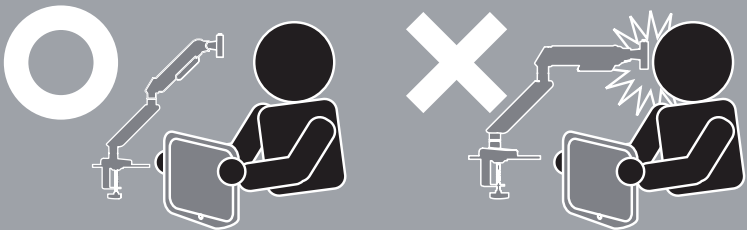
Important: Before installation, ensure you have received all parts as per the parts list. If any parts are missing or defective, please contact the dealer.

Maintenance: Regularly (at least every three months) check the product to ensure it is secure and reliable.

Warning/Advertencia/警告/警告:

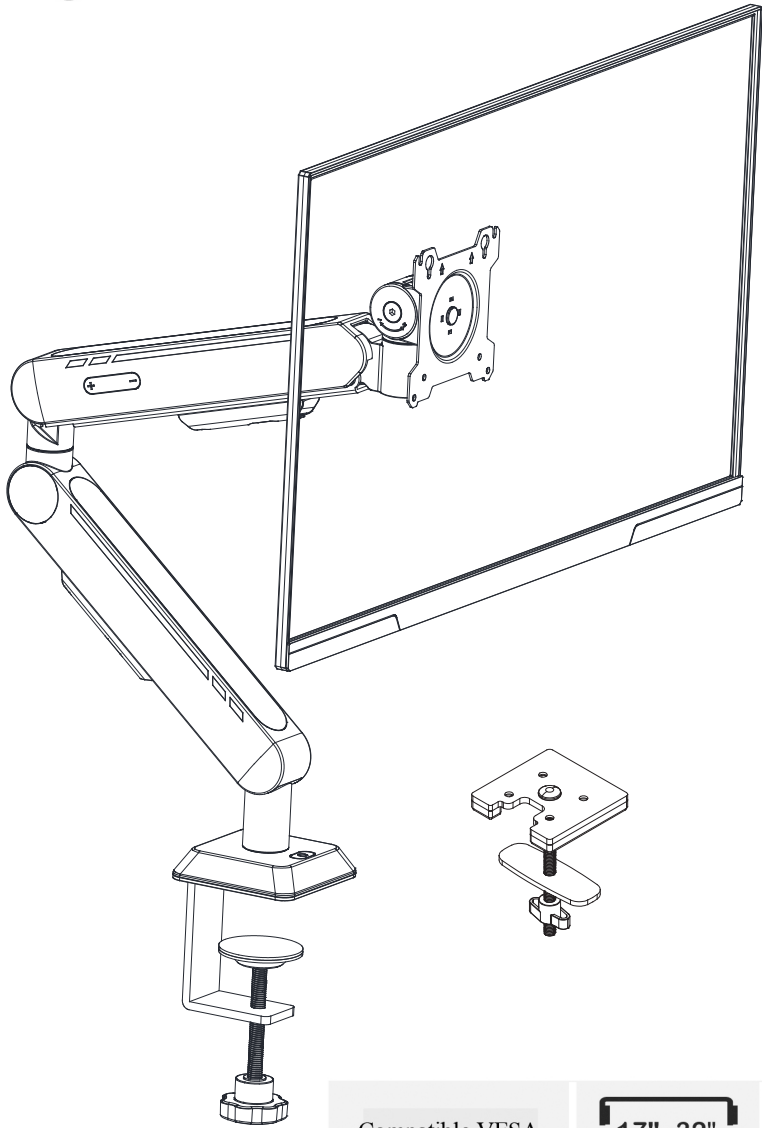
Please lift Arm into full up position when removing Monitor. Weight balanced Arms will spring upward and may cause personal injury, when weight of Monitor is removed.

Levante el brazo completamente cuando retire el monitor. Los brazos equilibrados saltan hacia arriba y pueden causar lesiones personales cuando se retira el peso del monitor.



MS001D

User Manual
Single Arm Monitor Mount



Compatible VESA
75x75 100x100

17"~32"
Flat/Curved

2~9Kg
(4.4~19.8lbs)
Rated

6

Desk Mounting

Note: When using the clamp mounting option, ensure the monitor remains on the desktop.

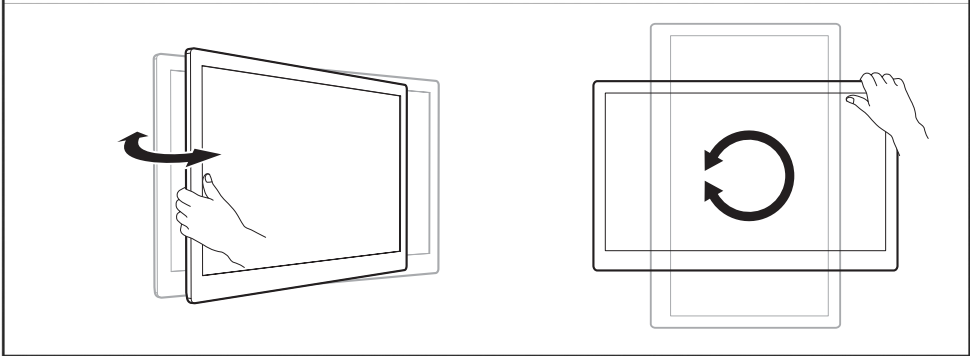
Warning Do not rotate the monitor off the edge of the desk, as this may destabilize the mount and cause damage!

Properly secure the clamp components!

7

Adjustment: Tighten or loosen the screws to ensure the monitor stays upright without drooping.
Note: Do not overtighten the screws, as excessive friction can negatively impact the user experience.

Warning Do not completely loosen the screws.



8

LED Strip Power Supply
Power Interface: Located at the back of the mount, using a Type-C connector
Power Specifications:
DC 5V 2A
(Voltage: MAX: 5.15V MIN: 4.75V Current: ≥2A)

Warning Excessive voltage may cause flickering issues, while insufficient current may result in flickering or automatic shutdown!

Switch Functions
Power On: Press the button briefly
Power Off: Press and hold the button
Lighting Mode Switch
Press the button once to switch to the next lighting mode (33 modes available)
Memory Function
The mount has a memory function for the lighting effects. Except for the first power-on, it will automatically restore the lighting effect from the last shutdown upon each power-on.
Note: If the flowing light effect appears paused, it might be in a stopped state. In this case, touch the button on the mount to turn it off. Upon the next power-on, it will remain paused, and you need to press "On" on the remote control to resume normal operation.

9

21 Lighting Modes Switching
Mode+: Next mode (M+)
Mode-: Previous mode (M-)

Auto-Play of 21 Modes

Power On/Play Pause
When the device is on, pressing the "On" button will pause the lighting. If the mount's touch button is used to power off in this state, it will remain paused upon the next power-on. Use the remote control's "On" button to resume normal operation.

Power Off

Brightness Adjustment
Increase Brightness: (Brightness+)
Decrease Brightness: (Brightness-)

Static Single Color Selection Quick Buttons: Press the corresponding button to display one of 12 available colors.

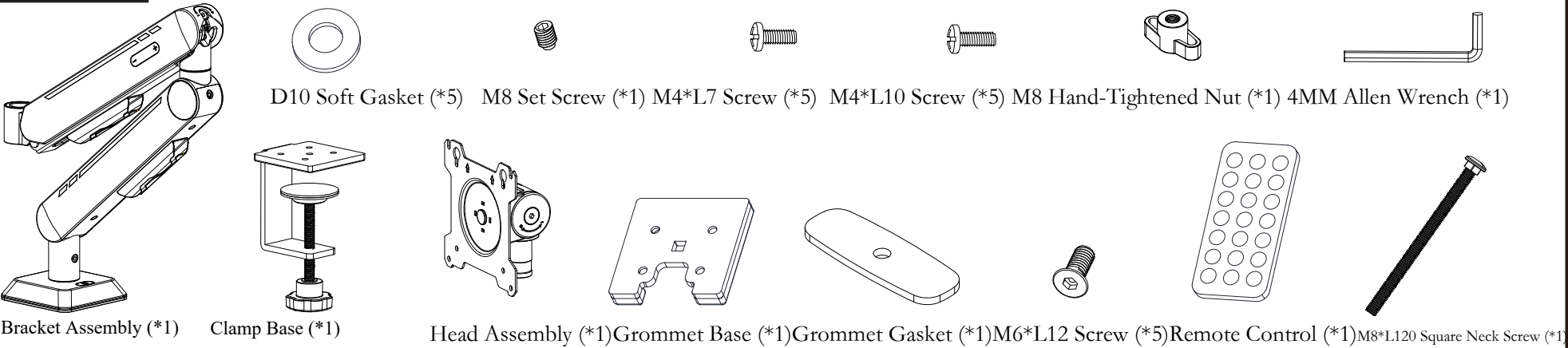
Pairing the Remote: Press and hold for 5 seconds to pair the remote control with the mount for exclusive control.

Unpairing the Remote: Press and hold for 5 seconds to unpair, allowing all remotes to operate the mount.

Before using the remote control, remove the battery isolation tab at the bottom.

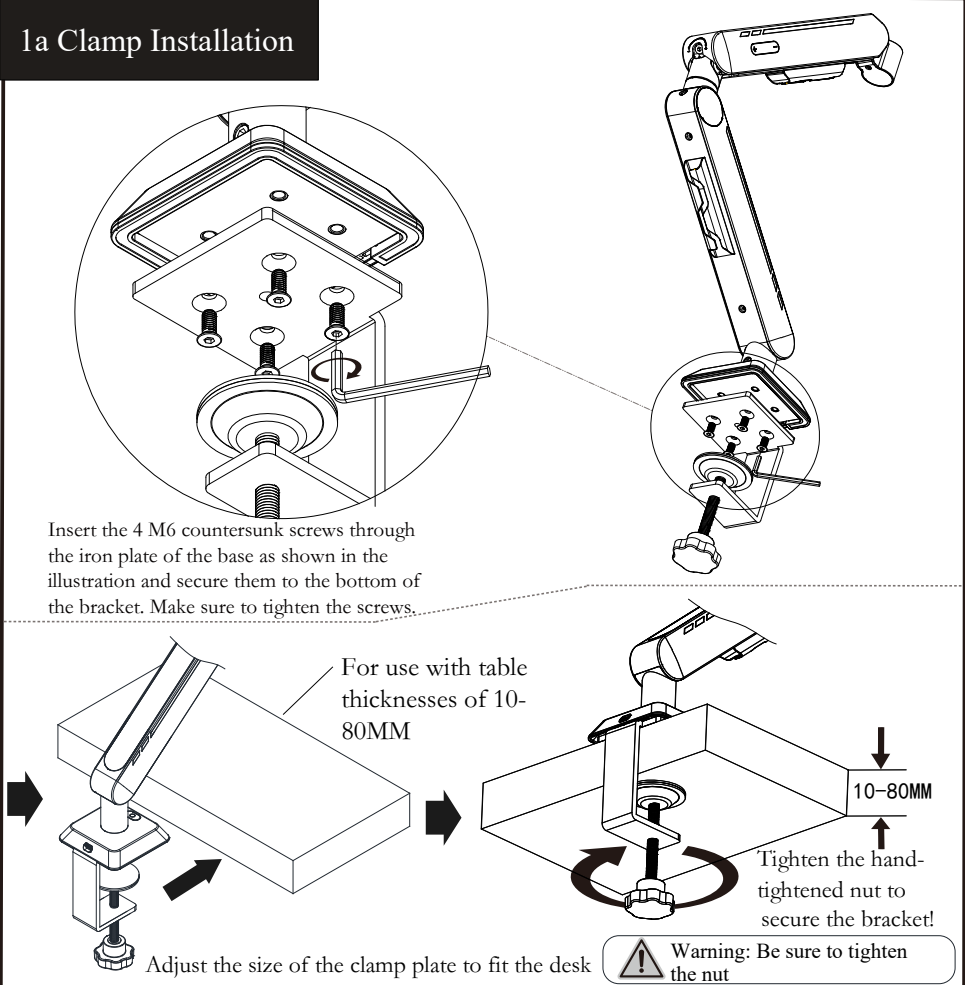
CR2025 3V
Battery Type
CR2025 coin battery

Parts List

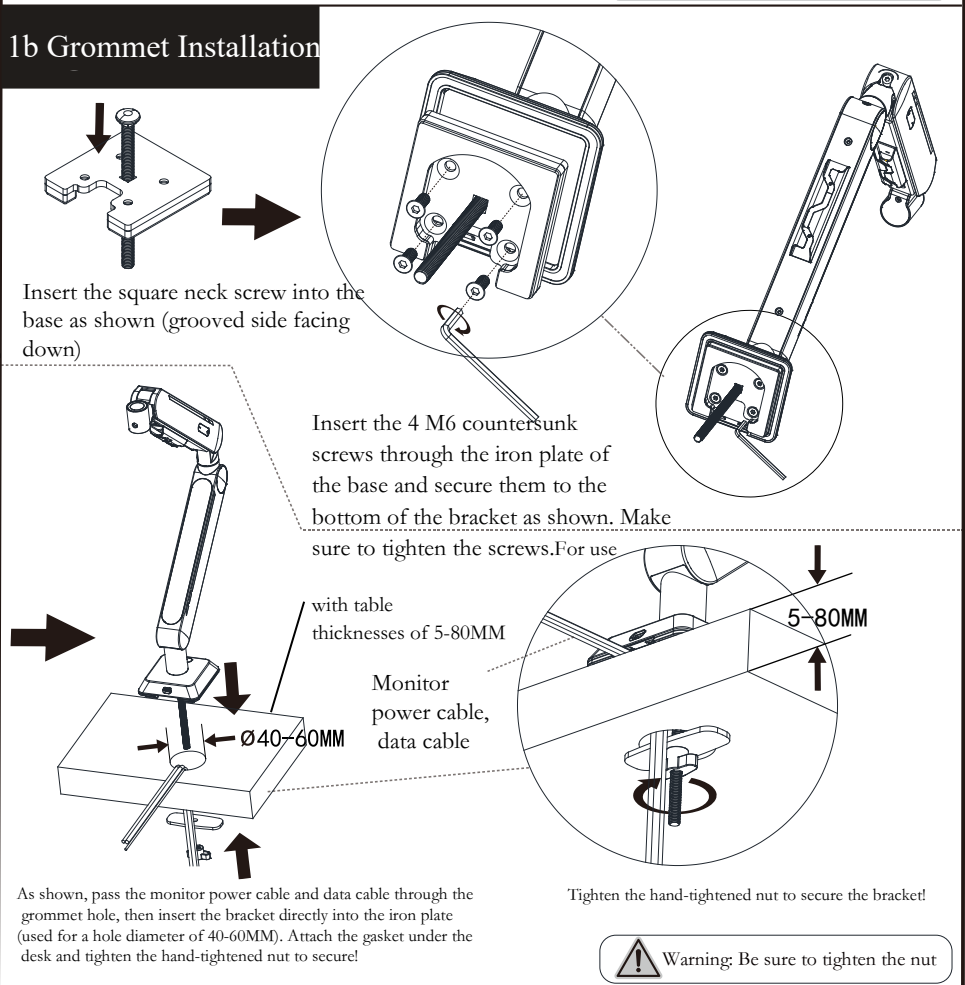


*Before installation, please check if all parts are intact. If any parts are missing or damaged, please contact us.

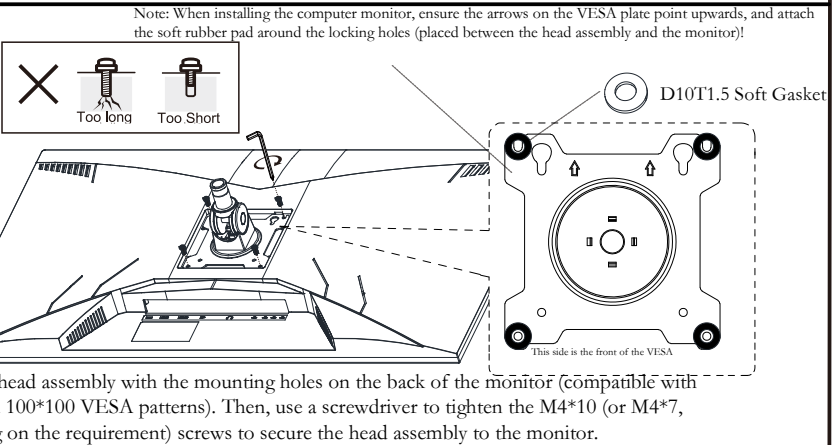
1a Clamp Installation



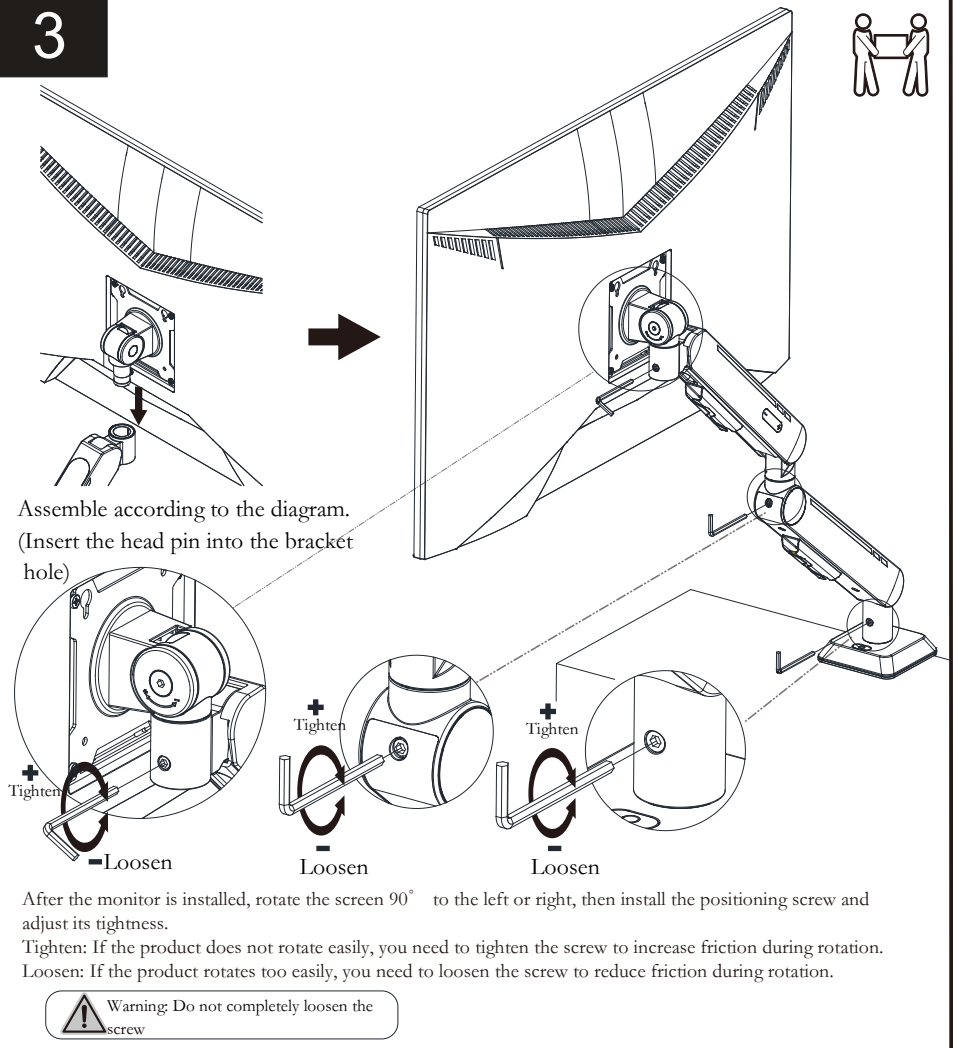
1b Grommet Installation



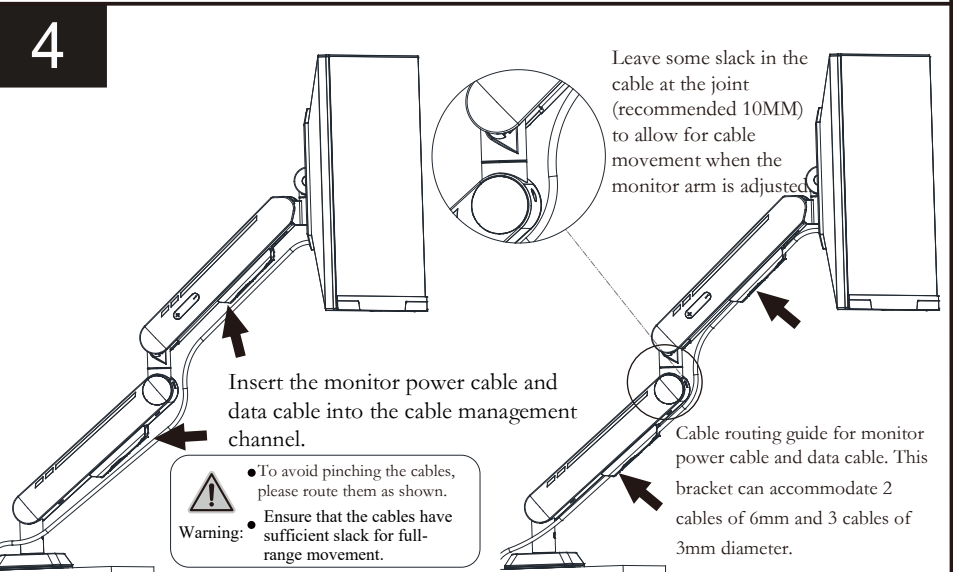
2



3



4



5

