



EMILE 3-HOLE WALL MOUNT TUB FILLER TRIM

FEATURES

- Solid brass construction
- Two lever handles
- High flow rate

COLORS/FINISHES

- #CP Polished Chrome
- #BN Brushed Nickel

INSTALLATION NOTES

This product is designed for a three hole wall installation by a licensed plumbing professional. Please refer to the installation manual for further instructions.



REQUIRED PRODUCTS

OAN-20100 3-HOLE WALL MOUNTED ROUGH-IN VALVE

WARRANTY

- Five-year Limited Warranty for residential use
- One-year Limited Warranty for commercial use

SHIPPING INFORMATION

Package Dimensions
10 7/16" x 6 11/16" x 2 15/16"
Package Weight
3.5 lbs

MATERIAL

- Brass
- Zinc

FLOW RATE

10.3 gpm (38 L/min) @ 60 psi

PLEASE NOTE:

Final achievable flow rate is dependent on the outlets fitted, see relevant outlets (spouts, rose, sprays) for assembled product flow rate.

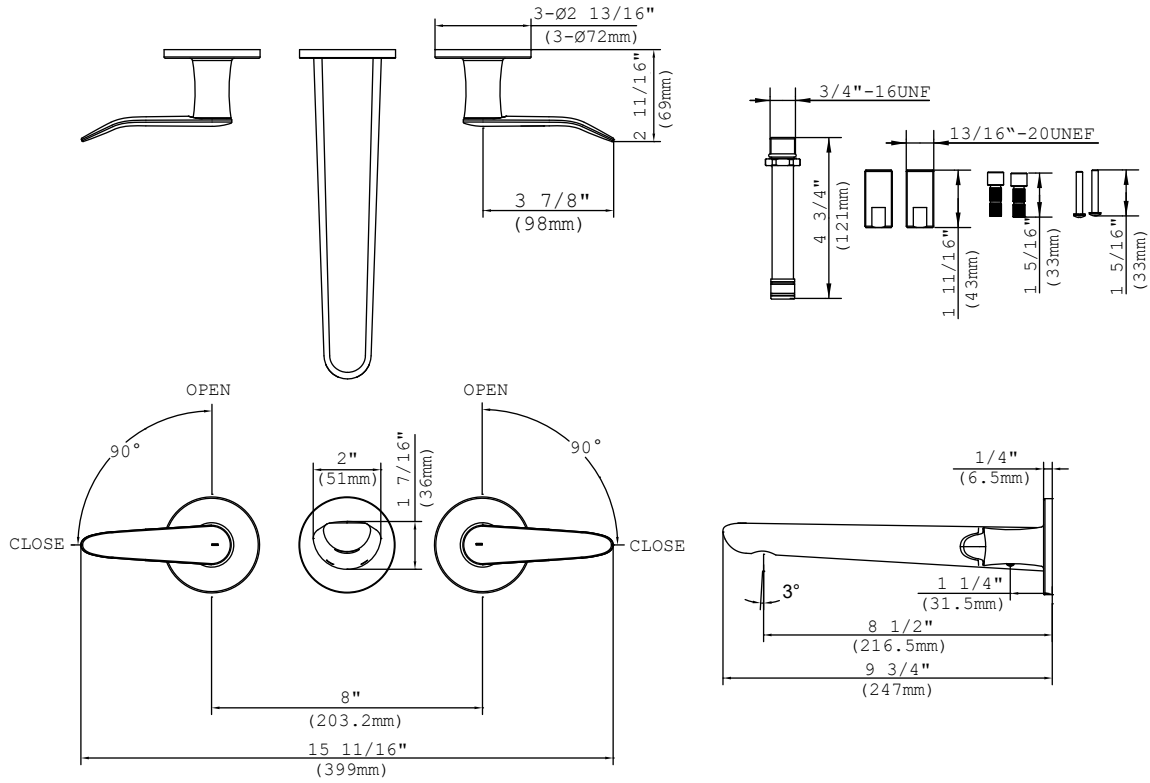
CODES/STANDARDS

- Certifications: IAPMO(cUPC)
- ADA compliant

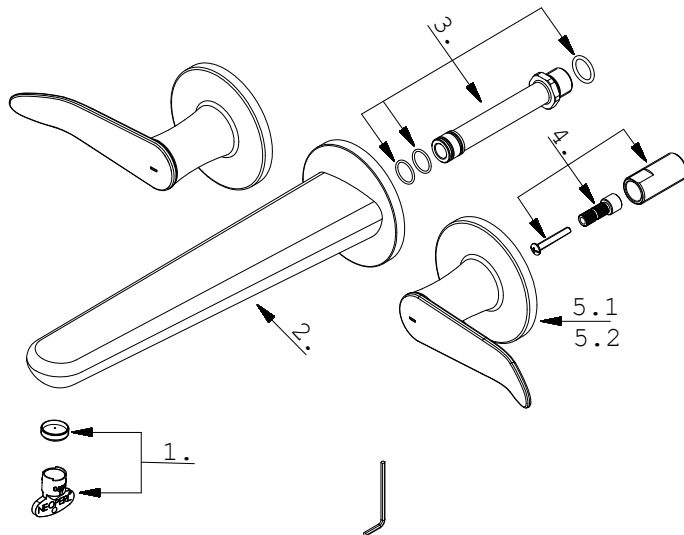




DIMENSIONS



SERVICE PARTS



- 1** Aerator Assembly (A663B55)
- 2** Spout Assembly (A666A01)
- 3** Spout Adaptor Assembly (A663B56)
- 4** Handle Adaptor Assembly (A663B57)
- 5.1** Handle Assembly - Cold (A662A29C)
- 5.2** Handle Assembly - Hot (A662A29H)