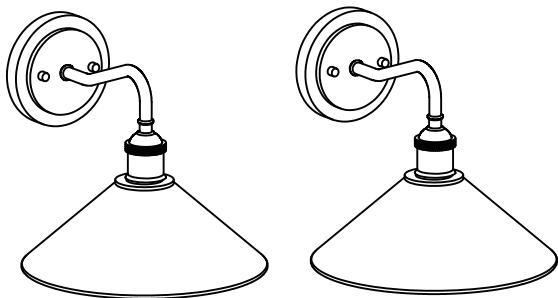


edishinē

Outdoor Wall Light

[Instruction Manual]



Please pay attention to the warning signs
Read the instructions with caution before operating
and keep it properly

WARNING:

Risk of fire. Min 75°C supply conductors. Consult a qualified electrician to ensure correct installation. Before installation, please turn off the main power of the circuit breaker to prevent possible electric shock.

Installation Instructions

NOTE: PLEASE INSTALL THIS WALL LANTERN 1.2 METERS 3.94 FEET ABOVE THE GROUND

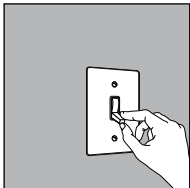


FIG.1 WALL SWITCH

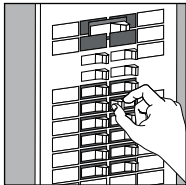


FIG.2 BREAKER PANEL

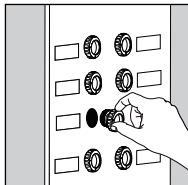


FIG.3 FUSE BOX

STEP 01: POWER OFF

FIG.1. Turn the wall switch to the "OFF" position.

Depending on which type of fuse box in your home:

FIG.2. Either turn the main (Master) switch to the "OFF" position to cut off the power supply of the entire home, or turn off the individual switch that supplies power to the fixture installation location.

OR

FIG.3. Either turn the main (Master) switch to the "OFF" position to cut off the power supply of the entire home, or unscrew the fuse that supplies or turn off the individual switch that supplies power to the fixture installation location.

STEP 02: CLEAN THE LIGHT

Cleaning the outdoor wall light with a soft and damp cloth.

STEP 03: CONNECT THE WIRE

Connect black live wire, white neutral wire and ground wire with wire connectors, be sure that the wires are connected sturdily.

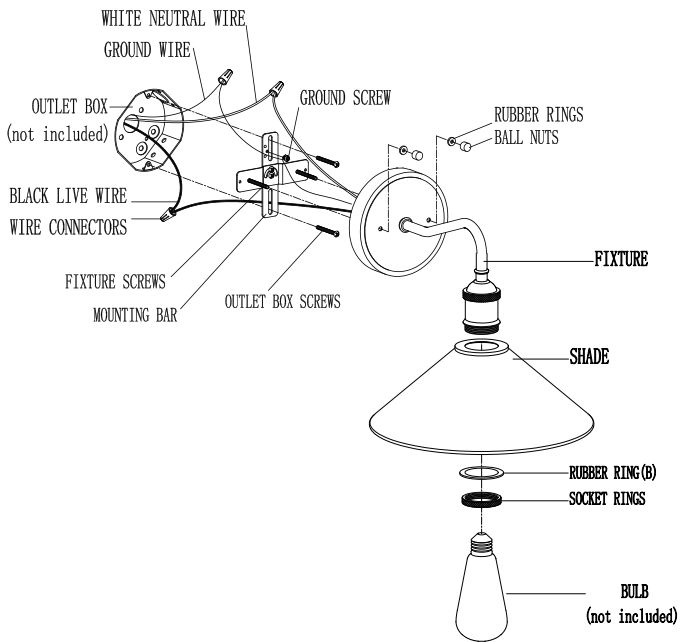
STEP 04: FIX THE LIGHT

- (1) Take out all the parts in the package and place them on a clean surface.
- (2) Unscrew the BALL NUTS and RUBBER RINGS from the FIXTURE SCREWS, and use OUTLET BOX SCREWS to connect MOUNTING BAR to OUTLET BOX.
- (3) Use CONNECTORS to connect the BLACK WIRE of the FIXTURE to the BLACK WIRE of the OUTLET BOX, connect WHITE WIRE of FIXTURE to WHITE WIRE of OUTLET BOX, and connect the GROUND WIRE of the FIXTURE to the GROUND WIRE of the OUTLET BOX. Use GREEN GROUND SCREW to connect GROUND WIRE of FIXTURE to MOUNTING BAR. Carefully put the wire back into the OUTLET BOX.
- (4) Use FIXTURE SCREWS to install FIXTURE on MOUNTING BAR and fix it with BALL NUTS and RUBBER WASHERS.
- (5) Remove the SOCKET RING and RUBBER RINGS(B) from the socket. Attach the SHADE onto FIXTURE using SOCKET RING and RUBBER RINGS(B).
- (6) Install the bulb (Not included).

STEP 05: POWER ON

Turn on the main (Master) switch to get the power back, the light will turn on automatically.

The lamp structure is described as following picture:



Specifications:

- Input Voltage: 120VAC 60HZ
- Max load Power for Bulb : Incandescent Bulb 60W(bulb not included)
- Socket Type: Standard medium E26
- Material: Steel

One Year Limited Warranty

Supported by our professional R&D team and QC team, we provide One Year Warranty for materials and workmanship from the purchase date. Please note that the warranty does not cover damage caused by personal misuse or improper installation.

Please attach your Order ID and Name so that our dedicated customer service team can help you better.