

## HANDMADE WOODCART

Product Description: Handmade Woodcarter



THIS INSTRUCTION BOOKLET CONTAINS IMPORTANT SAFETY INFORMATION. PLEASE READ IT CAREFULLY AND KEEP FOR FUTURE REFERENCE.

Recommended no. of people needed for assembly: 2

### Before Starting:

- Read each section carefully before starting. It is very important that each step is performed in the correct order. If these steps are not followed in sequence, assembly difficulties will occur.
- Make sure all parts are included. Most board parts are labeled and stamped on the raw edge.
- Working space: ensure, preferably on a carpet, near the glass top and well-ventilated.

• Have the following tools close at hand.



• Do not use power tools to assemble your furniture. Power tools may slip and damage the parts.

### HELPFUL HINTS:

- Identify, suit and sort the parts before beginning assembly.
- Compression covers should be tapped in with a rubber mallet.
- Slides have a lip on the right only.
- Back panel provides stability and support.
- Unit may collapse without back panel installed.
- Clean the product with your choice of furniture polish and a soft cloth. DO NOT USE harsh chemicals or abrasive cleaners.
- Move your new furniture carefully. Two people are needed to lift and carry the unit to its new location.
- Heavier pulls, drag or soot your furniture (especially on a carpet).

### PART LIST:

A 1			B 1			C 1		
D 1			E 1			F 1		
G 1			H 1			I 1		
J 1			K 2			L 1		

Page: 1 / 7

Page: 2 / 7

### PART LIST: (Continue)

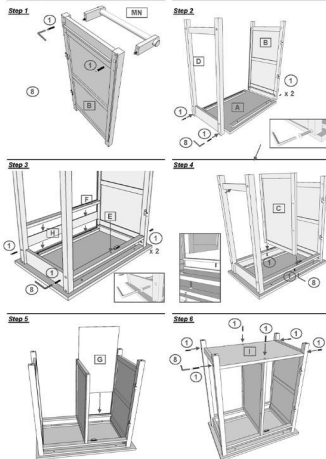
M 1			O 1					
P 2			Q 2			R 1		

### HARDWARE LIST:

1 x 10			2 x 5			3 x 5		
4 x 2			5 x 2			6 x 2		
7 x 4			8 x 1					

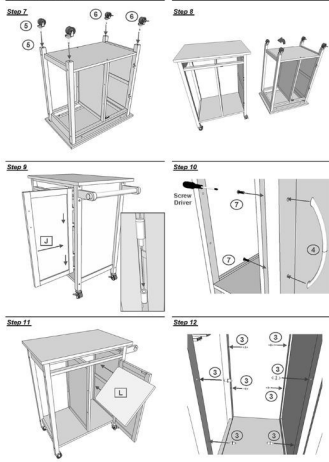
Page: 3 / 7

### Assembly:



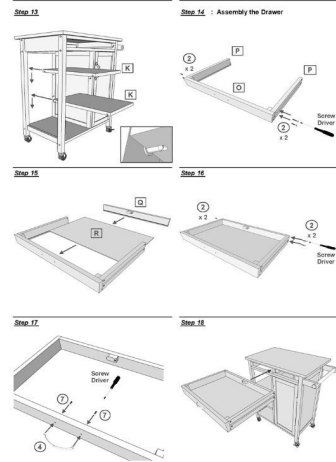
Page: 4 / 7

### Assembly: continue



Page: 5 / 7

### Assembly: continue



Page: 6 / 7

