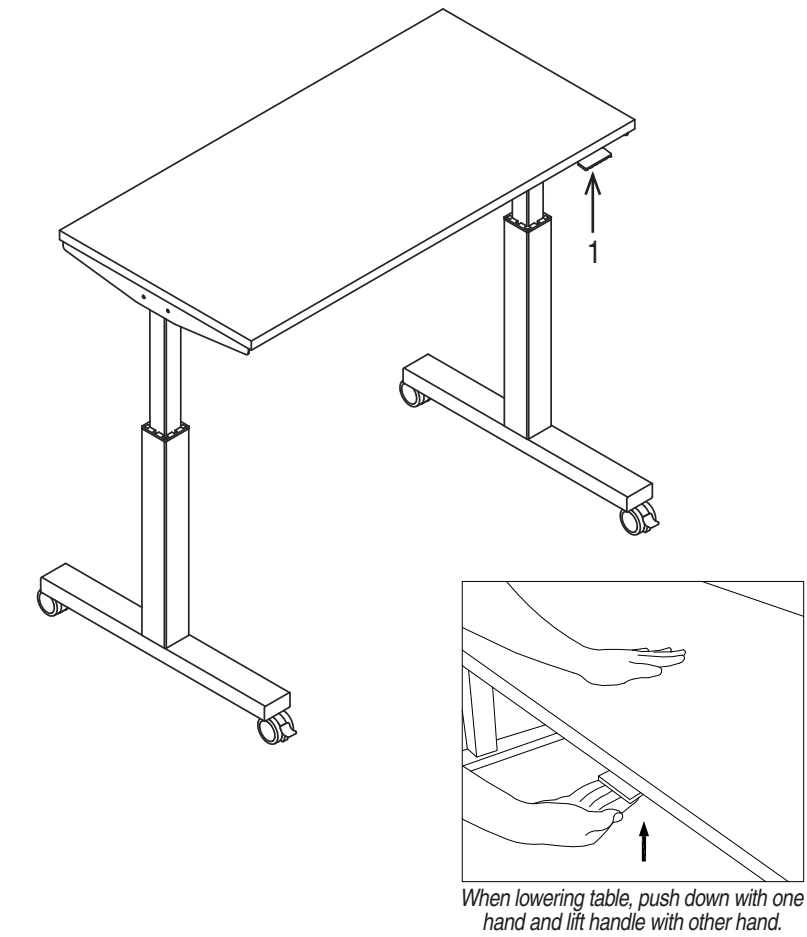


PNEUMATIC HEIGHT ADJUSTABLE TABLE

OPERATING INSTRUCTIONS



4' wide
5' wide
6' wide

FEATURES

PNEUMATIC HEIGHT ADJUSTMENT

- Lock all casters.
- When raising/lowering table, use one hand to support the center of top and the other hand to lift handle.
- To raise table height, lift handle (1), table will move up gradually, release handle (1) when desired height is reached. To lower table, with one hand push the center of table top downward and lift handle (1) with other hand, release handle (1) when desired height is reached.

LOCKING CASTERS

- Casters equipped with locks.

WARNING

- Use this product only one person at a time.
- Use this product for its intended purpose.
- Do not put any item on top when raising/lowering the top.
- When top is in a resting position, the maximum weight of all items on top is 165 lbs.
- Table cannot be raised with more than a 35 lbs load.
- Do not stand on product.
- Do not use this product as a step stool or ladder.
- Do not use product unless all metal fasteners are tight. At least every six months, check all fasteners and joints to ensure they are tight.
- Do not modify product in any way.
- If any parts are missing, broken, damaged or worn, stop use of the product until repairs are made using factory authorized parts.
- Dispose of packing material properly. Do not use any packing materials as head covering. It may cause suffocation
- Failure to follow these warnings could result in serious injury.

WARNING

- 1) Do NOT actuate base until Top has been attached to Base.
- 2) Always fully assemble top/base before raising the Top.

NOTE: Be sure to lift handle completely when raising / lowering table. Failing to do so may cause noise in height adjustment mechanism.

LIMITED WARRANTY

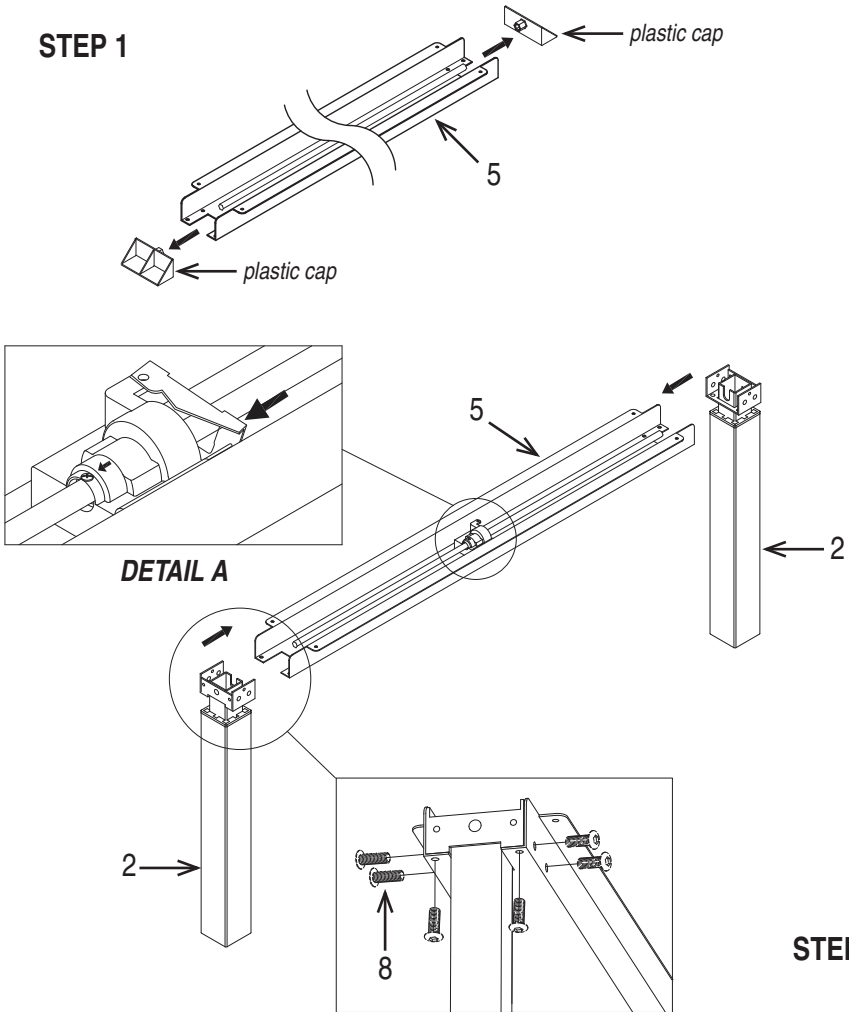
Grain, color and finishes

Variation of grain and color are natural, inherent characteristics of wood, a living material. This variation is part of the beauty of real wood and anticipated in wood veneer furnishings.

PNEUMATIC HEIGHT ADJUSTABLE TABLE

ASSEMBLY INSTRUCTIONS

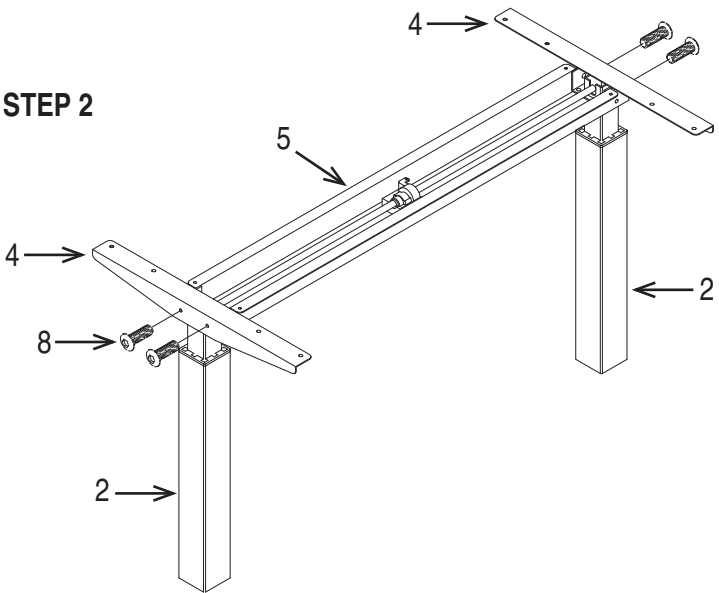
STEP 1



PART	QTY
1. Table Top	1
2. Leg Post	2
3. Foot	2
4. Top Support	2
5. Channel	1
6. Caster	1
7. Short Screw	18
8. Medium Bolt	16
9. Long Bolt	8
10. Height Adjustment Lever	1
11. Allen Wrench (not shown)	1
12. Key Wrench (not shown)	1

Phillips screwdriver also needed for assembly (not provided)

STEP 2



WARNING

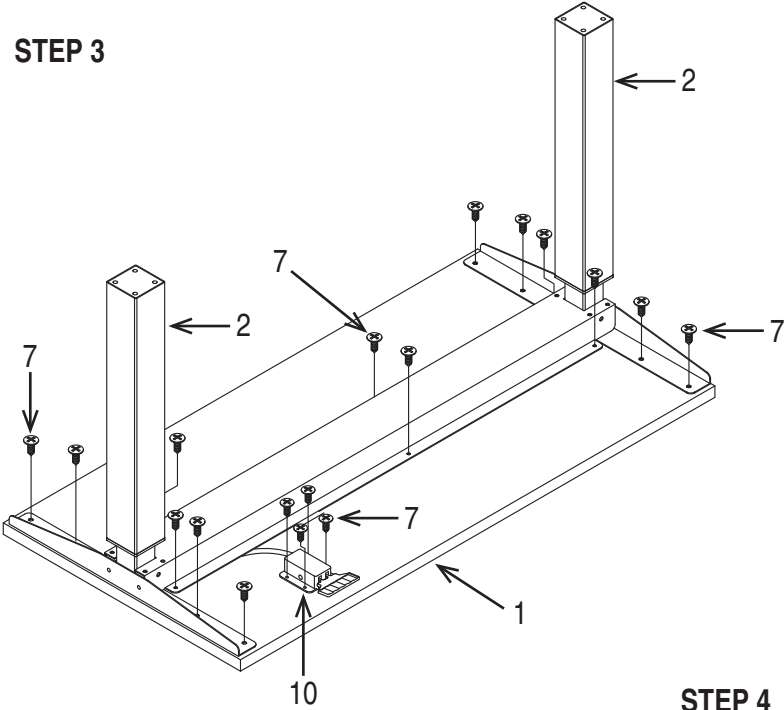
- 1) Do NOT actuate base until Top has been attached to Base.
- 2) Always fully assemble top/base before raising the Top.

Remove all the parts from carton, separate them into part numbers indicated on the list and make sure part quantities are correct.
STEP 1 Remove plastic caps from ends of Channel (5). Attach Channel (5) between Leg Posts (2). To align rod with Leg Posts (2), squeeze lever to turn rod into position. **SEE DETAIL A.** Secure Leg Posts (2) to Channel (5) using six Medium Bolts (8) for each Leg Post (2). **DO NOT FULLY TIGHTEN BOLTS.**
Note: You can slightly angle Leg Posts (2) to assist in aligning screw holes with holes in Channel (5).
STEP 2 Attach Top Supports (4) to Leg Posts (2) using two Medium Bolts (8) for each Leg Post (2). **FULLY ALL BOLTS USING ALLEN WRENCH (11).**

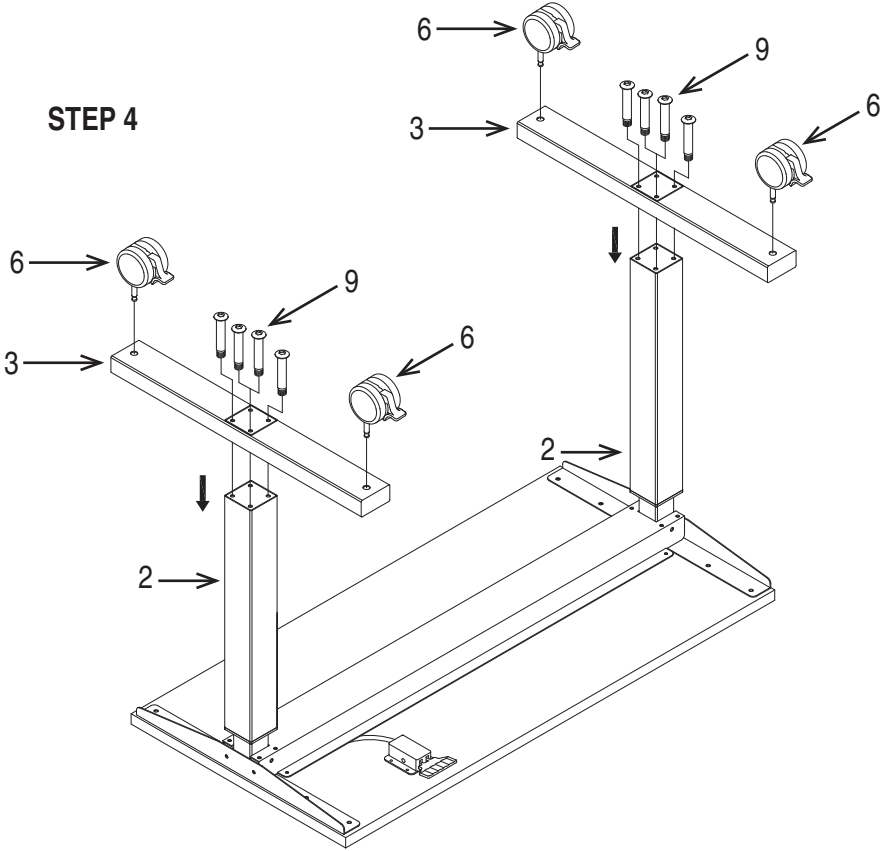
PNEUMATIC HEIGHT ADJUSTABLE TABLE

ASSEMBLY INSTRUCTIONS

STEP 3



STEP 4



STEP 3 Attach Leg Post (2) assembly to Table Top (1) using fourteen Short Screws (7). **FULLY TIGHTEN SHORT SCREWS (7).** Attach Height Adjustment Lever (10) to Table Top (1) using four Medium Screws (7). **FULLY TIGHTEN SHORT SCREWS (7).**
STEP 4 Attach Feet (3) to Leg Posts (2) using four Long Bolts (9) for each Foot (3). **FULLY TIGHTEN LONG BOLTS (9).** Screw in two Casters (6) into each Foot (3). **FULLY TIGHTEN CASTERS (6) USING KEY WRENCH (12).**
ATTENTION: MAKE SURE ALL BOLTS, SCREWS & CASTERS ARE FULLY TIGHTENED BEFORE USING TABLE.