



Outdoor
Living Today

ASSEMBLY MANUAL

6x3 Garden in a Box Greenhouse Kit

Stock Code:

RB63PO

Version #3.2

April 14, 2025

Licensed Under U. S. PATENT No. RE44055

Thank you for purchasing a 6' x 3' Raised Garden Bed Greenhouse Kit. You must have the 6x3 Raised Bed Kit as well as the Raised Bed Trellis/Lid Kit in order to complete this project.

Please take the time to identify all the parts prior to assembly.

Please use Safety Eyewear and Gloves while assembling. Be sure to read and follow all operating instructions for any tools used during assembly.

Remember- NO SAW CUTTING IS REQUIRED!

Safety Points and Other Considerations

Please follow this instruction manual when assembling your Raised Garden Bed Greenhouse Kit and retain the manual for future maintenance purposes.



Estimated Assembly Time for the Greenhouse Kit = 3/4 Hour.

CONTACT

ADDRESS

9393 287th Street,
Maple Ridge, British Columbia,
Canada V2W 1L1

PHONE & FAX

Toll Free: 1-888-658-1658

Fax:

ONLINE

Email: olmsupport@outdoorlivingtoday.com

Web: www.outdoorlivingtoday.com

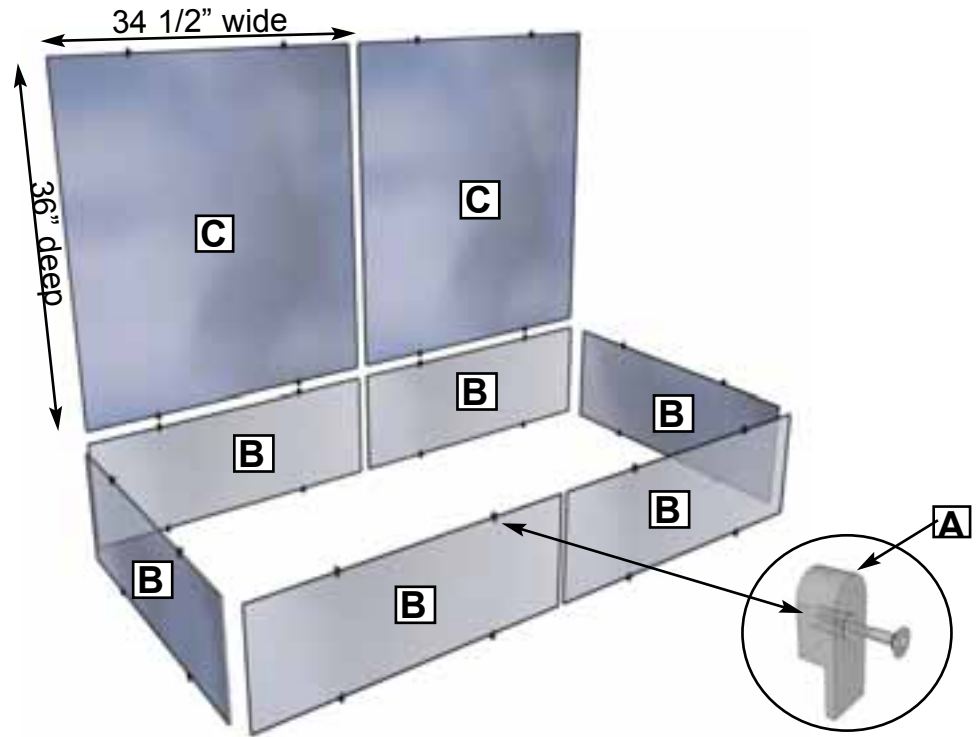
Exploded View and Parts List for 6x3 Raised Bed Greenhouse Kit

Parts List

Part A 34 - Greenhouse Clips with screws. (32 required / 2 extra).

Part B 6 - Side Greenhouse Panels
34 1/2" wide x 11 1/2" high

Part C 2 - Top Greenhouse Panels
34 1/2" wide x 36" deep



Hardware Kit (Provided)



#1 Square Drive Bit x 1 pc

Tools Required (Not Provided)



Screw Gun/Drill



1/16" Drill Bit



Screwdriver
#1 Square Drive



Tape Measure

Greenhouse pieces have sharp edges that can cut. Please use the safety equipment below:

Safety Equipment Required (Not Provided)

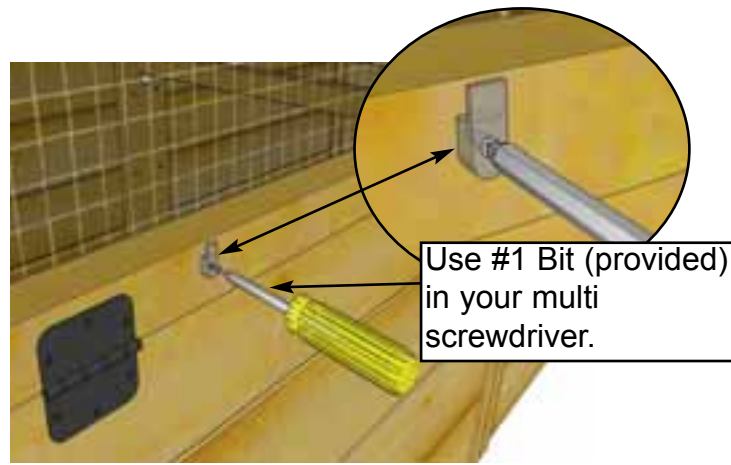
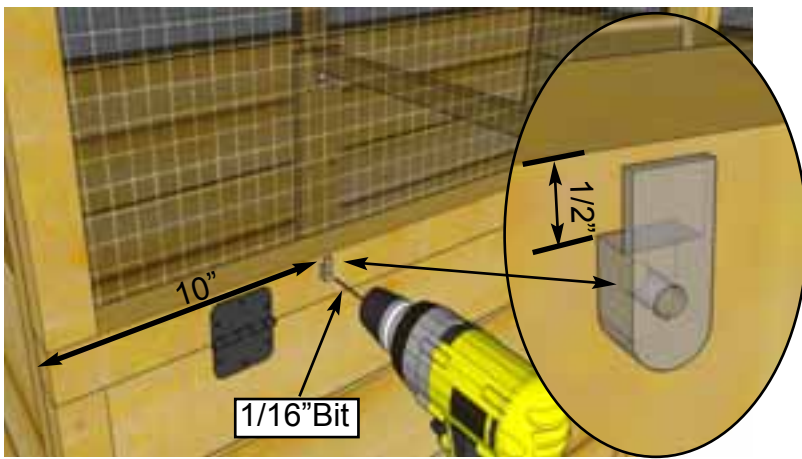


Safety Glasses

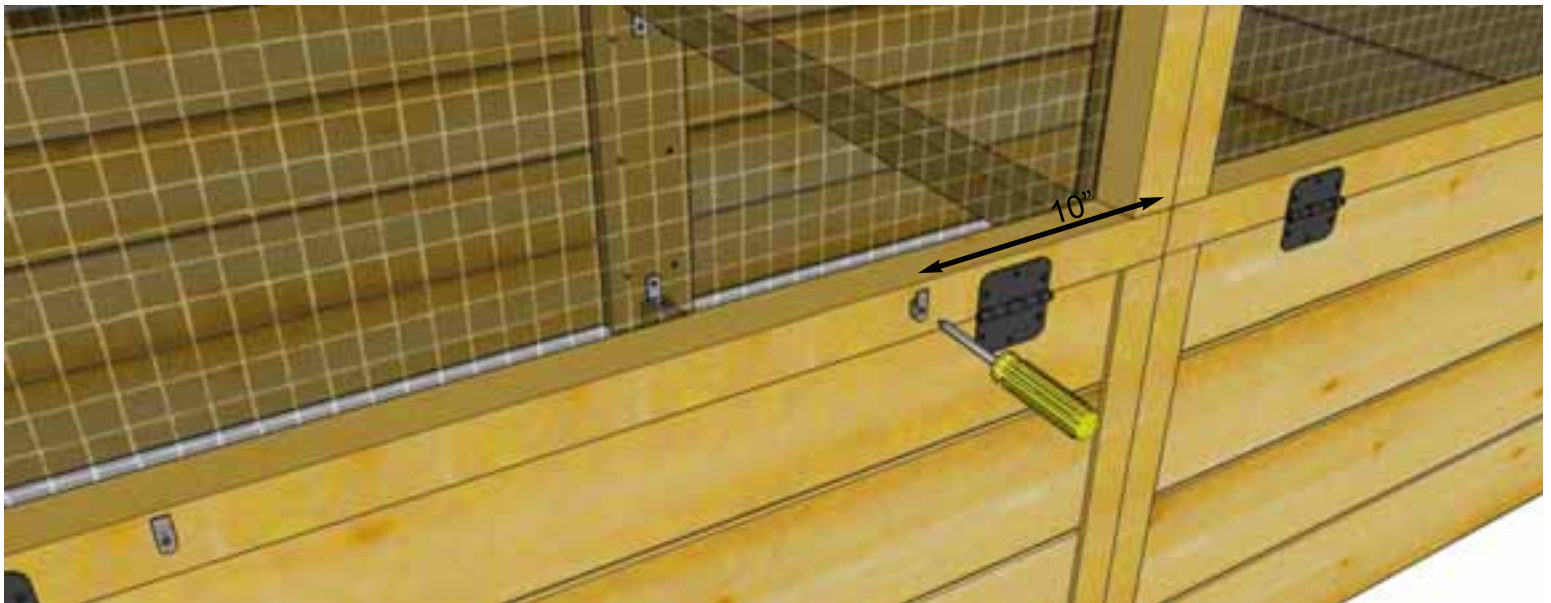


Work Gloves

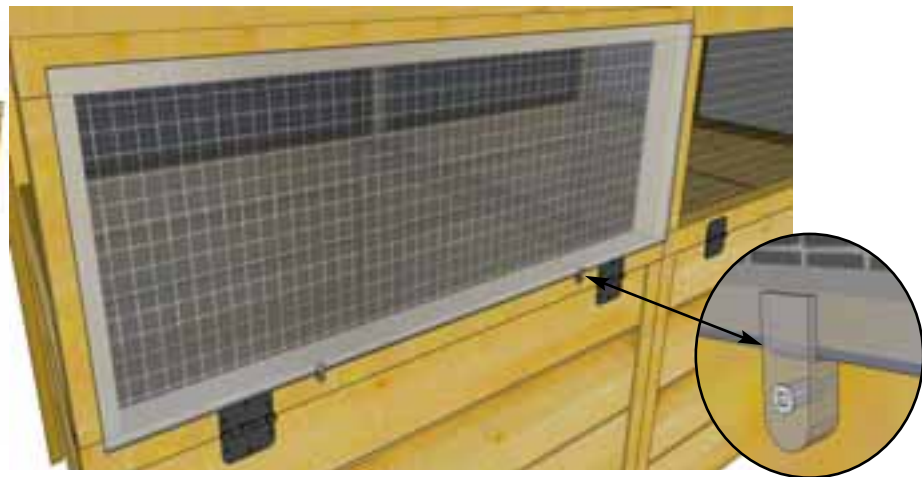
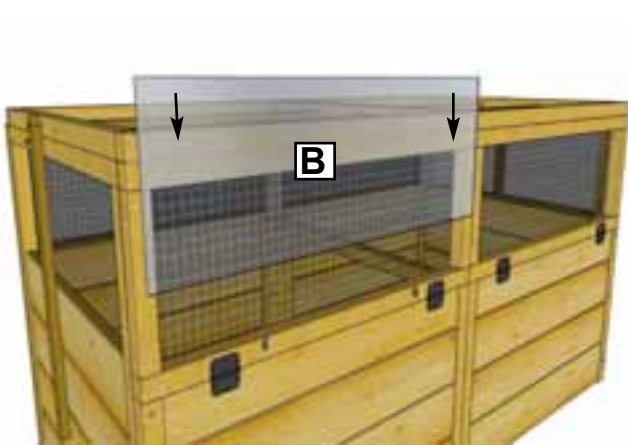
In the event of a missing or broken piece, simply call the Outdoor Living Today Customer Support Line @ 1-888-658-1658 within 30 days of the delivery of your purchase. It is our commitment to you to courier replacement parts, free of charge, within 10 business days of this notification. Replacement parts will not be provided free of charge after the 30 day grace period.



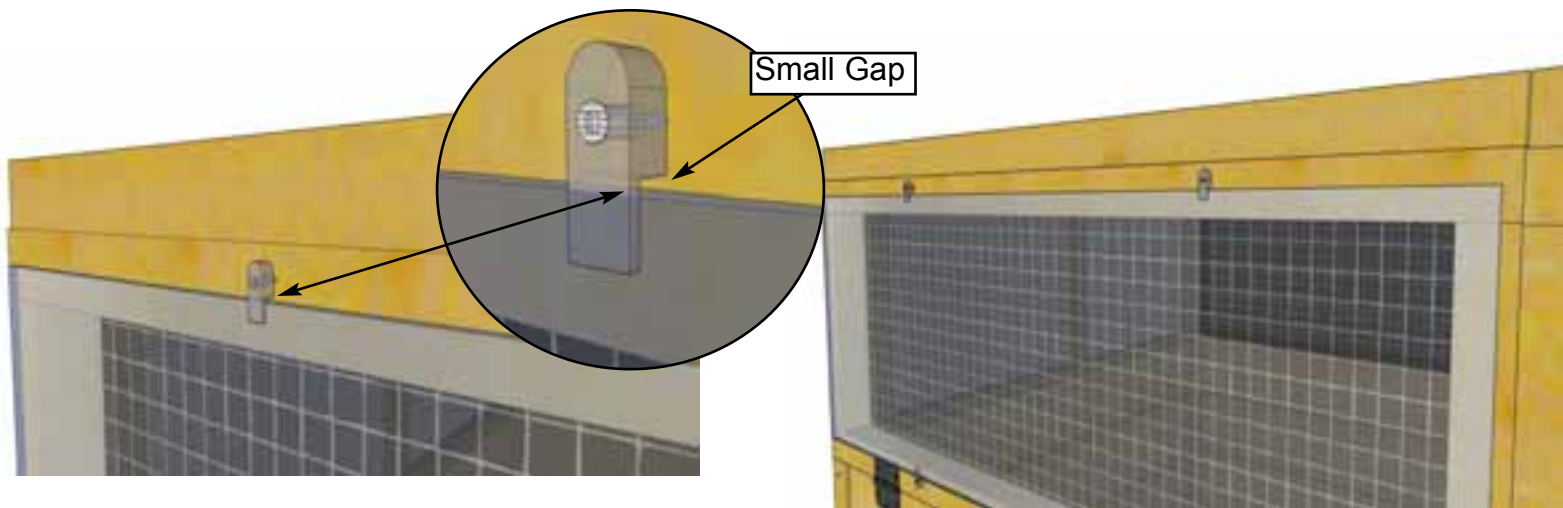
1. Start by installing bottom **Greenhouse Clips (A)** first. Measure 10" from the outside frame horizontally and recessed 1/2" down as illustrated above. Hold into position and make a shallow 1/16" diameter drill hole. Clip includes #1 square head screw. Fasten initially with screw gun and screw bit provided. Finish with Screwdriver. **Important** - Easy to crack clip when tightening with screw gun, finish tightening with screwdriver.



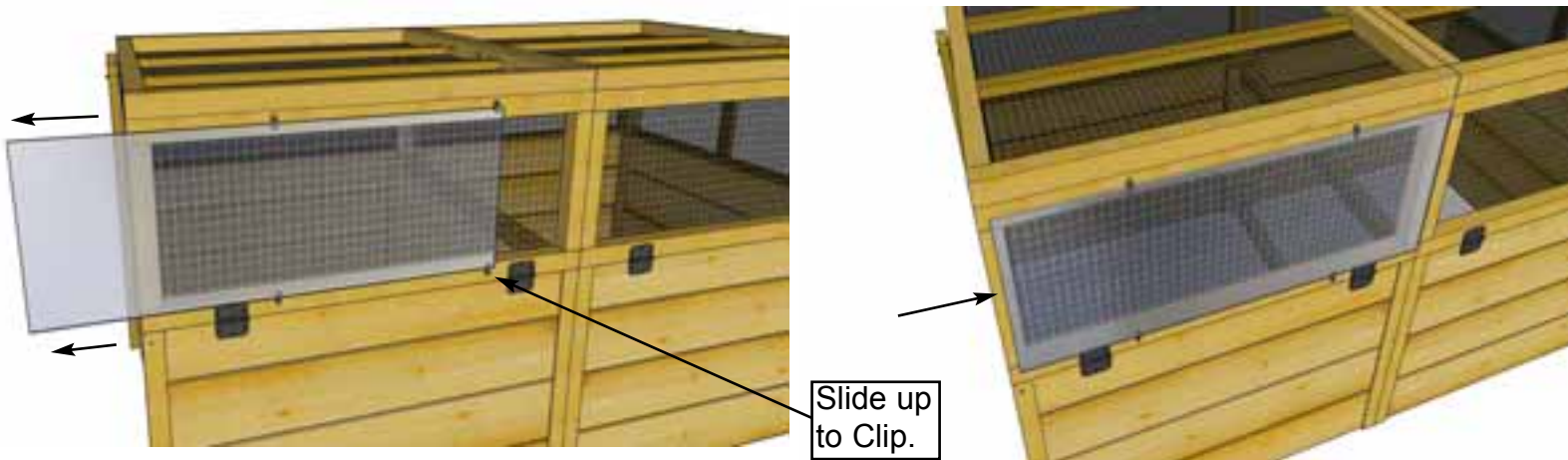
2. Complete second bottom clip as per **Step 1.**



3. Locate **Side Greenhouse Panel (B)** - 34 1/2" x 11 1/2". Be sure to use safety gloves when handling panel as edges are sharp and can cut. Slip bottom of panel into clip as shown above.



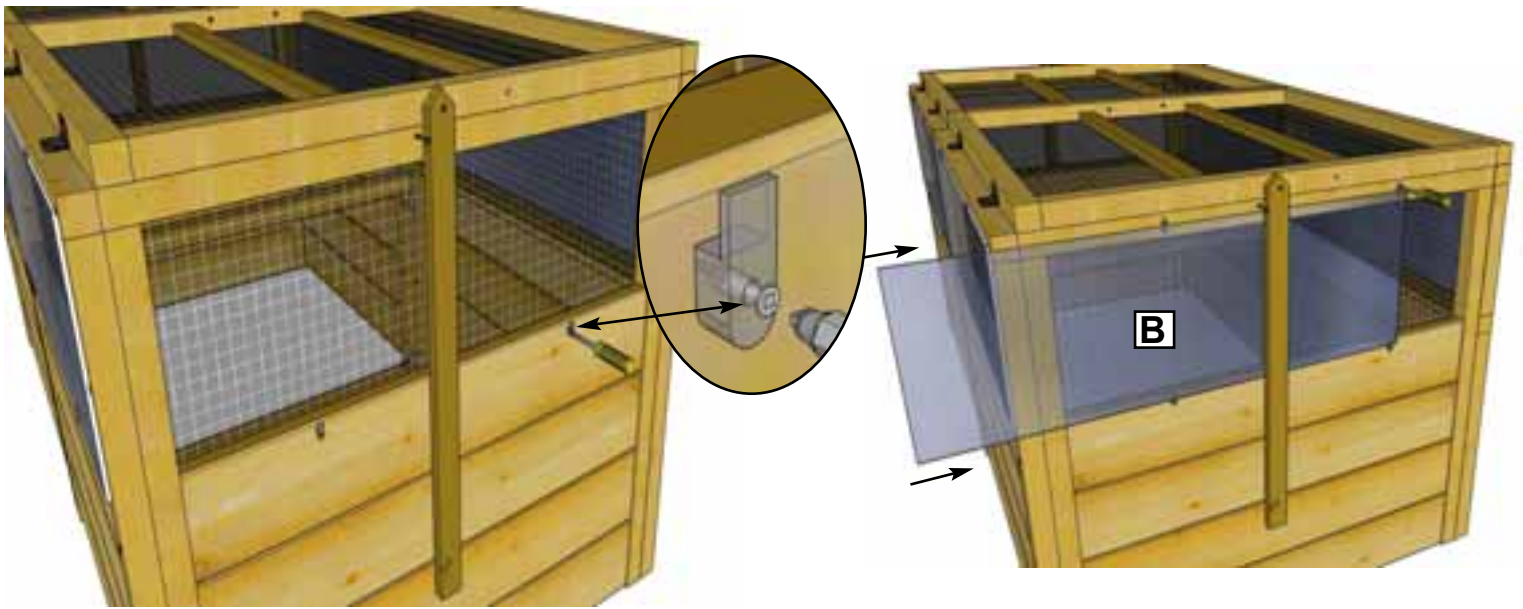
4. While holding greenhouse panel in place, attach 2 top clips as per **Step 1**. Leave a small gap between the panel and the clip. Use 4 clips per panel.



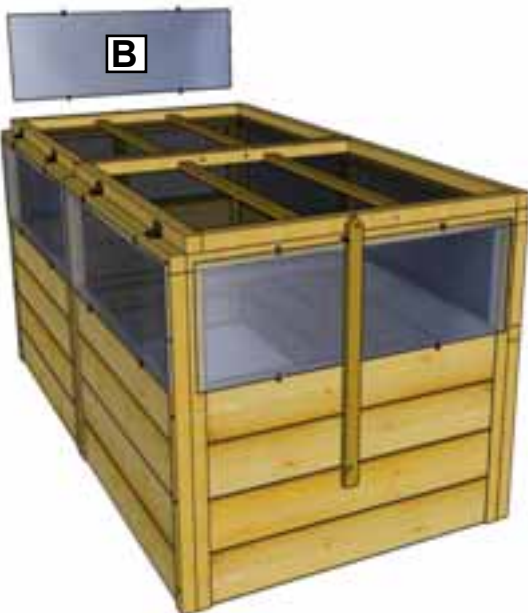
5. The greenhouse panel should be able to slide back and forth allowing air flow into the raised bed as required. Check and adjust clips if necessary.



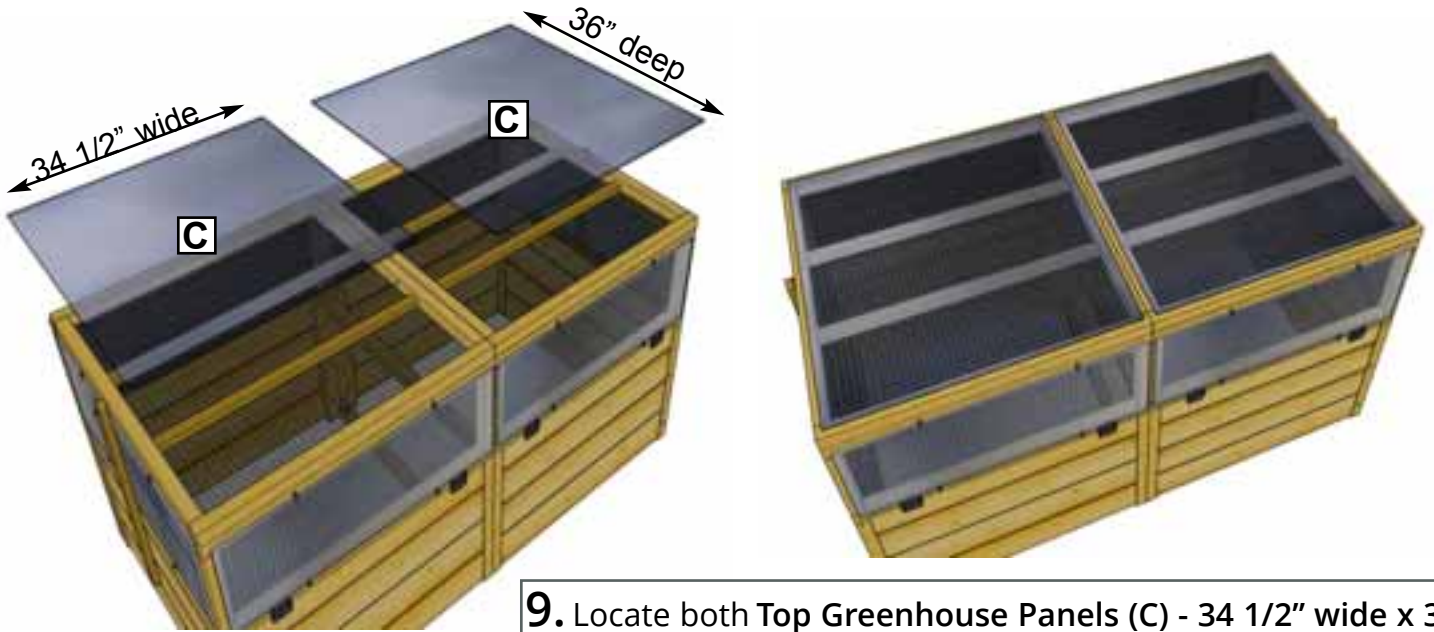
6. Complete attachment of remaining front and rear greenhouse clips and panels as per **Steps 1 - 5**.



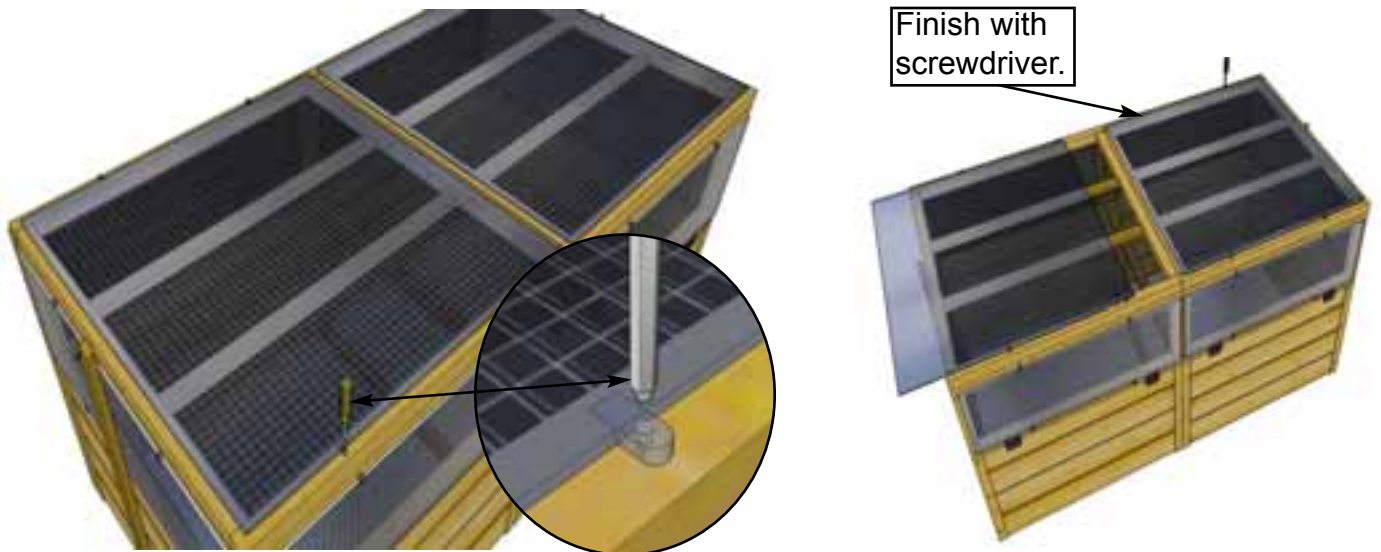
7. To complete side greenhouse panels, install clips as per **Steps 1 & 2**. Slide greenhouse panel from the side instead of from the top as the trellis/lid arm will interfere. Complete as per **Steps 3 - 5**.



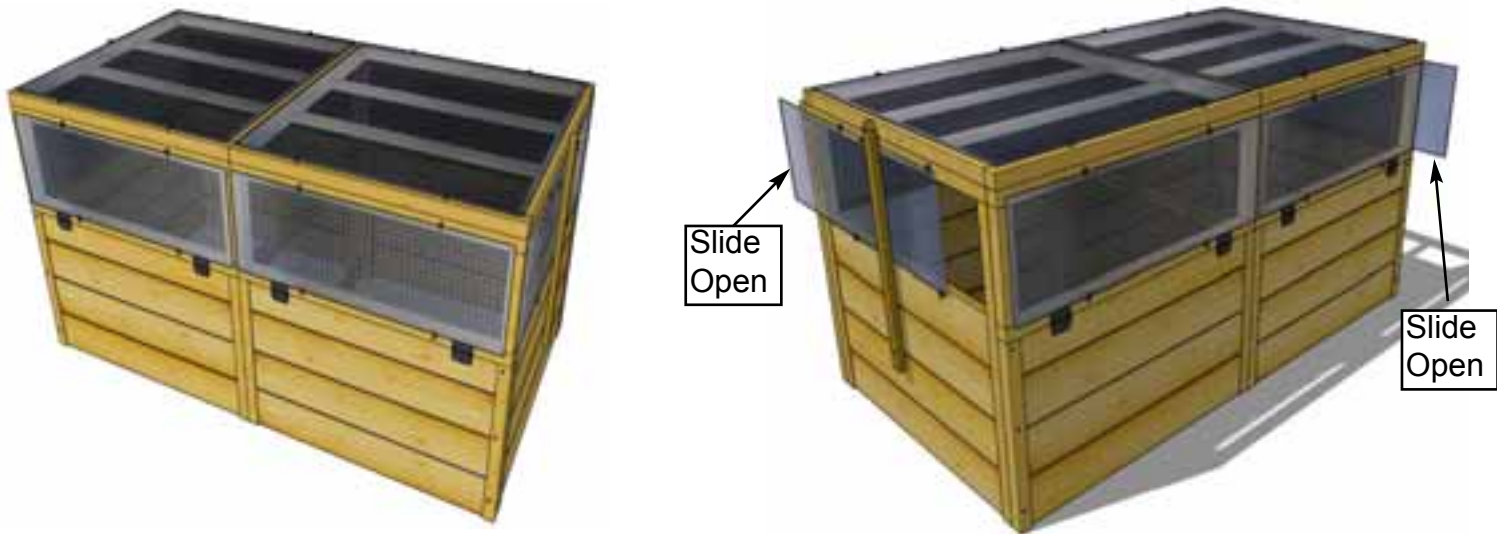
8. Install remaining side greenhouse panel as per **Step 7**.



9. Locate both Top Greenhouse Panels (C) - 34 1/2" wide x 36" deep. Position on trellis/lid framing, evenly spacing on frame.



10. Secure as per Steps 1 - 2 and Step 4. Complete both top panels.



11. Your 6x3 Raised Garden Bed with Greenhouse Kit is now complete. Control the temperature by simply opening or closing any of the panels. Plants like a cross breeze so open two sides as shown above.

With the addition of the Greenhouse Kit, your 6x3 Raised Garden Bed now becomes a multi-functional unit able to produce crops all year long depending on your location.



A. Fall/winter and early spring with panels on. Use as a small greenhouse.



B. Take panels off when temperatures warm up. Keep lid down to protect your young crop from pesky animals.



C. In summer, open lid up as it becomes a trellis for climbing plants.

We hope your experience constructing our **6'x3' Raised Garden Bed Greenhouse Kit** has been both positive and rewarding. We value your feedback and would like to hear back from you on how well we are doing in the following areas:

1. Customer Service
2. On Time Shipping
3. Motor Freight Delivery
4. Quality of Materials
5. Assembly Manual
6. Overall Satisfaction.



The materials contained in this Assembly Manual may be downloaded or copied provided that ALL copies retain the copyright and any other proprietary notices contained on the materials. No material may be modified, edited or taken out of context such that its use creates a false or misleading statement or impression as to the positions, statements or actions.

Please call, write or email us at:

Canadian Address
9393 287th Street
Maple Ridge, British Columbia
Canada V2W 1L1

United States Address
P.O. Box 96
Sumas, Washington
USA 98295

Toll Line: 1.888.658.1658

Fax: 1.604.462.5333

sales@outdoorlivingtoday.com