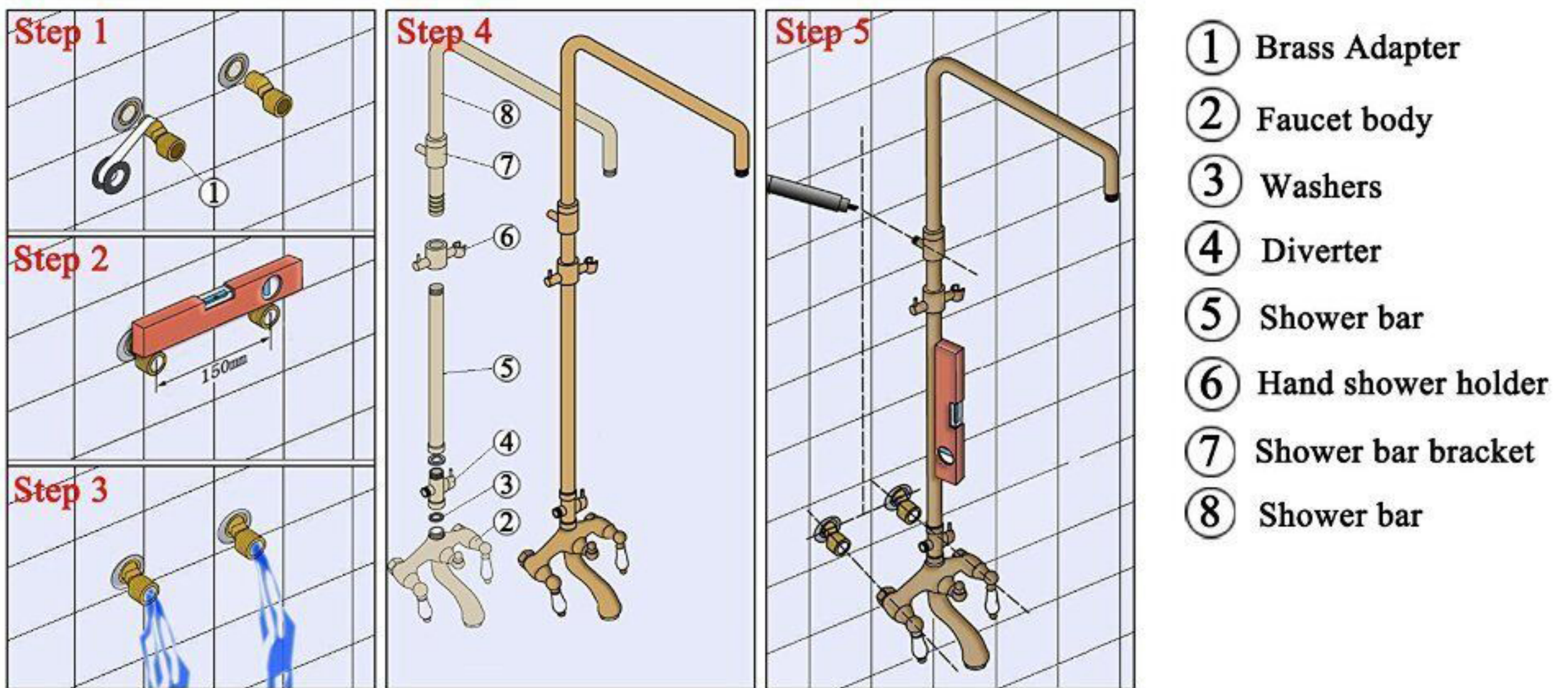


Installation instructions



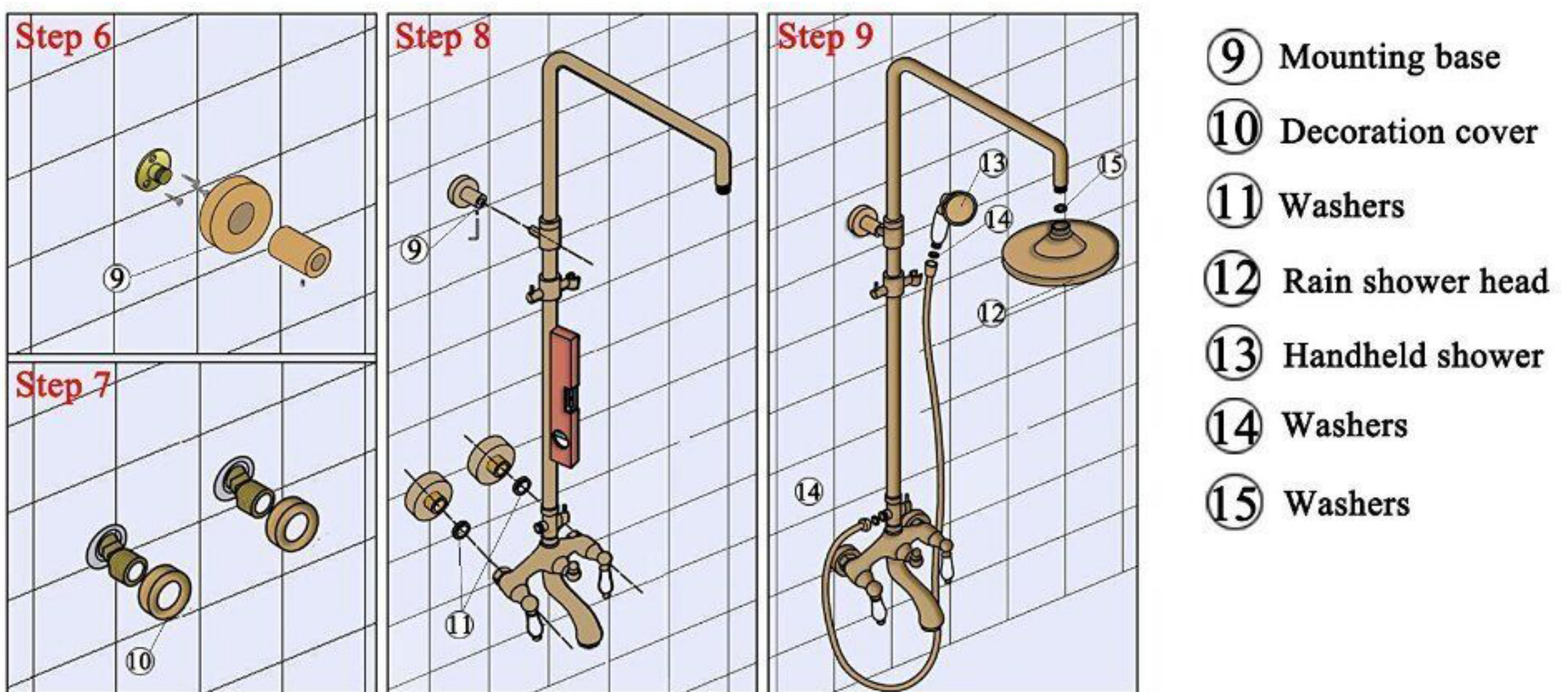
Step 1: Connect the brass adapter provided to water supply line.

Step 2: Adjust lever and distance to fit faucet body.

Step 3: Turn water valve on for a while to let the dust and impurities out.

Step 4: Assemble the shower set.

Step 5: Place pre-assembled shower in the wall to find proper position and then mark the mounting hole need to be drilled.



Step 6: Drill a hole for the upper part shower bar bracket, screw it.

Step 7: Place the decoration cover to the brass adapters.

Step 8: Install the pre-assembled shower to the connections.

Step 9: Connect shower hose, handheld shower and rain shower head.