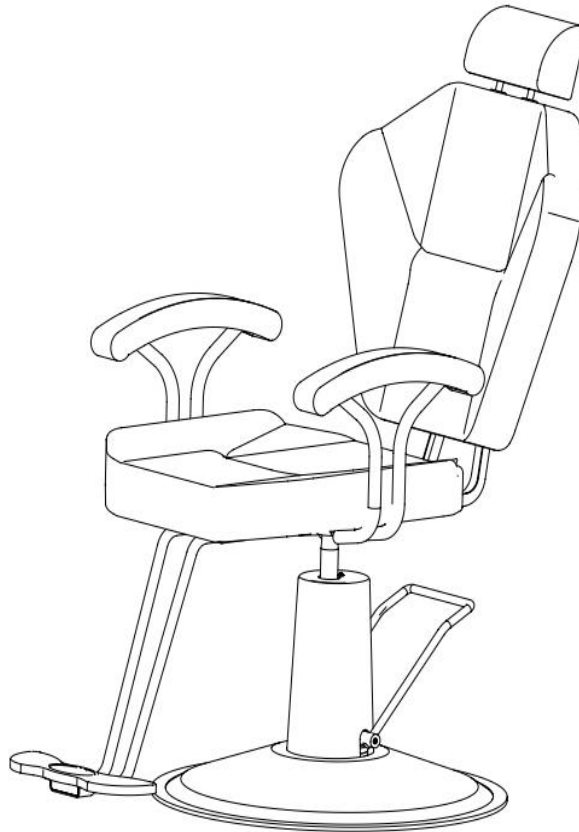


PRODUCT MANUAL



ATTENTION! PLEASE READ THESE INSTRUCTIONS BEFORE USING THIS DEVICE

PRODUCT MANUAL



NOTICE:

If your package is missing parts or you are having issues with assembly, please call us directly , Our customer service team will address any questions or concerns you may have. Have this manual open and ready for reference.

SAFETY



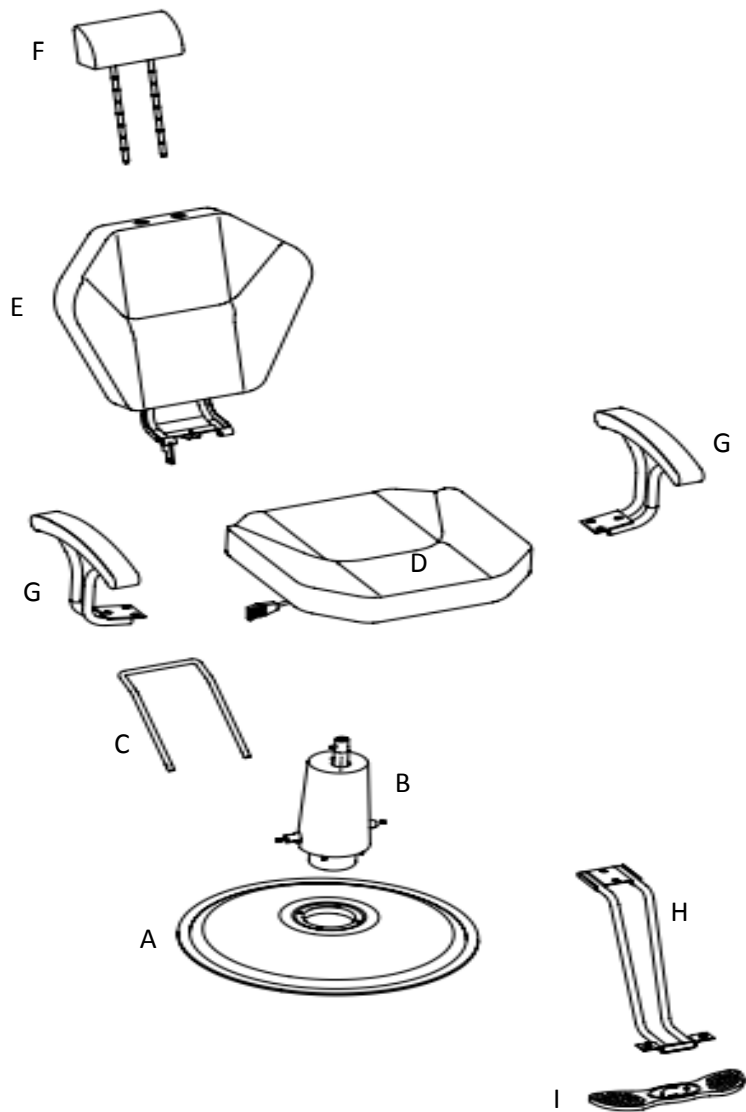
To reduce risk of injury when assembling & using the chair, follow these precautions:

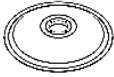
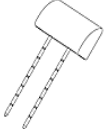
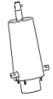





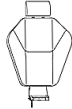

- Read all of these instructions before assembling and using your salon chair.
- It is helpful to have 2 people assemble and turn the chair upright after assembling.
- **Do not over-extend the chair(0~150kg), creating the risk of falls or tipping the chair, and its occupant over, resulting in injury**

OTHER ITEMS YOU WILL NEED (not included)

- Hand Tools:Wrench,Rubber Mallet,Screwdriver (Phillips),Sturdy box

PARTS & FEATURES



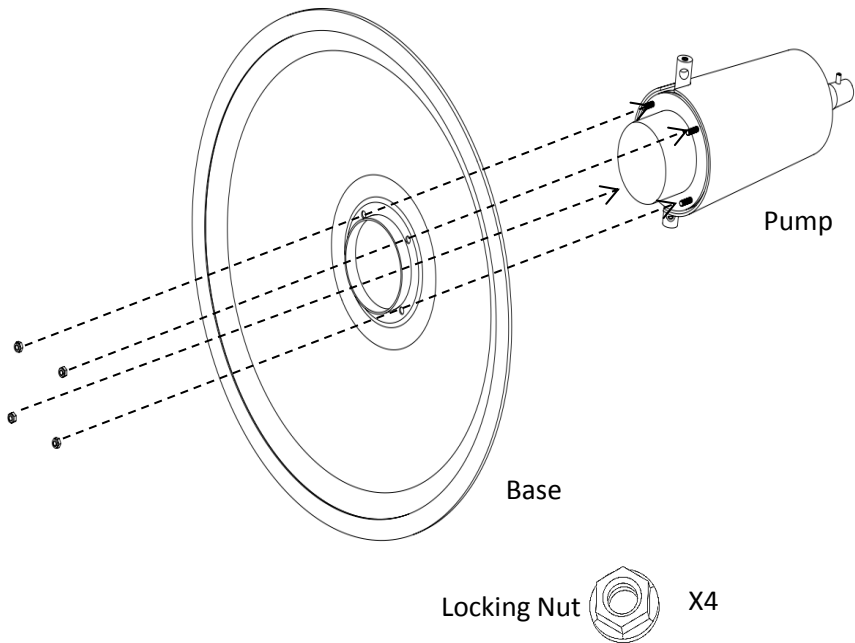
Part Code	Picture	Part Name	Number	Part Code	Picture	Part Name	Number
A		Base	1	F		Headrest	1
B		Pump	1	G		Handrest	2
C		Foot bar	1	H		Leg.support	1
D		Seat	1	I		Footrest	1
E		Backrest	1	J		Locking Nuts	4

Installation instruction

First : Installation Hydraulic Pump to Base

• Parts Needed: Base + Pump +
4 Locking Nuts + Wrench

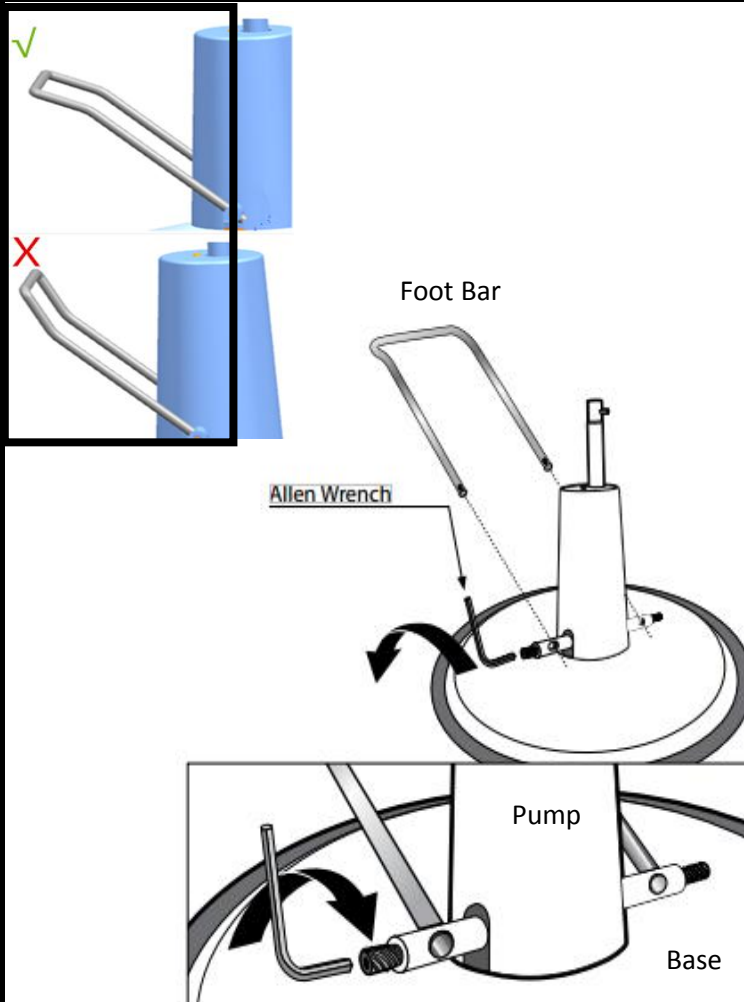
Step 1. Insert threaded bolts on
bottom of
Pump into holes on top of Base.
Tighten
4 locking nuts onto threaded
bolts.
(Easiest when set on side,
supported by
a sturdy object.)



Second : Assemble Foot Bar to Assembled Hydraulic Pump & Base

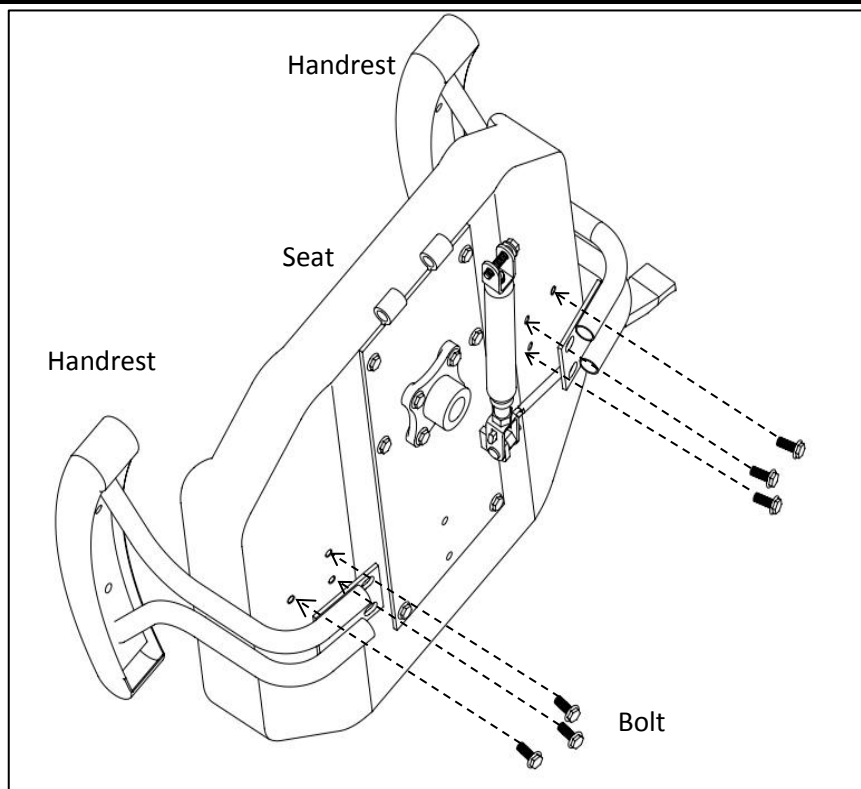
• Parts Needed: Foot Bar +
Assembled Base & Pump +
Allen Wrench

Step 1. Place assembled
Base & Pump on floor.
Use Allen Wrench to loosen
the screws
in the crossbar. See photo
besides.
Insert Foot Bar into the holes
of the crossbar.
(May require slightly
squeezing ends of Foot Bar
towards each other, and
some maneuvering for the
bar ends to go into place.)
Step 2. Tighten the set
screws to firmly
hold the Foot Bar in place.



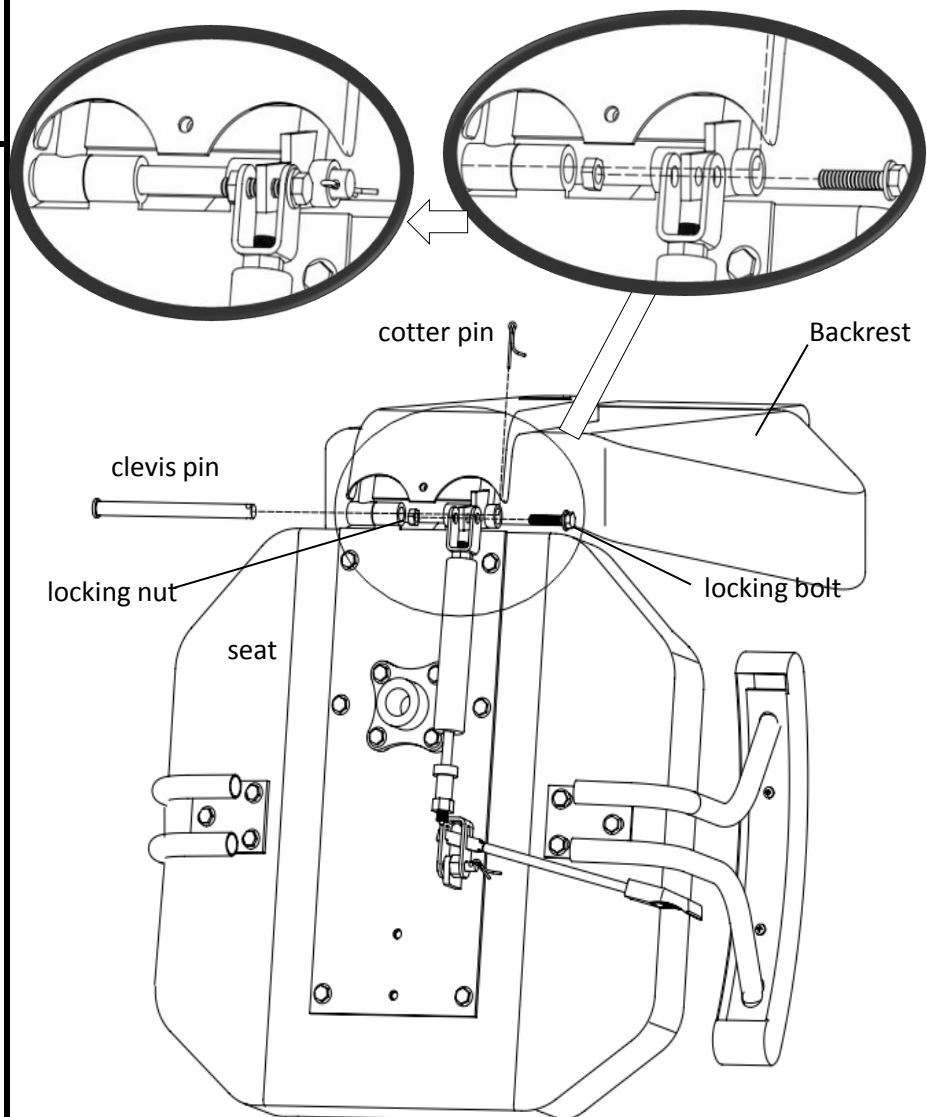
Third : install the handrests on the seat

- Parts Needed: 6 bolts + Seat + 2 Handrest
- Step 1 .Remove the 6 bolts which Pre-fixed in the seat
 Step 2 .Install handrest with seat by 6 given bolts and tighten them.



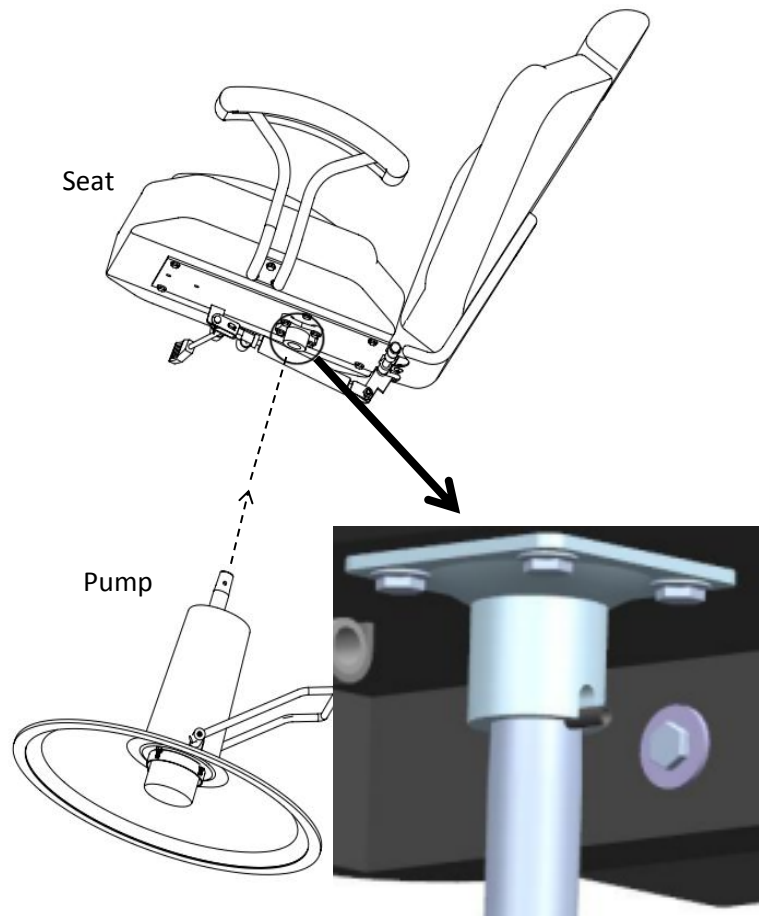
Foruth: install the backrest on the seat

- Parts Needed: Backrest + Assembled handrest&seat
- Step 1 .Remove the cotter pin and clevis pin which pre-fixed in the seat.
 Step 2 . Attach the backrest to the seat by cotter pin.Tighten with the clevis pin(please note if you can not hammer the cotter pin in,please shake the backrest back and forth)
 Step 3:Swing out the locking bolt and locking nut from the U-shaped part of recling cylinder then connect U-shaped part of cylinder with the metal of backrect.



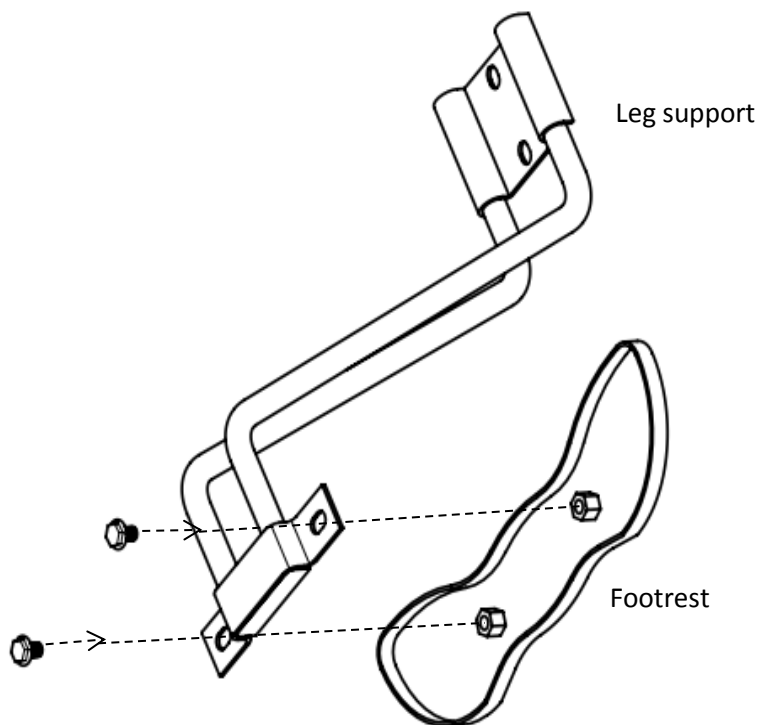
Fifth:Install the chair on the base

Place seat onto the hydraulic pump (please note the pin on the pump toward the gap of the pump joint)



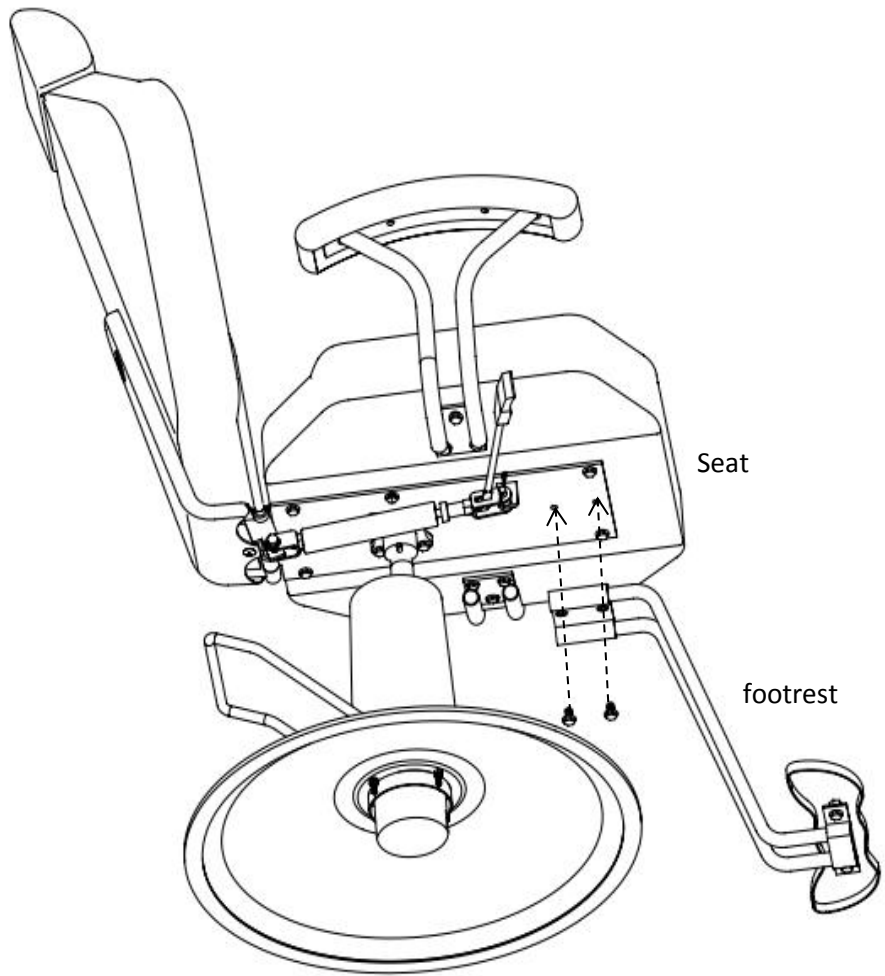
Sixth:Install the footrest

Parts Needed: Leg support + Footrest
Step 1: Release bolts which pre-fixed in the footrest
Step 2: Attach the leg support to the footrest by screwing them tightly.



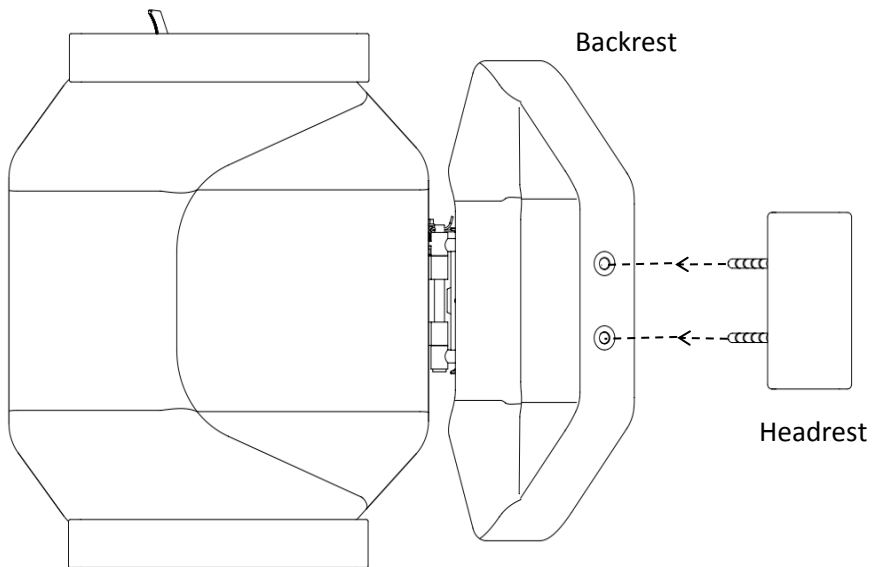
Seventh: install the footrest on the seat

Step 1: Remove the 2 bolts which pre-fixed in the seat.
Step 2 : Locate the assembled footrest to the bottom of the seat rest by locking 2 bolts tightly.



Ninth: Install headrest to the chair

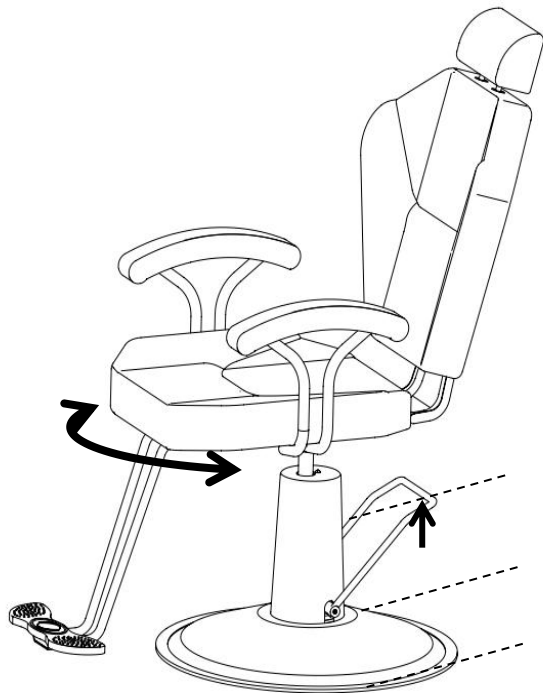
Parts Needed: Headrest
Insert the head rest to the back rest.



OPERATING THE CHAIR

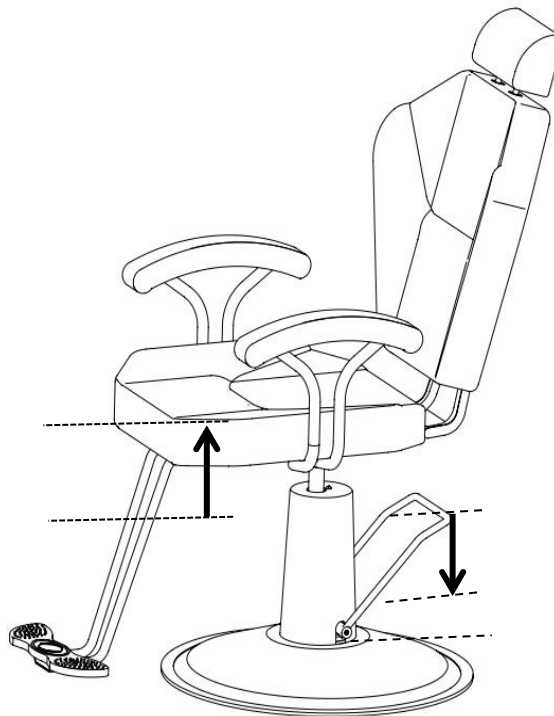
First :

1. In the natural state, the upper part of the pump can rotate freely on the rotation axis of the pump;
2. Hold up the foot bar to lock the moving of chair .



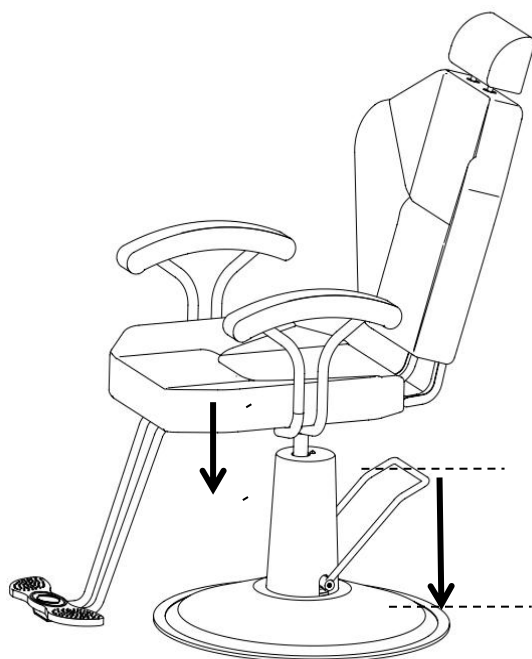
Second :

- Step down on the Foot Bar repeatedly to raise the chair to the desired height.



Third :

- Step down and hold the Foot Bar to allow chair to lower.



Fourth :

- Push Lever on side of chair back to adjust the tilt of the backrest.

