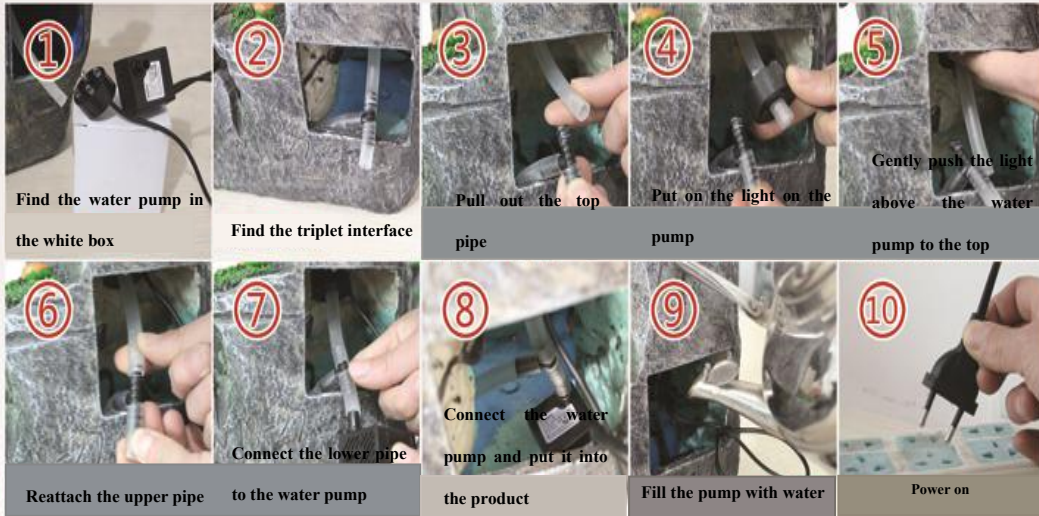


## Installation



### Tips

1. The water pump should be placed in the water, and the water level should be higher than the water pump
2. When installing the water pump, make sure that the valve of the water pump is opened to the maximum
3. Do not bent the water pump

### Use of Atomizer

1. When the atomizer is running, the atomizer head cannot leave the water surface
2. Do not touch the atomizer chip by hand when the atomizer is running
3. Please use clean tap water instead of turbid water
4. Do not use more than 10 hours a day
5. The atomizer is a kind of wear and tear part, and its service life is about 3000 hours
6. If it is found that the amount of mist is reduced, please use a cotton swab or a soft surface to clean the atomization sheet

### Use of Water Pump

1. The pump cannot be operated without water
2. If the water output is reduced, check whether the water pump valve is adjusted up
3. When the water pump is above the water surface, please add water in time until the water level overflows the water pump
4. After a long time of use, please clean the scale inside the water pump
5. It is suggested that the water pump should not be opened for 24 hours to prolong the service life of the water pump

**Warm tips:** if the ball does not rotate, the product is not straightened. It is recommended to pad the ball at any corner at the bottom of the product with a gasket. Try each of the four angles until the ball rotates. If the stone mill does not rotate, it is recommended to block the leather tube connecting the ball with sponge until the stone mill can rotate.

### Atomizer Installation

Note: Atomizer is not a standard product configuration



### Flow Regulation Diagram

