

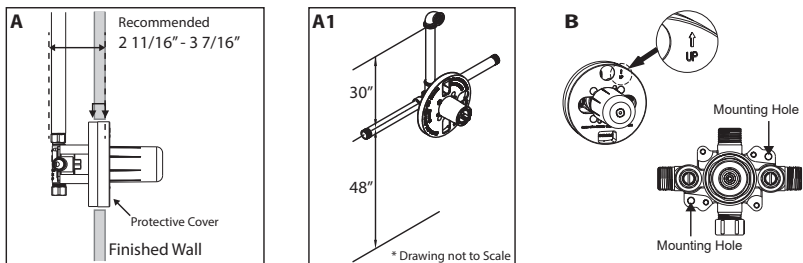


INSTALLATION MANUAL
FOR SHOWER SYSTEM

Installation

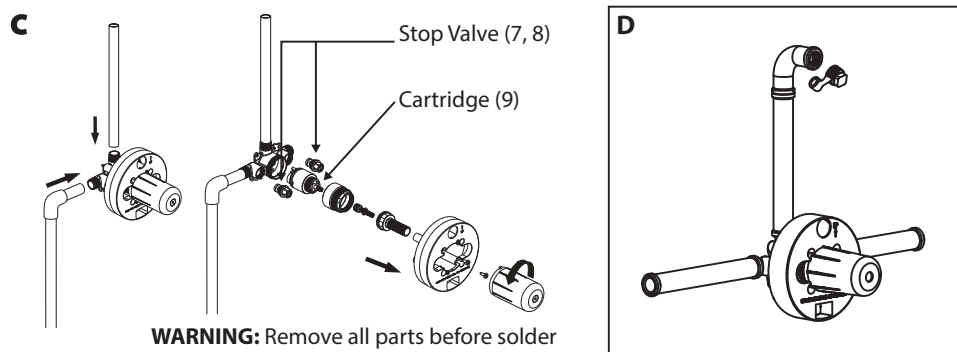
1. Position valve body in wall. It is recommended the valve to be about 48" above the floor and shower outlet to be about 30" above the valve (Fig. A1) The finished wall should be set between the markers on the temporary protective cover. The recommended depth is 2 11/16" to 3 7/16". (Fig. A) Make sure the **UP** outlet is pointed upward. (Fig. B)

NOTE: Valve access hole on the wall should be 6" in diameter and outlet hole for shower arm is about 1 1/4" in diameter.



2. Connect the valve to the plumbing with proper fittings. Perform a dry fit before soldering pipes to the valve. (Fig. C)

WARNING: Exposure to high temperature will damage the cartridge (9) and stop valves (7, 8). Remove these parts before soldering.



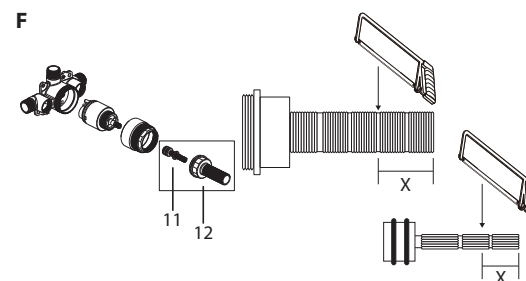
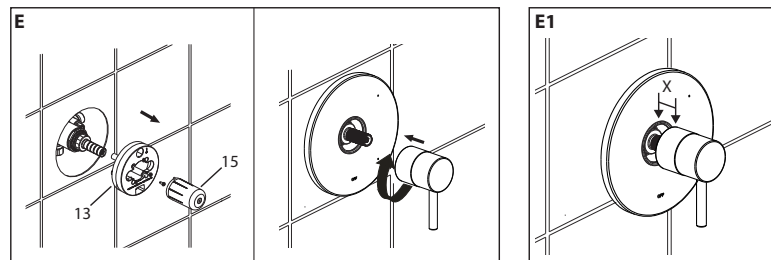
3. After the pipes are soldered, install the stop valves (7, 8), cartridge (9), stem (11), and threaded nipple (12) back onto the valve body.

4. Pressure test and flush the valve. **NOTE:** Pressure must be approximately equal on both hot and cold side for the valve to function properly. (Fig. D)

- Install a 1/2" iron pipe plug (not included) on the shower outlet.
- Turn the valve to ON position and check all connections for leaks for about a minute.
- Turn the valve to OFF position after pressure test. Make sure the pipes are free of debris or sediments and remove the 1/2" plug.

Installation (Cont.)

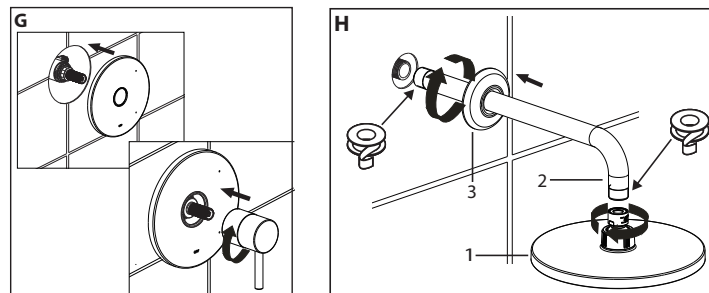
5. Remove and discard the protective sleeve (15) and cover (13) from the valve. Slide the escutcheon onto the valve. Attach the handle (18) as shown in Fig. E. Place the handle assembly on the stem extension (12) and turn the handle clockwise to install the handle. If there is a gap when the handle is attached to the valve measure and write down the distance of the gap between the handle and the escutcheon plate as shown in Fig. E1.



6. Remove the handle and the escutcheon plate and set them aside. Remove the threaded nipple (12) and the stem (11) from the valve body. Use a hacksaw to trim the threaded nipple (12) and valve stem (11) based on the measurement taken in step 5 figure E1 as shown in figure F. **NOTE:** Trim the pieces separately, do not trim both parts at the same time. It is best to cut off only small amount of the brass stem and test fit the handle.) **NOTE:** Do not trim the stem (11) and threaded nipple (12) directly on the cartridge because it will damage the cartridge)

7. Re-install the threaded nipple (12) and stem (11) assembly to the valve body. Carefully slide the escutcheon plate onto the valve and attach the handle assembly shown in figure G.

8. Slide the flange (3) onto the shower arm (2) and apply PTFE tape to both ends of the shower arm. Attach the shower arm to the plumbing and slide the flange on the wall. Attach the shower head (1) as shown in Fig. H. **NOTE:** Do not over tighten the connections.) The installation is now complete.



Limited Lifetime Warranty

The manufacturer warrants this product to be leak and drip free during daily normal household use for as long as it is owned by the original purchaser of this product. Please keep a copy of the original invoice as proof of purchase.

Should a malfunction occur within the warranty period, Lordear will, as its option, (1) repair or replace the defective part(s) or product at no charge; (2) issue a refund of the purchase price paid for the product (Valid within 30 days from the date of purchase); or (3) issue a credit to be applied against the purchase of a new Lordear product. Shipping/ delivery charges may apply and are in Lordear sole discretion.

This limited warranty shall not apply to goods which have been subject to accident, negligence, improper installation, product abuse, product misuse, or use of cleaners containing abrasives, alcohol or other organic solvents, whether performed by a contractor, service company, or yourself, are excluded from this warranty.

Our responsibility under this warranty is limited to only to replacement parts and no other costs. Lordear will not be responsible for labor charges and/or damage incurred by installation, repair or replacement, nor for any indirect incidental or consequential damages, losses, injury or costs of any nature relating to this faucet. Except as provided by law, this warranty is in lieu of and excludes all other warranties, conditions, and guarantees, whether expressed or implied, statutory or otherwise, including without restriction those merchantability of fitness for use.

This limited warranty is non-transferable. This limited warranty only applies to products purchased and installed in the United States. This limited warranty covers the original consumer purchase only and does not include business, commercial or industrial use of this product. To obtain service under the Limited Warranty, please contact Lordear at lordearproducts@gmail.com. The Lordear Customer Care Department will determine whether to repair or replace your product, issue a refund, or issue a credit.

Maintenance Guide

Please follow the cleaning material manufacturer's instructions. Damage caused by improper treatment will not be covered by product warranty. In addition, pay attention to the following points:

- Regular cleaning can prevent mineral build up on faucet spout.

- Carefully read the cleaner product label to ensure the cleaner is safe for use on the material.
- Test the cleaner on a small area before using on the entire surface.
- Use a mild detergent such as liquid dishwashing soap and warm water for cleaning.
- Do not use abrasive / harsh chemical when cleaning the fixture as they will damage and dull the

Guarantee Repairs Claims

1. Within warranty period, LORDEAR is responsible for repairing any defective product for free.
2. Please contact seller by email with this warranty and purchase invoice when the product needs guarantee repairs within warranty period.
3. Within warranty period, the listed situations below need to pay for replacement.
 - 3.1 The malfunction and damage caused by improper use and repair or reconstruct unauthorized. (forbid any throw, beat behavior)
 - 3.2 The malfunction and damage caused by not refer to instruction during installation. (forbid any unprofessional plumber install this product)
 - 3.3 The malfunction and damage caused by removing after installation or other factors.
 - 3.4 The malfunction and damage caused by application beyond the scope of usage.
 - 3.5 The damage caused by sands or dirty hands.
 - 3.6 The damage caused by daily improper maintenance and rust on finished and so on.
 - 3.7 The malfunction and damage caused by fires, earthquakes, floods, lightning and natural disasters, pollution, harmful gas, salt and abnormal voltage and other reasons.
 - 3.8 The occasions which purchase invoices are not presented.
4. The recommend water temperature of hand shower and rain shower head is $\leq 42^{\circ}\text{C}$ with water pressure 0.1-0.3 Mpa. The highest temperature not suggest beyond 70°C with water pressure 0.05-0.5 Mpa. So any product equipped with shower, please keep it away from the heater to avoid potential risk.
5. This limited warranty applies only to the original purchaser and hotel business. It expressly excludes labor charges, removal charges, installation, or other incidental or consequential costs. Any inappropriate application will void the warranty.
6. This warranty can no be replaced if missed, please keep safe.
7. After-sales service e-mail: lordear.guo@gmail.com or call at 303-397-6818.