

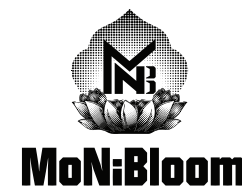
Notes for use

1. Please check whether each part is installed in place and connected tightly before use.
2. The caregiver must not leave when using.
Car regulation must be done by human.
4. Do not use the car on rough ground or near the stove.
The maximum bearing weight of this car is 15kg, not overweight.

Insurance have often

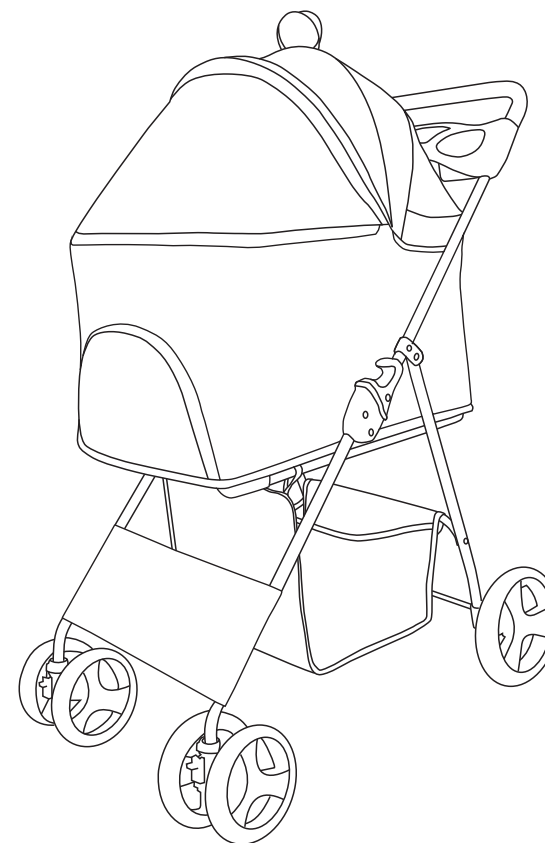
To protect your pet from injury, please check and maintain your car regularly.

1. The cloth cover of the pet car basket can be disassembled.
When cleaning the cloth cover, please remove the bottom plate of the car basket (the bottom plate is fiberboard) first, and then use cleaning tools such as brush to clean stains.
2. Check regularly for loose screws, damaged parts or broken stitches. If necessary, replace the damaged parts. When disassembling and assembling, please install the operation manual carefully to avoid unnecessary damage.



Pet stroller

Installation instruction



Pay attention to:

Confirm relevant accessories before installation and use, and install according to the instruction manual.

Accessories:



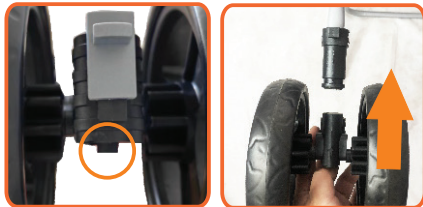
1. Basket part
2. The frame
3. Plates and wheels



Unfold the frame and install the wheels



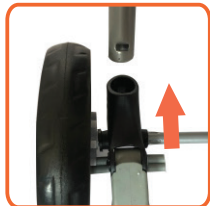
1. Open the frame hook and push the handle up until the frame is fully open with a click.



2. Press and hold the pick under the front wheel, and insert the front wheel into the front foot tube as shown in the figure.



3. Assemble the rear wheel: in the order shown in the picture, install the gasket → wheel → gasket → buckle in turn, and finally cover with decorative lid.

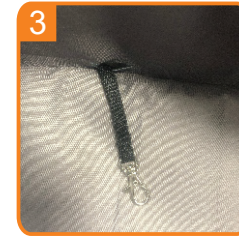


4. Turn the brake pedal backward as shown in the figure, and then insert the rear wheel into the two rear foot tubes at the same time until they are stuck. (Press the brake pedal to brake)

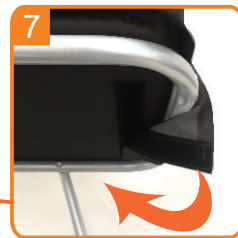
5. Buckle on a plate



Install the car basket



1. Take out the basket and stretch the inside bracket to both sides to 90° until the top is on the 4 clasps. (Figure 1, Figure 2)
 2. Put the dog leash through the hole in the cotton pad and zip it up. (Figure 3, Figure 4)
 3. Unfold the hood, secure the back of the hood with Velcro, and zip up the front. (Figure 5)
 4. Place the basket on top of the frame. (Figure 6, Figure 7)
- Note: The front of the bottom of the basket is set on the frame tube, and the back is fixed with Velcro.



Folding



1. Get the basket.
2. Press the pickup button and turn the push bar forward, then press the push bar down.
3. Fold the cart.