

POOL SHOT Junior Varsity

Assembly Instructions

(Model #PSM-100NP)

(REVISION DATE: (040219))

POOL SHOT
by Meese



Water Basketball Varsity Assembly Instructions

(Model #PSL-100NP)

Assembly Tools Needed:

7/16" ratchet (socket) or wrench
9/16" ratchet (socket) or wrench
1/2" ratchet (socket) or wrench
Pliers
Scissors
Garden hose (if filling with water)
Play sand and funnel (if filling with sand)



Complete Parts List:

- 1 - psm-100 base
- 1 - psm-100 backboard
- 4 - 13" orange strip decals
- 1 - blue "pool" decal
- 1 - orange "shot" decal
- 1 - aluminum support plate
- 4 - 1/4" x 3/4" bolts
- 4 - 1/4" 1-1/4" fender washers
- 1 - 15" rim
- 4 - 5/16" x 2-3/4" bolts
- 4 - 5/16" lock nuts
- 4 - 3/8" flat washers w/rubber on one side
- 4 - 5/16" flat washers
- 1 - basketball net
- 1 - brass/rubber base plug
- 1 - orange plug
- 2 - basketballs

**NOT INTENDED FOR CHILDREN 12 AND UNDER
SUPERVISION RECOMMENDED DURING PLAY**

Note: We recommend assembly of this unit is performed at the location of your swimming pool where the unit will be used. The side of an in ground swimming pool at the three to five foot depth level is the most common area for use. Carefully lift any parts of the unit, as this may cause injury.

Step 1: Decal Placement (see picture on cover for placement)

Hardware Needed:

4 - 13" Orange strip decal

Blue "Pool" decal

Orange "shot" decal

Locate the four orange strip decals, lay backboard on the ground front facing up. Located in the center of the backboard is the molded in square, this square has a different texture than the rest of the backboard. Peel off the backing of one of the strips and place on one side of the recessed square. Repeat for the remaining three sides of the square.

Locate the blue "pool" decal, lay base on its back with the front of the base facing up. Place the "pool" decal in the center top to bottom of the left side of the middle portion of the front of the base.

Locate the orange "shot" decal place the "shot" decal in the center of the right side of the middle portion on the front of the base.

Note: if you are having trouble getting the decals to stick to the plastic, clean the surface by using alcohol to clean the area. When the area is dry, try applying the decals again.

Step 2: Insert base plug

Hardware needed:

1 -base plug

Take the brass/rubber base plug and fully insert it into the recessed drain hole located at the back end of the base near its bottom. Begin turning the brass "t" in a clockwise direction while pushing the plug into the drain hole. The plug should begin to expand within the drain hole. Tighten enough to assure a water tight fit but do not overtighten plug. You may need to use pliers to tighten enough for a good water tight seal.

Note: If the plug size appears to be too small before tightening, hold the rubber part in one hand and turn the brass "t" in a clockwise direction with your other hand. The plug should begin expanding in your hand. Allow the plug to expand a little and then re-insert it into the base drain hole and follow the procedure again.

Step 3: Connecting base and backboard

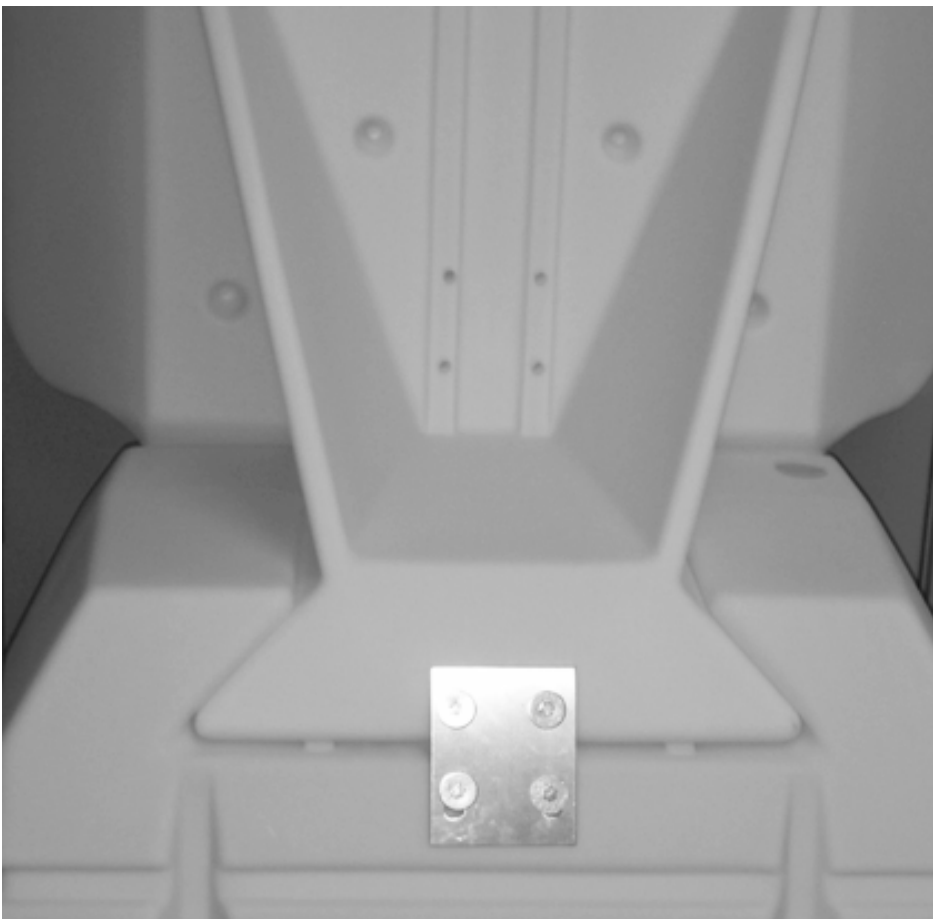
Carefully pick up the backboard with the orange square target facing you and slide its bottom section into the top section of the base from the front of the base until the backboard comes to a stop. Be sure the "pool shot" decal is facing you when you slide the backboard into the base

Step 4: Securing the base to the backboard

Hardware Needed:

- 1 -aluminum support plate
- 4 -1/4" x 3/4" bolts
- 4 -1/4" x 1-1/4" fender washers

Take the support plate and align its four holes with each threaded hole found at the rear of the base and backboard. There are two threaded holes in the base and two threaded holes in the backboard. Slip a 1/4" x 1-1/4" fender washer over a 1/4" x 3/4" bolt and hand tighten into one of the aligned threaded holes. Repeat this for the remaining aligned threaded holes. Now tighten all four bolts with a 7/16" ratcheted wrench. **Be sure not to over-tighten**, damage will occur to the thread holes.



Step 5: Attaching the 15" rim

Hardware needed:

1	- 15" rim	4	- 3/8" flat washers w/rubber on one side
4	- 5/16" x 2-3/4" bolts	4	- 5/16" flat washers
4	- 5/16" lock nuts	1	- basketball net

Slip a 3/8" flat washer over one of the 5/16" x 2-1/2" hex head cap screws (the rubber is to be facing away from the hex head cap). Insert this bolt through one of the holes on the 15" rim from the front of the rim and then through the corresponding hole in the backboard. Place a 5/16" flat washer over the portion of the bolt now sticking out through the back of the backboard and hand tighten with a 5/16" nylon lock nut. Repeat for the remaining bolts in connecting the rim to the backboard. Now secure all four bolts with your 9/16" wrench in the front and the 1/2" ratchet in the back. **Do not over-tighten** the four bolts only tighten to a snug fit or backboard will warp.

Now attach the net to the hoop by looping it through the net retainers on the hoop.

Note: if any of the holes in the backboard appear to be too small for the bolts, press a screw driver through the hole and rotate several times to enlarge hole.

Step 6: Filling the base with sand or water to the fill line

Hardware needed:

1	-orange plug
---	--------------

Place the fully assembled unit approximately 3 to 6 inches from the edge of the swimming pool. Be sure the hoop is facing the pool and the base is parallel to the pool edge. Make sure base is not overhanging the pool edge and is completely flat on the pool deck.

If using water as weight: before completely filling with water, we recommend that you pour approximately one (1) quart of liquid bleach or chlorine into the base to help prevent algae growth. (not applicable when using sand) take the garden hose and place its end into the fill hole located at the top of base. Turn on the water and completely fill the base to the top of the fill hole.

If using sand as weight: with a funnel, fill the base with additional sand through the fill hole located at the top of base. Fill the base to about 1/2 to 2/3 of its full capacity with sand.

Now locate the orange plug and insert it into the base fill hole by pressing it down firmly until it is fully seated in place.

Congratulations!....Your Assembly is Complete.

Before any use, please read all the following safety information for this product.

Cautions and Warnings

Make certain that the rim extends well over the edge of the pool

Water base must be completely on decking with no overhang

Caution: Do not hang on rim or net. Injury to player may occur and damage to paint on rim will cause rusting.

Do not pull unit towards the pool

Do not drag unit along the ground or decking

Only use a light-weight ball with unit

Pool shot is for swimming pool use only

*Adult supervision is required

IMPORTANT!

Every attempt has been made to provide a trouble free product.

If in the event you have missing or defective hardware, please call our toll-free customer satisfaction hot line listed below.

MEESE, INC.

1745 Cragmont Street

Madison, Indiana

47250-2874

800-829-4535

Fax: 812-273-1878

meese-inc.com

e-mail: customerservice@meese-inc.com

Care and Maintenance

Inspect this equipment periodically during regular use to insure that unit is in a safe operating condition.

Check for any loose hardware.

Check base for any signs of leakage.

Do not use this equipment if any hardware is loose or missing or structural fatigue or possible equipment failure is evident. Order replacement parts immediately before allowing anyone to use this equipment to avoid possible injuries or property damage.

Play must be halted if unit shows any signs of fatigue or failure.

Chlorine and sunlight are the natural enemies of most materials. To prolong the life of your unit, when the component are not in use for long periods of time, remove them from the swimming pool environment, wash down with plain water using your garden hose and store them out of direct sunlight and moisture.

Never drag components on any type of surface as damage will occur to the parts.

Be absolutely sure to completely drain water from base before storing especially if unit is subjected to freezing temperatures.

Never hang on rim or net. serious injury could result.

Make sure base is always completely situated on swimming pool decking and not overhanging the swimming pool.

Extra parts can be purchased at www.backyardpoolproducts.com.

BE ABSOLUTELY SURE TO COMPLETELY DRAIN WATER FROM BASES BEFORE STORING ESPECIALLY IF UNIT IS SUBJECTED TO FREEZING TEMPERATURES.

* SAVE THESE INSTRUCTIONS FOR FUTURE USE

Limited Warranty

Meese, Inc. warrants that the products manufactured and sold by it will conform to agreed specifications, will be fit for the uses or applications for which designed and will be free from defects in materials and workmanship. This warranty will remain in effect for a period of one (1) year from the date of delivery. The mail in registration slip should be sent immediately following delivery of product for this warranty to become effective. Send registration slip to Meese, Inc. 1745 Cragmont Street, Madison, Indiana 47250-2874. Meese, Inc., at its option, will either repair or replace, excluding freight costs, any nonconforming or defective products, provided Meese, Inc., is given written notice of and an opportunity to inspect the nonconforming or defective products within (30) days after the discovery of the nonconformity or defect. This warranty does not apply to products which have been subject to misuse, misapplication, improper repair, assembly or storage, or which have been otherwise damaged by the fault or negligence of anyone other than Meese, Inc. or its agents.

THIS WARRANTY IS EXPRESSLY MADE IN LIEU OF ALL OTHER WARRANTIES, EXPRESS OR IMPLIED, INCLUDING, WITHOUT LIMITATION, WARRANTIES OF MERCHANTABILITY OR FITNESS FOR A PARTICULAR PURPOSE. MEESE, INC. SHALL NOT BE LIABLE FOR ANY CONSEQUENTIAL, INCIDENTAL OR OTHER DAMAGES.

Cut here

.....

Warranty Registration

Please fill out and mail within 10 days to:

Meese, Inc. 1745 Cragmont Street, Madison, Indiana 47250-2874

First Name _____ Last Name _____

Street Address _____

City _____ State _____ Zip _____

Phone Number _____

Date Purchased. _____

Product Model Number/Description. _____

Place of Purchase _____

Purchase Price _____

We are very interested In your comments. Please tell us what other types of products you are interested in for your swimming pool environment. Thank you for your input.
