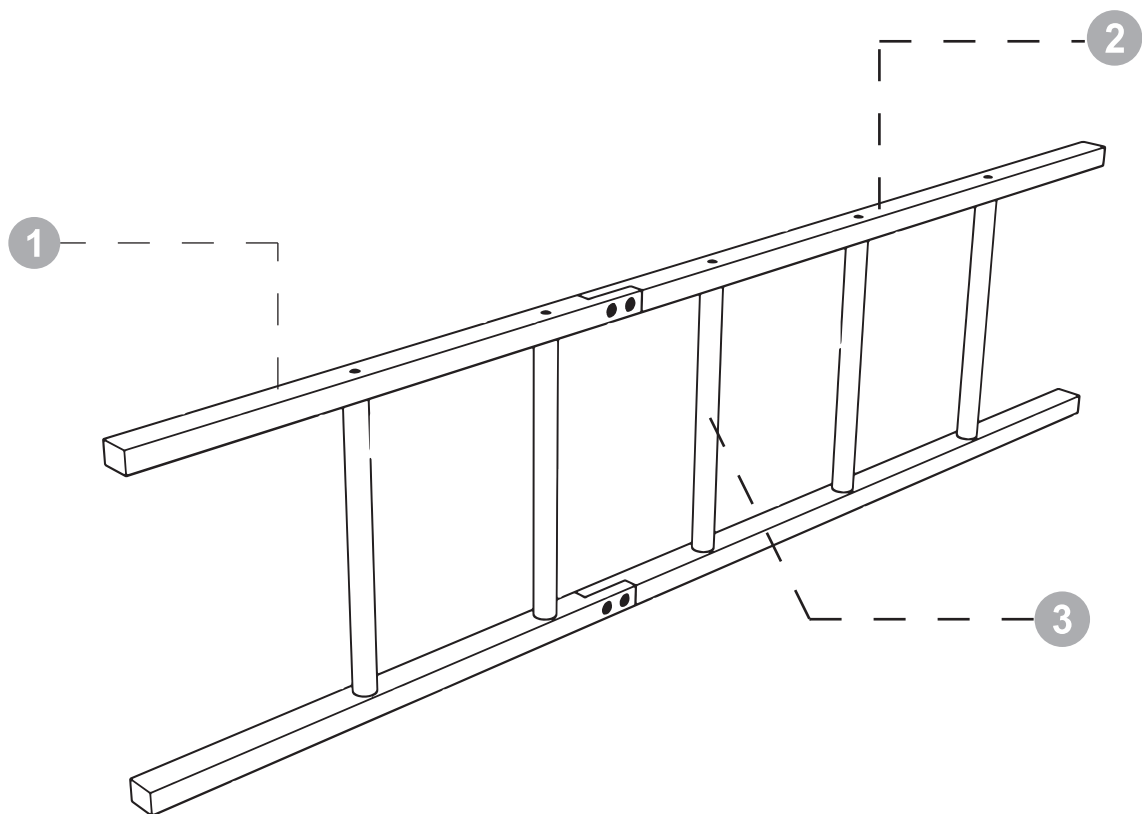
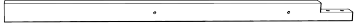







# **BLANKET LADDER**

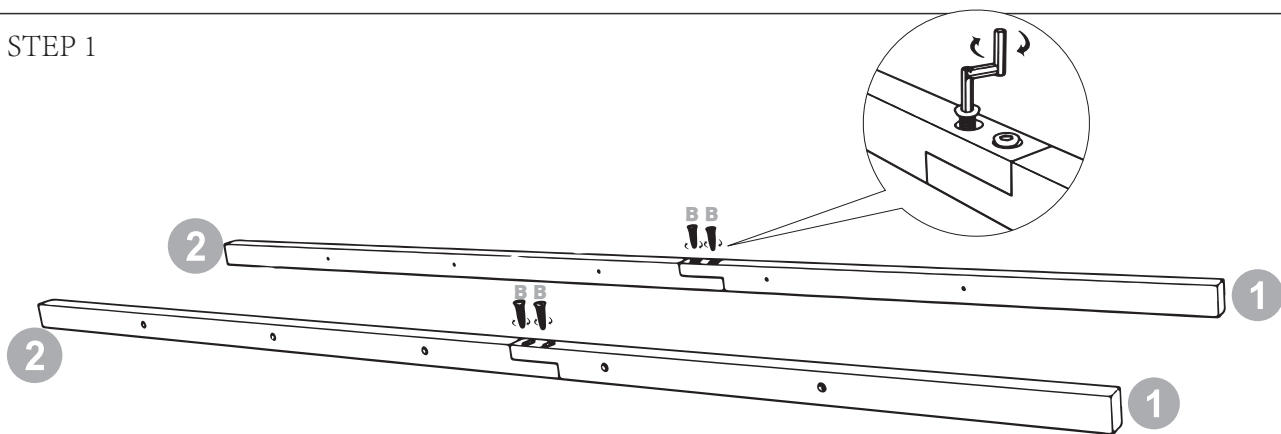
## ASSEMBLY INSTRUCTION



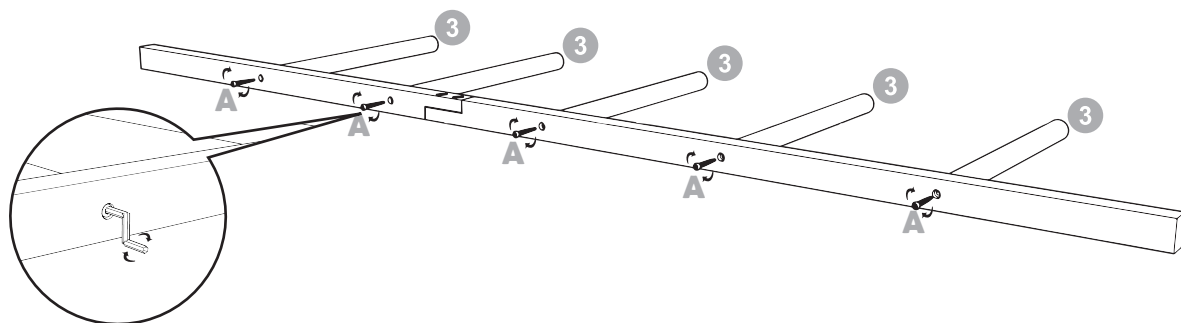
<b>1</b>  2PCS	<b>2</b>  2PCS	<b>3</b>  5PCS
<b>A</b>  10PCS	<b>B</b>  4PCS	<b>C</b>  1PC

WE STRONGLY RECOMMEND THAT THE PRODUCT IS ASSEMBLED ON A FLAT AND SMOOTH SURFACE AND KEEP ON THE SAME HORIZONTAL LINE, OTHERWISE, THERE WILL BE A PHENOMENON OF SCREW DISLOCATION AND CANNOT BE INSTALLED.

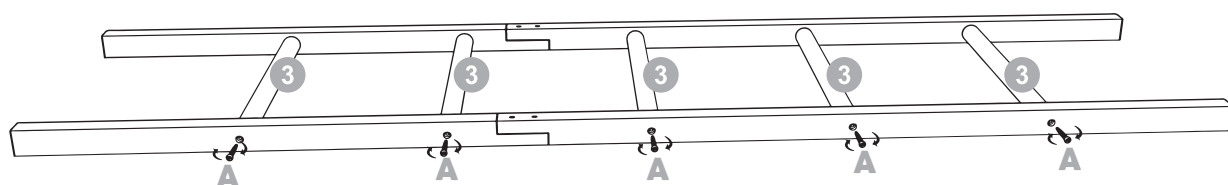
STEP 1



STEP 2



STEP 3



OK

